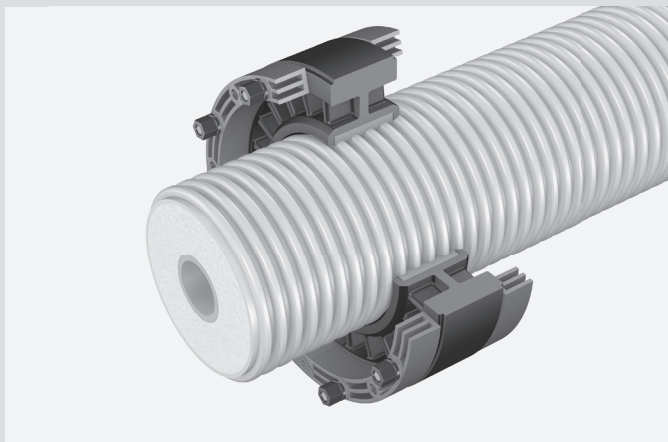


# INSTALLATION INSTRUCTIONS

## Curaflex Nova® Gasket inserts

- Curaflex Nova® Senso



Curaflex Nova® Senso

### Intended use

The gasket insert Curaflex Nova® Senso is suitable for the careful sealing of pipes with a textured surface, for example, for corrugated plastic jacket pipes and flexible cable ducts.

### Please note:

- The nut side of the gasket insert should point to the non-water exposed side.
- Clicking noises when mounting indicate the fixed wedging of the ring halves. They are not a warning sign!
- Gasket inserts do not act as fixing points or support bearings, but rather serve exclusively to elastically seal pipes and cables.
- Slight axial movements of the pipes and cables are allowed. With ducts, there is no relative motion possible towards the Curaflex Nova® Senso gasket insert.
- For den Curaflex Nova® Senso, there are fixing brackets optionally available that can be screwed onto the frame ring (accessories fixing kit). These additionally secure the gasket insert under higher pressures.
- The gasket insert Curaflex Nova® Senso is maintenance free if installed correctly.
- The gasket insert Curaflex Nova® Senso is only suitable for the onetime installation.  
The relevant FHRK standard (minimum seal width) can be found on the product label.
- When installing the sealing system, the applicable accident prevention regulations, VDE rules, the applicable national health and safety regulations, and the rules and policies of your company must all be observed.
- The applicable national regulations governing the laying and filling of pipes and cables must be observed.
- Inspected in accordance with FHRK test specification GE101 without radial load.

## Installation conditions

- Breakouts, cracks and/or cavities in waterproof concrete core bores should be smoothed in advance.
- Casings must be rigid enough to withstand the compressive forces from the gasket insert and must have a smooth, circular inner surface. If casings are damaged they must first be tested in advance for usability.
- The media line (cable or pipe) to be sealed must be cleaned in advance and must not have any axial depressions or elevations in or around the sealing area.
- Compress the substrate and pipe substructure well before laying the pipe/cable, so that no sinking is possible.
- In addition to the usual standard tool, you also need the following tools and equipment in order to properly install the gasket insert:

### Tools:

- 1 extension
- 1 hexagon socket  
(size see installation steps)
- 1 hot air device

### Equipment:

- Lubricant
- Cleaning agent (solvent-free)
- Calliper gauge
- Cleaning cloth
- Sandpaper

- The seal to the medium pipe/cable/cable ducts must be performed in a WR concrete core bore hole, or in an already installed pipe sleeve (the location of the gasket insert must be observed > see installation step 3).

## Scope of delivery

- Curaflex Nova® gasket insert
- Installation instructions

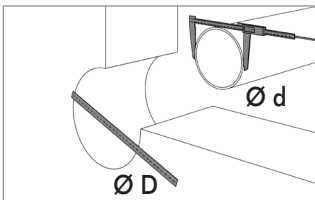
## Accessories (optional)

- 4 fixing brackets with screws
- Product No.: 1 88 0 600 004 2 9
- ITL nuts (9 units)
- Product No.: 1 88 0 600 009 0 0
- Aquagard primer (Curaflex® 1710), 1 liter for 4.0 sqm
- Product No.: 1 99 0 710 000 0 0
- Aquagard primer (Curaflex® 1711), 1/3 liters for 1.5 sqm
- Product No.: 1 99 0 711 000 0 0
- Aquagard special paint (Curaflex® 1715), 1 liters for 3.5 sqm
- Product No.: 1 99 0 715 000 0 0
- Aquagard special paint (Curaflex® 1716), 1/3 liters for 1.0 sqm
- Product No.: 1 99 0 716 000 0 0

## Installation steps

### 1: Take measurements

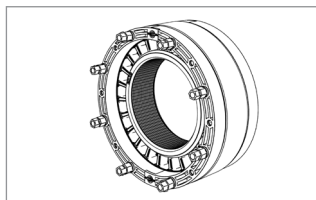
#### Curaflex Nova® Senso



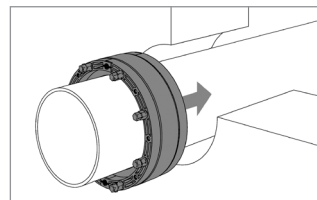
Determine the diameter of the core boring or pipe sleeve, and the media line and check it against the information on the carton.

### 2: Installing the gasket insert

#### Curaflex Nova® Senso



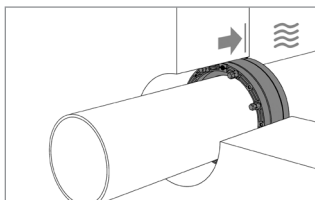
The white tissue material (in the rubber seal > sealing to the medium pipe) is not to be removed.



Slide the Curaflex Nova® Senso onto the media line and into the core boring/pipe sleeve ...

### 3a: Installation with WR concrete walls or pipe sleeves

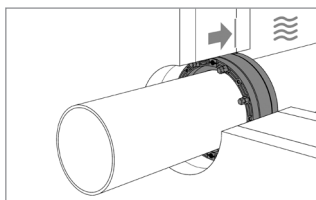
#### Curaflex Nova® Senso



... until the gasket insert is approximately flush with the outer wall (water / pressure side).

### 3b: Installation with double / element walls - sealing layer is the in-situ concrete (WR concrete)

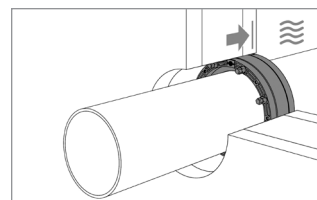
#### Curaflex Nova® Senso



Position the gasket insert in the sealing layer of the wall. Should there be a lack of clarity with regard to the location of the sealing layer, the approach must be coordinated with the planner or the wall manufacturer.

### 3c: Installation for double/element walls - sealing layer is the finished outer concrete shell

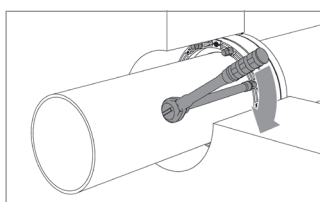
#### Curaflex Nova® Senso



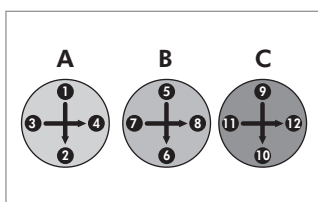
Position the gasket insert in the sealing layer of the wall. Should there be a lack of clarity with regard to the location of the sealing layer, the approach must be coordinated with the planner or the wall manufacturer.

## 4: Final Assembly

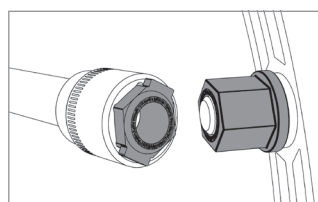
### Curaflex Nova® Senso



For the final assembly of the gasket insert, tighten the nuts (size 10).



Thereby, proceed alternating: crisscross every few turns in at least 3 intervals (A>B>C).



Proceed until the upper nuts twist off (ITL principle: Integrated Torque limiter; no special tools necessary.)

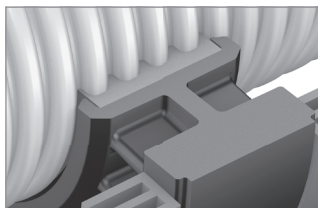
### ITL (Integrated Torque Limiter)



ITL automatically generates the optimal contact pressure for the secure sealing of the media line.



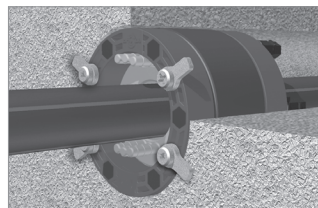
### STS (Soft Tight System)



Flexible and adaptable. Safety for pipes with a structured and sensitive surface.



### Optional: Fixing tabs



In case of higher pressure loading, fixing brackets can be screwed onto the frame ring, which is then an equivalent to the large ring solution.

### Optional: Aquagard



Pre-cut reinforced steel must be protected against corrosion. The Aquagard coating seals the core boring wall and thus prevents the water from under-running the gasket insert.

DOYMA products are continuously being further developed. Technical changes will be performed without prior notice.  
25 year warranty on all DOYMA products. **More information at [www.doyma.de](http://www.doyma.de)**

### DOYMA GmbH & Co

SEALING SYSTEMS  
FIRE PROTECTION SYSTEMS

Industriestr. 43-57  
28876 Oyten

Phone: 0 42 07/91 66-300  
Fax: 0 42 07/91 66-199

[www.doyma.de](http://www.doyma.de)  
[info@doyma.de](mailto:info@doyma.de)

25  
years  
guarantee

