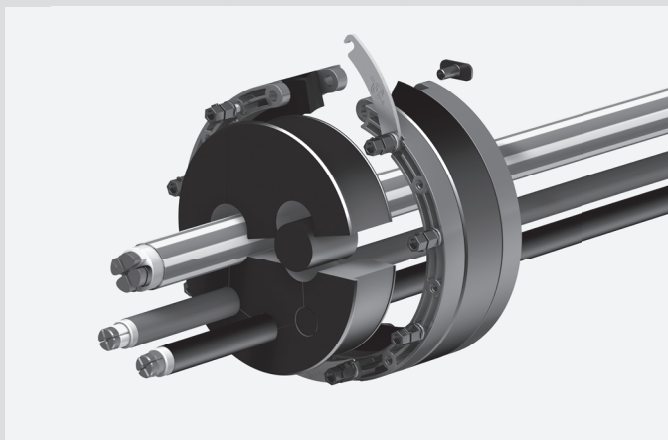


INSTALLATION INSTRUCTIONS

Curaflex Nova® Gasket inserts

- Curaflex Nova® Uno/M/T



Curaflex Nova® Uno/M/T

Intended use

The gasket insert Curaflex Nova® Uno/M/T is especially suitable for the sealing of several pipes and cables with a smooth surface.

Curaflex Nova® Uno/M/T is hinged, to accommodate sealing pipes and cables that have already been laid.

Please note:

- Gasket inserts do not act as fixing points or support bearings, but rather serve exclusively to elastically seal pipes and cables.
- The nut side of the gasket insert should point to the non-water exposed side.
- Slight axial movements of the pipes and cables are allowed. Additionally, fixing brackets that can be screwed onto the frame ring are optionally available (accessories fixing kit). These additionally secure the gasket insert under higher pressures.
- Curaflex® Gasket inserts are maintenance-free. When properly installed, a re-tightening of the bolt is not necessary.
- The relevant FHRK standard (minimum seal width) can be found on the product label.
- When installing the sealing system, the applicable accident prevention regulations, VDE rules, the applicable national health and safety regulations, and the rules and policies of your company must all be observed.
- The applicable national regulations governing the laying and filling of pipes and cables must be observed.
- Inspected in accordance with FHRK test specification GE101 without radial load.

Installation conditions

- Breakouts, cracks and/or cavities in waterproof concrete core bores should be smoothed in advance.
- Casings must be rigid enough to withstand the compressive forces from the gasket insert and must have a smooth, circular inner surface. If casings are damaged they must be tested in advance for usability.
- The conduit (cable or pipe) to be sealed must be cleaned in advance and must not have any axial depressions or elevations in or around the sealing area.
- Compress the substrate and pipe substructure well before laying the pipe/cable, so that no sinking is possible.
- In addition to the usual standard tool, you also need the following tools and equipment in order to properly install the gasket insert:

Tools:

- 1 extension
- 1 hexagon socket
(size see installation steps)

Equipment:

- Lubricant
- Cleaning agent (solvent-free)
- Calliper gauge
- Cleaning cloth

- The seal to the medium pipe/cable/cable ducts must be performed in a WR concrete core bore hole, or in an already installed pipe sleeve (the location of the gasket insert must be observed: see installation step 3).

Scope of delivery

- Curaflex Nova® Gasket insert
- Interchangeable insert
- Installation instructions

Accessories (optional)

4 fixing brackets with screws

Product No.: 1 88 0 600 004 2 9

ITL nuts (9 units)

Product No.: 1 88 0 600 009 0 0

Aquagard primer (Curaflex® 1710), 1 liter for 4.0 sqm

Product No.: 1 99 0 710 000 0 0

Aquagard primer (Curaflex® 1711), 1/3 liters for 1.5 sqm

Product No.: 1 99 0 711 000 0 0

Aquagard special paint (Curaflex® 1715), 1 liters for 3.5 sqm

Product No.: 1 99 0 715 000 0 0

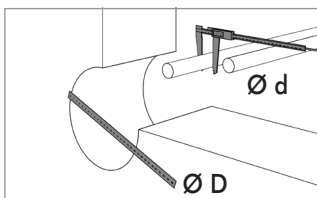
Aquagard special paint (Curaflex® 1716), 1/3 liters for 1.0 sqm

Product No.: 1 99 0 716 000 0 0

Installation steps

1: Take measurements

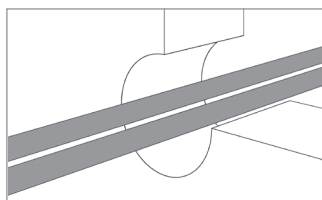
Curaflex Nova® Uno/M/T



Determine the diameter of the core boring or pipe sleeve, and the media line and check it against the information on the carton.

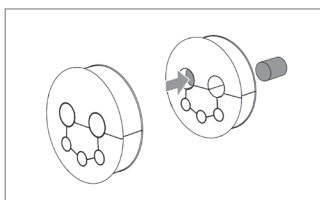
2: Inserting the interchangeable insert

Curaflex Nova® Uno/M/T



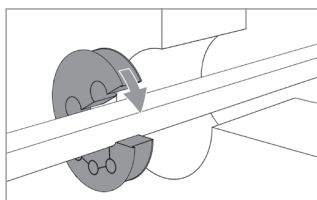
Apply a lubricant (DOYMA 2780, detergent, etc.) to the cable prior to the assembly.

Curaflex Nova® Uno/M/T

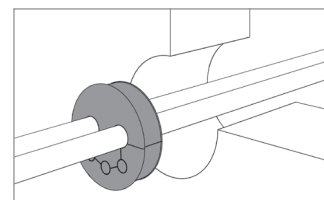


Remove the rubber cores from the interchangeable insert.

Curaflex Nova® Uno/M/T

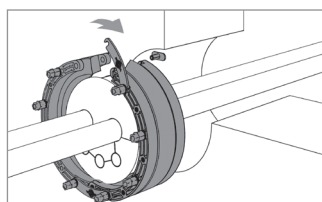


Place the interchangeable insert around the cable.



3: Installing the gasket insert

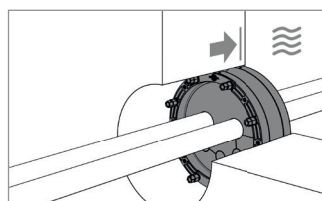
Curaflex Nova® Uno/M/T



Pull out the quick-release fastener and the opposite pin, unfold the gasket insert and place it centrally around the rubber element. Close the quick-release fastener. Reinsert the pin.

3a: Installation with WR concrete walls or pipe sleeves

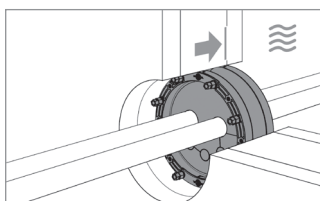
Curaflex Nova® Uno/M/T



Slide the gasket insert into the core boring/pipe sleeve until it is flush with the outer wall (water/pressure side).

3b: Installation for double/element walls - sealing layer is the in-situ concrete (WR concrete)

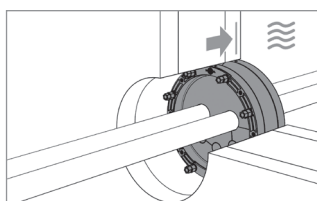
Curaflex Nova® Uno/M/T



Position the gasket insert in the sealing layer of the wall. Should there be a lack of clarity with regard to the location of the sealing layer, the approach must be coordinated with the planner or the wall manufacturer.

3c: Installation for double/element walls - sealing layer is the finished outer concrete shell

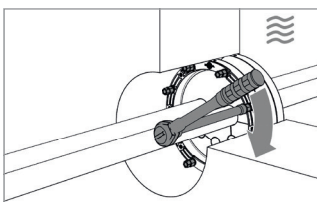
Curaflex Nova® Uno/M/T



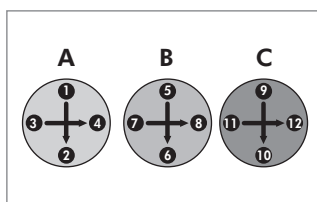
Position the gasket insert in the sealing layer of the wall. Should there be a lack of clarity with regard to the location of the sealing layer, the approach must be coordinated with the planner or the wall manufacturer.

4: Final Assembly

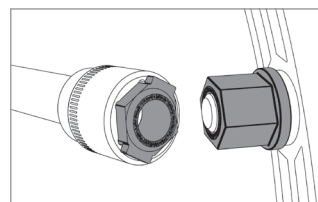
Curaflex Nova® Uno/M/T



For the final assembly of the gasket insert, tighten the nuts (size 10).



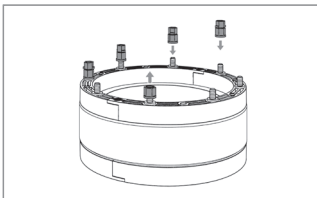
Thereby, proceed alternating: crisscross every few turns in at least 3 intervals (A>B>C).



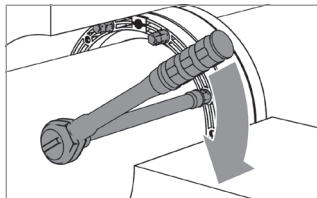
Proceed until the upper nuts twist off (ITL principle: Integrated Torque limiter; no special tools necessary.)

5 or 6: Re-tighten gasket insert again (e.g. after disassembly)

Curaflex Nova® Uno/M/T



Alternately remove already separated nuts crosswise in several intervals. Use new nuts (optionally available), and continue the installation as described under 4, or ...



... Tightening of the still remaining nuts (size 11), alternately crisscross, each with 5 nm torque.

DOYMA products are continuously being further developed. Technical changes will be performed without prior notice.
25 year warranty on all DOYMA products. **More information at www.doyma.de**

DOYMA GmbH & Co

SEALING SYSTEMS
FIRE PROTECTION SYSTEMS

Industriestr. 43-57
28876 Oyten

Phone: 0 42 07/91 66-300
Fax: 0 42 07/91 66-199

www.doyma.de
info@doyma.de

25
years
guarantee

