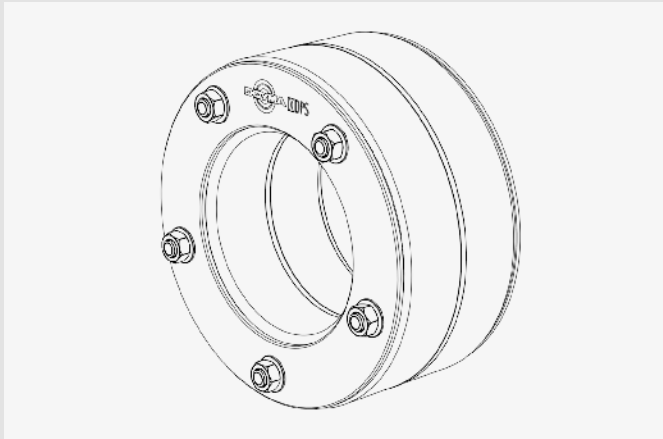


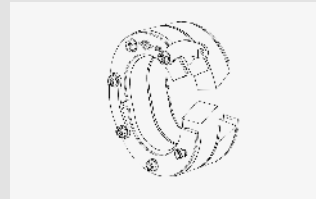
INSTALLATION INSTRUCTIONS

Curaflex® Gasket inserts

- Curaflex® A, B, C, D, E, F und A40, B40, C40, D40, E40, F40; .../M, .../O
- Curaflex® Quick In A, B, C, D, E, F und A40, B40, C40, D40, E40, F40



Curaflex® C



Curaflex® Quick In C

Dear Customer,

Thank you for choosing a quality product from our range.

Please read this message and the included installation instructions in full before installing or processing our products and keep both in a safe place after installation.

Safety instructions:

- Our products may only be installed by persons with the necessary specialist knowledge.
- For your own protection and the protection of third parties, the work area and pipe trenches must be properly constructed and secured in accordance with the applicable regulations.
- When installing the sealing system, the recognised rules of technology, the relevant regulations of the employers' liability insurance associations, the VDE regulations and the applicable safety and accident regulations must be observed. Parts of the body may be crushed or other serious injuries may occur when tensioning or fixing the products in place.
- The safety data sheets must be observed.
- Check that the delivered product is complete (the scope of delivery is listed separately in the installation instructions) and check all individual parts for any damage. Only undamaged parts may be installed.
- Check that the product is suitable for its intended use using the installation instructions. If there are any particular demands,

please clarify the use of the product with us in advance. Request our checklists for this purpose or download them from www.doyma.com.

Any liability on our part is excluded for misuse!

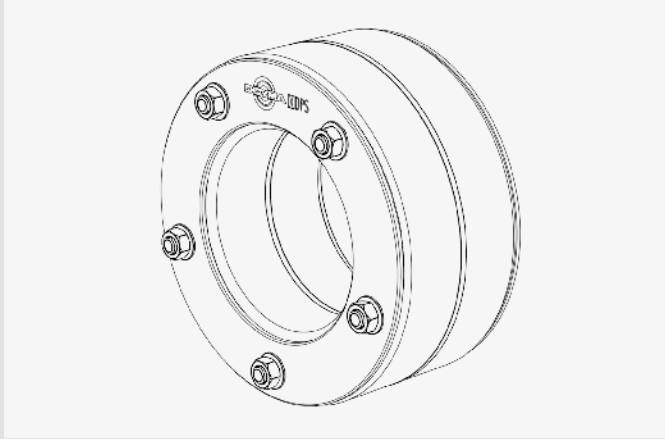
- Finally, please observe the instructions for the tools and equipment required for installation.

Industrial property rights:

- Our industrial property rights and those of third parties must be observed. In all other respects, our Terms and Conditions of Sale and Delivery shall apply.

Disposal:

- Please observe the applicable regulations when disposing of components, accessories and packaging.



Curaflex® C



Curaflex® Quick In C

Intended use

Curaflex® gasket inserts are used to safely seal the annular space between the waterproof concrete core bore/casing and the media pipe/cable/smooth-walled cable conduit.

Please note:

- If there are multiple rows of bolts, tighten the nuts of the inner row of bolts first!
- Gasket inserts are not secure points or support bearings; they are only used for elastic sealing of pipes. Slightly axial movements of the pipes are permitted.
- The nut side of the gasket insert should face the non-water side.
- Curaflex® gasket inserts are maintenance-free. Once correctly installed, it's not necessary to re-tighten the bolts.
- The diameters of the pipe and casing/core bore must match the specifications on the carton or on the gasket insert.
- The relevant FHRK standard (minimum seal width) can be found on the product label.
- The applicable national regulations governing the laying and filling of pipes and cables must be observed.

Installation conditions

- Breakouts, cracks and/or cavities in waterproof concrete core bores should be smoothed in advance.
- Casings must be rigid enough to withstand the compressive forces from the gasket insert and must have a smooth, circular inner surface. If casings are damaged they must be tested in advance for usability.
- Sealing components for the medium pipe / cable / cable ducts must be installed in a waterproof WR concrete core bore, or in an already installed pipe sleeve.
- The conduit (cable or pipe) to be sealed must be cleaned in advance and must not have any axial depressions or elevations in or around the sealing area.
- Compress the substrate and pipe substructure well before laying the pipe/cable, so that no sinking is possible.
- In addition to the usual standard tool, you also need the following tools and equipment in order to properly install the gasket insert:

Tools:

- 1 torque spanner (not necessary for Curaflex® Nova with ITL)
- 1 extension
- 1 hexagon socket (size AF, see installation instructions)

Equipment:

- Lubricant
- Cleaning agent (solvent-free)
- Calliper gauge
- Cleaning cloth

Scope of delivery

- Curaflex® gasket insert
- Installation instructions

Accessories (optional)

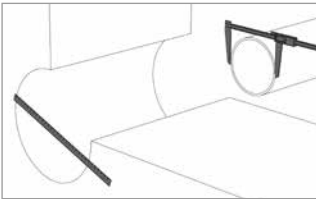
Aquagard primer (Curaflex® 1710/1711)

Aquagard special paint (Curaflex® 1715/1716)

Installation steps

1: Take measurements

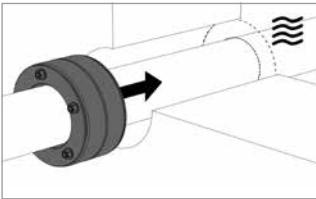
Curaflex® Gasket inserts



Determine the diameter of the core boring or pipe sleeve, and the media line and check it against the information on the carton.

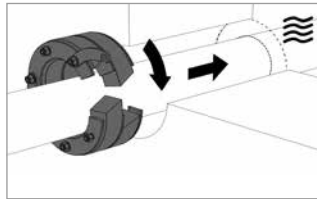
2: Insert the Curaflex® gasket insert

Position - Standard



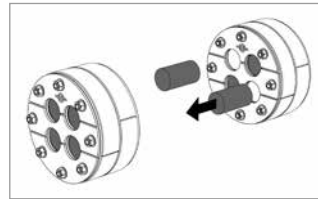
With waterproof concrete core bores the gasket insert must be installed as far as possible on the 'water side'.

Split variant (Quick In)



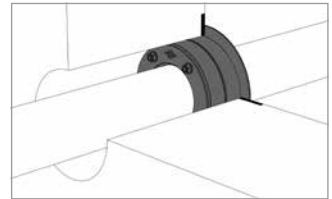
Open the quick release, fit the gasket insert around the pipe and close with the quick release. Continue with installation as described under 'Position – standard'.

Manifold



1: Curaflex® C/M with rubber cores
 2: Remove the rubber core(s) from the gasket insert before inserting into the pipe.
 Continue with installation as described under 'Position – standard'.

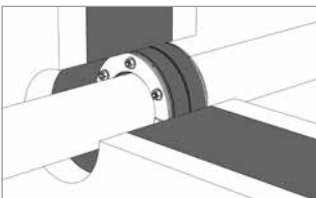
With large ring



Curaflex® B, D, E, F: the large ring must be placed on the wall (see detail). Curaflex® D and F must be installed on the 'pressure side'.

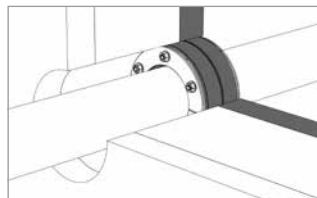
3: Install in partition walls with double elements

Sealing level: in-situ concrete



Position the gasket insert in the sealing level of the wall.
 In case of doubt in terms of where the sealing level is, clarify the procedure with the planner or the wall manufacturer.
The sealing level is the in-situ concrete (waterproof concrete)!

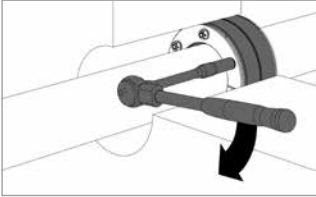
Sealing level: facade



Position the gasket insert in the sealing level of the wall.
 In case of doubt in terms of where the sealing level is, clarify the procedure with the planner or the wall manufacturer.
The sealing level is the outer concrete facade!

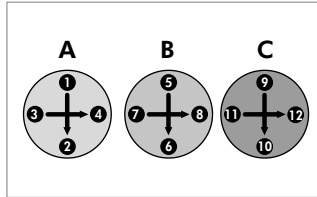
4: Final Assembly

Curaflex® Gasket insert



To finish installing the gasket insert, tighten **the nuts, alternating cross-wise** with several turns each, up to the specified torque at most (see table on page 4).

Tighten cross-wise



Thereby, proceed alternating: crisscross every few turns in at least 3 intervals (A>B>C).

Torque table for Curaflex® gasket inserts

Maximale Drehmomente			
Bolt-Ø	wrench size	Curaflex® Gasket insert	
		A - F Quick In A - Quick In F A/O - F/O A/M - E/M	A 40 - F 40 Quick In A 40 - Quick In F 40
M 5	8	3 Nm	2 Nm
M 6	10	8 Nm	5 Nm
M 8	13	12 Nm	7 Nm
M 10	17	25 Nm	15 Nm
M 12	19	30 Nm	18 Nm

Attention!

In the case of thin-walled and/or expanded plastic pipes, reduced torques are needed for the clamping nuts, as otherwise the pipes may be damaged.

Sample recommendation:

Tighten sewer headers DN 110 with Curaflex® A – F in core bore DN 200 with max. 5 Nm torque. Tighten sewer headers DN 110 with Curaflex® A40 – F40 in core bore DN 150 with max. 3 Nm torque.

Accessories optional

Aquagard concrete sealing for core bores



Pre-cut reinforced steel must be protected against corrosion. The Aquagard coating seals the core boring wall and thus prevents the water from under-running the gasket insert.

Aquagard base primer (Curaflex® 1710/1711)

Base coat/primer for Aquagard special paint.

The primer penetrates deep into the capillaries and air bubbles in the concrete and seals these so they are permanently waterproof. This prevents water from getting into the gasket insert this way.

Aquagard special paint (Curaflex® 1715/1716)

Special paint for sealing core bores. Aquagard special paint seals the surface of the core bore wall and at the same time protects any pre-cut reinforcement steel from corrosion.

Notes







DOYMA products are continuously being further developed. Technical changes will be performed without prior notice.
25 year warranty on all DOYMA products. **More information at www.doyma.de**

DOYMA GmbH & Co

SEALING SYSTEMS
FIRE PROTECTION SYSTEMS

Industriestr. 43-57
28876 Oyten

Phone: 0 42 07/91 66-300
Fax: 0 42 07/91 66-199

www.doyma.de
info@doyma.de

25
years
guarantee

