

INSTALLATION INSTRUCTIONS

HKD DOMO

- HKD DOMO-NW
- HKD DOMO-NW-T
- HKD DOMO-NW-FL
- HKD DOMO-NW-M
- HKD DOMO-NW-B
- HKD DOMO-NW-NK
- HKD DISO
- HKD DOMO-DW
- HKD DOMO-DW-T
- HKD DOMO-DW-FL
- HKD DOMO-DW-M
- HKD DOMO-DW-B
- HKD DOMO-DW-NK



HKD DOMO-NW / HKD DOMO-DW



HKD DOMO-NW-T / HKD DOMO-DW-T



HKD DOMO-NW-FL / HKD DOMO-DW-FL



HKD DOMO-NW-M / HKD DOMO-DW-M



HKD DOMO-NW-B / HKD DOMO-DW-B

Dear Customer,

Thank you for choosing a quality product from our range.

Please read this message and the included installation instructions in full before installing or processing our products and keep both in a safe place after installation.

Safety instructions:

- Our products may only be installed by persons with the necessary specialist knowledge.
- For your own protection and the protection of third parties, the work area and pipe trenches must be properly constructed and secured in accordance with the applicable regulations.
- When installing the sealing system, the recognised rules of technology, the relevant regulations of the employers' liability insurance associations, the VDE regulations and the applicable safety and accident regulations must be observed. Parts of the body may be crushed or other serious injuries may occur when tensioning or fixing the products in place.
- The safety data sheets must be observed.
- Check that the delivered product is complete (the scope of delivery is listed separately in the installation instructions) and check all individual parts for any damage. Only undamaged parts may be installed.
- Check that the product is suitable for its intended use using the installation instructions. If there are any particular demands,

please clarify the use of the product with us in advance. Request our checklists for this purpose or download them from www.doyma.com.

Any liability on our part is excluded for misuse!

- Finally, please observe the instructions for the tools and equipment required for installation.

Industrial property rights:

- Our industrial property rights and those of third parties must be observed. In all other respects, our Terms and Conditions of Sale and Delivery shall apply.

Disposal:

- Please observe the applicable regulations when disposing of components, accessories and packaging.

- HKD DOMO-NW
- HKD DOMO-NW-T
- HKD DOMO-NW-FL
- HKD DOMO-NW-M
- HKD DOMO-NW-B
- HKD DOMO-NW-NK
- HKD DISO
- HKD DOMO-DW
- HKD DOMO-DW-T
- HKD DOMO-DW-FL
- HKD DOMO-DW-M
- HKD DOMO-DW-B
- HKD DOMO-DW-NK



HKD DOMO-NW / HKD DOMO-DW



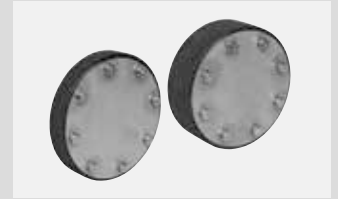
HKD DOMO-NW-T / HKD DOMO-DW-T



HKD DOMO-NW-FL / HKD DOMO-DW-FL



HKD DOMO-NW-M / HKD DOMO-DW-M



HKD DOMO-NW-B / HKD DOMO-DW-B

Intended purpose

The HKD DOMO gasket insert is especially suitable for sealing pipes/cables with a smooth surface in standard dimensions. The gasket can be installed in waterproof concrete core bores and onsite casings.

HKD DOMO-....-T: split variant, for sealing pipes that have already been laid

HKD DOMO-....-FL: with additional large ring for axial mounting

HKD DOMO-....-M: for multiple pipes

HKD DOMO-....-B: for permanent sealing of on-site casings or waterproof concrete core bores.

HKD DOMO-....-NK: with soft EPDM rubber, ideal for plastic jacket pipes

Please note

- Install gasket inserts as far as possible on the 'non-water side'
- Gasket inserts are not secure points or support bearings; they are only used for elastic sealing of pipes/cables.
- Before installation, clean the core bore/casing and pipe/cable carefully. Smooth out uneven points in the surface. We also recommend sealing the core bore with Aquagard (Curaflex® accessory), especially in cases where water pressure is a consideration.
- The relevant FHRK standard (minimum seal width) can be found on the product label.
- The applicable national regulations governing the laying and filling of pipes and cables must be observed.

- HKD DOMO-NW
- HKD DOMO-NW-T
- HKD DOMO-NW-FL
- HKD DOMO-NW-M
- HKD DOMO-NW-B
- HKD DOMO-NW-NK
- HKD DISO
- HKD DOMO-DW
- HKD DOMO-DW-T
- HKD DOMO-DW-FL
- HKD DOMO-DW-M
- HKD DOMO-DW-B
- HKD DOMO-DW-NK

Installation conditions

- Breakouts, cracks and/or cavities in waterproof concrete core bores should be smoothed in advance.
- Casings must be rigid enough to withstand the compressive forces from the gasket insert and must have a smooth, circular inner surface. If casings are damaged they must be tested in advance for usability.
- Sealing components for the medium pipe/cable/cable conduit must be installed in a waterproof WR concrete core bore or a preinstalled casing.
- The conduit (cable or pipe) to be sealed must be cleaned in advance and must not have any axial depressions or elevations in or around the sealing area.
- Compress the substrate and pipe substructure well before laying the pipe/cable, so that no sinking is possible.
- In addition to the usual standard tool, you also need the following tools and equipment in order to properly install the gasket insert:

Tools:

- 1 torque spanner
- 1 extension
- 1 hexagon socket
(for size, see installation steps)

Equipment:

- Lubricant
- Cleaning agent (solvent-free)
- Calliper gauge
- Cleaning cloth
- Sandpaper

Scope of delivery

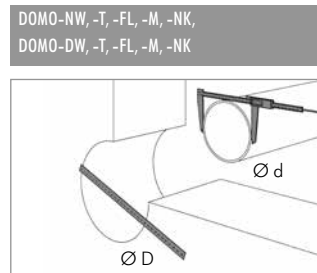
- HKD DOMO gasket insert
- Installation notes

Accessories (optional)

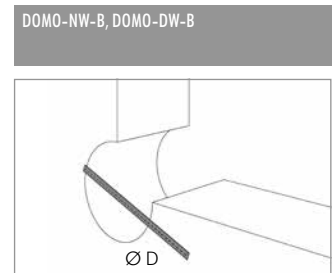
- Aquagard primer (Curaflex® 1710), 1 litre for 4.0 m²
Article no. 1 99 0 710 000 0 0
- Aquagard primer (Curaflex® 1711), 1/3 litre for 1.5 m²
Article no. 1 99 0 711 000 0 0
- Aquagard special paint (Curaflex® 1715), 1 litres for 3.5 m²
Article no. 1 99 0 715 000 0 0
- Aquagard special paint (Curaflex® 1716), 1/3 litre for 1.0 m²
Article no. 1 99 0 716 000 0 0

Installation steps

1: Take measurements



Determine the diameter of the core boring or pipe sleeve, and the medium line and check it against the information on the carton.



Determine the diameter of the core boring or pipe sleeve and check it against the information on the product label.

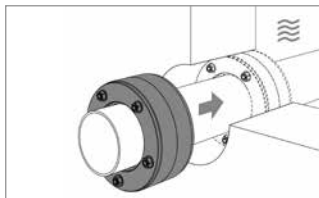
Maximum torque

Bolt diameter	Width across flats	Maximum torque	
		HKD DOMO-NW / -DW HKD DOMO-NW-T / -DW-T HKD DOMO-NW-FL / -DW-FL HKD DOMO-NW-M / -DW-M HKD DOMO-NW-B / -DW-B	HKD DOMO-NW-NK HKD DOMO-DW-NK
M6	10	6 Nm	5 Nm
M8	13	10 Nm	7 Nm

Reduced torque may be necessary for thin plastic pipes, in order to prevent damage to the pipe. After installation visually inspect the installation to ensure that the gasket insert is touching the pipe and the core bore on all sides.

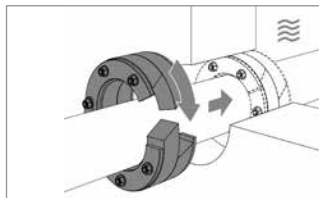
2: Installing the gasket insert

DOMO-NW, DOMO-DW, DOMO-NW-NK, DOMO-DW-NK



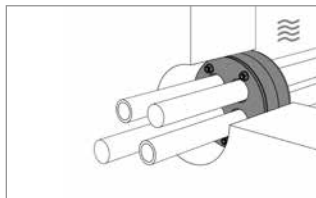
The clamping nuts of the gasket insert should face the 'non-water side'. Push the gasket insert into the wall opening as far as possible until the gasket insert is flush with the 'water side'. Then lay the pipe.

DOMO-NW-T, DOMO-DW-T



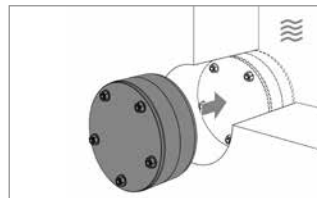
Open the gasket insert and place around the pipe. Close the gasket insert. Push the gasket insert into the wall opening as far as possible until the gasket insert is flush with the 'water side'.

DOMO-NW-M, DOMO-DW-M



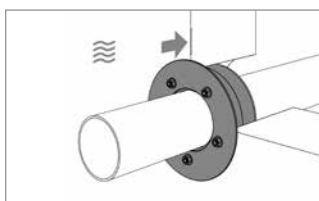
Push the gasket insert into the wall opening accordingly as far as possible until the gasket insert is flush with the 'water side'. Then lay the pipes.

DOMO-NW-B, DOMO-DW-B



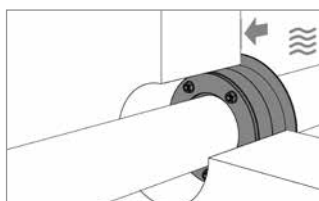
Push the gasket insert into the wall opening accordingly as far as possible until the gasket insert is flush with the 'water side'.

DOMO-NW-FL, DOMO-DW-FL



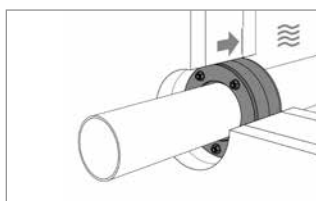
Install the gasket insert with the large ring on the 'water side'. The large ring must be placed on the wall.

DOMO-NW-FL-K, DOMO-DW-FL-K



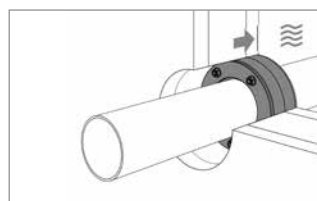
Install the gasket insert with the large ring on the 'water side'. The large ring must be placed on the wall.

Installation for double/element walls - sealing layer is the in-situ concrete (WR concrete)



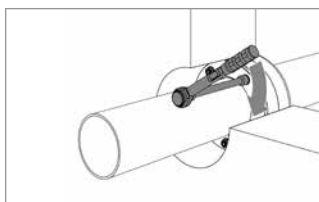
Position the gasket insert in the sealing layer of the wall. Should there be a lack of clarity with regard to the location of the sealing layer, the approach must be coordinated with the planner or the wall manufacturer. Alternatively we recommend using HKD DOMO-NW-NK respectively DOMO-DW-NK.

Installation for double/element walls - sealing layer is the finished outer concrete shell

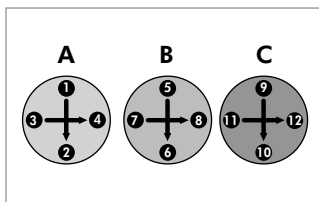


3: Tighten the gasket insert

DOMO-NW, DOMO-NW-T, DOMO-NW-FL, DOMO-NW-M, DOMO-NW-B, DOMO-NW-NK, DOMO-DW, DOMO-DW-T, DOMO-DW-FL, DOMO-DW-M, DOMO-DW-B, DOMO-DW-NK



For the final assembly of the gasket insert, tighten the nuts.



Thereby, proceed alternating: crisscross every few turns in at least 3 intervals (A>B>C). Observe max. torques (see table).

DOYMA products are constantly evolving. Technical changes may be implemented without notice.

For more information, visit www.doyma.de

DOYMA GmbH & Co

SEALING SYSTEMS
FIRE PROTECTION SYSTEMS

Industriestr. 43-57
28876 Oyten

Phone: 0 42 07/91 66-300
Fax: 0 42 07/91 66-199

www.doyma.de
info@doyma.de