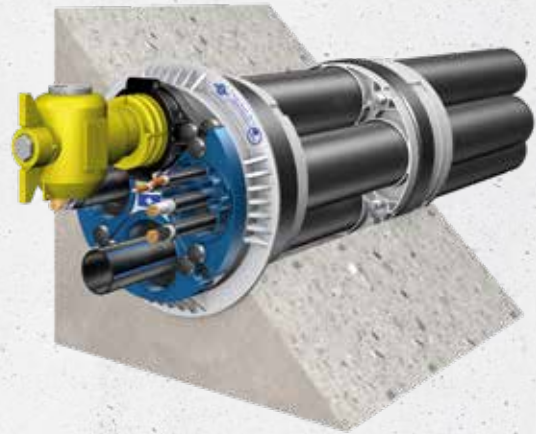


# Quadro-Sicura® Nova 2

for building with basements

**PRESSING WATER**

- Multi-compartment house lead-in **with sealing on both sides**
- Use in **on-site casing** or **waterproof concrete core bore** (white tank)
- For the following building services: **gas, water, electricity and telecommunications**



## PRODUCT ADVANTAGES

- Non-corrosive and non-conductive through manufacturing from high-performance plastic
- Leak-tight against gas and pressing water
- Installation without torque spanner thanks to turn-stop system
- Infinitely variable modular gaskets for water and energy
- Extremely easy installation
- Light component weight
- Easy assignment of building service sealing through symbol identification

## TECHNICAL DETAILS

- DVGW and SVGW-approved
- Methane gas resistant
- Dry installation
- Optional installation in accordance with DIN 18195/ DIN 18533 possible
- 100% separation of building services; each section is sealed separately
- Variable arrangement of individual compartments possible
- The entire component is freely rotatable according to the connection requirements
- Relining possible when connecting jacket pipes
- Connection option for rigid or flexible jacket pipes DN 75; larger or smaller diameters are possible via expansion sleeves or reductions
- All building services are given dummy plugs that are leak-tight against gas and pressing water

Supply lines	Pipe/cable Ø
Gas	Gas house lead-ins RMA, Schuck, VAF Voigt, Burger: DN 25
Water	Outer diameter 32 mm, 40 mm, 50 mm; optional outer diameter 63 mm
Electricity	Outer diameter of 26–36 mm; optional outer diameter 36–47 mm
Telecommunications	Outer diameter: 2 × 5–7 mm, 3 × 7–13 mm, 1 × 14–18 mm and 1 × 19–22 mm

Building	Dimensions
Core bore/casing Ø	199–204 mm
Wall thicknesses	150–550 mm

Further dimensions and versions available upon request.

For gas house lead-in	Article number
For RMA gas house lead-in	2421 000 000 00
For Schuck gas house lead-in	2422 000 000 00

Prices do not include fixtures and pipes.