



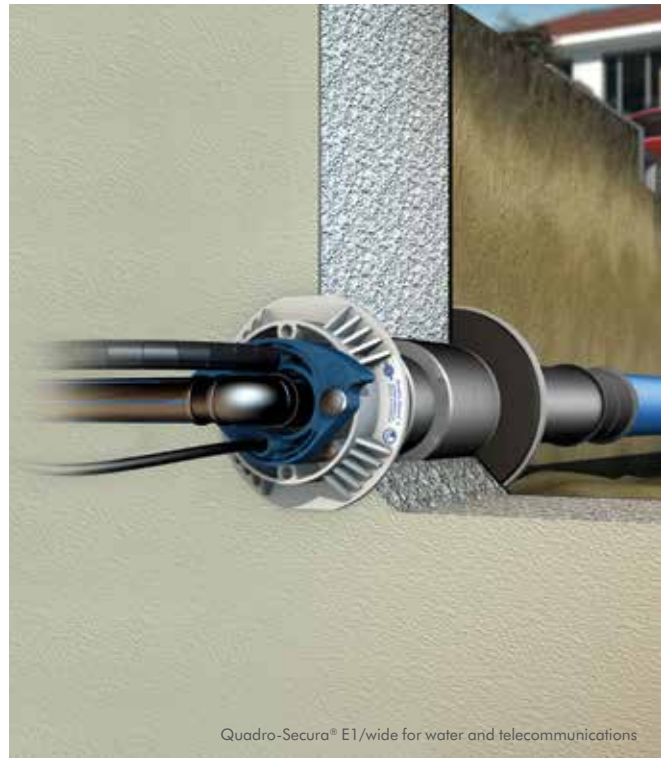
Quadro-Sicura® single-compartment building owner's package

FOR BUILDINGS WITH BASEMENTS

Sealing on both sides: Quadro-Sicura® E1/wide



Quadro-Sicura® E1/wide for gas



Quadro-Sicura® E1/wide for water and telecommunications

APPLICATION

Single-compartment house lead-in with sealing on both sides. Additional seal flange on the outside wall in accordance with DIN 18533 for sealing tanking membranes (black tank). Also suitable for waterproof concrete core bores and twin/element walls!

For the following building services: gas, water, electricity and telecommunications. **Completely equipped with the required accessories.**

PRODUCT ADVANTAGES

- DVGW-approved products as per VP 601 (B1)
- Building service is pre-assembled and given dummy plugs that are leak-tight against gas and pressing water
- Certified leak-tight against gas and pressing water in accordance with DIN 18322
- The sealing system is certified as 'radon-tight'
- Space-saving installation of building/mains connections and associated connection lines
- Cost-effective when used in a casing or core bore DN 100 (99–103 mm)
- Subsequent replacement of pipes possible (relining)*
- Pipes can be laid independently from construction progress*
- Universal sealing for all standard pipe diameters
- Can be used for all standard flexible gas house lead-in combinations/sealing for RMA and Schuck version 1 lead-ins included in package
- Optional sealing in accordance with DIN 18195/DIN 18533 possible

* when connecting jacket pipes; optional accessories

COMPONENTS/SCOPE OF DELIVERY

VERSION 1: gas (RMA + SCHUCK)



Quadro-Sicura® E1/wide
Gas with wide outer seal

1 × Quadro-Sicura® E1/wide

Including pre-assembled building service seal

Gas: DN 25 RMA and Schuck gas house lead-ins

Core bore/casing diameter:
99–103 mm

Wall thickness: 160–550 mm



1 × double sleeves (2707)

For connecting and extending cable protection pipes.



1 × gas ring plug

For preventing ingress of sand.
Gas-permeable.



1 × Schuck extension set

For the gas house lead-in (RMA already pre-assembled).

Quadro-Sicura® single-compartment
building owner's package
for buildings with basements

Version 1

Article number

2818 000 000 92

VERSION 2: water, electricity, telecommunications



Quadro-Sicura® E1/wide
Water/electricity, telecommunica-
tions with wide outer seal

1 × Quadro-Sicura® E1/wide

Including pre-assembled building service seal

Water or electricity: outer diameter
23–40 mm

Telecom: up to five lines with 2 × 5–7 mm,
2 × 7–13 mm, and 1 × 12–16 mm

Core bore/casing diameter:
99–103 mm

Wall thickness: 160–550 mm



1 × double sleeves (2707)

For connecting and extending cable protection pipes.



1 × jacket pipe end plugs (2704)

For sealing the jacket pipes and lines.

Quadro-Sicura® single-compartment
building owner's package
for buildings with basements

Version 2

Article number

2810 000 025 92

Prices do not include fixtures and pipes.