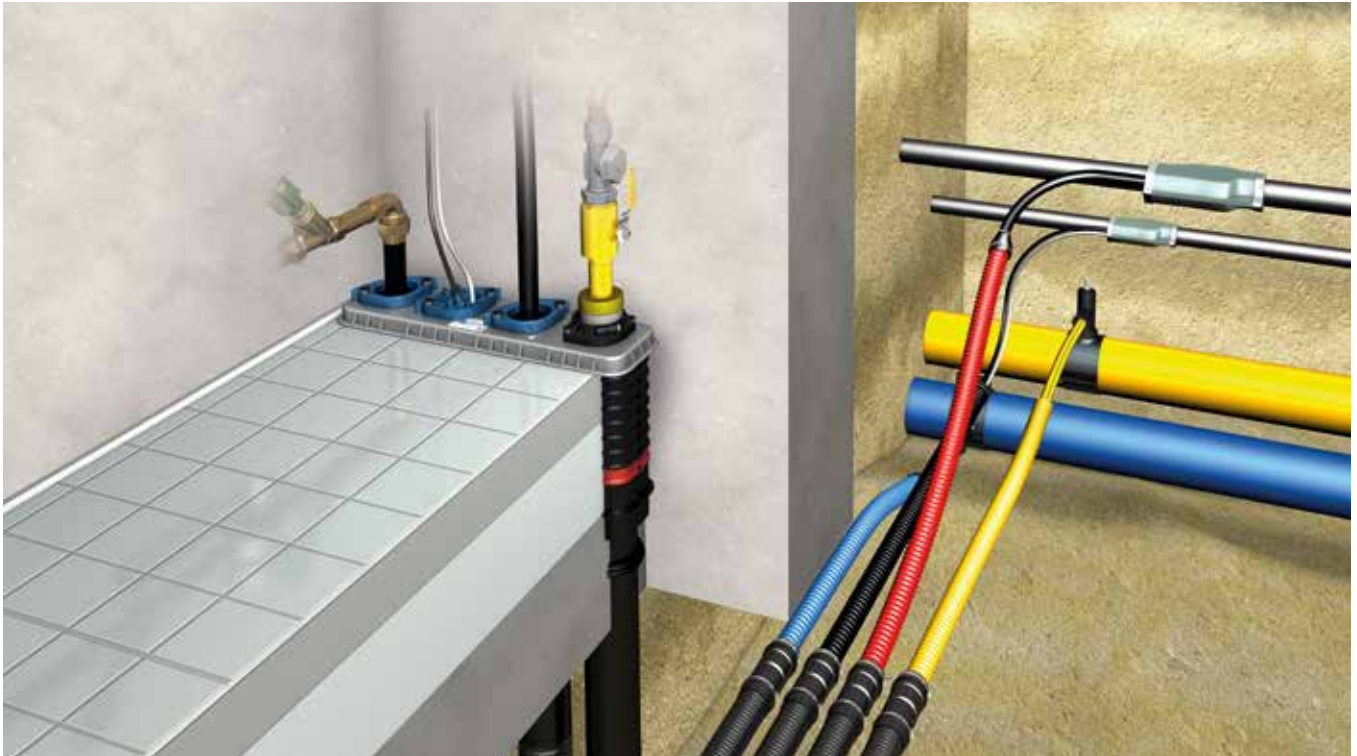




Quadro-Sicura® multi-compartment building owner's package **All inclusive** FOR BUILDINGS WITHOUT BASEMENTS

Everything's included, everything's assembled: your all-round carefree solution!



APPLICATION

Multi-compartment house lead-in as a series version.
Use in unfinished structures to be made from waterproof concrete.

For the following building services: gas, water, electricity and telecommunications. **Completely equipped with the required accessories.**

Improved installation thanks to visual confirmation



Visual confirmation: top edge of casing clearly and visibly snaps into the holder (arrows)



Pipe sleeve pressure-tested at the plant – now with nominal/outer diameter 90 (inner diameter 78)

PRODUCT ADVANTAGES

- DVGW-approved products as per VP 601 (B1)
- All building services are pre-assembled and given dummy plugs that are leak-tight against gas and pressing water
- Certified leak-tightness for gas and pressing water in accordance with DIN 18322: maximum safety by separating all supply lines
- The sealing system is certified as 'radon-tight'
- Compact and space-saving installation of building and mains connections and associated fittings
- Flexible assignment of individual compartments possible
- Subsequent replacement of pipes possible (relining)
- Supply pipes can be laid independently from construction progress
- Universal sealing for all standard pipe diameters
- Can be used for all standard flexible gas house lead-in combinations/sealing for RMA and Schuck lead-ins included in package
- Bend-resistant jacket pipe for compliance with bending radii
- Jacket pipe systems pressure-tested at the plant (test seal)
- Sealing for disposal pipes included in package (four HKD wall collars)
- No on-site leak test in accordance with DVGW G459-1 required

COMPONENTS/SCOPE OF DELIVERY

1 × Quadro-Sicura® Basic MB-R4+

Installation part including pre-assembled building service seals:

Gas: DN 25 RMA and Schuck gas house lead-ins

Water: outer diameter 32, 40, 50 mm

Electricity: outer diameter 26–36 mm

Telecom: up to seven lines with
2 × 5–7 mm, 3 × 7–13 mm,
1 × 14–18 mm and 1 × 19–22 mm

1 × Quadro-Sicura® Basic FUBO-E-R4+

Cast-in part for embedding in the floor slab, including bend-resistant jacket pipes with nominal/outer diameter 90 (inner diameter 78) (lengths: 3 m, 6 m, 10 m or 15 m).



25 years
guarantee

Quadro-Sicura® Basic R4+ consisting of:
Basic MB-R4+ (installation part) and Basic
FUBO-E-R4+ (cast-in part)



4 × connecting sleeves (2726)

For extending the bend-resistant jacket pipes.



4 × jacket pipe end plugs (2704)

For sealing the jacket pipes and lines.



1 × Schuck extension set

For sealing the Schuck gas house lead-in (RMA pre-assembled)



4 × HKD wall collars DN 100

For sealing disposal pipes in concrete walls or floor slabs made of water-proof concrete



1 × lubricant (2780)



Quadro-Sicura® multi-compartment building owner's package	Article number
Incl. 3 m bend-resistant jacket pipe	2758 000 090 93
Incl. 6 m bend-resistant jacket pipe	2758 000 090 96
Incl. 10 m bend-resistant jacket pipe	2758 000 090 91
Incl. 15 m bend-resistant jacket pipe	2758 000 090 95

Prices do not include fixtures and pipes.

