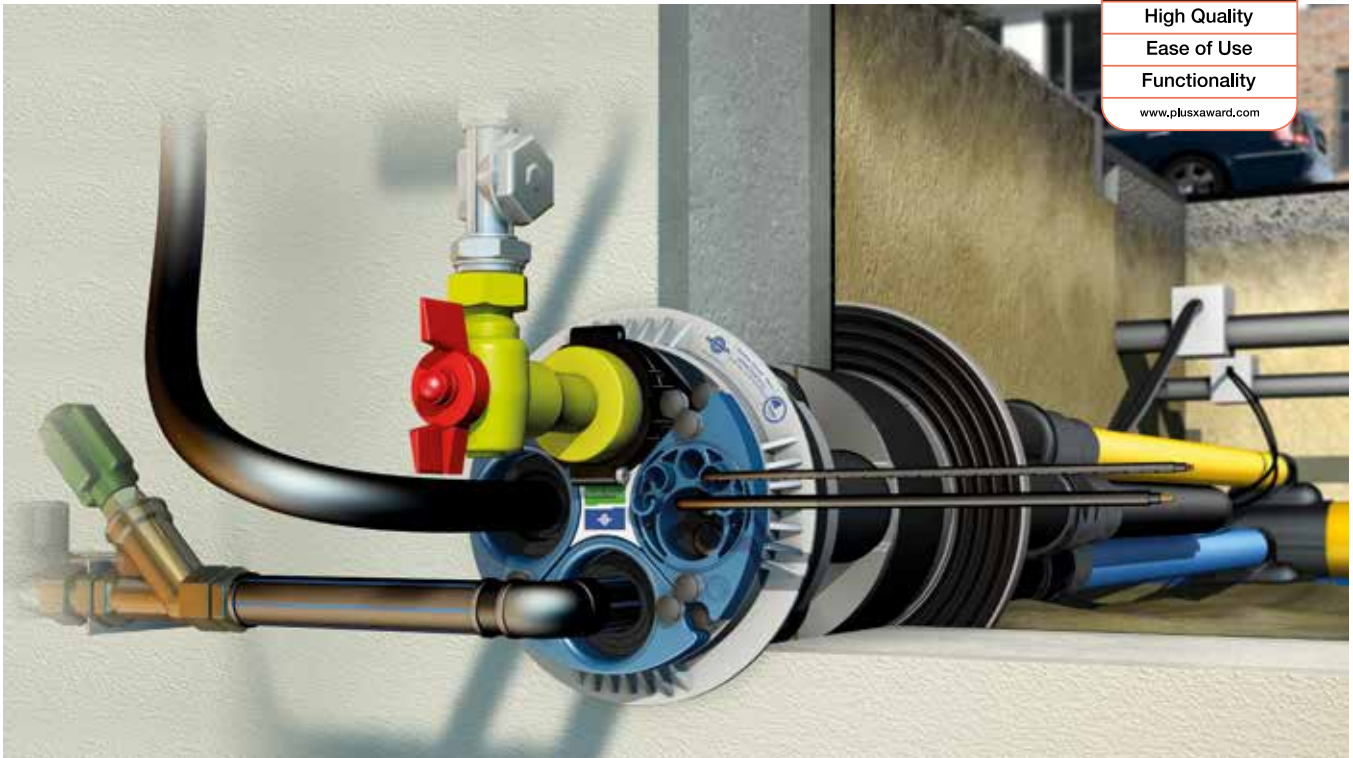




Quadro-Sicura® multi-compartment building owner's package **All inclusive** FOR BUILDINGS WITH BASEMENTS

Everything's included, everything's assembled: your all-round carefree solution!



APPLICATION

Multi-compartment house lead-in with sealing on both sides. Additional seal flange on the outside wall in accordance with DIN 18533 for sealing tanking membranes (black tank). Also suitable for waterproof concrete core bores and twin/element walls!

For the following building services: gas, water, electricity and telecommunications. **Completely equipped with the required accessories.**

PRODUCT ADVANTAGES

- DVGW-approved products as per VP 601 (B1)
- All building services are pre-assembled and given dummy plugs that are leak-tight against gas and pressing water
- Certified leak-tightness for gas and pressing water in accordance with DIN 18322: maximum safety by separating all supply lines
- The sealing system is certified as 'radon-tight'
- Compact and space-saving installation of building and mains connections and associated fittings
- Cost-effective when used in a casing or core bore DN 200 (199–203 mm)
- Flexible assignment of individual compartments possible
- Subsequent replacement of pipes possible (relining)*
- Supply pipes can be laid independently from construction progress*
- Universal sealing for all standard pipe diameters
- Can be used for all standard gas house lead-in combinations/ sealing for RMA and Schuck lead-ins included in package
- Outer sealing with ITL system for optimal contact pressure

* when connecting jacket pipes; optional accessories

COMPONENTS/SCOPE OF DELIVERY

1 × Quadro-Sicura® Nova 1/wide

Including pre-assembled building service seals:

Gas: DN 25 RMA and Schuck gas house lead-ins

Water: outer diameter 32, 40, 50 mm

Electricity: outer diameter 26–36 mm

Telecom: up to seven lines with 2 × 5–7 mm,
3 × 7–13 mm, 1 × 14–18 mm and
1 × 19–22 mm

Core bore/casing diameter: 199–203 mm

Wall thickness: 240–550 mm



Quadro-Sicura® Nova 1/wide
With wide outer seal



4 × double sleeves (2707)

For connecting and extending the cable protection pipes (2775). Not suitable for bend-resistant jacket pipes.



4 × jacket pipe end plugs (2704)

For sealing the jacket pipes and lines.



1 × Schuck extension set

For sealing the Schuck gas house lead-in (RMA pre-assembled)



1 × lubricant (2780)



Quadro-Sicura® multi-compartment building owner's package All inclusive for buildings with basements	Article number
	2418 000 000 94

Prices do not include fixtures and pipes.



GOES WITH: Curaflex® building owner's disposal package

FOR BUILDINGS WITH BASEMENTS

