

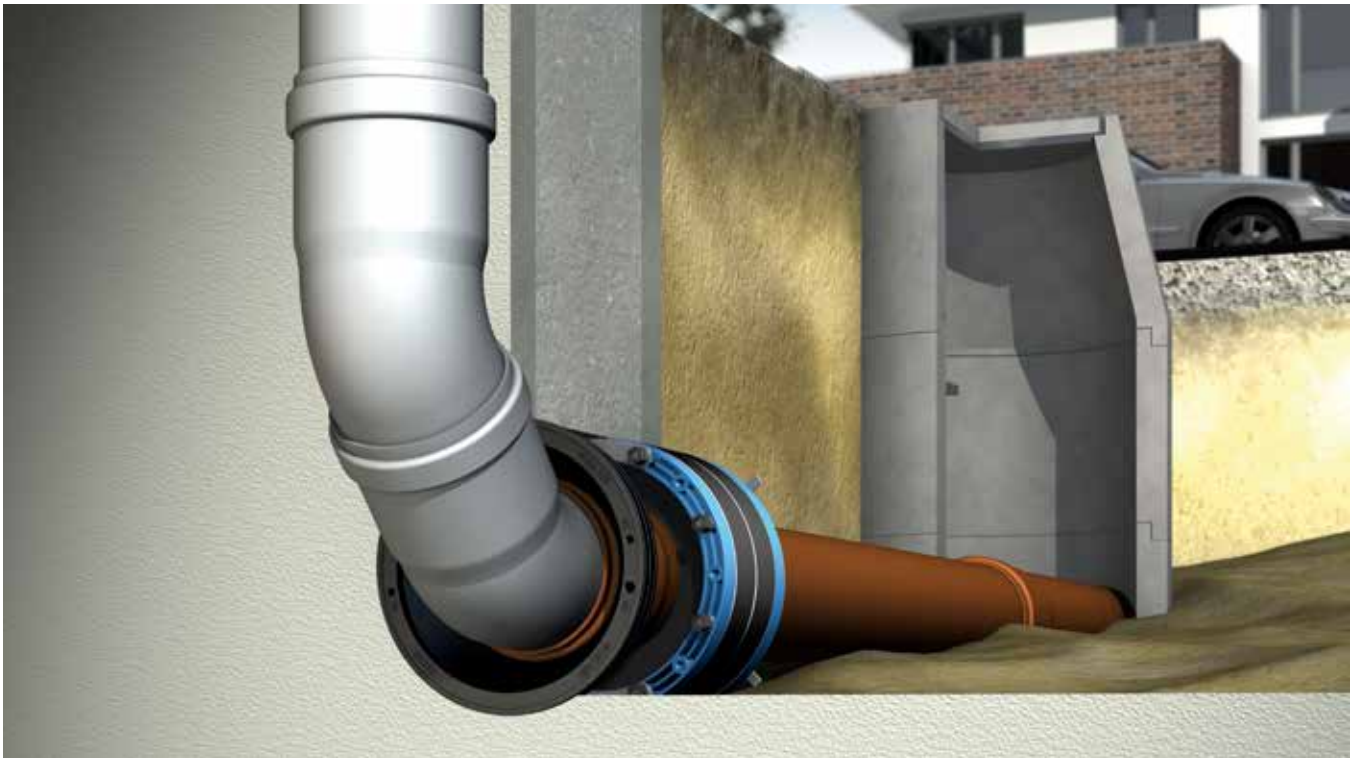


FOR BUILDINGS WITH BASEMENTS

Curaflex® building owner's disposal package

Excellent for the wall:

Curaflex Nova® Uno/wide and Curaflex® ring closure RRV



APPLICATION

The Curaflex® building owner's disposal package is used **to seal the disposal pipes in waterproof concrete core bores** (white tank) **or on-site casings** (black tank). The wide rubber seal makes it suitable **for twin/element walls as well** (white tank). With the Curaflex® ring closure RRV, the core bore can be cleanly sealed on the basement side.

PRODUCT ADVANTAGES

- With ITL system for optimal contact pressure – can also be installed with a cordless screwdriver
- Easy assembly thanks to precise dimensions
- Permanently sealed – no need to re-tension later (maintenance-free)
- Greater sealing performance of the gasket insert thanks to DOYMA-Grip
- Wide rubber seal covers prefabricated concrete shell and core concrete
- Clear positioning thanks to fixing tabs (included in the scope of delivery)

COMPONENTS/SCOPE OF DELIVERY



RADON TIGHT
IAF GmbH

1x

Curaflex Nova® Uno/wide

For sealing the disposal pipes with an outer diameter of 110 mm in a core bore or casing measuring DN 200 (199–203 mm).



1x

Curaflex® ring closure RRV

For sealing the annulus space of the disposal pipes with an outer diameter of 110 mm in a core bore or casing measuring DN 200 (199–203 mm).

Curaflex® building owner's disposal package	Article number
Set	1 88 9 110 200 4 0

G-MT-1-514

Subject to technical changes. Some illustrations include accessories.



GOES WITH:
Quadro-Secura® multi-compartment building owner's package

All inclusive **FOR BUILDINGS WITH BASEMENTS**

