

INSTALLATION DETAILS

HKD wall collar



HKD wall collar

Please note:

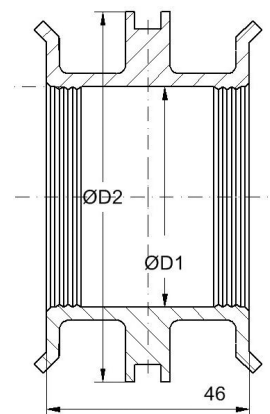
- Wall collars are sealing elements and do not serve as support bearings or fixed points for the duct.
- Check the matching assignment of the pipe and wall collar according to the table.
- To ensure secure sealing, the pipe must have a clean and smooth surface. Existing dirt should be removed with a cloth, deep grooves should be smoothed with a suitable tool.

Assembly

- Slide the wall collar onto the pipe to be set in concrete and position it in the middle of the concrete (at least 5 cm concrete cover recommended). Shift the wall collar with the force applied as evenly as possible all around.
- Tighten the two pre-assembled tension straps with a screwdriver or socket wrench until the wall collar fits tightly to the pipe. There, a deformation / constriction of the pipe should be avoided.
- Finally, make sure the wall collar and tension straps fit properly.

Dimension

Pipe Ø DN	Media pipe area Ø	Ø D1	Ø D2
100	108-115	108	142
125	123-130	123	157
150	158-165	158	192



DOYMA products are continuously being further developed. Technical changes will be performed without prior notice.

Further info at www.doyma.de

DOYMA GmbH & Co

SEALING SYSTEMS
FIRE PROTECTION SYSTEMS

Industriestr. 43-57
28876 Oyten

Phone: 0 42 07/91 66-300
Fax: 0 42 07/91 66-199

www.doyma.de
info@doyma.de