

# INSTALLATION INSTRUCTIONS

## HKD DOMO

- HKD DOMO-V
- HKD DOMO-VT



HKD DOMO-V



HKD DOMO-VT

### Intended use

The HKD DOMO-V and DOMO-VT gasket inserts are especially suitable for sealing pipes/cables with a smooth surface in standard dimensions.

The HKD DOMO-V models can be adjusted to the diameter of the pipe or cable.

The gaskets can be installed in waterproof concrete core bores and on-site casings.

HKD DOMO-VT: hinged version, for pipes that are already installed

### Please note

- Install gasket inserts as far as possible on the 'non-water side', using the clamping nuts.
- Gasket inserts are not secure points or support bearings; they are only used for elastic sealing of pipes/cables.
- Before installation, clean the core bore/casing and pipe/cable carefully. Smooth out uneven points in the surface. We also recommend sealing the core bore with Aquagard concrete primer and special paint, especially in applications with pressing water.
- The relevant FHRK standard (minimum seal width) can be found on the product label.
- When installing the sealing system, the applicable accident prevention regulations, VDE rules, the applicable national health and safety regulations, and the rules and policies of your company must all be observed.
- The applicable national regulations governing the laying and filling of pipes and cables must be observed.

### Installation conditions

- Breakouts, cracks and/or cavities in waterproof concrete core bores should be smoothed in advance.
- Casings must be rigid enough to withstand the compressive forces from the gasket insert and must have a smooth, circular inner surface. If casings are damaged they must be tested in advance for usability.
- Sealing components for the media pipe/cable/cable conduit must be installed in a waterproof WR concrete core bore or a pre-installed casing.
- The conduit (cable or pipe) to be sealed must be cleaned in advance and must not have any axial depressions or elevations in or around the sealing area.
- Compress the substrate and pipe substructure well before laying the pipe/cable, so that no sinking is possible.
- In addition to the usual standard tool, you also need the following tools and equipment in order to properly install the gasket insert:

**Tools:**

- 1 torque spanner
- 1 extension
- 1 hexagon socket  
(for size, see installation steps)

**Equipment:**

- Lubricant
- Cleaning agent (solvent-free)
- Calliper gauge
- Cleaning cloth

### Installing the gasket insert

- Clean the core bore/casing and pipe/cable carefully. Smooth out uneven points in the surface and breakouts.
- Measure the pipe/cable diameter.
- Remove plugs or determine the appropriate number of blades to be removed for the pipe/cable diameter.

### Scope of delivery

- HKD DOMO gasket insert
- Installation notes

### Accessories (optional)

- Aquagard primer (Curaflex® 1710), 1 litre for 4.0 m<sup>2</sup>  
Article no. 1 99 0 710 000 0 0
- Aquagard primer (Curaflex® 1711), 1/3 litre for 1.5 m<sup>2</sup>  
Article no. 1 99 0 711 000 0 0
- Aquagard special paint (Curaflex® 1715), 1 litres for 3.5 m<sup>2</sup>  
Article no. 1 99 0 715 000 0 0
- Aquagard special paint (Curaflex® 1716), 1/3 litre for 1.0 m<sup>2</sup>  
Article no. 1 99 0 716 000 0 0

#### DOMO-V 100 | DN casing/core bore diameter 99–102 mm

Pipe/cable diameter (mm):	none (plugged)	18–19	20–24	25–29	30–34	35–39	40–44	45–49	50–54	55–59	60–65
Number of fins to remove:	Plug not removed	Plug removed	1	2	3	4	5	6	7	8	9

#### DOMO-VT 100 | DN casing/core bore diameter 99–102 mm

Pipe/cable diameter (mm):	none (plugged)	32	40	50	63
Number of fins to remove:	Plug not removed	Plug removed	1	2	3

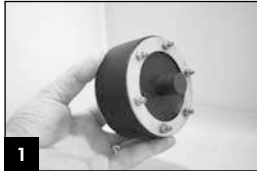
#### DOMO-V 150 | DN casing/core bore diameter 149–152 mm

Pipe/cable diameter (mm):	none (plugged)	62–63	75–77	88–90	108–110
Number of fins to remove:	Plug not removed	Plug removed	1	2	3

#### DOMO-V 200 | DN casing/core bore diameter 199–202 mm

Pipe/cable diameter (mm):	none (plugged)	108–110	123–125	133–135	158–160
Number of fins to remove:	Plug not removed	Plug removed	1	2	3

### Removing the plug with blades / adapting the modular sealing ring



1 Push out the plug from the modular sealing ring.



2 Bend up the innermost fin from the other fins using a tool (e.g. screwdriver).



3 Push the bent-up fin through to the other side.

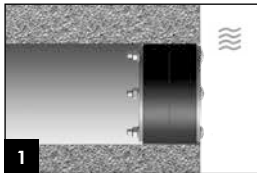


4 Carefully loosen the pushed-through fin from the other fins using a knife if necessary.

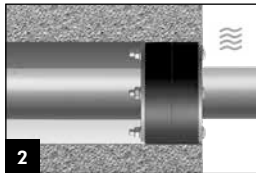


5 Pull out the fin after loosening it from the other fins.

### Installing the DOMO-V

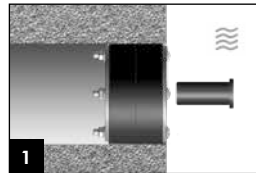


1 The clamping nuts of the gasket insert should face the 'non-water side'. Push the insert into the wall opening as far as possible until the insert is flush with the 'water side'.

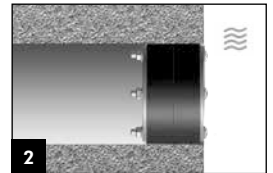


2 Push the pipe/cable into the gasket insert in the wall, or push the gasket insert over the pipe/cable and then insert everything together into the wall until flush. Tighten the nuts in multiple stages at the specified torque\* (see 'Torque' table), alternating between the nuts.

### Installing the plug seal

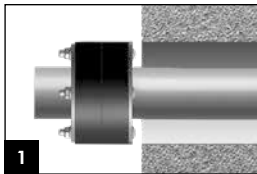


1 NOTE: When installed, the plug must be mounted on the 'water side' (applies to DN 150 and DN 200).

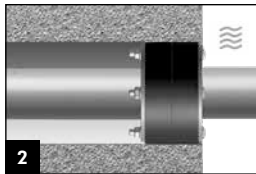


2 Push the gasket insert into the wall opening as far as possible until the insert is flush with the 'water side'. Tighten the nuts in multiple stages at the specified torque (see 'Torque' table), alternating between the nuts.

### Installing the DOMO-VT (split gasket insert)



1 Place the gasket insert around the pipe/cable.



2 Push the gasket insert into the wall opening as far as possible until the insert is flush with the 'water side'. Tighten the nuts in multiple stages at the specified torque\* (see 'Torque' table), alternating between the nuts.

### After installation

Visually inspect the installation to ensure that the gasket insert is touching the pipe and the core bore on all sides.

### Maximum torque

Bolt diameter	Width across flats	Maximum torque
M6	10	5 Nm

\* Reduced torque may be necessary for thin plastic pipes, in order to prevent damage to the pipe.



---

DOYMA products are constantly evolving. Technical changes may be implemented without notice.  
For more information, visit [www.doyma.de](http://www.doyma.de)

---

**DOYMA GmbH & Co**

SEALING SYSTEMS

FIRE PROTECTION SYSTEMS

Industriestr. 43-57  
28876 Oyten

Phone: 0 42 07/91 66-300  
Fax: 0 42 07/91 66-199

[www.doyma.de](http://www.doyma.de)  
[info@doyma.de](mailto:info@doyma.de)

