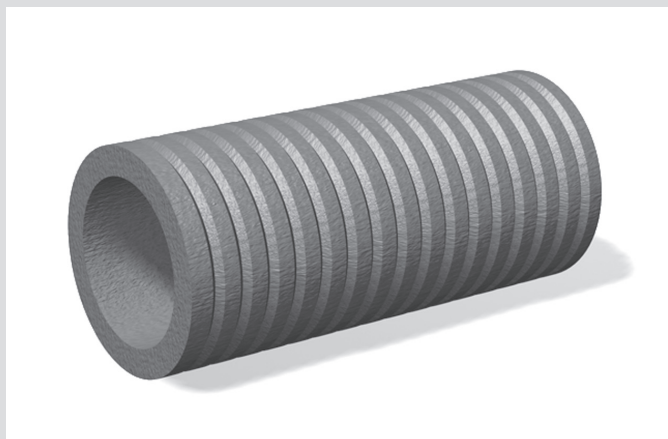


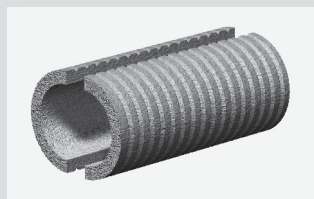
INSTALLATION INSTRUCTIONS

Curaflex® Pipe sleeves

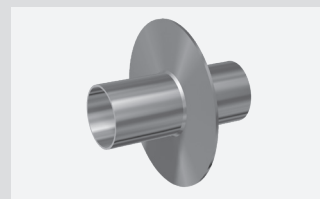
- Curaflex® 3000
- Curaflex® 3000/T
- Curaflex® 9000



Curaflex® 3000



Curaflex® 3000/T



Curaflex® 9000

Intended use

Special fibre cement pipe sleeve Curaflex® 3000, 3000/T or steel pipe sleeve Curaflex® 9000 for installation in walls, ceilings and floor slabs. Suitable for water-impermeable walls (white bath), such as impermeable concrete in pressing or non-pressing water. The pipe sleeve is used to accommodate a gasket insert (not included in the delivery).

Please note:

The machining instructions for the installation of the Curaflex® 3000, 3000/T pipe sleeve can be found on the following page. To seal the annular space between pipe/cable and pipe sleeve, you will need a sealing element. We recommend installing a Curaflex® gasket insert. Visual inspection of casings for defects or damage upon delivery and before installation.

ATTENTION: If a gasket insert is installed in a Curaflex® 3000 or 3000/T special fibre cement pipe sleeve that has not yet been concreted-in, it should only be pre-stressed slightly. The casings must be properly stored, secured so that they cannot roll away and protected against damage. There is a risk of damage to the pipe sleeve. Transport the casings using hoisting gear that allows for even lifting and lowering, with the aid of cables, straps, pipe grabs and similar. After the concreting-in, the gasket insert has to be tightened with the pre-defined torque. If the pipe has already been laid, then the pipe sleeve has to be positioned and fixed centrally around the pipe before concreting. When installing, place the pipe sleeves at a slight distance of at least 10 cm from each other during concreting if possible, so that concrete/mortar compaction can occur easily;

keep the distance of 10 cm from the pipe sleeve to the respective breakthrough limits even during installation in existing walls.

Scope of delivery

- Curaflex® Pipe sleeve
- Installation instructions

Tools

- Handheld hammer
- Compactor (e.g. internal vibrator)
- Manual or slow-running saw with dust catcher (only needed for cutting components to size)

Equipment

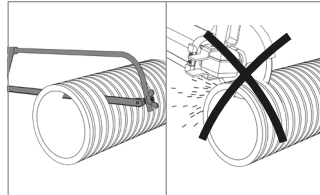
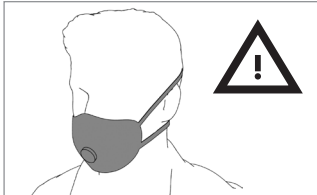
- Dust mask conforming to EN 149:2001 FFP 12360 (only needed for cutting components to size)
- Brush (for 3000/T only)
- Wedges (for 3000/T only)
- Scraper (for 3000/T only)
- Cleaning cloth

Accessories (optional)

Sikadur-31 concrete adhesive (Curaflex® 1740) for Curaflex® 3000/T
 Curaflex® 1701 pipe feed-through
 Curaflex® 1702 sealing plug
 Gasket insert: Curaflex® or Curaflex® Nova

Further accessories on request.

Processing notes



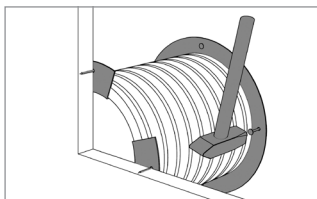
DOYMA supplies the Curaflex® special fibre cement pipe sleeve in any desired length so that no post-processing is required. In case of planning changes on site, which require processing of the special fibre cement pipe sleeve, **please observe the following instructions:**

- If possible, process the special fibre cement pipe sleeve outdoors or in well-ventilated rooms.
- Use only hand-operated or slow-running units with a dust collector device!
- Wear a dust protection mask according to EN 149: 2001 FFP 12360.
- Preferably moisten the special fibre cement pipe sleeve before cutting or drilling.
- For coated pipe sleeves, the uncoated face has to be applied after shortening to the side which is facing away from the water.

Installation steps

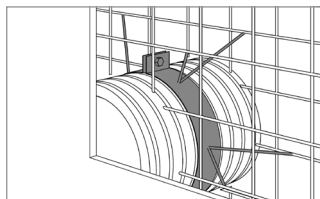
Curaflex® 3000

1 Pipe sleeve with auxiliary formwork



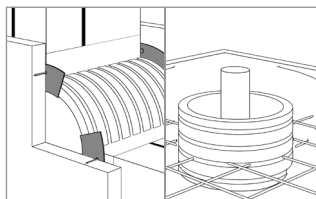
Affix the pipe sleeve during the shell construction phase with Curaflex® 1701 sealing plug (not included in the scope of delivery). 2 Auxiliary formworks are required per pipe sleeve.

2 Example of fixing in steel formwork



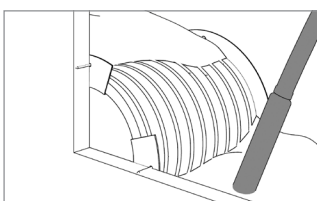
Example: Fixing in steel formwork by means of welded joints with pipe clamp (pipe clamp provided by the customer).

3 In brick walls, floor slabs, ceilings



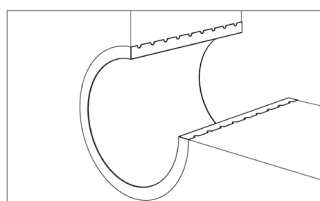
Walling in - such as in a brick wall (figure - left)
Pouring - such as in floor board/ceiling (figure - right)

4 Sealing



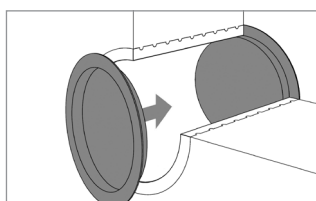
Seal the concrete in the pipe sleeve seam thoroughly.

5 Pipe sleeve with auxiliary formwork



Make sure that the pipe sleeve is flush with the formwork.

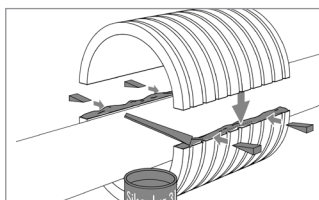
6 Pipe sleeve with sealing plug



Protect the pipe sleeve during the shell construction phase with Curaflex® 1702 sealing plug (not included in the scope of delivery).

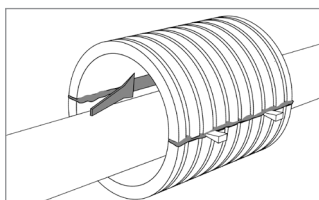
Sticking together Curaflex® 3000/T

1 Apply concrete adhesive



Apply concrete adhesive (not included in the scope of delivery). The distance between the halves of the pipe sleeve should be ca. 2 mm (use wooden wedges, for example).

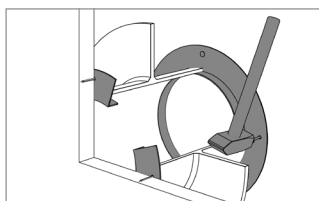
2 Spread the concrete adhesive evenly



Spread the concrete adhesive evenly so that the inner wall of the pipe sleeve forms a homogeneous sealing surface.

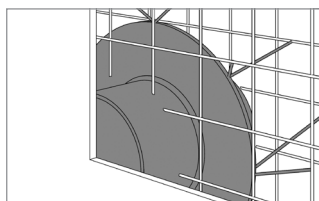
Curaflex® 9000

1 Pipe sleeve with auxiliary formwork



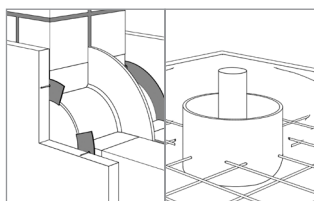
Affix the pipe sleeve during the shell construction phase with Curaflex® 1701 sealing plug (not included in the scope of delivery). 2 Auxiliary formworks are required per pipe sleeve.

2 Example of fixing in steel formwork



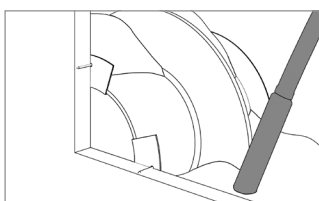
Example: Fixing in steel formwork by means of welded joints (provided by the customer).

3 In brick walls, floor slabs, ceilings



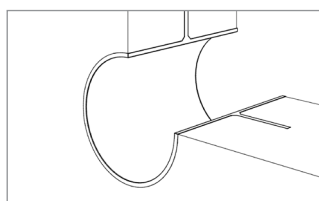
Walling in - such as in a brick wall (figure - left)
Pouring - such as in floor board/ceiling (figure - right)

4 Sealing



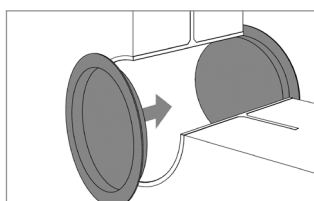
Seal the concrete in the pipe sleeve seam thoroughly.

5 Pipe sleeve with auxiliary formwork



Make sure that the pipe sleeve is flush with the formwork.

6 Pipe sleeve with sealing plug



Protect the pipe sleeve during the shell construction phase with Curaflex® 1702 sealing plug (not included in the scope of delivery).

DOYMA products are continuously being further developed. Technical changes will be performed without prior notice.
25 year warranty on all DOYMA products. **More information at www.doyma.de**

DOYMA GmbH & Co

SEALING SYSTEMS

FIRE PROTECTION SYSTEMS

Industriestr. 43-57
28876 Oyten

Phone: 0 42 07/91 66-300
Fax: 0 42 07/91 66-199

www.doyma.de
info@doyma.de

25
years
guarantee

