
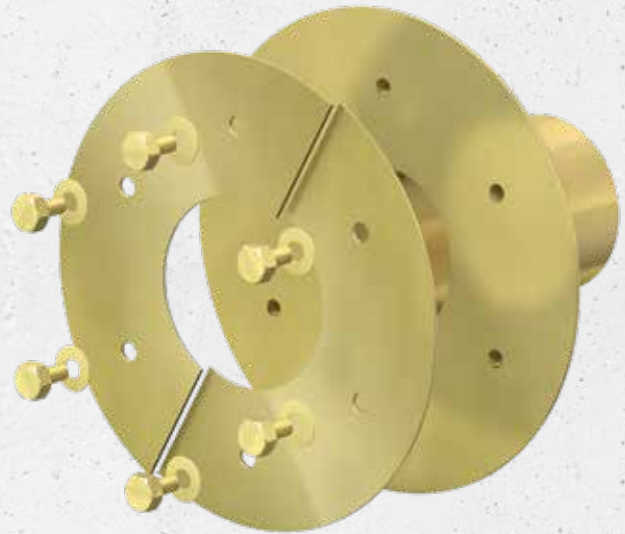


# Curaflex® 6000

 PRESSING WATER

- Cut-out for penetrations
- Use in unfinished structures
- For use with tanking membranes or thick coating (black tank)
- With fixed and loose flange
- For high static load capacity



25  
Years  
Guarantee

## PRODUCT ADVANTAGES

- Optimally designed inner wall for holding the DOYMA sealing systems and house lead-ins
- Steel pipe sleeve for high static loads with integrated fixed and loose flange (loose flange split)
- For flush mounting into the formwork

## TECHNICAL DETAILS

- With flanges in accordance with DIN 18195/DIN 18533
- Gas and water-tight
- Depending on the tanking membrane, installed with Curaflex® packings (1775) arranged on both sides where there is thin and hard film, or accessories where there is a thick coating (1776): sanding of the contact surfaces of the fixed/loose flange

## MATERIAL

- Steel, GGV triple corrosion protection coating; optionally made of stainless steel 1.4301 (V2A) or 1.4571/1.4404 (V4A)

Inner diameter of pipe sleeve $D_i$ [DN in mm]	Outer diameter of fixed flange $D_o$ max. [mm]	Standard lengths $L_i$ [mm]
80	440	
100	460	
125	480	
150	510	
200	560	200
250	610	240
300	660	250
350	710	300
400	760	350
450	810	365
500	860	400
600	960	
700	1060	

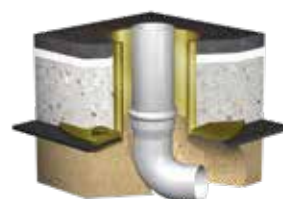
Further material combinations and dimensions available upon request.



### ACCESSORIES (OPTIONAL)\*

- Curaflex® packings (1775) for thin, hard films
- Accessories for thick coating
- Punch for thick coating

\* see corresponding section



Variant: Curaflex® 6000/U

