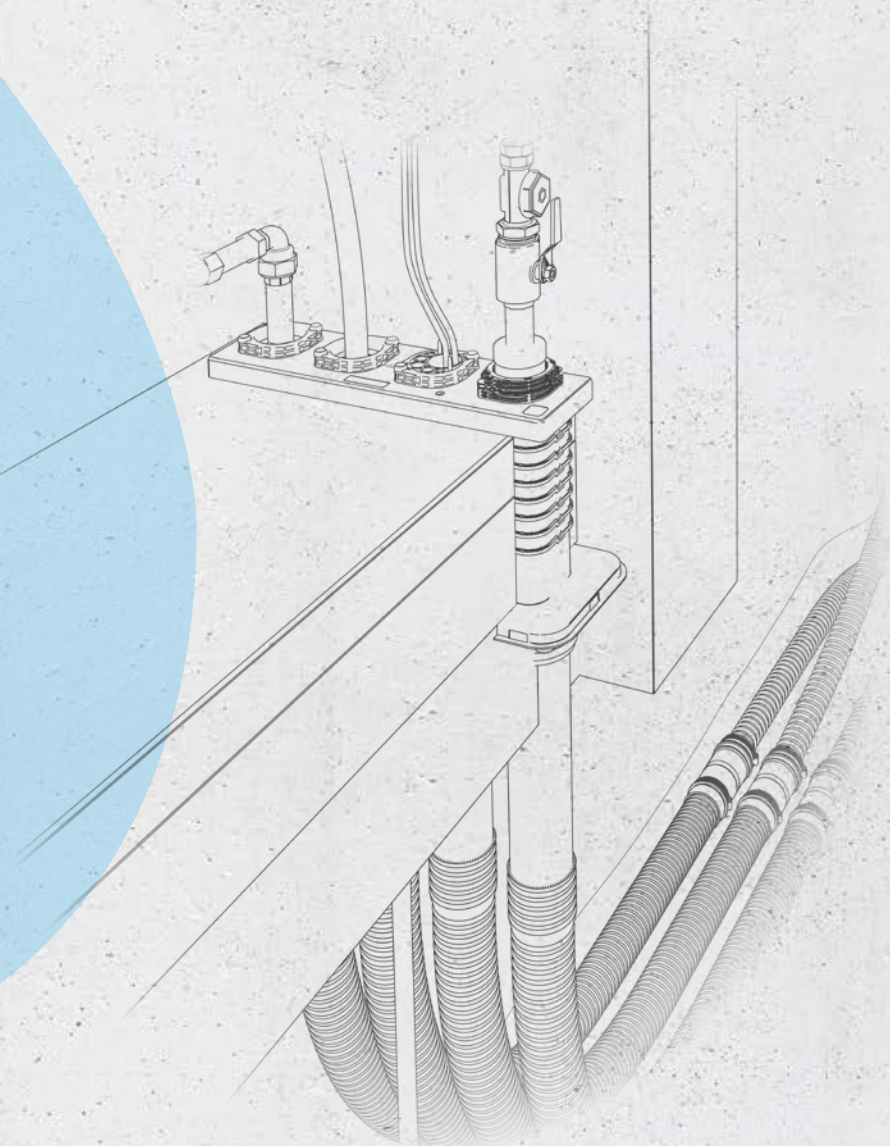


Quadro-Sicura®

CATALOGUE 2024

Valid from 1 January 2024



JUST SIMPLY SAFE.





Content

Building owner's package

Quadro-Secura® building owner's package - split-heat pump installation examples	6
Quadro-Secura® Building owner's package - supply lines installation examples	12
Quadro-Secura® building owner's package for supply lines Multi-compartment All inclusive for buildings without basements	16
Quadro-Secura® building owner's package Multi-compartment All inclusive for buildings with basements	20
Quadro-Secura® building owner's package Multi-compartment Eco for buildings without basements	22
Quadro-Secura® building owner's package Multi-compartment Eco for buildings with basements	23
Quadro-Secura® building owner's package Single-compartment for buildings without basements	24
Quadro-Secura® building owner's package Single-compartment Max for buildings without basements	26
Quadro-Secura® building owner's package Single-compartment for buildings with basements	28
Installation notes	30
Overview of water exposure	39
Technologies in detail	40
Effective protection against radon	41

House lead-ins

Quadro-Secura® Nova 1	42
Quadro-Secura® Nova 1/breit	43
Quadro-Secura® Nova 2	44
Quadro-Secura® Nova 2/breit	45
Quadro-Secura® Nova 1-M	46
Quadro-Secura® Nova 2-M	47
Quadro-Secura® Nova 1-FW	48
Quadro-Secura® Nova 2-FW	49
Quadro-Secura® E1	50
Quadro-Secura® E2	51

Quadro-Secura® E-S	52
Quadro-Secura® ADS for building with basements	53
Quadro-Secura® Quick/X	54
Quadro-Secura® Quick/G	56
Quadro-Secura® Quick/H	58
Quadro-Secura® Quick/O	59
Quadro-Secura® E-Quick	60
Quadro-Secura® MIS 40	62
Quadro-Secura® MIS 60D	63
Quadro-Secura® MIS 90	64
PLUS X AWARD	65
Quadro-Secura® Nova R4	66
Quadro-Secura® Nova R3	68
Quadro-Secura® Nova R2	70
Quadro-Secura® Nova R1	72
Quadro-Secura® E-BP/SRB	74
Quadro-Secura® E-BP-R Max	76
Quadro-Secura® ADS for buildings without basements	78
Quadro-Secura® SD	79
Quadro-Secura® MIS 40S	80
Quadro-Secura® MIS 60S	81
Quadro-Secura® MIS 90S	82

Accessories

Accessories for single and multi-compartment house lead-ins	83
---	----

House lead outs

Quadro-Secura® O.Con 1 for buildings without basements	88
Quadro-Secura® O.Con 2 for buildings without basements	90
Approvals, test reports, expert opinions	92
25-year warranty	93
Glossary	94
Terms and conditions for returns	95
General terms and conditions	96



MORE INFORMATION AND PRICES FOR OUR PRODUCTS CAN BE FOUND IN THE ADDITIONAL **PRODUCT RANGE PRICE LISTS** AND THE **BASIC PRINCIPLES OF SEALING AND FIRE CONTROL!**

Subject to technical changes. Prices specified in EUR/pc. not including statutory VAT. The specified prices are valid until new documentation is released. Prices may change due to price fluctuations. Errors, omissions, typos and price changes excepted.





SMART DOYMA PLATFORM

Every Curaflex Nova® product now has a QR code on it.
Scan this code before installing the product and get instant access to the SMART DOYMA PLATFORM – your mobile tool for:



INSTALLATION REPORT

Complete the installation report and get a 25-year warranty



YOUTUBE CHANNEL

Installation and product videos



INSTALLATION INSTRUCTIONS

Access the installation instructions directly



PRODUCT PAGE

Product details including data sheet and technical drawings



TEXT FOR TENDERS

Direct access to text for tenders



CONTACT

Direct contact with our consultants



WWW.AUSSCHREIBEN.DE

ALL DOYMA TEXT FOR TENDERS CAN BE FOUND ON THE FREE PLATFORM
FOR CONTRACTING AUTHORITIES (NO LOGIN REQUIRED).

YOUR BENEFITS

- Fast
- Convenient
- Structured
- Export to all common file formats such as GAEB, Word, Datnorm, PDF etc. (details on website)
- Data sheets
- Technical drawings



DOYMA INFORMATION TOOLS



DOYMA website:

Orientation and up-to-date information



YouTube:

Installation videos and product demonstrations



www.Ausschreiben.de:

All DOYMA text for tenders on a free platform



Facebook:

Product news, events and occasions

DOYMA NEWSLETTER

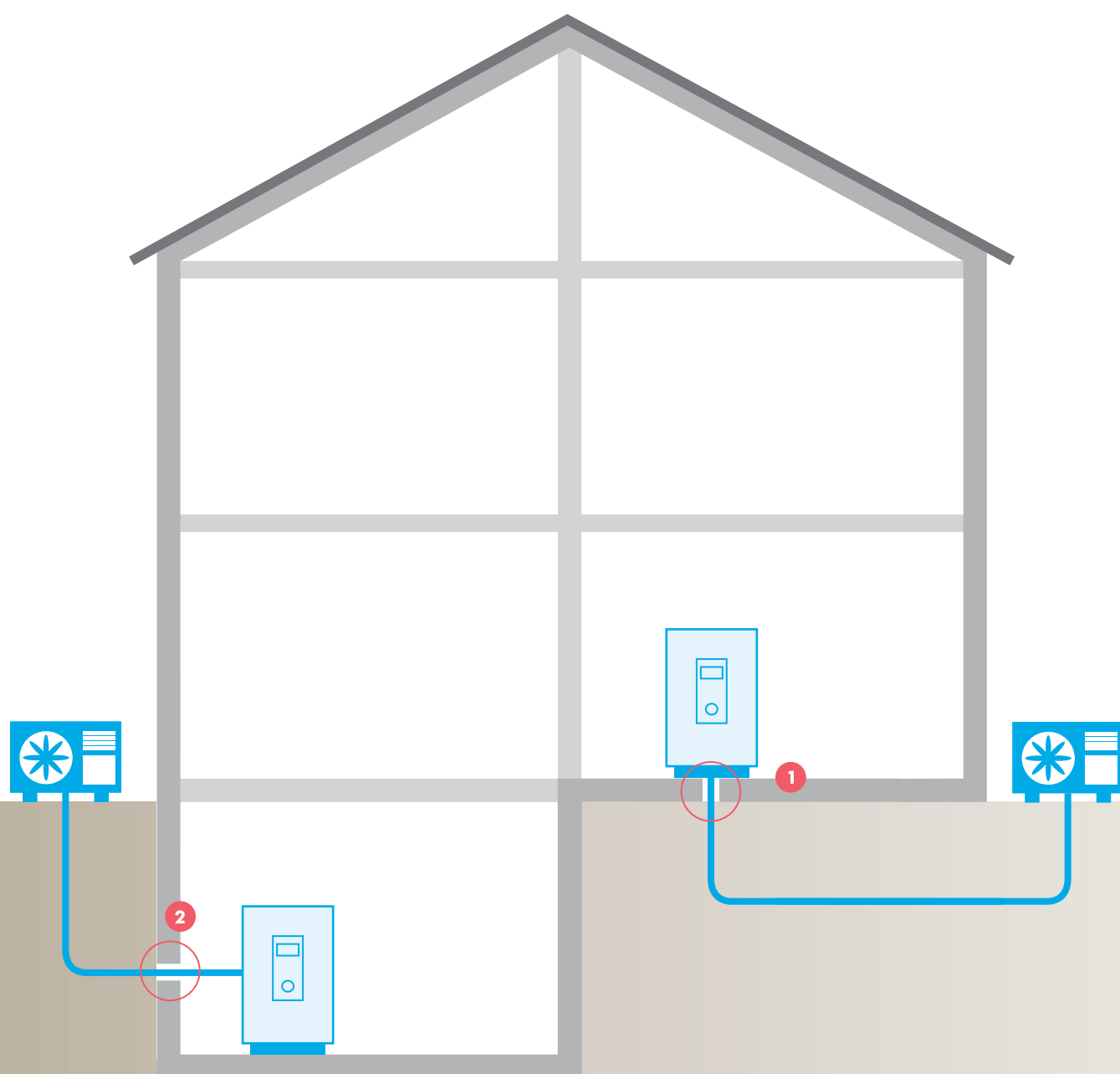
YOUR BENEFITS

- Get the latest news
- Find useful information from the world of sealing and fire control systems
- Gain a good understanding of complex technical subject matter
- Read articles with a strong focus on practical applications

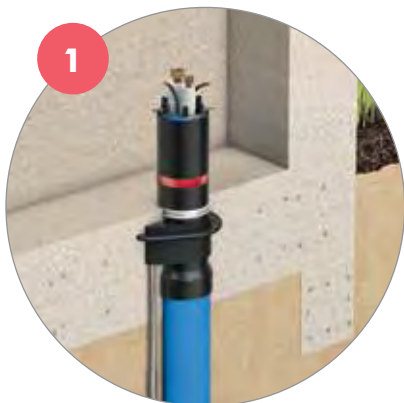


INSTALLATION EXAMPLES

Building owner's package for heat pump systems



Subject to technical changes. Some illustrations include accessories. R-MT-1-514-02/2024

FOR BUILDINGS WITHOUT BASEMENTS**AIR–WATER HEAT PUMP WITH SPLIT HEAT PUMP**

Quadro-Sicura® ADS DN 100
in combination with
Curaflex Nova® Uno/M/Z

FOR BUILDINGS WITH BASEMENTS**AIR–WATER HEAT PUMP WITH SPLIT HEAT PUMP**

Quadro-Sicura® Quick/H
in combination with
Curaflex Nova® Uno/M/Z



Quadro-Sicura® building owner's package

Split heat pump

FOR BUILDINGS WITHOUT BASEMENTS

The solution for refrigerant lines for split heat pumps!



APPLICATION

House-lead-ins for refrigerant lines
Use in unfinished floor slabs to be made of waterproof concrete (white tank)

PRODUCT ADVANTAGES

- Bend-resistant jacket pipe (inner diameter 110 mm/length 10 m) for compliance with bending radii
- Pipes and cables can be laid independently from construction progress
- Leak-tight against gas and pressing water
- Gasket insert is to be retrofitted around existing refrigerant lines
- With quick release for safe and secure closure

COMPONENTS/SCOPE OF DELIVERY



Quadro-Sicura® ADS DN 100

Cast-in part for embedding in the floor slab,
including bend-resistant jacket pipe
(inner diameter 110 mm/length 10 m)

25
years
guarantee



Curaflex Nova® Uno/M/Z

Gasket insert with replaceable onion ring
inserts
DN 100 for refrigerant lines and cables
Including fixing tabs for easy installation

25
years
guarantee



ACCESSORIES – OPTIONAL

- ITL nut set

Quadro-Sicura® building owner's package, split heat pump for buildings without basements	Outer diameter of cable [mm]	Outer diameter of pipe [inches]	Article number
Incl. 10 m bend-resistant jacket pipe	2 x 6-15	1/4 + 1/2	2040 100 028 91
Incl. 10 m bend-resistant jacket pipe	2 x 6-15	3/8 + 5/8	2040 100 027 91
Incl. 10 m bend-resistant jacket pipe	2 x 6-15	1/4 + 5/8	2040 100 029 91

Prices do not include fixtures and pipes/cables.

inch	Outer diameter
1/4	6,4 mm
1/2	12,7 mm
3/8	9,5 mm
5/8	15,9 mm

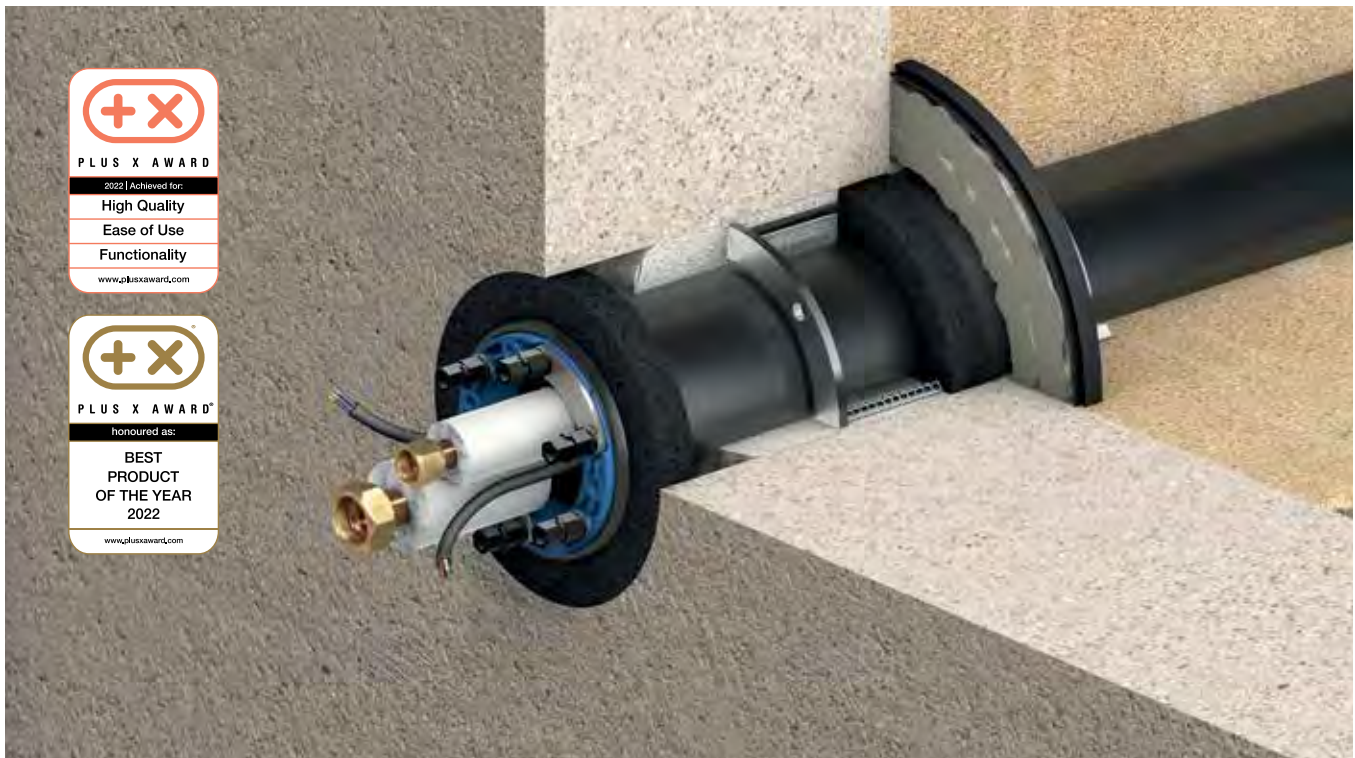


Quadro-Sicura® building owner's package

Split heat pump

FOR BUILDINGS WITH BASEMENTS

Perfect sealing of refrigerant lines for split heat pumps!



APPLICATION

House-lead-ins for refrigerant lines
Use in the most common wall types with sealing in accordance with DIN 18533 W2.1-E (black tank) and core bores in water-proof concrete (white tank)

PRODUCT ADVANTAGES

- Leak-tight against gas and pressing water
- Casing offers connection option for rigid or flexible jacket pipes/empty ducts with DN 110
- Ideal for sealing existing bitumen thick coatings
- Can even be used with conventional hollow bricks without filling
- Quick installation
- Suitable for installation in existing properties
- Gasket insert is to be retrofitted around existing refrigerant lines
- With quick release for safe and secure closure

COMPONENTS/SCOPE OF DELIVERY



Quadro-Secura® Quick/H

Building services duct system with injection system
Casing DN 100 for wall thicknesses from 200–600 mm



25 years
guarantee



Curaflex Nova® Uno/M/Z

Gasket insert with replaceable onion ring inserts
DN 100 for refrigerant lines and cables

25 years
guarantee



ACCESSORIES – OPTIONAL

- Fixing tabs
- ITL nut set

ACCESSORIES – NECESSARY

- 2K cartridge gun

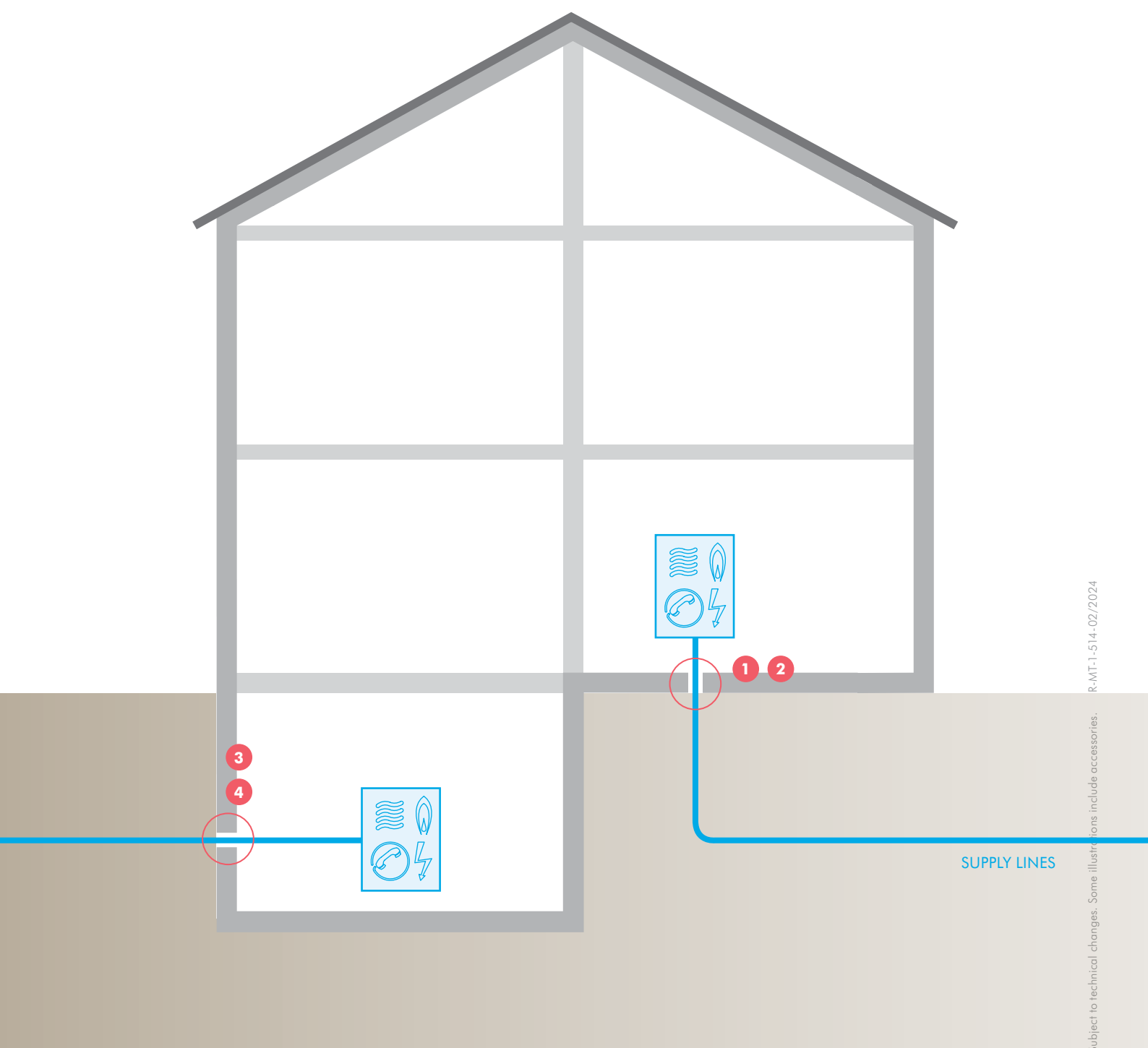
Quadro-Secura® building owner's package, split heat pump for buildings with basements	Outer diameter of cable [mm]	Outer diameter of pipe [inches]	Article number
	2 x 6-15	1/4 + 1/2	2630 110 028 90
	2 x 6-15	3/8 + 5/8	2630 110 027 90
	2 x 6-15	1/4 + 5/8	2630 110 029 90

Prices do not include fixtures and pipes/cables.

inch	Outer diameter
1/4	6,4 mm
1/2	12,7 mm
3/8	9,5 mm
5/8	15,9 mm

INSTALLATION EXAMPLES

building owner's package for supply lines



Subject to technical changes. Some illustrations include accessories. R-MT-1-514-02/2024

FOR BUILDINGS **WITHOUT BASEMENTS**

SUPPLY



MULTI-COMPARTMENT
Quadro-Sicura® Nova R4



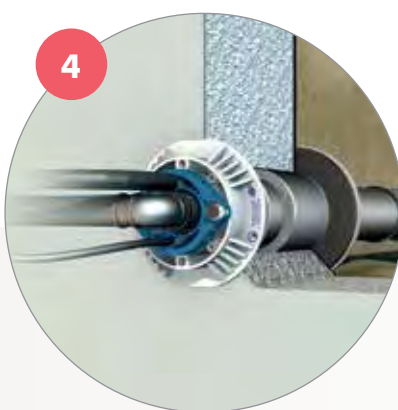
SINGLE-COMPARTMENT
Quadro-Sicura® Nova R1

FOR BUILDINGS **WITH BASEMENTS**

SUPPLY



MULTI-COMPARTMENT
Quadro-Sicura® Nova 1/breit



SINGLE-COMPARTMENT
Quadro-Sicura® E1/breit



SUPPLY LINES

Single and multi-compartment building services systems from DOYMA

The best solution for all buildings

More and more utility companies are shifting the responsibility for the professional sealing between the building lead-in and the building structure to the owners or property developers. However, it is often difficult to select products and stay in compliance with the various regulations.

Building owner's packages for supply lines

For this reason, DOYMA has worked with many utility companies to develop a standard that greatly simplifies the sometimes difficult task of selecting the right products and also covers most applications. With our specially tailored building owner's packages, you are always right where you need to be, saving valuable time so you can concentrate on other things instead.

Building owner's packages for heat pump systems

Heat pumps that take their energy from the environment have become the top choice for heat supply to new residential buildings. DOYMA has put together the perfect building owner packages for installing coolant lines for split system air–water heat pumps.

4 REASONS TO CHOOSE DOYMA!



CERTIFIED RADON-TIGHT



**TRUST IS GOOD.
HEALTH IS BETTER.**

- Comprehensive protection of health
- Safely tight in areas with high radon levels



PRE-ASSEMBLED PACKAGES



**ALL INCLUDED.
ALL ASSEMBLED.
EVERYONE'S HAPPY.**

- Suppliers can complete their work in time as all components are always at hand
- Packages guaranteed to be leak-tight at all times
- Packages can be installed side-by-side



25-YEAR WARRANTY

25
years
guarantee

**LEAK-TIGHT ALL
THE TIME.
GUARANTEED.**

- Service that goes far beyond statutory requirements
- High-quality, solid product
- High stability of all components



COMPONENTS CANNOT BE LOST



**NO SEARCHING.
PUT YOUR PRO IN
A GOOD MOOD.**

- All individual parts are complete and can be installed at any time
- No delays in installation
- Immediately ready-to-use components

EXAMPLES: NON-COMPLIANT EXECUTION

Sewer pipes are often not used as intended when pipes and cables are installed. Either there is no seal between the building structure and the pipe/cable or the seal is not permanent and therefore neither the state of the art nor the legal requirements are met.



EXAMPLES: COMPLIANT EXECUTION

A gas and watertight and therefore compliant seal can be achieved in buildings with and without basements easily, quickly and safely using DOYMA sealing systems.



GUIDELINES THAT YOU SHOULD KNOW!*

Here's what the regulations say (excerpts): building lead-ins for gas, water, electricity, telecommunications, district heating and disposal lines must be gas and water-tight! DIN 18012 applies as a basic planning guideline for all building services.

GAS AND WATER HOUSE LEAD-INS

according to DVGW G459-1 + DVGW W 400-1 + DVGW VP 601 + DVGW GW 390 (draft):

house lead-ins must be leak-tight against gas and pressing water

ELECTRICITY

DIN 18322, German construction contract procedures (VOB) Part C, General technical specifications in construction contracts (ATV) – Andergroand cable laying + VDE-AR-N 4223 (draft) + VDE-AR-N-4100:

Cable and pipe entries into buildings must be gas and water-tight.

TELECOMMUNICATIONS

DIN 18322, VOB Part C, ATV – Andergroand cable laying + VDE-AR-N 4223 (draft):

Cable and pipe entries into buildings must be gas and water-tight.

DISTRICT HEATING

AGFW FW 401 + AGFW FW 419 (draft):

House lead-ins must be sealed using appropriate systems; reference to DIN 18195

DISPOSAL

DIN 1986-100:

If lines are routed through the outer walls lying in the ground, these connections must be permanently sealed to be gas and water-tight.

BUILDING SEAL

DIN 18533 + DAfStb (German Committee for Reinforced Concrete) guideline - 'Wasserundurchlässige Bauwerke aus Beton' [Waterproof concrete structures] + WTA Recommendation 4-6-14/D:

Building duct systems must be connected using a gas and watertight sealing method.

* Standards and guidelines which must be observed may vary depending on the federal state and local building code.



Quadro-Sicura® building owner's package- Multi-compartment **All inclusive**

FOR BUILDINGS WITHOUT BASEMENTS

Everything's included, everything's assembled:
your all-round carefree solution!



APPLICATION

Multi-compartment house lead-in as a series version.
Use in unfinished structures to be made from waterproof concrete.

For the following building services: water, electricity and telecommunications. **Completely equipped with the required accessories.**

A required gas connection set can be reordered free of charge.

Improved installation properties AND visual inspection



Visual confirmation: top edge of casing clearly and visibly snaps into the holder (arrows)



Pipe sleeve pressure-tested at the plant – now with nominal/outer diameter 90 (inner diameter 78)

PRODUCT ADVANTAGES

- DVGW-approved products as per VP 601 (B1) Proper installation can be documented by the supplied installation protocol.
- With adhesive flange according to DIN 18533 for connection of waterproofing or radon foils on the floor slab
- all trades pre-fitted and pre-assembled with gas- and pressure-water-tight blanking plugs
- Certified leak-tightness for gas and pressing water in accordance with DIN 18322
- The sealing system is certified as 'radon-tight'
- Subsequent replacement of pipes possible (relining)
- Supply pipes can be laid independently from construction progress
- Bend-resistant jacket pipe for compliance with bending radii
- Jacket pipe systems pressure-tested at the plant (test seal)
- Sealing for disposal pipes included in package (four HKD wall collars)
- No on-site leak test in accordance with DVGW G459-1 required

COMPONENTS/SCOPE OF DELIVERY

1x

Quadro-Secura® Nova R4

Installation part including pre-assembled building service seals:

Water: outer diameter 32, 40, 50 mm

Electricity: outer diameter 25–53 mm

Telecom.: up to seven lines with 2 × 5–7 mm, 4 × 7–13 mm,
1 × 13–21 mm

Blind service seal: with optional occupancy

1x

Quadro-Secura® Nova R4-R

Cast-in part for embedding in the floor slab, including bend-resistant jacket pipes with nominal/outer diameter 90 (inner diameter 78) (lengths: 3 m, 6 m, 10 m, 15 m or 25 m).



1x

lubricant (2780)



4x

HKD wall collars DN 100

For sealing disposal pipes in concrete walls or floor slabs made of waterproof concrete



4x

jacket pipe end plugs (2704)

For sealing the jacket pipes and lines.



4x

connecting sleeve (2726)

For extending the bend-resistant jacket pipes.



25 years
guarantee

Quadro-Secura® Nova R4
consisting of:
Quadro-Secura® Nova R4-I (installation part)
and Quadro-Secura® Nova R4-R (cast in part)

Quadro-Secura® building owner's package Multi-compartment All inclusive for buildings without basements	Article number
Incl. 3 m bend-resistant jacket pipe	2758 000 090 93
Incl. 6 m bend-resistant jacket pipe	2758 000 090 96
Incl. 10 m bend-resistant jacket pipe	2758 000 090 91
Incl. 15 m bend-resistant jacket pipe	2758 000 090 95
inkl. 25 m bend-resistant jacket pipe	2758 000 090 92

Prices do not include fixtures and pipes.



Quadro-Secura® building owner's package- Multi-compartment **All inclusive** + CONNY

FOR BUILDINGS **WITHOUT BASEMENTS**

Everything's included, everything's assembled:
Your all-round solution for supplying your house and property!



APPLICATION

Complete package: Consisting of Multi-compartment house lead-ins as a series version in combination with the new DOYMA house version „CONNY“.

Use in unfinished structures made of waterproof concrete

Quadro-Secura® Nova R4: for the building services water, electricity and telecommunications. **Completely equipped with necessary accessories.**

Quadro-Secura® O.Con 1: For the later inclusion of supply lines for the property and garden

- Subsequent replacement of pipes possible (relining)
- Supply pipes can be laid independently from construction progress
- Universal sealing for all standard pipe diameters
- Jacket pipe systems pressure-tested at the plant (test seal)
- Sealing for disposal pipes included in package (four HKD wall collars)
- No on-site leak test in accordance with DVGW G459-1 required

PRODUCT ADVANTAGES HOUSE LEAD-IN

- DVGW-approved products as per VP 601 (B1) Proper installation can be documented by the supplied installation protocol.
- With adhesive flange according to DIN 18533 for connection of waterproofing or radon foils on the floor slab
- all trades pre-fitted and pre-assembled with gas- and pressure-water-tight blanking plugs
- Certified leak-tightness for gas and pressing water in accordance with DIN 18322

PRODUCT ADVANTAGES BUILDING SERVICES OUTLETS

- Later insertion of pipes for use in garden or outdoor areas.
- No drilling or the like required on the building for later laying of lines
- Various sealing options for different lines possible
- Quick installation

COMPONENTS/SCOPE OF DELIVERY

1x

Quadro-Sicura® Nova R4-I

Installation part including pre-assembled building service seals:

Water: outer diameter 32, 40, 50 mm

Electricity: outer diameter 25 – 53 mm

Telecom.: up to seven lines with 2 × 5 – 7 mm, 4 × 7 – 13 mm,
1 × 13 – 21 mm

Blind service seal: with optional occupancy

1x

Quadro-Sicura® Nova R4-R

Cast-in part for embedding in the floor slab, including bend-resistant jacket pipes with nominal/outer diameter 90 (inner diameter 78) (lengths: 3 m).



1x

lubricant (2780)



4x

HKD wall collars DN 100

For sealing disposal pipes in concrete walls or floor slabs made of waterproof concrete



4x

jacket pipe end plugs (2704)

For sealing the jacket pipes and lines.



4x

connecting sleeve (2726)

For extending the bend-resistant jacket pipes.



1x

O.Con 1



4x

jacket pipe DN 75 (2775)

Flexible (length: 10 m)



25 years
guarantee

Quadro-Sicura® Nova R4
consisting of:
Quadro-Sicura® Nova R4-I (installation part)
and Quadro-Sicura® Nova R4-R (cast in part)

Quadro-Sicura® building owner's
package Multi-compartment
All inclusive + CONNY
for buildings without basements

Article number

complete package

2758 101 090 9 3

Prices do not include fixtures and pipes.



Quadro-Sicura® building owner's package- Multi-compartment **All inclusive**

FOR BUILDINGS WITH BASEMENTS

Everything's included, everything's assembled: your all-round carefree solution!



APPLICATION

Multi-compartment house lead-in with sealing on both sides. Additional seal flange on the outside wall in accordance with DIN 18533 for sealing tanking membranes (black tank). Installation in pre-installed pipe sleeve or core bore in water-proof concrete (white tank). Also suitable for twin/element walls!

For the following building services: gas, water, electricity and telecommunications.

Completely equipped with the required accessories.

A required gas connection set can be reordered free of charge.

PRODUCT ADVANTAGES

- DVGW-approved products as per VP 601 (B1)
- All building services are pre-assembled and given dummy plugs that are leak-tight against gas and pressing water
- Certified leak-tightness for gas and pressing water in accordance with DIN 18322
- The sealing system is certified as 'radon-tight'
- Compact and space-saving installation of building and mains connections and associated fittings
- Flexible assignment of individual compartments possible
- Subsequent replacement of pipes possible (relining)*
- Supply pipes can be laid independently from construction progress*
- Universal sealing for all standard pipe diameters
- Outer sealing with ITL system for optimal contact pressure

* when connecting jacket pipes; optional accessories

COMPONENTS/SCOPE OF DELIVERY

1x

Quadro-Secura® Nova 1/breit

Including pre-assembled building service seals:

Water: outer diameter 32, 40, 50 mm

Electricity: outer diameter 25–53 mm

Telecom.: up to seven lines with 2 x 5 – 7 mm,
4 x 7 – 13 mm, 1 x 13 – 21 mm

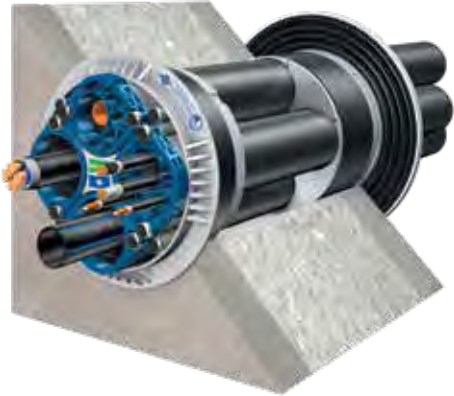
Blind service seal: with optional occupancy

Core bore/pipe sleeve diameter: 199 – 203 mm

Wall thickness: 190 – 550 mm



25 years
guarantee



Quadro-Secura® Nova 1/breit
With breit outer seal



1x

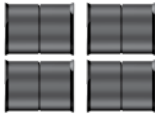
lubricant (2780)



4x

jacket pipe end plugs ((2704)

For sealing the jacket pipes and lines.



4x

double sleeves (2707)

For connecting and extending the
cable protection pipes (2775). Not
suitable for bend-resistant jacket
pipes.



Quadro-Secura® building owner's package
Multi-compartment
All inclusive for buildings with basements

Article number

2418 001 000 94

Prices do not include fixtures and pipes.





Quadro-Sicura® building owner's package- Multi-compartment Eco

FOR BUILDINGS WITHOUT BASEMENTS

The series version: Quadro-Sicura® Nova R4

APPLICATION

Multi-compartment house lead-in as a series version.
Use in unfinished structures to be made from waterproof concrete.
For the following building services: water, electricity and telecommunications. The package includes the building service seals, which are to be installed on site.

PRODUCT ADVANTAGES

- DVGW-approved products as per VP 601 (B1)
- With bonding flange in accordance with DIN 18533 for connecting waterproofing or radon foils on the floor slab
- The Eco version can be individually extended using available accessories
- No on-site leak test in accordance with DVGW G459-1 required

COMPONENTS/SCOPE OF DELIVERY

1x Quadro-Sicura® Nova R4-I

Installation part including building service seals (not pre-assembled):

Water: outer diameter 32, 40, 50 mm

Electricity: outer diameter 25 – 53 mm

Telecom.: up to seven lines with 2 x 5 – 7 mm,
4 x 7 – 13 mm, 1 x 13 – 21 mm

Blind service seal



Quadro-Sicura® Nova R4
consisting of:
Nova R4-I (installation part) and
Nova R4-R (cast-in part)



25 years
guarantee

1x Quadro-Sicura® Nova R4-R

Cast-in part for embedding in the floor slab, including bend-resistant jacket pipes with nominal/outer diameter 90 (inner diameter 78) (lengths: 3 m, 6 m, 10 m, 15 or 25 m).



4x jacket pipe end plugs (2704)

For sealing the jacket pipes and lines.



3x building service seals

For sealing the pipes.

Extension accessories	Article number
Connecting sleeves (4 pcs)	2990 726 090 40
HKD wall collars (1 pcs)	8180 110 000 20
Lubricant (tube) 30 ml	2990 780 030 00

Quadro-Sicura® building owner's package Multi-compartment Eco for buildings without basements	Article number
Incl. 3 m bend-resistant jacket pipe	2256 001 090 93
Incl. 6 m bend-resistant jacket pipe	2256 001 090 96
Incl. 10 m bend-resistant jacket pipe	2256 001 090 91
Incl. 15 m bend-resistant jacket pipe	2256 001 090 95
Incl. 25 m bend-resistant jacket pipe	2256 001 090 92



Quadro-Secura® building owner's package- Multi-compartment Eco

FOR BUILDINGS WITH BASEMENTS

The space-saving solution: Quadro-Secura® Nova 1/breit

APPLICATION

Multi-compartment house lead-in with sealing on both sides. Additional seal flange on the outside wall in accordance with DIN 18533 for sealing tanking membranes (black tank). Use in on-site pipe sleeve or waterproof core bore (white tank). Also suitable for twin/element walls. The package includes the building service seals, which are to be installed on site.

PRODUCT ADVANTAGES

- DVGW-approved products as per VP 601 (B1)
- The Eco version can be individually extended using available accessories

COMPONENTS/SCOPE OF DELIVERY

1x Quadro-Secura® Nova 1/breit

Including building service seals (not pre-assembled):

Wasser: outer diameter 32, 40, 50 mm

Strom: outer diameter 25 – 53 mm

Telecom.: up to seven lines with 2 x 5 – 7 mm,
4 x 7 – 13 mm, 1 x 13 – 21 mm

Blind service seal

Core bore/pipe sleeve diameter: 199 – 203 mm

Wall thickness: 190 – 550 mm



25 years
guarantee



Quadro-Secura® Nova 1
With breit outer seal



4x jacket pipe end plugs (2704)

für die Abdichtung der
Mantelrohre und Leitungen.



3x building service seals

For sealing the pipes.

Extension accessories	Article number
Double sleeves (4 pcs)	2990 707 075 40
Lubricant (tube) 30 ml	2990 780 030 00

Quadro-Secura® building owner's package Multi-compartment Eco for buildings with basements	Article number
	2416 001 000 94



Quadro-Secura® building owner's package- Single-compartment

FOR BUILDINGS WITHOUT BASEMENTS

The roand house lead-in: Quadro-Secura® Nova R1



APPLICATION

Single-compartment house lead-in.
Use in unfinished structures to be made from waterproof concrete.

For the following building services: water, electricity and telecommunication.

Completely equipped with the required accessories.

PRODUCT ADVANTAGES

- DVGW-approved products as per VP 601 (B1)
- with bonding flange in accordance with DIN 18533 for connecting waterproofing or radon foils on the floor slab
- All building services are pre-assembled and given dummy plugs that are leak-tight against gas and pressing water
- Certified leak-tight against gas and pressing water in accordance with DIN 18322
- The sealing system is certified as 'radon-tight'
- Subsequent replacement of pipes possible (relining)
- Pipes can be laid independently from construction progress
- Universal sealing for all standard pipe diameters
- Can be used for all standard flexible gas house lead-in combinations/sealing for RMA and Schuck version 1 lead-ins included in package (Burger possible on request)
- Bend-resistant jacket pipe with nominal/outer diameter 90 (inner diameter 78) for compliance with bending radii
- Jacket pipe systems pressure-tested at the plant (test seal)
- No on-site leak test in accordance with DVGW G459-1 required

COMPONENTS/SCOPE OF DELIVERY

1x

Quadro-Sicura® Nova R1-R

Cast-in part for embedding in the floor slab, including bend-resistant jacket pipe with nominal/outer diameter 90 (inner diameter 78) (lengths: 3 m, 6 m, 10 m, 15 oder 25 m)



25 years guarantee



1x

connecting sleeve (2726)

For extending the bend-resistant jacket pipes.



1x

Gleitmittel (2780)



VERSION 1:
gas (RMA + SCHUCK)

1x

Quadro-Sicura® Nova R1-I

Including pre-assembled building service seal

Gas: DN 25 RMA and Schuck gas house lead-ins



25 years guarantee



1x

gas ring plug

For preventing ingress of sand. Gas-permeable.



1x

Schuck extension set

For the gas house lead-in (RMA already pre-assembled).



VERSION 2:
water, electricity, telecommunications

1x

Quadro-Sicura® Nova R1-I

Including pre-assembled building service seal

Water or electricity: outer diameter 23 – 40 mm

Telecom.: up to five lines with
2 x 5 – 7 mm,
2 x 7 – 13 mm,
1 x 12 – 16 mm



25 years guarantee



1x

jacket pipe end plugs (2704)

For sealing the jacket pipes and lines.



Quadro-Sicura® building owner's package Single-compartment for buildings without basements	Article number
Incl. 3 m bend-resistant jacket pipe	2858 090 000 93
Incl. 6 m bend-resistant jacket pipe	2858 090 000 96
Incl. 10 m bend-resistant jacket pipe	2858 090 000 91
Incl. 15 m bend-resistant jacket pipe	2858 090 000 95
Incl. 25 m bend-resistant jacket pipe	2858 090 000 92

Quadro-Sicura® building owner's package Single-compartment for buildings without basements	Article number
Incl. 3 m bend-resistant jacket pipe	2850 090 025 93
Incl. 6 m bend-resistant jacket pipe	2850 090 025 96
Incl. 10 m bend-resistant jacket pipe	2850 090 025 91
Incl. 15 m bend-resistant jacket pipe	2850 090 025 95
Incl. 25 m bend-resistant jacket pipe	2850 090 025 92

Prices do not include fixtures and pipes.



Quadro-Sicura® building owner's package- Single-compartment Max

FOR BUILDINGS **WITHOUT BASEMENTS**

Quadro-Sicura® single-compartment Max



APPLICATION

Single-compartment house lead-in as a roand version.
Use in unfinished structures to be made from waterproof concrete.
Designed for larger pipe/cable dimensions (including water or electricity).

PRODUCT ADVANTAGES

- Bend-resistant jacket pipe (inner diameter 100 mm, length 10 m) for compliance with bending radii
- Pipes can be laid independently from construction progress
- Subsequent replacement of pipes possible (relining)
- The Curaflex Nova® Multi gasket insert allows for variable sealing of pipes and cables with diameters from 20 to 63 mm. Plug-in modules make adjustment without tools possible. The specially developed ITL nuts ensure that the required torque is met.

COMPONENTS/SCOPE OF DELIVERY



Quadro-Secura® ADS DN 100

Cast-in part for embedding in the floor slab, including bend-resistant jacket pipe (inner diameter 110 mm, length 10 m) and end plug for sealing the jacket pipe in the ground.

25 years
guarantee



Curaflex Nova® Multi DN 100

Gasket insert for flexible sealing of pipes and cables with outer diameters from 20 to 63 mm. Plug-in modules for adjustment without tools. Four fixing tabs including stainless steel screws.



25 years
guarantee



Quadro-Secura® building owner's package Single-compartment for buildings without basements	Article number
Incl. 10 m bend-resistant jacket pipe	2080 100 026 11

Prices do not include fixtures and pipes.



Quadro-Secura® building owner's package- Single-compartment

FOR BUILDINGS WITH BASEMENTS

Sealing on both sides: Quadro-Secura® E1/breit



Quadro-Secura® E1/breit for gas



Quadro-Secura® E1/breit for water and telecommunications

APPLICATION

Single-compartment house lead-in with sealing on both sides. Additional seal flange on the outside wall in accordance with DIN 18533 for sealing tanking membranes (black tank). Also suitable for waterproof concrete core bores and twin/element walls!

For the following building services: gas, water, electricity and telecommunications. **Completely equipped with the required accessories.**

PRODUCT ADVANTAGES

- DVGW-approved products as per VP 601 (B1)
- Building service is pre-assembled and given dummy plugs that are leak-tight against gas and pressing water
- Certified leak-tight against gas and pressing water in accordance with DIN 18322
- The sealing system is certified as 'radon-tight'
- Subsequent replacement of pipes possible (relining)*
- Pipes can be laid independently from construction progress*
- Universal sealing for all standard pipe diameters
- Can be used for all standard flexible gas house lead-in combinations/sealing for RMA and Schuck version 1 lead-ins included in package (Burger possible on request)
- Optional sealing in accordance with DIN 18195/DIN 18533 possible

* when connecting jacket pipes; optional accessories

COMPONENTS/SCOPE OF DELIVERY

VERSION 1:
gas (RMA + SCHUCK)

1x Quadro-Secura® E1/breit
Including pre-assembled building service seal
Gas: DN 25 RMA and Schuck gas house lead-ins
Core bore/pipe sleeve diameter: 99 – 103 mm
Wall thickness: 160 – 550 mm

RADON TIGHT

IAF GmbH

25 years guarantee

1x Doppelsteckmuffe (2707)
For connecting and extending cable protection pipes.

1x gas ring plug
For preventing ingress of sand.
Gas-permeable.

1x Schuck extension set
For the gas house lead-in
(RMA already pre-assembled).

VERSION 2:
water, electricity, telecommunications

1x Quadro-Secura® E1/breit
Including pre-assembled building service seal
Water or electricity: outer diameter 23 – 40 mm
Telecom.: up to five lines with 2 x 5 – 7 mm,
2 x 7 – 13 mm, 1 x 12 – 16 mm
Core bore/pipe sleeve diameter: 99 – 103 mm
Wall thickness 160 – 550 mm

RADON TIGHT

IAF GmbH

25 years guarantee

1x double sleeves (2707)
For connecting and extending cable protection pipes.

1x Doppelsteckmuffe (2704)
For sealing the jacket pipes
and lines.

Quadro-Secura® single-compartment building owner's package for buildings with basements	Article number
Version Gas (RMA + Schuck)	2818 000 000 92

Quadro-Secura® single-compartment building owner's package for buildings with basements	Article number
Version Water or electricity and telecom.	2810 000 025 92

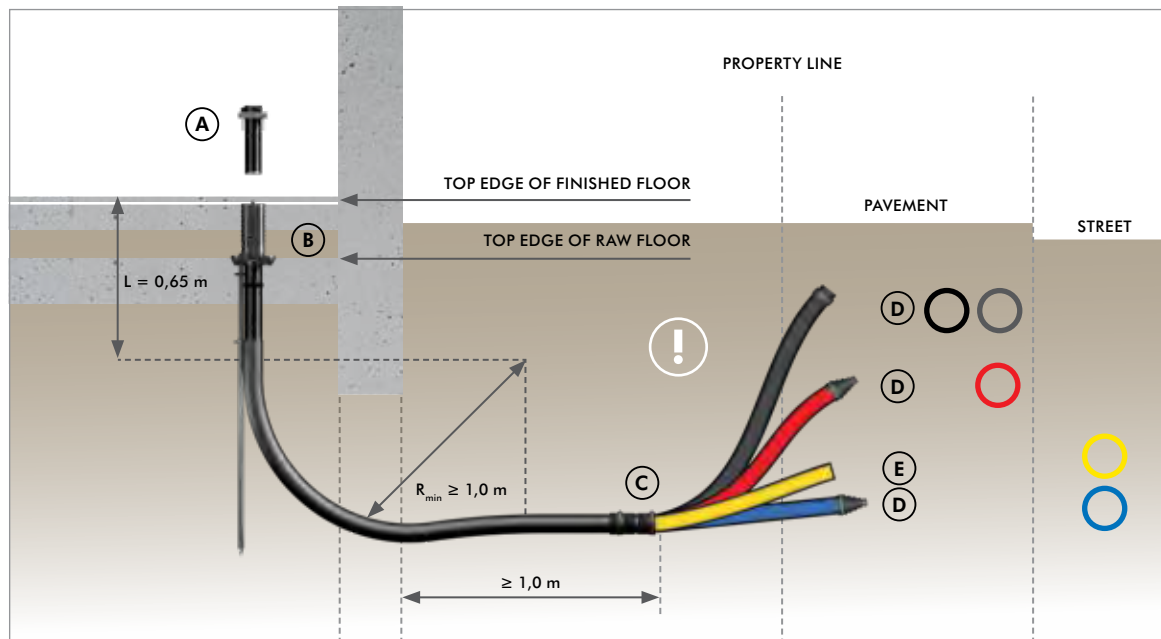
Prices do not include fixtures and pipes.

Subject to technical changes. Some illustrations include accessories. R-MT-1-514-02/2024

INSTALLATION NOTES

FOR BUILDINGS **WITHOUT BASEMENTS**

Quadro-Secura® Nova R4



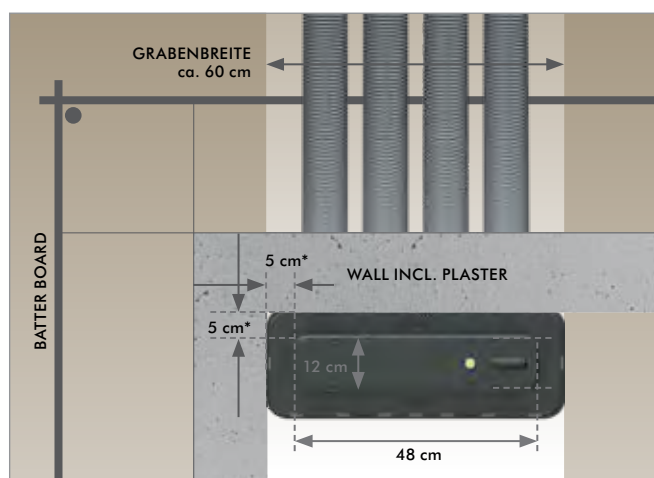
ATTENTION!

No inspection shafts, drainage pipes or other lines are permitted to be laid in the area of the building connection section.

It is technically feasible to extend the bend-resistant protective pipes, even under the floor slab. Nevertheless, please always consult your utility company on this matter.

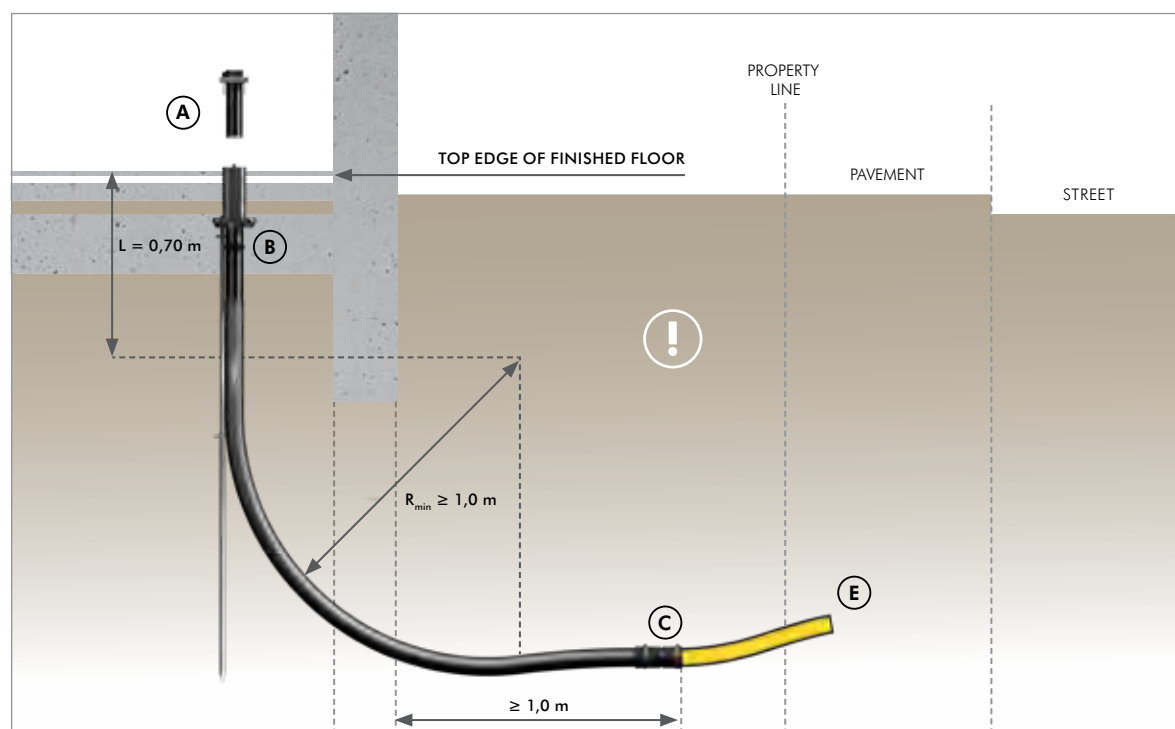
Installation part: Quadro-Secura® Nova R4-I/cast-in part: Quadro-Secura® Nova R4-R

Placement of the cast-in part





Quadro-Secura® Nova R1



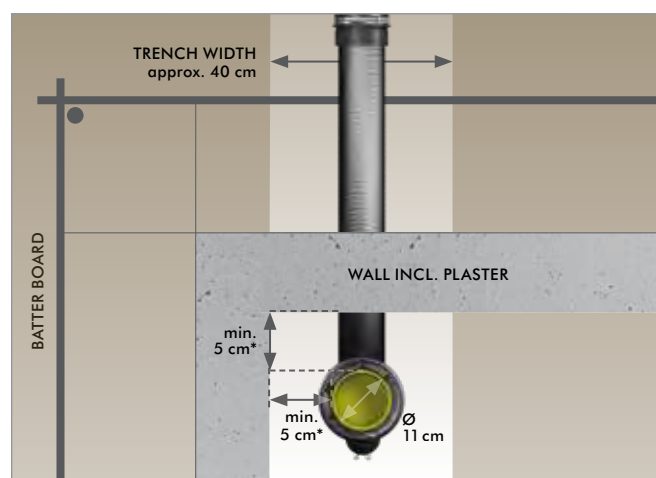
ATTENTION!

No inspection shafts, drainage pipes or other lines are permitted to be laid in the area of the building connection section.

It is technically feasible to extend the bend-resistant protective pipes, even under the floor slab. Nevertheless, please always consult your utility company on this matter.

Installation part: Quadro-Secura® Nova R1-I/ cast-in part: Quadro-Secura® Nova R1

Placement of the cast-in part



IMPORTANT!

The grid operators are responsible for establishing the respective building connections!

*Please determine the exact dimensions with your utility company.

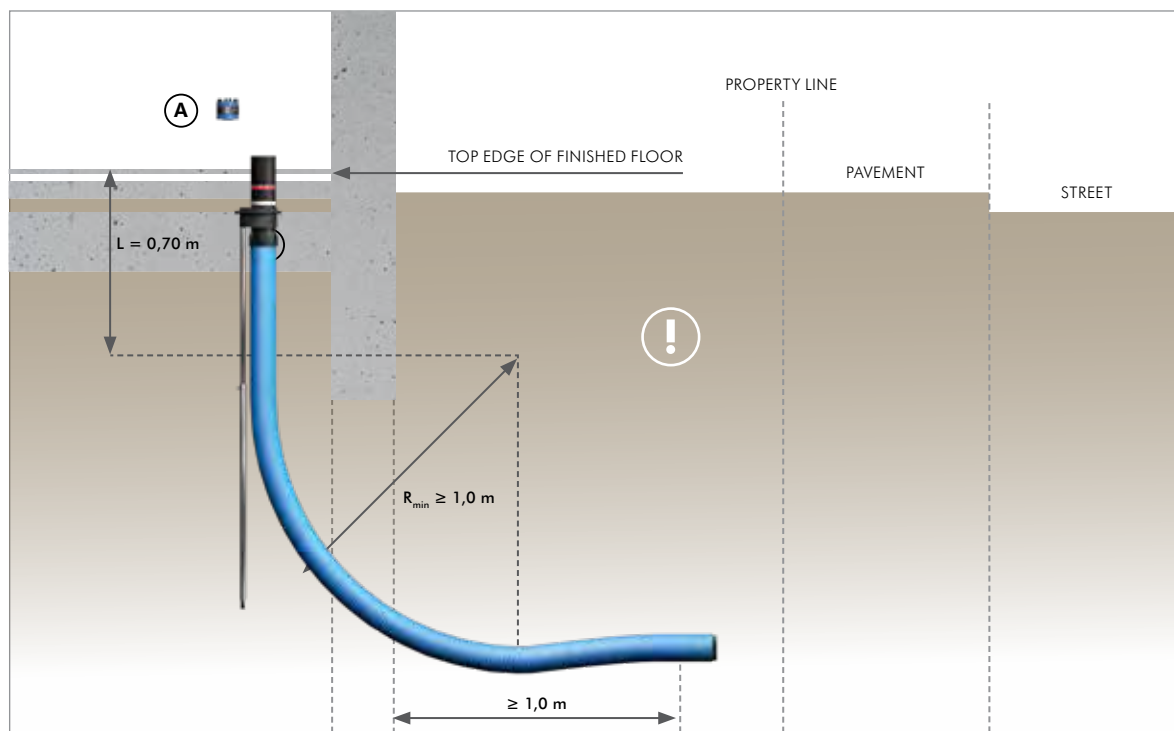
LEGEND

- | | |
|---------------|-------------------------|
| ○ TELECOM | Ⓐ INSTALLATION PART |
| ○ CABLE TV | Ⓑ CAST-IN PART |
| ○ ELECTRICITY | Ⓒ CONNECTING SLEEVES |
| ○ GAS | Ⓓ JACKET PIPE END PLUGS |
| ○ WATER | Ⓔ GAS RING PLUG |
| | Ⓕ DOUBLE SLEEVE |

INSTALLATION NOTES

FOR BUILDINGS WITHOUT BASEMENTS

Quadro-Sicura® building owner's package - Single-compartment Max

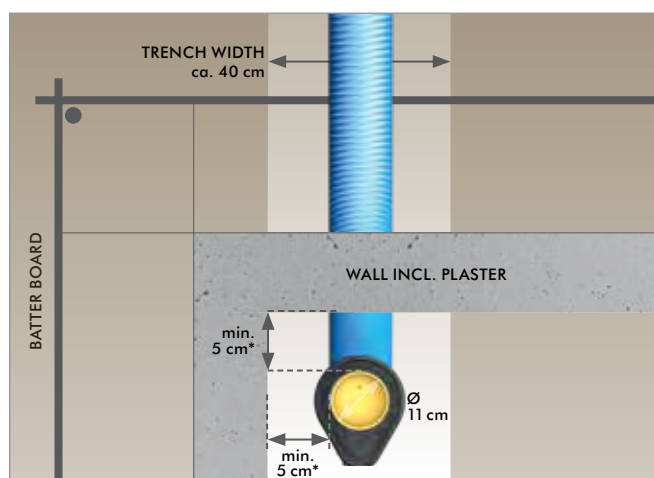


ATTENTION!

No inspection shafts, drainage pipes or other lines are permitted to be laid in the area of the building connection section.

It is technically feasible to extend the bend-resistant protective pipes, even under the floor slab. Nevertheless, please always consult your utility company on this matter.

Placement of the cast-in part



IMPORTANT!

The grid operators are responsible for establishing the respective building connections!

*Please determine the exact dimensions with your utility company.

LEGEND

- (A) GASKET INSERT
- (B) CAST-IN PART

DOYMA consulting

WE OFFER PROFESSIONAL, COMPREHENSIVE ADVICE

DOYMA ALWAYS HAS THE RIGHT CONTACT PERSON FOR YOU!

Not sure which product is right for you? Do you have general questions about the DOYMA product range or a special application? Our Technical Consulting team is happy to answer your questions at any time and provide you with comprehensive and competent advice.

CONTACT:

Product advice and customer service

Telefon: +49 (0) 4207/91 66-555

E-Mail: export@doyma.de

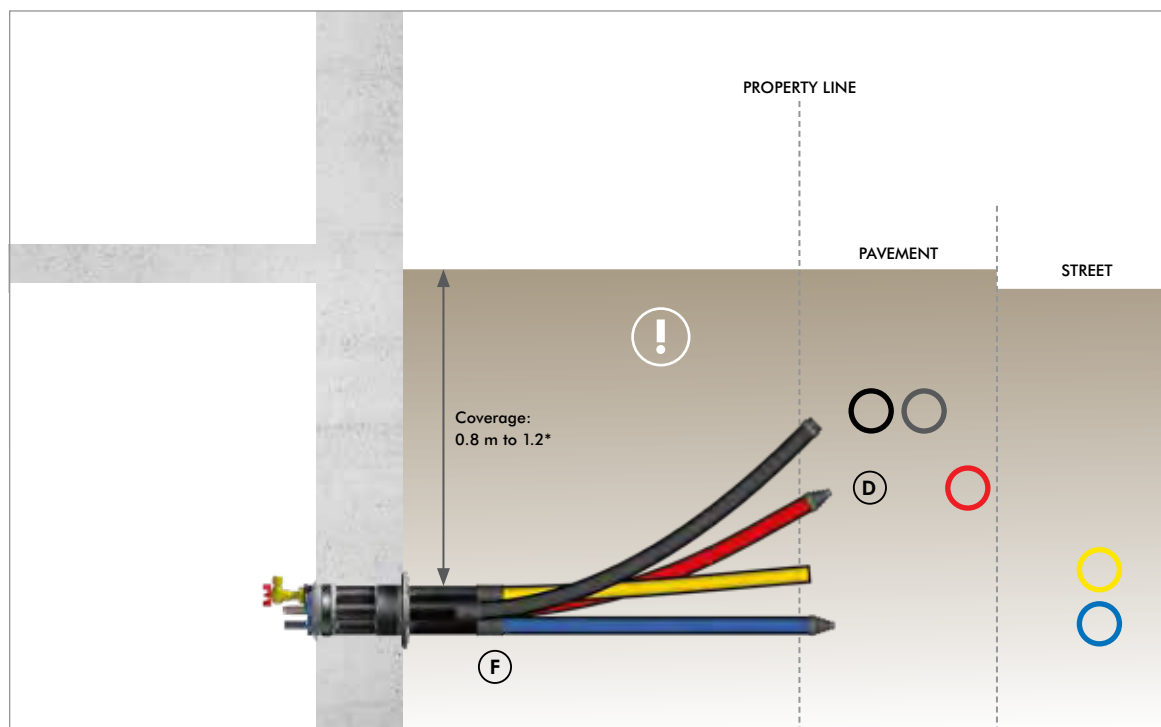
An overview of all
DOYMA contact persons
is provided here:



INSTALLATION NOTES

FOR BUILDINGS WITH BASEMENTS

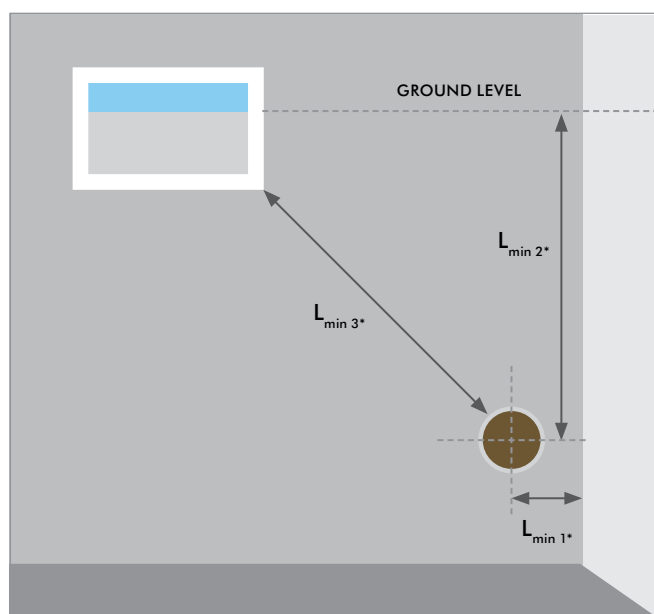
Quadro-Sicura® Nova 1/breit



ATTENTION!

No inspection shafts, drainage pipes or other lines are permitted to be laid in the area of the building connection section.

Installation distances in the basement



Distances for Quadro-Sicura® Nova

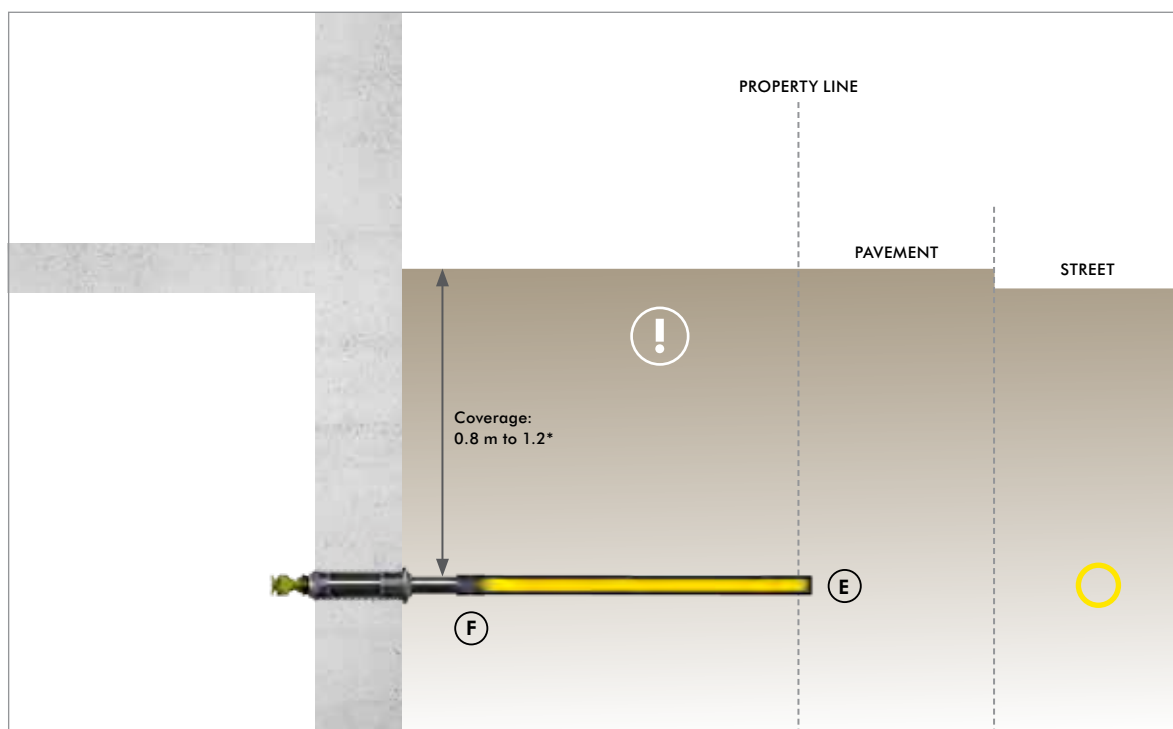
- L_{min1} = distance to wall ≥ 15 cm
- L_{min2} = coverage from ground level – water line
= 0.8 m – 1.2 m or as agreed with the respective utility company
- $L_{min3} \geq$ recommendation: distance from window to core bore
 ≥ 0.8 m

Distances for Quadro-Sicura® E

- L_{min1} = distance to wall ≥ 10 cm
- L_{min2} = coverage from ground level – water line
= 0.8 m – 1.2 m or as agreed with the respective utility company
- $L_{min3} \geq$ recommendation: distance from window to core bore
 ≥ 0.8 m



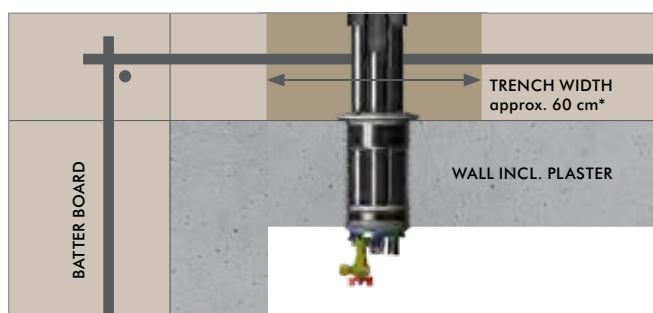
Quadro-Secura® E1/breit



ATTENTION!

No inspection shafts, drainage pipes or other lines are permitted to be laid in the area of the building connection section.

Placement of Quadro-Secura® Nova 1/breit

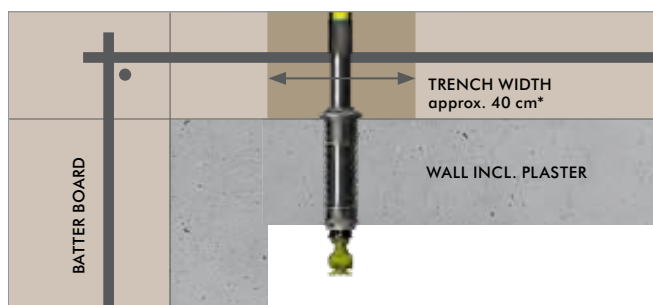


IMPORTANT!

The grid operators are responsible for establishing the respective building connections!

**Please determine the exact dimensions with your utility company.

Placement of Quadro-Secura® E1/breit



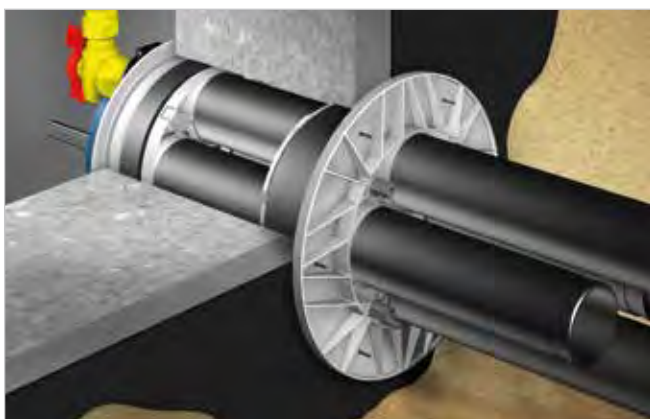
LEGEND

○ TELECOM	Ⓐ INSTALLATION PART
○ CABLE TV	Ⓑ CAST-IN PART
○ ELECTRICITY	Ⓒ CONNECTING SLEEVES
○ GAS	Ⓓ JACKET PIPE END PLUGS
○ WATER	Ⓔ GAS RING PLUG
	Ⓕ DOUBLE SLEEVE

INSTALLATION NOTES

FOR BUILDINGS WITH BASEMENTS

Black tank: sealing in accordance with DIN 18533

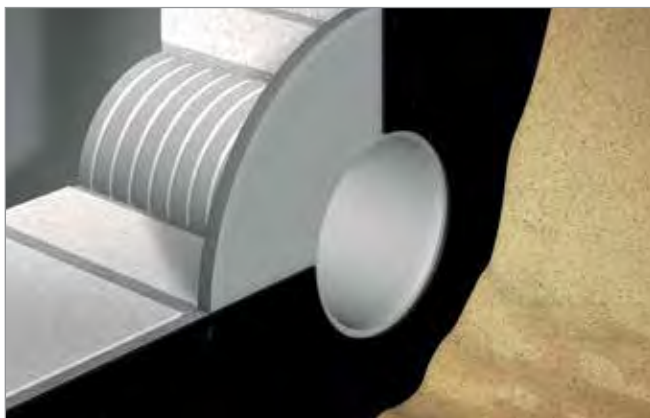


Quadro-Secura® Nova 1/breit

According to DIN 18533, for pressing water with up to 3 m of water exposure (W2.1-E), certified house lead-in systems can be used which have a seal flange with a width ≥ 30 mm. This includes, for example, Quadro-Secura Nova 1, Nova 1/breit, E1 or E1/breit.

A prerequisite for this is an even and secure wall and sealing surface in the area of the seal flange. A corresponding flange, and depending on the system, a casing as well, may be necessary in order to compensate for unevenness in the masonry.

Solutions for different wall properties



Curaflex® 3001 casing in masonry

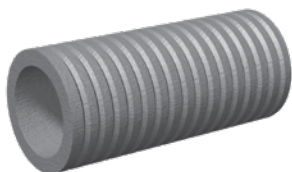
The variety of wall structures with sometimes different leak-tightness levels make planning and creating penetrations difficult.

Installing the right pipe sleeves for this when creating the wall makes for safe, proper and professional sealing.

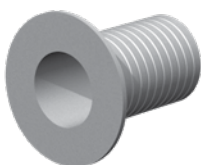
! ATTENTION!

A casing generally needs to be inserted in the masonry in the case of drywall systems!

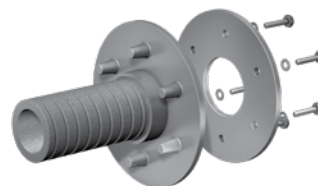
For more information, visit: www.doyma.com



Curaflex® 3000 for waterproof concrete structures



Curaflex® 3001 with bonding flange for tanking membranes or thick coating



Curaflex® 4006 with fixed/loose flange for tanking membranes



Solutions for twin/element walls

Execution of penetrations in waterproof structures made of concrete is governed by the DAfStb (German Committee for Reinforced Concrete) guideline, 'Wasserandurchlässige Bauwerke aus Beton' [Waterproof structures made of concrete]. The following types can be used:

- In-situ concrete
- Prefabricated concrete
- Element wall (twin wall)

Installation in twin/element walls

Twin/element walls are a combination of prefabricated concrete and in-situ concrete. The prefabricated concrete walls are held apart by lattice girders and concrete is then poured into the cavity between them on site (in-situ concrete). The in-situ concrete shrinks when it sets. There is a risk that the in-situ concrete will not set into the concrete walls and capillaries will form.

Another weak point is the joints between the individual element components. Due to their small wall thickness, waterproofing of the prefabricated concrete parts is not ensured.

There is therefore the risk that water will pass the outer prefabricated concrete walls and collect in front of the in-situ concrete core.

Where is sealing required?

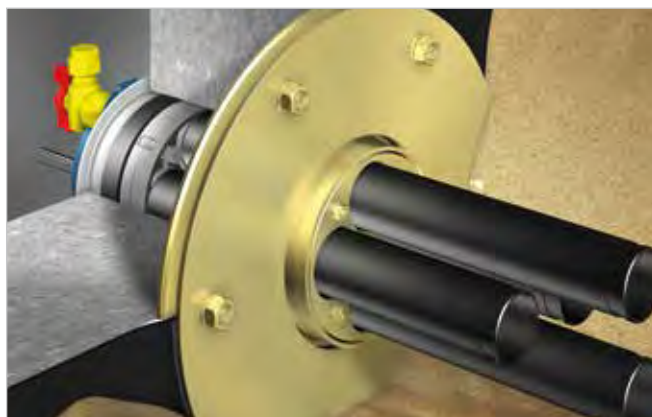
The basic rule is that wherever the sealing level of the wall is, that's where sealing is required. As the sealing level can vary, the procedure should be clarified with the planner or wall manufacturer in case of questions and doubts concerning the position of the sealing level.

See the installation notes on the following page for this.

! ATTENTION!

Installing the right casings for this when creating the wall makes for safe, proper and professional sealing.

Black tank: sealing in accordance with DIN 18533



Quadro-Sicura® Nova 3 in combination with the fixed/loose flange design Curaflex® C/2/SD/6/M

If a concrete core bore is required in a black tank as a seal against moisture, it is a good idea to install the Quadro-Sicura® Nova 3 multi-compartment house lead-in combined with a fixed/loose flange.

The following fixed/loose flange designs are recommended depending on the load case:

- Curaflex® C/2/SD/6/M (against pressing water)
- Curaflex® C/2/SD/5/M (against non-pressing water)

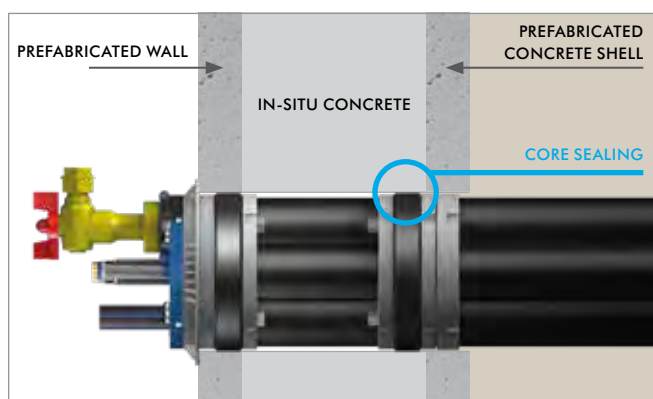
If the wall is masonry and the black tank takes the form of a membrane created from a liquid (e.g. thick coating), it is a good idea to install the Curaflex® 3001 casing. This casing can be combined with all Quadro-Sicura® house lead-ins for buildings with basements.



INSTALLATION NOTES

FOR BUILDINGS WITH BASEMENTS

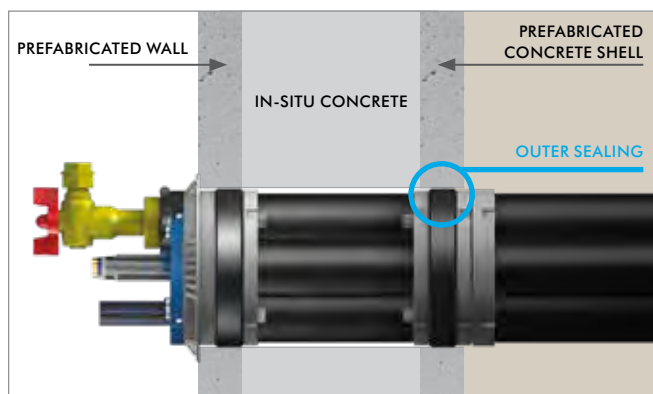
Sealing for twin/element walls



Quadro-Secura® Nova 2

Sealing in in-situ concrete

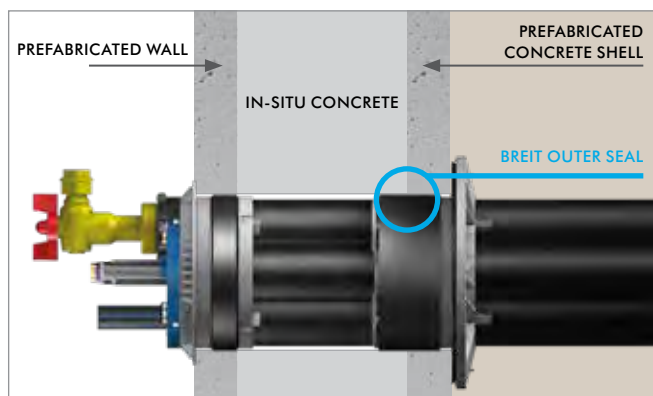
The sealing level is the in-situ concrete (waterproof concrete). The outer seal of the Quadro-Secura® Nova 2 must be positioned in the in-situ concrete.



Quadro-Secura® Nova 2

Sealing in outer prefabricated concrete shell

If the wall manufacturer deems the outer prefabricated concrete shell as the sealing level, the outer seal of the Quadro-Secura® Nova 2 must also be positioned there.



Quadro-Secura® Nova 1/breit with breit outer seal

OUR
RECOMMEN-
DATION

Sealing with breit outer seal

With a seal surface 80 mm breit, the Quadro-Secura® Nova 1/ breit outer seal provides additional safety. It creates a seal both in the in-situ concrete and in the outer prefabricated concrete shell.

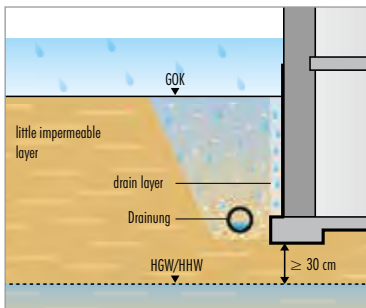
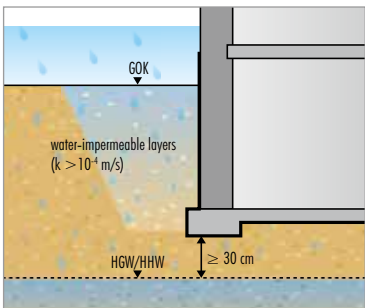
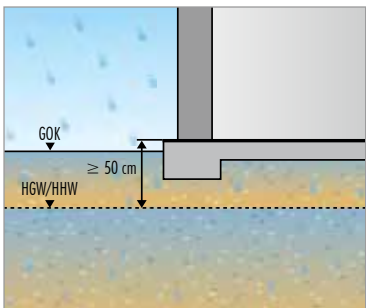
DIN 18533 'BLACK TANK' – WATERPROOFING GUIDELINE 'WHITE TANK'

Overview of water exposure

NON-PRESSING WATER

DIN 18533 W1-E: SOIL MOISTURE AND NON-PRESSING WATER

- W1.1-E: soil moisture**
Soil/fill heavily water-permeable
- W1.1-E: soil moisture**
Non-pressing water
Soil/fill heavily water-permeable
- W1.2-E: soil moisture**
Non-pressing water
Soil/fill less water-permeable
with drainage in accordance with
DIN 4095

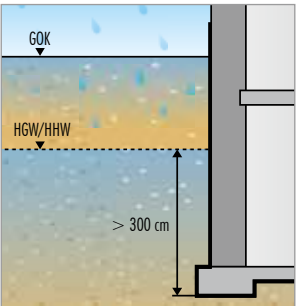
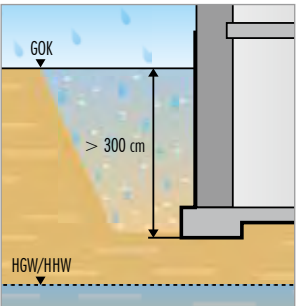
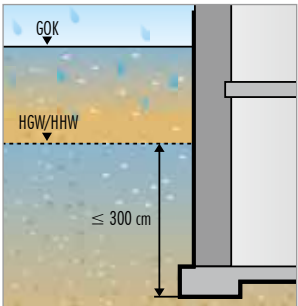
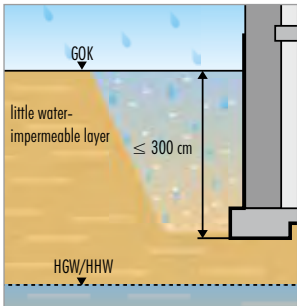


Waterproofing guideline, load class 2: soil moisture and non-standing seepage water

PRESSING WATER

DIN 18533 W2-E: PRESSING WATER

- W2.1-E: standing water up to 3 m**
Soil/fill less water-permeable
- W2.1-E: groundwater/ flood level up to 3 m**
- W2.2-E: standing water greater than 3 m**
Soil/fill less water-permeable
- W2.2-E: groundwater/ flood level up to 3 m**



Waterproofing guideline, load class 1: Constant and temporary pressing water

Subject to technical changes. Some illustrations include accessories. R-WT-1-514-02/2024

More information can be found in the DOYMA 'Basic principles of sealing systems' documentation

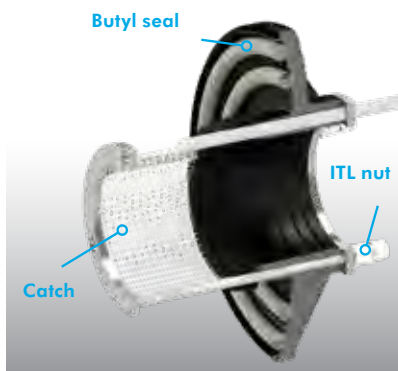
EASY – FAST – SAFE

Quadro-Sicura® technologies in detail

EASY FIX SYSTEM

QUICK AND EASY INSTALLATION

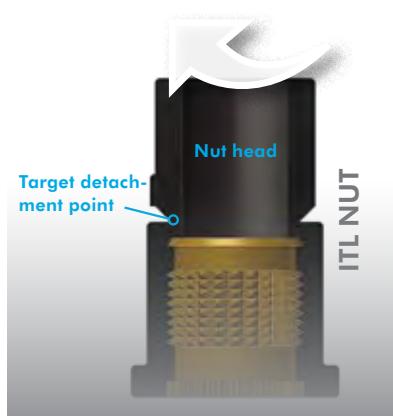
- Installation without additional tensioning device
- Butyl seal integrates with the existing tanking membrane
- Drift in hollow spaces (e.g. masonry) is reliably prevented.



INTEGRATED TORQUE LIMITER

ALWAYS THE RIGHT TORQUE

- The specially developed ITL nut automatically guarantees the right torque.
- The nut head detaches at the defined torque.
- Proper installation is possible even with a cordless screwdriver.



TURN STOP SYSTEM

INSTALLATION WITHOUT SPECIAL TOOLS

- An integrated tightening limiter clearly signals when the required torque has been reached.
- No torque spanner is required for installation. Easy and reliable installation guaranteed.



INNOVATIVE

- SOPHISTICATED INSTALLATION TECHNOLOGY
- HIGH-QUALITY MATERIALS

SAFE

- EXTRAORDINARY 25-YEAR WARRANTY – FAR BEYOND LEGAL REQUIREMENTS

SEALING SYSTEMS FROM DOYMA

Effective protection against radon



WHERE DOES RADON COME FROM?

Radon is a noble gas and a natural decay product that comes from uranium-containing rocks in the soil. Colourless and odourless, it is imperceptible to humans. Measurements in some regions show especially high radon levels – and unfortunately these worrying measurements are not isolated cases. 'Radon maps' record radon concentrations in detail for the different regions of Germany.

WHAT DANGER DOES RADON POSE?

Radon can get in through openings in basement walls and building foundations (e.g. non-tight piping) and then eventually reach the living spaces in a building. According to the World Health Organisation (WHO), long-term contamination of the breathing air at levels over 100 Bq/m³ (becquerel per cubic metre) is likely to be harmful to health. Study results show a proportional correlation between rising radon concentration and risk of lung cancer. The risk of lung cancer increases by about ten per cent per 100 Bq/m³ increase in the radon concentration. After smoking, radon is the most common cause of lung cancer.¹⁾

CERTIFIED SAFETY FOR THE ENTIRE COMPONENT

Logical consequence: all elements of the building envelope that come into contact with soil must be permanently sealed against radon. This is especially true for supply and disposal lines, both in new builds and also when renovating existing buildings. A material test is usually conducted to verify radon tightness. Current radon tests go significantly further: as a proactive measure, DOYMA has had the most important **sealing systems in their entirety** tested by an independent testing institute (IAF in Radeberg). This means that the systems were tested in their fully assembled and installed state. The result: **all systems were certified to be 'radon-tight'!**

¹⁾ Source: website of the German Federal Office for Radiation Protection (BfS);

'Health effects of radon in confined spaces'



The following DOYMA product groups are certified:

- Quadro-Secura® multi-compartment house lead-ins
- Quadro-Secura® single compartment house lead-ins
- Curaflex Nova® sealing systems
- Curaflex® sealing systems

Want to know more about which individual products are 'radon-tight'? Visit our website:

www.doyma.com



Quadro-Sicura® Nova 1

for buildings with basements

PRESSING WATER

- Multi-compartment house lead-in **with sealing on both sides**
- Installation in **pre-installed pipe sleeve or core bore in waterproof concrete** (white tank)
- For the following utilities: gas, water, electricity and telecommunications
- With **additional seal flange** for use in accordance with DIN 18533 W2.1-E (black tank)



PRODUCT ADVANTAGES

- Non-corrosive and non-conductive
- Installation without torque spanner
- Infinitely variable modular gaskets for water and energy
- Easy assignment of utility seal through symbol identification

TECHNICAL DETAILS

- DVGW-approved
- Leak-tight against gas and pressing water
- radon-tight – according to FHRK information sheet MB101 meets the requirements for radon precautionary areas
- Optionally, methane gas resistant design is available
- Dry installation
- 100% separation of utilities; each section is sealed separately
- Variable arrangement of individual compartments possible
- The entire component is freely rotatable according to the connection requirements
- Relining possible when connecting jacket pipes
- Connection option for rigid or flexible jacket pipes DN 75.
- All utilities are given dummy plugs that are leak-tight against gas and pressing water
- With seal flange in accordance with DIN 18533

Supply lines	Pipe/cable Ø
Gas	Gas house lead-ins RMA, Schuck, VAF Voigt, Burger: DN 25
Water	Outer diameter: 32 mm, 40 mm, 50 mm; optional outer diameter 63 mm
Electricity	Outer diameter of 25–53 mm
Telecommunications	Outer diameter: 2 × 5–7 mm, 4 × 7–13 mm, 1 × 13–21 mm

Dimensions	
Core bore/pipe sleeve Ø	199–204 mm
Wall thicknesses	190–550 mm


Further dimensions and versions available upon request.

For gas house lead-in	Article number
For RMA gas house lead-in	2411 000 000 00
For Schuck gas house lead-in	2412 000 000 00

Prices do not include fixtures and pipes/cables.

Quadro-Sicura® Nova 1/breit

for buildings with basements

 PRESSING WATER

- Multi-compartment house lead-in **with sealing on both sides**
- Installation in **pre-installed pipe sleeve or core bore in waterproof concrete** (white tank)
- Utilities: gas, water, electricity and telecommunications
- With **additional seal flange** for use in accordance with DIN 18533 W2.1-E (black tank)
- Ideal for **twin/element walls**



25 years
guarantee



PRODUCT ADVANTAGES

- Non-corrosive and non-conductive
- Installation without torque spanner
- Infinitely variable modular gaskets for water and energy
- Easy assignment of utility seal through symbol identification
- Breit outer seal covers prefabricated concrete shell and core concrete

TECHNICAL DETAILS

- DVGW-approved
- Leak-tight against gas and pressing water
- radon-tight – according to FHRK information sheet MB101 meets the requirements for radon precautionary areas
- Dry installation
- 100% separation of utilities; each section is sealed separately
- Variable arrangement of individual compartments possible
- The entire component is freely rotatable according to the connection requirements
- Relining possible when connecting jacket pipes
- Connection option for rigid or flexible jacket pipes DN 75.
- All utilities are given dummy plugs that are leak-tight against gas and pressing water
- Suitable for twin/element walls
- With seal flange in accordance with DIN 18533

Supply lines	Pipe/cable Ø
Gas	Gas house lead-ins RMA, Schuck, VAF Voigt, Burger: DN 25
Water	Outer diameter: 32 mm, 40 mm, 50 mm; optional outer diameter 63 mm
Electricity	Outer diameter of 25–53 mm
Telecommunications	Outer diameter: 2 × 5–7 mm, 4 × 7–13 mm, 1 × 13 – 21 mm

Dimensions	
Core bore/pipe sleeve Ø	199–203 mm
Wall thicknesses	240–550 mm

Further dimensions and versions available upon request.

For gas house lead-in	Article number
For RMA gas house lead-in	2411 000 000 04
For Schuck gas house lead-in	2412 000 000 04

Prices do not include fixtures and pipes/cables.

Quadro-Sicura® Nova 2

for buildings with basements

PRESSING WATER

- Multi-compartment house lead-in **with sealing on both sides**
- Installation in **pre-installed pipe sleeve or core bore in waterproof concrete (white tank)**
- For the following utilities: gas, water, electricity and telecommunications



25 years
guarantee

PRODUCT ADVANTAGES

- Non-corrosive and non-conductive
- Installation without torque spanner
- Infinitely variable modular gaskets for water and energy
- Easy assignment of utility seal through symbol identification

TECHNICAL DETAILS

- DVGW and SVGW-approved
- Leak-tight against gas and pressing water
- radon-tight – according to FHRK information sheet MB101 meets the requirements for radon precautionary areas
- Optionally, methane gas resistant design is available
- Dry installation
- Optional installation in accordance with DIN 18533 possible
- 100% separation of utilities; each section is sealed separately
- Variable arrangement of individual compartments possible
- The entire component is freely rotatable according to the connection requirements
- Relining possible when connecting jacket pipes
- Connection option for rigid or flexible jacket pipes DN 75
- All utilities are given dummy plugs that are leak-tight against gas and pressing water

Supply lines	Pipe/cable Ø
Gas	Gas house lead-ins RMA, Schuck, VAF Voigt, Burger: DN 25
Water	Outer diameter: 32 mm, 40 mm, 50 mm; optional outer diameter 63 mm
Electricity	Outer diameter of 25–53 mm
Telecommunications	Outer diameter: 2 × 5–7 mm, 4 × 7–13 mm, 1 x 13 – 21 mm

Dimensions	
Core bore/pipe sleeve Ø	199–204 mm
Wall thicknesses	150–550 mm


Further dimensions and versions available upon request.

For gas house lead-in	Article number
For RMA gas house lead-in	2421 000 000 00
For Schuck gas house lead-in	2422 000 000 00

Prices do not include fixtures and pipes/cables.

Quadro-Sicura® Nova 2/breit

for buildings with basements

 PRESSING WATER

- Multi-compartment house lead-in **with sealing on both sides**
- Installation in **pre-installed pipe sleeve or core bore in waterproof concrete (white tank)**
- For the following utilities: gas, water, electricity and telecommunications
- Ideal for **twin/element walls**



25 years
guarantee



PRODUCT ADVANTAGES

- Non-corrosive and non-conductive
- Installation without torque spanner
- Infinitely variable modular gaskets for water and energy
- Easy assignment of utility seal through symbol identification
- Breit outer seal covers prefabricated concrete shell and core concrete

TECHNICAL DETAILS

- DVGW-approved
- Leak-tight against gas and pressing water
- radon-tight – according to FHRK information sheet MB101 meets the requirements for radon precautionary areas
- Dry installation
- Optional installation in accordance with DIN 18533 possible
- 100% separation of utilities; each section is sealed separately
- Variable arrangement of individual compartments possible
- The entire component is freely rotatable according to the connection requirements
- Relining possible when connecting jacket pipes
- Connection option for rigid or flexible jacket pipes DN 75
- All utilities are given dummy plugs that are leak-tight against gas and pressing water
- Suitable for twin/element walls

Supply lines	Pipe/cable Ø
Gas	Gas house lead-ins RMA, Schuck, VAF Voigt, Burger: DN 25
Water	Outer diameter: 32 mm, 40 mm, 50 mm; optional outer diameter 63 mm
Electricity	Outer diameter of 25–53 mm
Telecommunications	Outer diameter: 2 × 5–7 mm, 4 × 7–13 mm, 1 × 13 – 21 mm

Dimensions	
Core bore/pipe sleeve Ø	199–203 mm
Wall thicknesses	190–550 mm


Further dimensions and versions available upon request.

For gas house lead-in	Article number
For RMA gas house lead-in	2421 000 000 04
For Schuck gas house lead-in	2422 000 000 04

Prices do not include fixtures and pipes/cables.

Quadro-Sicura® Nova 1-M

for buildings with basements

 PRESSING WATER

- Multi-compartment house lead-in **with sealing on both sides**
- Installation in **pre-installed pipe sleeve or core bore in waterproof concrete** (white tank)
- With **additional seal flange** for use in accordance with DIN 18533 W2.1-E (black tank)
- For **multiple assignment** of different utilities



25 years
guarantee



PRODUCT ADVANTAGES

- For multiple assignment of different individual utilities (not gas)
- Non-corrosive and non-conductive
- Installation without torque spanner
- Infinitely variable modular gaskets for water and energy
- Easy assignment of utility seal through symbol identification

TECHNICAL DETAILS

- DVGW and SVGW-approved
- Leak-tight against gas and pressing water
- radon-tight – according to FHRK information sheet MB101 meets the requirements for radon precautionary areas
- Optionally, methane gas resistant design is available
- Dry installation
- 100% separation of utilities; each section is sealed separately
- Variable arrangement of individual compartments possible
- The entire component is freely rotatable according to the connection requirements
- Relining possible when connecting jacket pipes
- Connection option for rigid or flexible jacket pipes DN 75
- All utilities are given dummy plugs that are leak-tight against gas and pressing water
- With seal flange in accordance with DIN 18533

Possible utility assignments		Pipe/cable Ø
Optional	Water	Outer diameter: 32 mm, 40 mm, 50 mm; optional outer diameter 63 mm
	Electricity	Outer diameter of 25–53 mm
	Telecommunications	Outer diameter: 2 × 5–7 mm, 4 × 7–13 mm, 1 × 13 – 21 mm

Dimensions	
Core bore/pipe sleeve Ø	199–204 mm
Wall thicknesses	190–550 mm

Further dimensions and versions available upon request.


Article number
2510 211 000 00

Prices do not include fixtures and pipes/cables.

Prepared as standard for the following building services: 2 × water, 1 × electricity,
1 × telecommunications

Quadro-Sicura® Nova 2-M

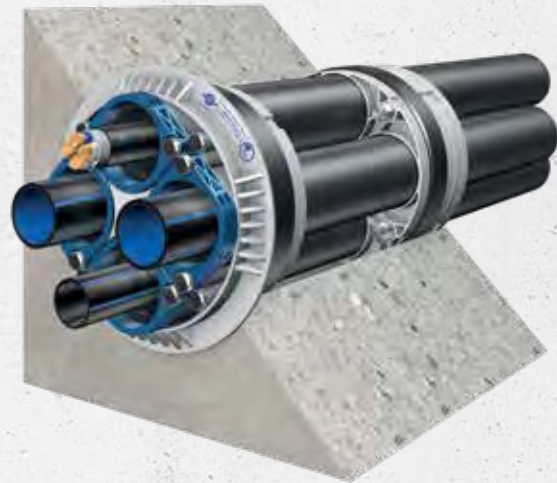
for buildings with basements

 PRESSING WATER

- Multi-compartment house lead-in **with sealing on both sides**
- Installation in **pre-installed pipe sleeve or core bore in waterproof concrete (white tank)**
- For **multiple assignment** of different utilities



25
years
guarantee



PRODUCT ADVANTAGES

- For multiple assignment of different individual utilities (not gas)
- Non-corrosive and non-conductive
- Installation without torque spanner
- Infinitely variable modular gaskets for water and energy

TECHNICAL DETAILS

- DVGW and SVGW-approved
- Leak-tight against gas and pressing water
- radon-tight – according to FHRK information sheet MB101 meets the requirements for radon precautionary areas
- Optionally, methane gas resistant design is available
- Dry installation
- Optional installation in accordance with DIN 18533 possible
- 100% separation of utilities; each section is sealed separately
- Variable arrangement of individual compartments possible
- The entire component is freely rotatable according to the connection requirements
- Relining possible when connecting jacket pipes
- Connection option for rigid or flexible jacket pipes DN 75
- All utilities are given dummy plugs that are leak-tight against gas and pressing water

Possible utility assignments		Pipe/cable Ø
Optional	Water	Outer diameter: 32 mm, 40 mm, 50 mm; optional outer diameter 63 mm
	Electricity	Outer diameter of 25–53 mm
	Telecommunications	Outer diameter: 2 × 5–7 mm, 4 × 7–13 mm, 1 × 13 – 21 mm

Dimensions	
Core bore/pipe sleeve Ø	199–204 mm
Wall thicknesses	150–550 mm

Further dimensions and versions available upon request.

Article number
2520 211 000 00

Prices do not include fixtures and pipes/cables.

Prepared as standard for the following building services: 2 × water, 1 × electricity, 1 × telecommunications)

Quadro-Sicura® Nova 1-FW

for buildings with basements

PRESSING WATER

- Multi-compartment house lead-in **with sealing on both sides**
- Installation in **pre-installed pipe sleeve or core bore in waterproof concrete** (white tank)
- With **additional seal flange** for use in accordance with DIN 18533 W2.1-E (black tank)
- For the following utilities: district/geothermal heating, water, electricity and telecommunications

25
years
guarantee



PRODUCT ADVANTAGES

- Infinitely variable modular gaskets for water and energy
- Space-saving building lead-in of supply lines
- Easy assignment of utility seal through symbol identification
- Installation without torque spanner possible

TECHNICAL DETAILS

- Dry installation
- Leak-tight against gas and pressing water
- radon proof – according to FHRK information sheet MB101
- Split sealing of the respective building services
- Variable arrangement of individual compartments possible
- No additional outer seal required
- Connection option for rigid or flexible jacket pipes DN 75 and DN 125
- Visual indication of the tightening torque via control pins
- With seal flange in accordance with DIN 18533

Supply lines	Pipe/cable Ø
Local/district heating or Geothermal heating	Outer diameter 75 mm, 90 mm, 110 mm; optionally 125 mm Outer diameter 32 mm, 40 mm, 50 mm Please specify the diameter with your order
Water	Outer diameter: 32 mm, 40 mm, 50 mm; optional outer diameter 63 mm
Electricity	Outer diameter of 25–53 mm
Telecommunications	Outer diameter: 2 × 5–7 mm, 4 × 7–13 mm, 1 × 13 – 21 mm

Dimensions	
Core bore/pipe sleeve Ø	298–304 mm
Wall thicknesses	200–550 mm

Further dimensions and versions available upon request.

Optional diameters	Article number
2 x 75, 90 or 110 mm	2310 075 000 00
2 x 32 – 50 mm	Please specify the diameter with your order


Prices do not include fixtures and pipes/cables.



Variant: Quadro-Sicura®
Nova 1-FW/breit
for twin/element walls

Quadro-Sicura® Nova 2-FW

for buildings with basements

 PRESSING WATER

- Multi-compartment house lead-in **with sealing on both sides**
- Installation in **pre-installed pipe sleeve or core bore in waterproof concrete (white tank)**
- For the following utilities: district/geothermal heating, water, electricity and telecommunications

25
years
guarantee



PRODUCT ADVANTAGES

- Infinitely variable modular gaskets for water and energy
- Space-saving building lead-in of supply lines
- Easy assignment of utility seal through symbol identification
- Installation without torque spanner possible

TECHNICAL DETAILS

- Dry installation
- Leak-tight against gas and pressing water
- radon proof – according to FHRK information sheet MB101
- Split sealing of the respective building services
- Variable arrangement of individual compartments possible
- No additional outer seal required
- Connection option for rigid or flexible jacket pipes DN 75 and DN 125
- Visual indication of the tightening torque via control pins

Supply lines	Pipe/cable Ø
Local/district heating or Geothermal heating	Outer diameter 75 mm, 90 mm, 110 mm; optionally 125 mm Outer diameter: 32 mm, 40 mm, 50 mm Please specify the diameter with your order
Water	Outer diameter: 32 mm, 40 mm, 50 mm; optional outer diameter 63 mm
Electricity	Outer diameter of 25–53 mm
Telecommunications	Outer diameter: 2 × 5–7 mm, 4 × 7–13 mm, 1 × 13 – 21 mm

Dimensions	
Core bore/pipe sleeve Ø	298–304 mm
Wall thicknesses	200–550 mm

Further dimensions and versions available upon request.

Optional diameters	Article number
2 x 75, 90 or 110 mm	2320 075 000 00
2 x 32 – 50 mm	Please specify the diameter with your order


Prices do not include fixtures and pipes/cables.



Variant: Quadro-Sicura®
Nova 2-FW/breit
for twin/element walls

Quadro-Secura® E1

for buildings with basements

 PRESSING WATER

- Single-compartment house lead-in **with sealing on both sides**
- Installation in **pre-installed pipe sleeve or core bore in waterproof concrete (white tank)**
- Building services: gas, water, electricity and telecommunications
- With **additional seal flange** for use in accordance with DIN 18533 W2.1-E (black tank)



25 years
guarantee



PRODUCT ADVANTAGES

- Infinitely variable modular gaskets for water or energy
- Easy assignment of utility seal through symbol identification

TECHNICAL DETAILS

- DVGW-approved
- Leak-tight against gas and pressing water
- radon-tight – according to FHRK information sheet MB101 meets the requirements for radon precautionary areas
- Optionally, methane gas resistant design is available
- Dry installation
- Relining possible when connecting jacket pipes
- Connection option for rigid or flexible jacket pipes DN 75
- The utility is given a dummy plug that is leak-tight against gas and pressing water
- With seal flange in accordance with DIN 18533

Supply lines	Pipe/cable Ø
Gas or	Gas house lead-ins RMA, Schuck, VAF Voigt, Burger: DN 25
Water or	Outer diameter 32: mm, 40 mm, 50 mm; optional outer diameter 63 mm
Electricity or	Outer diameter of 25–53 mm
Telecommunications or	Outer diameter: 2 × 5–7 mm, 4 × 7–13 mm, 1 × 13–21 mm
For fibre optic cables (electricity, water, telecommunications, fibre optic cables)	Outer diameter: 2 × 5–7 mm, 2 × 7–13 mm, 1 × 12–16 mm, 1 × 23–40 mm
Dimensions	
Core bore/pipe sleeve Ø	99–103 mm
Wall thicknesses	130–550 mm

Further dimensions and versions available upon request.

Utility seal	Article number
For RMA gas house lead-in	2811 000 000 00
For Schuck gas house lead-in	2812 000 000 00
For water	2810 000 010 00
For electricity, water, telecommunications, fibre optic cables	2810 000 025 00
For energy	2810 000 011 00
For telecom	2810 000 012 00


Prices do not include fixtures and pipes/cables.



Variant: Quadro-Secura® E1/breit
for twin/element walls (160–550 mm)
Fig.: Quadro-Secura® E1/breit for gas

Quadro-Sicura® E2

for buildings with basements

 PRESSING WATER

- Single-compartment house lead-in **with sealing on both sides**
- Installation in **pre-installed pipe sleeve or core bore in waterproof concrete (white tank)**
- For the following utilities: gas, water, electricity and telecommunications



25 years
guarantee



PRODUCT ADVANTAGES

- Infinitely variable modular gaskets for water or energy
- Easy assignment of utility seal through symbol identification

TECHNICAL DETAILS

- DVGW-approved
- Leak-tight against gas and pressing water
- radon-tight – according to FHRK information sheet MB101 meets the requirements for radon precautionary areas
- Optionally, methane gas resistant design is available
- Optional installation in accordance with DIN 18533 possible
- Dry installation
- Relining possible when connecting jacket pipes
- Connection option for rigid or flexible jacket pipes DN 75
- The utility is given a dummy plug that is leak-tight against gas and pressing water

Supply lines	Pipe/cable Ø
Gas or	Gas house lead-ins RMA, Schuck, VAF Voigt, Burger: DN 25 (other dimensions available upon request)
Water or	Outer diameter: 32 mm, 40 mm, 50 mm; optional outer diameter 63 mm
Electricity or	Outer diameter of 25–53 mm
Telecommunications or	Outer diameter: 2 × 5–7 mm, 4 × 7–13 mm, 1 × 13–21 mm
For fibre optic cables (electricity, water, telecommunications, fibre optic cables)	Outer diameter: 2 × 5–7 mm, 2 × 7–13 mm, 1 × 12–16 mm, 1 × 23–40 mm
Dimensions	
Core bore/pipe sleeve Ø	99–103 mm
Wall thicknesses	130–550 mm


Further dimensions available upon request.

Utility seal	Article number
For RMA gas house lead-in	2821 000 000 00
For Schuck gas house lead-in	2822 000 000 00
For water	2820 000 010 00
For electricity, water, telecommunications, fibre optic cables	2820 000 025 00
For energy	2820 000 011 00
For telecom	2820 000 012 00

Prices do not include fixtures and pipes/cables.

Quadro-Sicura® E-S

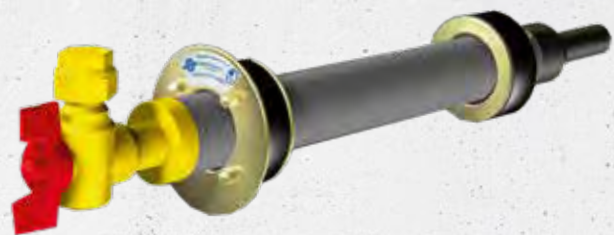
for buildings with basements

 PRESSING WATER

- Single-compartment house lead-in **with sealing on both sides**
- Installation in **pre-installed pipe sleeve or core bore in waterproof concrete (white tank)**
- For the utility gas
- **Without jacket pipe connection**



25 years
guarantee



PRODUCT ADVANTAGES

- No additional mechanical fastening required
- Permanently sealed – no need to re-tension later (maintenance-free)

TECHNICAL DETAILS

- DVGW-approved (RMA, Schuck)
- Extraction and torsion safety in accordance with DVGW VP 601
- Leak-tight against gas and pressing water
- radon-tight – according to FHRK information sheet MB101 meets the requirements for radon precautionary areas
- Installation optionally in accordance with DIN 18533

THE HOUSE LEAD-IN CONSISTS OF:

- one gasket insert with large ring, mounted inside the basement, and one gasket insert, mounted in the outer area of the building wall



Quadro-Sicura® E-S installation situation


Gas duct system type	DN [mm]	Core bore / pipe sleeve [DN in mm]	Wall thicknesses [mm]
RMA	25	100	≥ 90
	32 / 40 / 50	150	≥ 140
Schuck	25	125	≥ 180
	32 / 40 / 50	150	≥ 140
VAF-Voigt	25	100	≥ 140
	50	150	≥ 140
Burger	25 / 32	100	≥ 140

Gas duct system	DN of gas duct system	DN of pipe sleeve/core bore	Article number
For RMA gas duct system	DN 25	100	2831 000 000 00
	DN 32 / DN 40	150	2831 000 018 00
	DN 50	150	2831 000 022 00
For Schuck gas house lead-in	DN 25	125	2832 000 000 00
	DN 32 / DN 40	150	2832 000 017 00
	DN 50	150	2832 000 023 00
For VAF-Voigt gas duct system	DN 25	100	2833 000 000 00
	DN 50	150	2833 000 024 00
For Burger gas duct system	DN 25 / DN 32	100	2834 000 000 00

Prices do not include fixtures and pipes/cables.

Quadro-Secura® ADS

for buildings with basements

 PRESSING WATER

- Single-compartment house lead-in with sealing on both sides
- Installation in pre-installed pipe sleeve or core bore in waterproof concrete (white tank)
- For utilities gas or water
- House lead-ins with larger dimensions



Quadro-Secura®
ADS gas



Quadro-Secura®
ADS water

PRODUCT ADVANTAGES

- Permanently sealed – no need to re-tension later (maintenance-free)

TECHNICAL DETAILS

- Leak-tight against gas and pressing water
- radon proof – according to FHRK information sheet MB101
- House lead-ins combination from Schuck including tear-off protection and anti-twist protection*, as well as pre-assembled gasket inserts
- Extraction and torsion safety in accordance with DVGW VP 601
- Installation optionally in accordance with DIN 18533


Type/version	House lead-ins combination [DN]	Wall thicknesses [mm]	Inner diameter Core bore/pipe sleeve [mm]
Quadro-Secura® ADS gas/water	50	240–700	99–103
Quadro-Secura® ADS gas/water	80		149–153
Quadro-Secura® ADS gas/water	100		199–203
Quadro-Secura® ADS gas/water	150		249–253

Further dimensions and versions available upon request.

DN of house lead-ins combination
50
80
100
150

Quadro-Sicura® Quick/X

for buildings with basements

 PRESSING WATER

- Single-compartment house lead-in with **injection system**
- Use in **the most common wall types** with sealing in accordance with **DIN 18533 W2.1-E** or for **core bore in waterproof concrete (white tank)**
- For **all cable types** or **water lines**
- With seal flange in accordance with **DIN 18533 (black tank)**
- Ideal for **new connections** in existing buildings



25
years
guarantee



For water or electricity



For telecommunications



For fibre optic cables

PRODUCT ADVANTAGES

- With Easy Fix System for easy, fast and safe installation
- With ITL system for optimal contact pressure
- Installation without additional tensioning device
- Ideal for sealing existing bitumen thick coatings
- Connection of jacket pipes possible
- Can even be used with conventional hollow bricks without filling
- Quick installation
- Suitable for building renovations

TECHNICAL DETAILS

- Leak-tight against gas and pressing water up to 1 bar
- For open design
- For the most common pipe and cable diameters
- Integrated plug sealing
- Without additional shrinking
- For bores in the most common wall types with sealing in accordance with DIN 18533 W2.1-E and for core bores in waterproof concrete (white tank)
- Relining possible when connecting jacket pipes
- Connection option for rigid or flexible jacket pipes DN 75

THE HOUSE LEAD-IN CONSISTS OF:

- Quadro-Sicura® Quick/X
- Wall termination ring
- Expansion resin (selectable)
- Jacket pipe end plugs



ACCESSORIES – RECOMMENDED

- 2K cartridge gun

Supply lines	Pipe/cable Ø
Water or energy	Outer diameter: 25 – 53 mm
Telecommunications	Outer diameter: 2 x 5 – 7 mm, 4 x 7 – 13 mm, 1 x 13 – 21 mm
Fibre optic cables	Outer diameter: 2 x 5 – 7 mm, 2 x 7 – 13 mm, 1 x 12 – 16 mm, 1 x 23 – 40 mm

Dimensions	
Core bore/pipe sleeve Ø	99 – 103 mm
Wall thicknesses	200–600 mm, or 200 - 1.200 mm
Outer diameter of seal flange	200 mm

Further dimensions and versions available upon request.

Variant including expansion resin

Product	Utility	Max. Wanddicke [mm]	Article number	PU
Quadro-Secura® Quick/X	Water or energy	600 mm	2600 000 910 10	1 items
	Telecom	600 mm	2600 000 912 10	
	Fibre optic cables	600 mm	2600 000 925 10	
	Water or energy	600 mm	2600 000 910 11	10 items
	Telecom	600 mm	2600 000 912 11	
	Fibre optic cables	600 mm	2600 000 925 11	
	Water or energy	1.200 mm	2600 261 231 10	1 items
	Telecom	1.200 mm	2600 261 236 10	
	Fibre optic cables	1.200 mm	2600 261 241 10	

Prices do not include fixtures and pipes/cables

Variant excluding expansion resin

Product	Utility	Article number	PU
Quadro-Secura® Quick/X	Water or energy	2600 000 910 00	1 Stück
	Telecom	2600 000 912 00	
	Fibre optic cables	2600 000 925 00	
	Water or energy	2600 000 910 01	10 Stück
	Telecom	2600 000 912 01	
	Fibre optic cables	2600 000 925 01	

Prices do not include fixtures and pipes/cables

Ring plug (building interior)

For sealing the circular gap between the pipe and the casing

Product	Article number
Ring plug for water or energy	2990 703 916 50
Ring plug for telecommunications	2990 703 913 50
Ring plug for fibre optic cables	2990 703 914 50

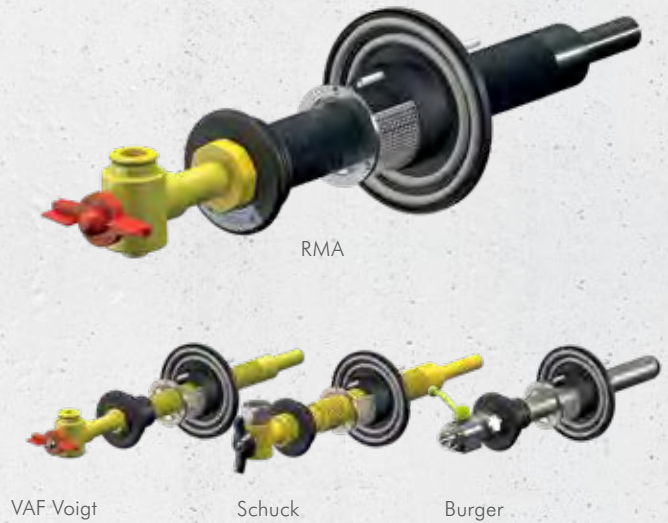
Quadro-Sicura® Quick/G

for buildings with basements



PRESSING WATER

- Single-compartment house lead-in with **injection system**
- Use in **the most common wall types** with sealing in accordance with **DIN 18533 W2.1-E** or for **core bore in waterproof concrete (white tank)**
- For the utility **gas**
- With seal flange in accordance with **DIN 18533 (black tank)**
- Ideal for **new connections** in existing buildings



PRODUCT ADVANTAGES

- With Easy Fix System for easy, fast and safe installation
- With ITL system for optimal contact pressure
- Installation without additional tensioning device
- Allows for the simultaneous routing of gas duct system combinations and fibre optic cables/pipes (2 × Ø 7 mm)
- Ideal for sealing existing bitumen thick coatings
- Can even be used with conventional hollow bricks without filling
- Quick installation
- Suitable for building renovations
- No additional mechanical fastening required

TECHNICAL DETAILS

- DVGW-approved (RMA, Schuck und VAF Voigt)
- Leak-tight against gas and pressing water up to 1 bar
- For open design
- Suitable for RMA / Schuck / VAF Voigt / Burger gas duct system combinations
- For bores in the most common wall types with sealing in accordance with DIN 18533 W2.1-E and for core bores in waterproof concrete (white tank)

THE HOUSE LEAD-IN CONSISTS OF:

- Quadro-Sicura® Quick/G
- Wall termination ring
- Expansion resin (selectable)

Supply lines	Gas duct system type
Gas	RMA, Schuck, VAF Voigt or Burger

Dimensions	
Core bore/pipe sleeve Ø	99–103 mm
Wall thicknesses	200 – max. 1140 mm (depending on gas duct system type)
Outer diameter of seal flange	200 mm

Variant including expansion resin

Product	Gas duct system type	Article number	VPE
Quadro-Secura® Quick/G	RMA/Schuck DN 25	2618 025 000 10	1 Stück
	VAF-Voigt DN 25	2613 025 000 10	
	Burger DN 25 + DN 32	2614 025 000 10	
	RMA/Schuck DN 25	2618 025 000 11	10 Stück
	VAF-Voigt DN 25	2613 025 000 11	
	Burger DN 25 + DN 32	2614 025 000 11	

Prices do not include fixtures and pipes.

Variant excluding expansion resin

Product	Gas duct system type	Article number	VPE
Quadro-Secura® Quick/G	RMA/Schuck DN 25	2618 025 000 00	1 Stück
	VAF-Voigt DN 25	2613 025 000 00	
	Burger DN 25 + DN 32	2614 025 000 00	
	RMA/Schuck DN 25	2618 025 000 01	10 Stück
	VAF-Voigt DN 25	2613 025 000 01	
	Burger DN 25 + DN 32	2614 025 000 01	


Prices do not include fixtures and pipes.

Dimensions

RMA Gas-HEK overall length	For a wall thicknesses
730 mm	200 - 420 mm
1100 mm	200 - 660 mm
1250 mm	200 - 810 mm
Schuck Gas-HEK overall length	For a wall thicknesses
700 mm	200 - 390 mm
1000 mm	200 - 690 mm
1485 mm	200 - 1140 mm
Burger Gas-HEK overall length	For a wall thicknesses
750 mm	200 - 650 mm
1150 mm	200 - 900 mm
1500 mm	200 - 1140 mm

Quadro-Sicura® Quick/H

for buildings with basements

 PRESSING WATER

- Single-compartment house lead-in with **injection system**
- Use in **the most common wall types** with sealing in accordance with **DIN 18533 W2.1-E** or for **core bore in waterproof concrete (white tank)**
- For holding the **Curaflex Nova®** sealing systems
- With seal flange in accordance with **DIN 18533 (black tank)**
- Ideal for **new connections** in existing buildings



PRODUCT ADVANTAGES

- With Easy Fix System for easy, fast and safe installation
- With ITL system for optimal contact pressure
- Installation without additional tensioning device
- Ideal for sealing existing bitumen thick coatings
- Can even be used with conventional hollow bricks without filling
- Quick installation
- Suitable for building renovations

TECHNICAL DETAILS

- Leak-tight against gas and pressing water up to 1 bar
- radon-tight – according to FHRK information sheet MB101 meets the requirements for radon precautionary areas
- Integrated casing suitable for the Curaflex Nova® and Curaflex Nova® sealing systems
- Sealing to OD 115 to 125 mm or OD 135 to 145 mm is possible using an adapter sleeve (accessory for type DN 160)
- For bores in the most common wall types with sealing in accordance with DIN 18533 W2.1-E and for core bores in waterproof concrete (white tank)
- Casing offers connection option for rigid or flexible jacket pipes
- Relining possible when connecting jacket pipes

THE HOUSE LEAD-IN CONSISTS OF:

- Quadro-Sicura® Quick/H
- Wall termination ring
- Expansion resin (selectable)



ACCESSORIES – NECESSARY

- Curaflex Nova® sealing systems
- adapter sleeve 160/125 bzw. 160/140
- 2K-cartridge gun

Typ DN/OD [mm]	Inner diameter of casing-Ø [mm]	Core bore/pipe sleeve-Ø [mm]	Outer diameter of seal flange [mm]
110	100	149 – 153	250
160	150	199 – 203	300

Dimensions	
wall thickness	200 – 600 mm, optional to 1200 mm

Variant including expansion resin

Product	Typ	Article number
Quadro-Sicura® Quick/H	110	2630 110 760 10
Quadro-Sicura® Quick/H	160	2630 160 760 10

Preis ohne Curaflex® Dichtungssystem und Leitung.

Variant excluding expansion resin

Product	Typ	Article number
Quadro-Sicura® Quick/H	110	2630 110 760 00
Quadro-Sicura® Quick/H	160	2630 160 760 00

Price without Curaflex® sealing system and pipe

adapter sleeve 160/125 resp. 160/140

adapter sleeve [DN]	Sealing on	Article number
160/125	110 - 125 mm	2990 160 125 00
160/140	130 - 145 mm	2990 160 140 00



Installation example



Quadro-Sicura® Quick/O

for buildings with basements

 PRESSING WATER

- Single-compartment house lead-in with **injection system**
- Use in **the most common wall types** with sealing in accordance with **DIN 18533 W2.1-E** or for **core bore in waterproof concrete** (white tank)
- For sealing **sewer pipes DN DN/OD 110 or DN/OD 160**
- With seal flange in accordance with **DIN 18533** (black tank)
- Ideal for **new connections** in existing buildings



PRODUCT ADVANTAGES

- With Easy Fix System for easy, fast and safe installation
- With ITL system for optimal contact pressure
- Installation without additional tensioning device
- Ideal for sealing existing bitumen thick coatings
- Can even be used with conventional hollow bricks without filling
- Quick installation
- Suitable for building renovations

TECHNICAL DETAILS

- Leak-tight against gas and pressing water up to 1 bar
- radon-tight – according to FHRK information sheet MB101 meets the requirements for radon precautionary areas
- For open design
- For bores in the most common wall types with sealing in accordance with DIN 18533 W2.1-E and for core bores in waterproof concrete (white tank)

THE HOUSE LEAD-IN CONSISTS OF:

- Quadro-Sicura® Quick/O
- Wall termination ring
- Expansion resin (selectable)

Sewer pipe DN/OD [mm]	Core bore/pipe sleeve-Ø [mm]	Outer diameter of seal flange [mm]
110	149 – 153	250
160	199 – 203	300

Dimensions	
Minimum wall thickness	200 mm

Variant including expansion resin

Product	DN/OD	Article number	VPE
Quadro-Sicura® Quick/O	110	2620 110 000 10	1 Items
Quadro-Sicura® Quick/O	110	2620 110 000 16	6 Items
Quadro-Sicura® Quick/O	160	2620 160 000 10	1 Items

Delivery/price without duct pipe.

Variant excluding expansion resin

Product	DN/OD	Article number	VPE
Quadro-Sicura® Quick/O	110	2620 110 000 00	1 Items
Quadro-Sicura® Quick/O	110	2620 110 000 06	6 Items
Quadro-Sicura® Quick/O	160	2620 160 000 00	1 Items

Delivery/price without duct pipe.

HOUSE LEAD-INS

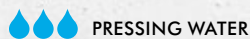


ACCESSORIES – NECESSARY

- 2K cartridge gun

Quadro-Sicura® E-Quick

for buildings with basements



- Single-compartment house lead-in with **injection system**
- Use in **the most common wall types** with sealing in accordance with **DIN 18533 W2.1-E** (black tank) or for **core bore in waterproof concrete** (white tank)
- Utilities: gas, water, electricity or telecommunications



25 years
guarantee



For water



For telecom-
munications



For electricity



For gas



For fibre optic
cables

PRODUCT ADVANTAGES

- With Easy Fix System for easy, fast and safe installation
- With ITL system for optimal contact pressure
- Installation without additional tensioning device
- Ideal for sealing existing bitumen thick coatings
- Can even be used with conventional hollow bricks without filling
- Quick installation
- Suitable for building renovations
- Infinitely variable modular gaskets for water or energy

TECHNICAL DETAILS

- DVGW-approved (RMA, Schuck and VAF-Voigt)
- Leak-tight against gas and pressing water up to 1 bar
- Relining possible when connecting jacket pipes
- Connection option for rigid or flexible jacket pipes DN 75
- The utility is given a dummy plug that is leak-tight against gas and pressing water

THE HOUSE LEAD-IN CONSISTS OF:

- Quadro-Sicura® E3
- Outer seal for Quadro-Sicura® Quick/X
- Expansion resin (selectable)



ACCESSORIES – RECOMMENDED

- 2K cartridge gun



Supply lines	Pipe/cable Ø
Gas or	Gas house lead-ins RMA, Schuck, VAF Voigt, Burger: DN 25 (other dimensions available upon request)
Water or	Outer diameter: 32 mm, 40 mm, 50 mm; optional outer diameter 63 mm
Electricity or	Outer diameter of 25–53 mm
Telecommunications or	Outer diameter: 2 × 5–7 mm, 4 × 7–13 mm, 1 × 13 – 21 mm
For fibre optic cables (electricity, water, telecommunications, fibre optic cables)	Outer diameter: 1 × 23–40, 1 × 12–16, 2 × 7–13 and 2 × 5–7 mm

Dimensions	
Core bore/pipe sleeve Ø	99–103 mm
Wall thicknesses	240–450 mm
Outer diameter of seal flange	200 mm

Further dimensions and versions available upon request.

Variant including expansion resin

Product	Utility seal	Article number
Quadro-Secura® E-Quick	For RMA gas house lead-in	2 84 1 900 000 1 0
	For Schuck gas house lead-in	2 84 2 900 000 1 0
	For water	2 84 0 900 010 1 0
	For fibre optic cables	2 84 0 900 025 1 0
	For electricity	2 84 0 900 011 1 0
	For telecommunications	2 84 0 900 012 1 0

Prices do not include fixtures and pipes/cables.

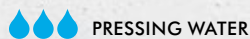
Variant excluding expansion resin

Product	Utility seal	Article number
Quadro-Secura® E-Quick	For RMA gas house lead-in	2 84 1 900 000 0 0
	For Schuck gas house lead-in	2 84 2 900 000 0 0
	For water	2 84 0 900 010 0 0
	For fibre optic cables	2 84 0 900 025 0 0
	For electricity	2 84 0 900 011 0 0
	For telecommunications	2 84 0 900 012 0 0

Prices do not include fixtures and pipes/cables.

Quadro-Secura® MIS 40

for buildings with basements



- Single-compartment house lead-in with **injection system**
- Use in **the most common wall types** with sealing in accordance with **DIN 18533 W2.1-E** (black tank) or for **core bore in waterproof concrete** (white tank)
- For **fibre optic cables/pipes** or telecommunication lines

25
years
guarantee



PRODUCT ADVANTAGES

- Ideal for sealing existing bitumen thick coatings
- Tensioning and sealing via resin injection using an integrated membrane system
- Can even be used with conventional hollow bricks without filling
- Quick installation
- Suitable for building renovations

TECHNICAL DETAILS

- Leak-tight against gas and pressing water up to 1 bar
- radon proof – according to FHRK information sheet MB101
- For open design
- Integrated plug sealing
- Without additional shrinking
- For bores in the most common wall types in accordance with DIN 18533 W2.1-E or for core bore in waterproof concrete (white tank)

THE HOUSE LEAD-IN CONSISTS OF:

- Quadro-Secura® MIS 40
- Wall termination sleeve
- Grid bow
- Expansion resin
- Quick-clamping device



ACCESSORIES – RECOMMENDED

- 2K cartridge gun

Supply lines	Line diameters
Fibre optic cable/pipes	2 × 5–7 mm or 1 × 9–12 mm

Dimensions	
Core bore/pipe sleeve Ø	40–50 mm
Wall thicknesses	200–900 mm, optionally 900–1200 mm

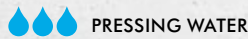
Product	Line diameter	Article number
Quadro-Secura® MIS 40 PU (packaging unit) 10 items	for 2 x (5 – 7 mm)	2100 006 000 00
	for 1 x (9 – 12 mm)	2100 012 000 00

Including 10 items from the 2K resin system, one quick-clamping device and 10 grid bows.



Quadro-Sicura® MIS 60D

for buildings with basements



- Single-compartment house lead-in with **injection system**
- Use in **the most common wall types** with sealing in accordance with **DIN 18533 W2.1-E** (black tank) or for **core bore in waterproof concrete** (white tank)
- For **fibre optic cables/pipes** or **water lines**

25
years
guarantee



PRODUCT ADVANTAGES

- Ideal for sealing existing bitumen thick coatings
- Tensioning and sealing via resin injection using an integrated membrane system
- Can even be used with conventional hollow bricks without filling
- Quick installation
- Suitable for building renovations

TECHNICAL DETAILS

- Leak-tight against gas and pressing water up to 1 bar
- radon proof – according to FHRK information sheet MB101
- For open design
- Integrated plug sealing
- Without additional shrinking
- For bores in the most common wall types in accordance with DIN 18533 W2.1-E or for core bore in waterproof concrete (white tank)

THE HOUSE LEAD-IN CONSISTS OF:

- Quadro-Sicura® MIS 60 D
- Wall termination sleeve
- Grid bow (only for cables with Ø 5–12 mm)
- Expansion resin
- Quick-clamping device
- Base for lines with diameter 30–34 mm
- For deviating line diameter with selectable interchangeable insert



ACCESSORIES – RECOMMENDED

- 2K cartridge gun

Supply lines	Line diameters
Fibre optic/electric cables	30–34 mm or
	24–30 mm or
	18–24 mm or
	12–18 mm or
	6–12 mm or
	4 × 5–7 mm or
	3 × 10 mm
	(Please specify the diameter with your order)

Dimensions	
Core bore/pipe sleeve Ø	62–65 mm
Wall thicknesses	200–900 mm optionally 900–1200 mm


Other dimensions available upon request.

Product	Line diameter	Article number
Quadro-Sicura® MIS 60 D PU (packaging unit) 10 items	for 30 – 34 mm	2110 032 000 00
	for 24 – 30 mm	2110 025 000 00
	for 18 – 24 mm	2110 020 000 00
	for 12 – 18 mm	2110 015 000 00
	for 6 – 12 mm	2110 012 000 00
	for 4 x 5 – 7 mm	2110 007 000 00
	for 3 x 10 mm	2110 010 000 00

Including 10 items from the 2K resin system, one quick-clamping device.

Quadro-Sicura® MIS 90

for buildings with basements

 PRESSING WATER

- Single-compartment house lead-in with **injection system**
- Use in **the most common wall types** with sealing in accordance with **DIN 18533 W2.1-E (black tank)** or for **core bore in waterproof concrete (white tank)**
- For **all cable types** or **water lines**

25
years
guarantee



PRODUCT ADVANTAGES

- Allows for the simultaneous routing of electricity or water and telecommunications
- Ideal for sealing existing bitumen thick coatings
- Tensioning and sealing via resin injection using an integrated membrane system
- Can even be used with conventional hollow bricks without filling
- Quick installation
- Suitable for building renovations

TECHNICAL DETAILS

- Leak-tight against gas and pressing water up to 1 bar
- radon proof – according to FHRK information sheet MB101
- For open design
- For the most common pipe and cable diameters
- Integrated plug sealing
- Without additional shrinking
- For bores in the most common wall types in accordance with DIN 18533 W2.1-E or for core bore in waterproof concrete (white tank)

THE HOUSE LEAD-IN CONSISTS OF:

- Quadro-Sicura® MIS 90
- Wall termination sleeve
- Expansion resin
- Quick-clamping device
- Selectable collar plugs



ACCESSORIES – RECOMMENDED

- 2K cartridge gun

Supply lines	Line diameters
Water, electricity or telecommunications	1 × 24–40 mm or 3 × 7–12 mm or
	1 × 24–52 mm or
	1 × 14–21 mm or
	3 × 7–13 mm or
	1 × 5–13 mm
(Please specify the diameter with your order)	

Dimensions	
Core bore/pipe sleeve Ø	92–102 mm
Wall thicknesses	200–900 mm optionally 900–1200 mm

Further dimensions and versions available upon request.

Product	Line diameter	Article number
Quadro-Sicura® MIS 90 PU (packaging unit) 6 items	for 1 x (24 – 40 mm) and 3 x (7 – 12 mm)	2120 040 000 00
	for 1 x (24 – 52 mm)	2120 050 000 00
	for 1 x (14 – 21 mm), 3 x (7 – 13 mm) and 1 x (5 – 13 mm)	2120 020 000 00

Including 6 items from the 2K resin system, one quick-clamping device.

PLUS X AWARD

AWARD-WINNING SEALING SYSTEMS

BUILDING OWNER'S PACKAGE-HEAT PUMP SYSTEMS Quadro-Sicura® Split heat pump for buildings with basements



Quadro-Sicura® Quick/X Quadro-Sicura® E-Quick



HOUSE LEAD-IN - MULTI-COMPARTMENT BUILDING OWNER'S PACKAGE Quadro-Sicura® All inclusive for buildings with basements

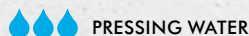


HOUSE LEAD-IN Quadro-Sicura® E X-LWL



Quadro-Sicura® Nova R4

for buildings without basements



- Multi-compartment house lead-ins as a **series version**
- Use in **unfinished structures made of waterproof concrete**
- For four utilities: gas, water, electricity and telecommunications, or for **multiple assignment** of different individual utilities (not gas)



PRODUCT ADVANTAGES

- with bonding flange according DIN 18533 for the connection of waterproofing or radon foils on the floor slab
- Bend-resistant and anti-tear jacket pipes for compliance with bending radii
- Subsequent replacement of pipes and cables possible (relining)
- Assembly without torque spanner
- Can be used for all standard flexible gas duct system combinations
- No on-site leak test in accordance with DVGW G459-1 required

TECHNICAL DETAILS

- DVGW and SVGW-approved
- Leak-tight against gas and pressing water up to 1 bar
- radon-tight – according to FHRK information sheet MB101 meets the requirements for radon precautionary areas
- Variable arrangement of individual compartments possible
- Connection option for rigid or flexible jacket pipes DN 90; larger or smaller diameters are possible via expansion sleeves or reductions
- Suitable for immediate installation in the floor slab or for later retrofitting in a cut-out in the floor slab
- Variable height adjustment to match the finished floor by up to 155 mm
- Cast-in part consisting of plastic pipe sleeve in series arrangement and four connecting sleeves including 3 m bend-resistant jacket pipe, nominal/outer diameter 90 (inner diameter 78) and height-adjustable rod

- Alternatively also available with 6 m, 10 m or 15 m bend-resistant pipe
- All utilities are given dummy plugs that are leak-tight against gas and pressing water
- Optionally, methane gas resistant design is available
- For supply lines with $\varnothing \geq 50$ mm we recommend using the Quadro-Sicura® ADS or Quadro-Sicura® E-BR-R Max

Supply lines	Pipe/cable Ø
Gas	RMA, Schuck, VAF Voigt, Burger gas duct systems: DN 25 (other dimensions available upon request)
Water	Outer diameter: 32 mm, 40 mm, 50 mm
Electricity	Outer diameter of 25–53 mm
Telecommunications	Outer diameter: 2 × 5–7 mm, 4 × 7–13 mm, 1 × 13–21 mm
X-LWL (Electricity, water, telecom, fibre optic cables)	Outer diameter: 2 × 5–7 mm, 2 × 7–13 mm, 1 × 23–40 mm, 1 × 12–16 mm

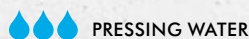
Further dimensions and versions available upon request.

Product	Utility seal	Length of jacket pipe	Article number
Quadro-Secura® Nova R4	RMA for gas, water, electricity, telecom	3 meters	2251 090 540 13
	RMA for gas, water, electricity, telecom	6 meters	2251 090 540 16
	RMA for gas, water, electricity, telecom	10 meters	2251 090 540 11
	RMA for gas, water, electricity, telecom	15 meters	2251 090 540 15
	Schuck for gas, water, electricity, telecom	3 meters	2252 090 540 13
	Schuck for gas, water, electricity, telecom	6 meters	2252 090 540 16
	Schuck for gas, water, electricity, telecom	10 meters	2252 090 540 11
	Schuck for gas, water, electricity, telecom	15 meters	2252 090 540 15
Quadro-Secura® Nova R4-R (cast-in part)	—	3 meters	2270 090 540 13
	—	6 meters	2270 090 540 16
	—	10 meters	2270 090 540 11
	—	15 meters	2270 090 540 15
Quadro-Secura® Nova R4-I (Installation part)	RMA for gas, water, electricity, telecom	—	2261 000 540 10
	Schuck for gas, water, electricity, telecom	—	2262 000 540 10

Prices do not include fixtures and pipes/cables.

Quadro-Sicura® Nova R3

for buildings without basements



- Multi-compartment house lead-ins as a **series version**
- Use in **unfinished structures made of waterproof concrete**
- For four utilities: gas, water, electricity and telecommunications



Quadro-Sicura®
Nova R3

PRODUCT ADVANTAGES

- with bonding flange according DIN 18533 for the connection of waterproofing or radon foils on the floor slab
- Bend-resistant and anti-tear jacket pipes for compliance with bending radii
- Subsequent replacement of pipes and cables possible (relining)
- Installation without torque spanner
- Can be used for all standard flexible gas duct system combinations
- No on-site leak test in accordance with DVGW G459-1 required

TECHNICAL DETAILS

- DVGW and SVGW-approved
- Leak-tight against gas and pressing water up to 1 bar
- radon proof – according to FHRK information sheet MB101
- Variable arrangement of individual compartments possible
- Connection option for rigid or flexible jacket pipes DN 90; larger or smaller diameters are possible via expansion sleeves or reductions
- Suitable for immediate installation in the floor slab or for later retrofitting in a cut-out in the floor slab
- Variable height adjustment to match the finished floor by up to 155 mm
- Cast-in part consisting of plastic pipe sleeve in series arrangement and 2–5 connecting sleeves including 3 m bend-resistant jacket pipe, nominal/outer diameter 90 (inner diameter 78) and height-adjustable rod.

- Alternatively also available with 6 m, 10 m or 15 m bend-resistant pipe
- All utilities are given dummy plugs that are leak-tight against gas and pressing water
- Optionally, methane gas resistant design is available
- For supply lines with $\varnothing \geq 50$ mm we recommend using the Quadro-Sicura® ADS or Quadro-Sicura® E-BR-R Max

Supply lines	Pipe/cable Ø
Gas	RMA, Schuck, VAF Voigt, Burger gas duct systems: DN 25 (other dimensions available upon request)
Water	Outer diameter: 32 mm, 40 mm, 50 mm
Electricity	Outer diameter of 25–53 mm
Telecommunications	Outer diameter: 2 × 5–7 mm, 4 × 7–13 mm, 1 × 13–21 mm
Fibre optic cables (Electricity, water, telecom, fibre optic cables)	Outer diameter: 2 × 5–7 mm, 2 × 7–13 mm, 1 × 23–40 mm, 1 × 12–16 mm

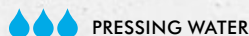
Further dimensions and versions available upon request.

Product	Utility seal	Length of jacket pipe	Article number
Quadro-Secura® Nova R3	For water, electricity, telecom	3 meters	2230 111 530 13
		6 meters	2230 111 530 16
		10 meters	2230 111 530 11
		15 meters	2230 111 530 15
Quadro-Secura® Nova R3-R (cast-in part)	—	3 meters	2270 090 530 13
	—	6 meters	2270 090 530 16
	—	10 meters	2270 090 530 11
	—	15 meters	2270 090 530 15
Quadro-Secura® Nova R3-I (Installation part)	For water, electricity, telecom	—	2260 111 530 10

Prices do not include fixtures and pipes/cables.

Quadro-Sicura® Nova R2

for buildings without basements



- Multi-compartment house lead-ins as a **series version**
- Use in **unfinished structures made of waterproof concrete**
- For four utilities: gas, water, electricity and telecommunications



Quadro-Sicura®
Nova R2

PRODUCT ADVANTAGES

- with bonding flange according DIN 18533 for the connection of waterproofing or radon foils on the floor slab
- Bend-resistant and anti-tear jacket pipes for compliance with bending radii
- Subsequent replacement of pipes and cables possible (relining)
- Installation without torque spanner
- Can be used for all standard flexible gas duct system combinations
- No on-site leak test in accordance with DVGW G459-1 required

TECHNICAL DETAILS

- DVGW and SVGW-approved
- Leak-tight against gas and pressing water up to 1 bar
- radon proof – according to FHRK information sheet MB101
- Variable arrangement of individual compartments possible
- Connection option for rigid or flexible jacket pipes DN 90; larger or smaller diameters are possible via expansion sleeves or reductions
- Suitable for immediate installation in the floor slab or for later retrofitting in a cut-out in the floor slab
- Variable height adjustment to match the finished floor by up to 155 mm
- Cast-in part consisting of plastic pipe sleeve in series arrangement and 2–5 connecting sleeves including 3 m bend-resistant jacket pipe, nominal/outer diameter 90 (inner diameter 78) and height-adjustable rod.

- Alternatively also available with 6 m, 10 m or 15 m bend-resistant pipe
- All utilities are given dummy plugs that are leak-tight against gas and pressing water
- Optionally, methane gas resistant design is available
- For supply lines with $\varnothing \geq 50$ mm we recommend using the Quadro-Sicura® ADS or Quadro-Sicura® E-BR-R Max

Supply lines	Pipe/cable Ø
Gas or	Gas house lead-ins RMA, Schuck, VAF Voigt, Burger: DN 25 (other dimensions available upon request)
Water or	Outer diameter: 32 mm, 40 mm, 50 mm
Electricity or	Outer diameter of 25–53 mm
Telecommunications	Outer diameter: 2 × 5–7 mm, 4 × 7–13 mm, 1 × 13–21 mm
For fibre optic cables (Electricity, water, telecom, fibre optic cables)	Outer diameter: 2 × 5–7 mm, 2 × 7–13 mm, 1 × 23–40 mm, 1 × 12–16 mm

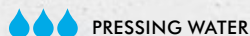
Further dimensions and versions available upon request.

Product	Utility seal	Length of jacket pipe	Article number
Quadro-Secura® Nova R2	For water and fibre optic cables	3 meters	2227 100 520 13
		6 meters	2227 100 520 16
		10 meters	2227 100 520 11
		15 meters	2227 100 520 15
Quadro-Secura® Nova R2-R (cast-in part)	—	3 meters	2270 090 520 13
	—	6 meters	2270 090 520 16
	—	10 meters	2270 090 520 11
	—	15 meters	2270 090 520 15
Quadro-Secura® Nova R2-I (Installation part)	For water and fibre optic cables	—	2267 100 520 10

Prices do not include fixtures and pipes/cables.

Quadro-Sicura® Nova R1

for buildings without basements



- Single-compartment house lead-in
- Use in **unfinished structures made of waterproof concrete**
- For four utilities: gas, water, electricity and telecommunications



Quadro-Sicura®
Nova R1

PRODUCT ADVANTAGES

- with bonding flange according DIN 18533 for the connection of waterproofing or radon foils on the floor slab
- Bend-resistant and anti-tear jacket pipes for compliance with bending radii
- Subsequent replacement of pipes and cables possible (relining)
- Installation without torque spanner
- Can be used for all standard flexible gas duct system combinations
- No on-site leak test in accordance with DVGW G459-1 required

TECHNICAL DETAILS

- DVGW and SVGW-approved
- Leak-tight against gas and pressing water up to 1 bar
- radon proof – according to FHRK information sheet MB101
- Variable arrangement of individual compartments possible
- Connection option for rigid or flexible jacket pipes DN 90; larger or smaller diameters are possible via expansion sleeves or reductions
- Suitable for immediate installation in the floor slab or for later retrofitting in a cut-out in the floor slab
- Variable height adjustment to match the finished floor by up to 155 mm
- Cast-in part consisting of plastic pipe sleeve in series arrangement and 2–5 connecting sleeves including 3 m bend-resistant jacket pipe, nominal/outer diameter 90 (inner diameter 78) and height-adjustable rod.

- Alternatively also available with 6 m, 10 m or 15 m bend-resistant pipe
- All utilities are given dummy plugs that are leak-tight against gas and pressing water
- Optionally, methane gas resistant design is available
- For supply lines with $\varnothing \geq 50$ mm we recommend using the Quadro-Sicura® ADS or Quadro-Sicura® E-BR-R Max

Supply lines	Pipe/cable Ø
Gas or	Gas house lead-ins RMA, Schuck, VAF Voigt, Burger: DN 25 (other dimensions available upon request)
Water or	Outer diameter: 32 mm, 40 mm, 50 mm
Electricity or	Outer diameter of 25–53 mm
Telecommunications	Outer diameter: 2 × 5–7 mm, 4 × 7–13 mm, 1 × 13–22 mm
For fibre optic cables (Electricity, water, telecom, fibre optic cables)	Outer diameter: 2 × 5–7 mm, 2 × 7–13 mm, 1 × 23–40 mm, 1 × 12–16 mm

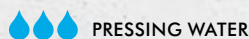
Further dimensions and versions available upon request.

Product	Utility seal	Länge Mantelrohr	Length of jacket pipe
Quadro-Secura® Nova R1	For RMA gas house lead-in	3 meters	2851 090 000 13
		6 meters	2851 090 000 16
		10 meters	2851 090 000 11
		15 meters	2851 090 000 15
	For Schuck gas house lead-in	3 meters	2852 090 000 13
		6 meters	2852 090 000 16
		10 meters	2852 090 000 11
		15 meters	2852 090 000 15
	For water	3 meters	2850 090 010 13
		6 meters	2850 090 010 16
		10 meters	2850 090 010 11
		15 meters	2850 090 010 15
	For water or electricity and telecom	3 meters	2850 090 025 13
		6 meters	2850 090 025 16
		10 meters	2850 090 025 11
		15 meters	2850 090 025 15
	For energy	3 meters	2850 090 011 13
		6 meters	2850 090 011 16
		10 meters	2850 090 011 11
		15 meters	2850 090 011 15
	For telecom	3 meters	2850 090 012 13
		6 meters	2850 090 012 16
		10 meters	2850 090 012 11
		15 meters	2850 090 012 15
Quadro-Secura® Nova R1-R (cast-in part)	—	3 meters	2870 090 000 13
	—	6 meters	2870 090 000 16
	—	10 meters	2870 090 000 11
	—	15 meters	2870 090 000 15
Quadro-Secura® Nova R1-I (Installation part)	For RMA gas house lead-in	—	2861 000 000 10
	For Schuck gas house lead-in	—	2862 000 000 10
	For water	—	2860 000 010 10
	For water or electricity, telecom and fibre optic cable	—	2860 000 025 10
	For energy	—	2860 000 011 10
	For telecom	—	2860 000 012 10

Prices do not include fixtures and pipes/cables.

Quadro-Sicura® E-BP/SRB

for buildings without basements



- Single-compartment house lead-in as a **round version**
- Use in **unfinished structures made of waterproof concrete**
- House lead-in for sealing **flexible pre-insulated local and district heating pipes**

25
years
guarantee



Quadro-Sicura®
E-BP/SRB (DN 200)

PRODUCT ADVANTAGES

- Rigid pipe bend for compliance with bending radii and easy pipe entry
- Pipes and cables can be laid independently from construction progress
- Subsequent replacement of pipes and cables possible (relining)
- Earth-side extension possible with commercially available pipes (plug-in sleeve)

TECHNICAL DETAILS

- Leak-tight against gas and pressing water
- radon proof – according to FHRK information sheet MB101
- Suitable for immediate installation in the floor slab or for later retrofitting in a cut-out in the floor slab
- Cast-in part consisting of plastic pipe sleeve and one connecting sleeve including integrated bend-resistant jacket pipe and height-adjustable rod
- Quadro-Sicura® E-BP/SRB with nominal diameter 200 for pipes and cables with diameters from 75 to 142 mm
- Quadro-Sicura® E-BP/SRB with nominal diameter 250 for pipes and cables with diameters from 141 to 178 mm

Type/version	Plastic pipe sleeve		bending radii pipe bend [mm]
	[DN]	[ID/mm]	
Quadro-Sicura® E-BP/SRB	200	188	800
Quadro-Sicura® E-BP/SRB	250	235	800

The minimum bending radii for the media pipes/cables to be installed must be observed.



- **ACCESSORIES – NECESSARY**
- Curaflex® C40/SRB
(see selection table on next page)



Quadro-Sicura®
E-BP/SRB (DN250)

Subject to technical changes. Some illustrations include accessories. R-WT-1-514-02/2024

Product	Plastic pipe sleeve		Pipe/cable Ø [mm]	Article number
	DN	ID [mm]		
Quadro-Secura® E-BP/SRB	200	188	75 - 142	2850 000 200 00
	250	235	141 - 178	2850 000 250 00

Product	Plastic pipe sleeve		Pipe/cable Ø [mm]	Article number
	DN	ID [mm]		
Curaflex® C 40/SRB	200	188	75 - 80	1034 075 188 00
			88 - 93	1034 090 188 00
			109 - 114	1034 110 188 00
			123 - 128	1034 125 188 00
			138 - 142	1034 140 188 00
	250	235	141 - 146	1034 142 235 00
			158 - 163	1034 160 235 00
			173 - 178	1034 175 235 00

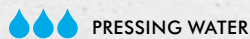
Further dimensions and versions available upon request.
 Additional information about our Curaflex® sealing systems can be found in the applicable product documentation.



Curaflex Nova® C40/SRB

Quadro-Sicura® E-BP-R Max

for buildings without basements



- Single-compartment house lead-in as a **round version**
- Use in **unfinished structures made of waterproof concrete**
- Building services duct system for **sealing larger pipe/cable dimensions** (e.g. water or electricity)
- for **commercial buildings** or **larger residential buildings**

25
years
guarantee



Curaflex Nova® Multi

Quadro-Sicura®
E-BP-R Max (DN100)

PRODUCT ADVANTAGES

- Bend-resistant jacket pipe (inner diameter 110 or 150) for compliance with bending radii (lengths: 3 m, 6 m, 10 m, 15 m or 25 m)
- Pipes and cables can be laid independently from construction progress
- Subsequent replacement of pipes and cables possible (relining)

TECHNICAL DETAILS

- Leak-tight against gas and pressing water
- radon proof – according to FHRK information sheet MB101
- Suitable for immediate installation in the floor slab or for later retrofitting in a cut-out in the floor slab
- Cast-in part consisting of plastic pipe sleeve and one connecting sleeve including integrated bend-resistant jacket pipe and height-adjustable rod
- Quadro-Sicura® E-BP-R Max with nominal diameter 100 including Curaflex Nova® Multi gasket insert for pipes and cables with diameters from 20 to 63 mm (flexibly adjustable)
- Quadro-Sicura® E-BP-R Max with nominal diameter 150 including matching Curaflex Nova® Uno gasket insert (see selection table)

Type/version	Plastic pipe sleeve [DN]	Inner diameter Jacket pipe [mm]
Quadro-Sicura® E-BP-R Max	100	110
Quadro-Sicura® E-BP-R Max	150	150

The minimum bending radii for the media pipes/cables to be installed must be observed.



Curaflex Nova® Uno

Quadro-Sicura®
E-BP-R Max (DN150)



ACCESSORIES – RECOMMENDED

- Mounting set for Curaflex Nova® gasket inserts

Product	Plastic pipe sleeve [DN]	Length of jacket pipe	Pipe/cable Ø [mm]	Article number
Quadro-Sicura® E-BP-R Max incl. Curaflex Nova® Multi	100	3 meters	(0 / 20-63)	2890 100 026 13
		6 meters		2890 100 026 16
		10 meters		2890 100 026 11
		15 meters		2890 100 026 15
		25 meters		2890 100 026 12

Product	Plastic pipe sleeve [DN]	Length of jacket pipe	Pipe/cable Ø [mm]	Article number
Quadro-Sicura® E-BP-R Max incl. Curaflex Nova® Uno	150	3 meters	63-68	2890 150 065 13
		6 meters		2890 150 065 16
		10 meters		2890 150 065 11
		15 meters		2890 150 065 15
		25 meters		2890 150 065 12
		3 meters	73-78	2890 150 075 13
		6 meters		2890 150 075 16
		10 meters		2890 150 075 11
		15 meters		2890 150 075 15
		25 meters		2890 150 075 12
		3 meters	87-92	2890 150 090 13
		6 meters		2890 150 090 16
		10 meters		2890 150 090 11
		15 meters		2890 150 090 15
		25 meters		2890 150 090 12


Further dimensions and versions available upon request.

The bend-resistant jacket pipe can alternatively be blue or black in colour depending on availability.

Additional information about our Curaflex® sealing systems can be found in the applicable product documentation.

Quadro-Sicura® ADS

for buildings without basements

 PRESSING WATER

- Single-compartment house lead-in as a **round version**
- Use in **unfinished structures made of waterproof concrete**
- For utilities **gas or water**
- House lead-ins with **larger dimensions**



PRODUCT ADVANTAGES

- Bend-resistant jacket pipes for compliance with bending radii
- Subsequent replacement of pipes and cables possible (relining)

TECHNICAL DETAILS

- Leak-tight against gas and pressing water
- radon proof – according to FHRK information sheet MB101
- Suitable for immediate installation in the floor slab or for later retrofitting in a cut-out in the floor slab
- One installation part, consisting of Schuck house lead-ins combination including tear-off protection and anti-twist protection, as well as pre-assembled gasket inserts
- Cast-in part consisting of plastic pipe sleeve and one connecting sleeve including integrated bend-resistant jacket pipe and height-adjustable rod

Type/version	House lead-in combination [DN]	Plastic pipe sleeve [DN]	Inner diameter Jacket pipe [mm]
Quadro-Sicura® ADS gas/water	50	100	110
Quadro-Sicura® ADS gas/water	80	150	150

Further dimensions and versions available upon request.

DN of house lead-in combination
50
80

Equipped with 3 m bend-resistant jacket pipe.

The Quadro-Sicura ADS system is excluded from the DOYMA 25-year warranty.

Subject to technical changes. Some illustrations include accessories. R-MT-1-514-02/2024

Quadro-Sicura® SD

for buildings without basements

NON-PRESSING WATER

- Single-compartment house lead-in with **injection system**
- Use as angular penetration in floor slabs made of concrete
- For **cable types** or **water lines**



25 years
guarantee

PRODUCT ADVANTAGES

- Suitable for retrofitting for electricity or water through floor slabs
- Quick installation
- Suitable for building renovations

TECHNICAL DETAILS

- Installation as angular penetration in floor slabs
- Leak-tight against gas and water
- radon proof – according to FHRK information sheet MB101
- For open design
- For the most common pipe and cable diameters
- Integrated plug sealing
- Without additional shrinking
- Suitable for bores in floor slabs made of concrete of load class 2 in accordance with the Waterproofing guideline

THE HOUSE LEAD-IN CONSISTS OF:

- Quadro-Sicura® SD
- Expansion resin

Supply lines	Line diameter [mm]
Water or electricity	26–50

Dimensions	
Core bore/pipe sleeve Ø	99–104 mm
Wall thicknesses	200–1200 mm

Further dimensions and versions available upon request.

Product	Dimensions	Article number
Quadro-Sicura® SD PU (packaging unit) 1 item*	26–50 mm (further dimensions possible)	2140 000 001 00
Quadro-Sicura® SD PU (packaging unit) 10 items**	26 – 50 mm (further dimensions possible)	2140 000 010 00

* including one-item 2K resin system

** including ten-item 2K resin system



HOUSE LEAD-INS

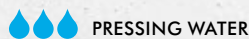


ACCESSORIES – RECOMMENDED

- 2K cartridge gun

Quadro-Sicura® MIS 40S

for buildings without basements



- Single-compartment house lead-in with injection system
- Use as angular penetration in floor slabs made of waterproof concrete
- For fibre optic cables/pipes or telecommunication lines



25
years
guarantee

PRODUCT ADVANTAGES

- Suitable for retrofitting fibre optic cable/pipes or telecommunication lines
- Sealing via resin injection using an integrated membrane system
- Quick installation
- Suitable for building renovations

TECHNICAL DETAILS

- Installation as angular penetration in floor slabs
- Leak-tight against gas and pressing water up to 1 bar
- radon proof – according to FHRK information sheet MB101
- For open design
- Integrated plug sealing
- Without additional shrinking
- Suitable for bores in floor slabs made of waterproof concrete, load class 1

THE HOUSE LEAD-IN CONSISTS OF:

- Quadro-Sicura® MIS 40S
- Wall termination sleeve
- Grid bow
- Expansion resin
- Quick-clamping device



ACCESSORIES – RECOMMENDED

- 2K cartridge gun

Supply lines	Line diameter
Fibre optic cable/pipes	2 × 5–7 mm or 1 × 9–12 mm

Dimensions	
Core bore/pipe sleeve Ø	40–50 mm
Design length	1,300 mm


Product	Line diameter	Article number
Quadro-Sicura® MIS 40S PU (packaging unit) 10 items	2 x 5 – 7 mm	2100 006 000 30
	1 x 9 – 12 mm	2100 012 000 30

Including 10 items from the 2K resin system, one quick-clamping device and 10 grid bows.



Quadro-Sicura® MIS 60S

for buildings without basements

 PRESSING WATER

- Single-compartment house lead-in with **injection system**
- Use as **angular penetration in floor slabs** made of **waterproof concrete**
- For **fibre optic cables/pipes** or **water lines**



25
years
guarantee

PRODUCT ADVANTAGES

- Suitable for retrofitting fibre optic cable/pipes or water lines
- Sealing via resin injection using an integrated membrane system
- Quick installation
- Suitable for building renovations

TECHNICAL DETAILS

- Installation as angular penetration in floor slabs
- Leak-tight against gas and pressing water up to 1 bar
- radon proof – according to FHRK information sheet MB101
- For open design
- Integrated plug sealing
- Without additional shrinking
- Suitable for bores in floor slabs made of waterproof concrete, load class I

THE HOUSE LEAD-IN CONSISTS OF:

- Quadro-Sicura® MIS 60S
- Wall termination sleeve
- Expansion resin
- Quick-clamping device
- Base for line diameter 30–34 mm
- For deviating line diameter with selectable interchangeable insert



ACCESSORIES

Grid bow (for max. line diameter of 16 mm only)

ACCESSORIES – RECOMMENDED

- 2K cartridge gun

Supply lines	Line diameter
Fibre optic/electric cables	30–34 mm or
	24–30 mm or
	18–24 mm or
	12–18 mm or
	6–12 mm or
	4 × 5–7 mm or
	3 × 10 mm
	(Please specify the diameter with your order)

Dimensions	
Core bore/pipe sleeve Ø	62–65 mm
Design length	1,300 mm

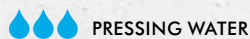
Other dimensions available upon request.

Product	Line diameter	Article number
Quadro-Sicura® MIS 60S PU (packaging unit) 10 items	for 30 – 34 mm	2110 032 000 30
	for 24 – 30 mm	2110 025 000 30
	for 18 – 24 mm	2110 020 000 30
	for 12 – 18 mm	2110 015 000 30
	for 6 – 12 mm	2110 012 000 30
	for 4 x 5 – 7 mm	2110 007 000 30
	for 3 x 10 mm	2110 010 000 30

Including 10 items from the 2K resin system, one quick-clamping device.

Quadro-Sicura® MIS 90S

for buildings without basements



- Single-compartment house lead-in with **injection system**
- Use as **angular penetration in floor slabs made of waterproof concrete**
- For **all cable types** or **water lines**



25
years
guarantee

PRODUCT ADVANTAGES

- Allows for the simultaneous routing of electricity or water and telecommunications
- Sealing via resin injection using an integrated membrane system
- Quick installation
- Suitable for building renovations

TECHNICAL DETAILS

- Installation as angular penetration in floor slabs
- Leak-tight against gas and pressing water up to 1 bar
- radon proof – according to FHRK information sheet MB101
- For open design
- For the most common pipe and cable diameters
- Integrated plug sealing
- Without additional shrinking
- Suitable for bores in floor slabs made of waterproof concrete, load class 1

THE HOUSE LEAD-IN CONSISTS OF:

- Quadro-Sicura® MIS 90S
- Wall termination sleeve
- Expansion resin
- Quick-clamping device
- Selectable collar plugs



ACCESSORIES – RECOMMENDED

- 2K cartridge gun

Supply lines	Line diameter
Water, electricity or telecommunications	1 × 24–40 mm or 3 × 7–12 mm or 1 × 24–52 mm or 1 × 14–21 mm or 3 × 7–13 mm or 1 × 5–13 mm (Please specify the diameter with your order)

Dimensions	
Core bore/pipe sleeve Ø	92–102 mm
Design length	1,300 mm

Further dimensions and versions available upon request.

Product	Line diameter	Article number
Quadro-Sicura® MIS 90S PU (packaging unit) 6 items	1 x 24 – 40 mm and 3 x 7 – 12 mm	2120 040 000 30
	1 x 24 – 52 mm	2120 050 000 30
	1 x 14 – 21 mm, 3 x 7 – 13 mm and 1 x 5 – 13 mm	2120 020 000 30

Including 6 items from the 2K resin system, one quick-clamping device.

Accessories for single and multi-compartment house lead-ins

Building service sealing (building inside)

For sealing lines

Supply line	Article number
Water (32 mm. 40 mm. 50 mm)	2990 000 010 00
Water (63 mm)	2990 000 016 00
Energy (25 – 53 mm)	2990 000 011 00
Telecom. (2 x 5 – 7 mm. 4 x 7 – 13 mm. 1 x 13 – 21 mm)	2990 000 012 00
Fibre optic cables (2 x 5 – 7 mm. 2 x 7 – 13 mm. 1 x 12 – 16 mm and 1 x 23 – 40 mm)	2990 000 025 00
Extension set for RMA and Schuck gas. DN 25	2998 0704 13 90

Sealing elements for other versions available upon request



Jacket pipe end plug (2704)

For sealing the jacket pipes and lines

Product	DN	Article number
Set of jacket pipe end plugs for G/W/E/T (2704) for jacket pipes or casings of the multi-compartment duct system (with gas. to prevent ingress of sand; gas permeable)	75/90	299 0704 090 50
End plug for water/energy for sealing OD 75 mm or OD 90 mm jacket pipes on pipes with OD 25 – 63 mm	75/90	299 0704 910 50
End plug for telecommunications for sealing OD 75 mm or OD 90 mm jacket pipes on 2 x 5 – 7 mm, 4 x 7 – 13 mm and 1 x 13 – 21 mm pipes	75/90	299 0704 912 50
End plug for fibre optic cables for sealing OD 75 mm or OD 90 mm jacket pipes on 2 x 5 – 7 mm, 3 x 7-13 mm, 12 – 16 mm and 23 – 40 mm pipes	75/90	299 0704 925 50
Ring plug for gas for termination in jacket pipe ID 68 mm or ID 78 mm on 1", 1 1/4", 1 1/2" or 2" pipes (gas-permeable, segments can be adapted on site)	–	299 0704 916 50
Jacket pipe end plug for sealing jacket pipe OD 125 to pipe with OD 75, 90 and 110 mm (segments can be customised on site)	125	2990 704 125 00
End plug for ID 90, 100 or 110 mm for cables 1 x 18 –65 mm, 2 x 5 –10 mm, 2 x 12 –16 mm and 2 x 16 –20 mm	–	2990 704 186 50



Jacket pipe end plug (2704) DN 125

Double sleeve (2707)

For connecting and extending the cable protection pipes 2775
(Not suitable for bend-resistant jacket pipes)

Product	DN	Article number
Double sleeves including P-seal ring	75	2990 707 075 00
	100	2990 707 100 00



Connecting sleeve (2726)

For connecting and extending the bend-resistant jacket pipes

Product	DN	Article number
Connecting sleeve for connection on both sides to OD 75 mm or OD 90 mm	75/90	2990 726 090 00
Connecting sleeve for connection on both sides to OD 110 mm or OD 125 mm	125	2990 726 125 00



Connecting sleeve (2726) DN 75/90

Transition collar UMS-75-90/102-125

For connecting and extending jacket pipes

Product	DN	Article number
Transition collar from OD 75 mm or OD 90 mm to OD 110 mm or OD 125 mm	75/90 – 110/125	299 0709 125 00



Jacket pipes (2775)

Product	DN	Article number
Flexible jacket pipes, 50 metre roll	75 black	2990 775 675 00
	75 blue	2990 775 475 00
	75 yellow	2990 775 375 00
	75 red	2990 775 575 00
	110 black	2990 775 611 00
	110 blue	2990 775 411 00
	110 yellow	2990 775 311 00
	110 red	2990 775 511 00



Bend-resistant jacket pipes (2776)

Product	DN	Article number
Bend-resistant jacket pipes, 25 m	90	2990 776 690 00



Lubricant (2780)

Product	Quantity	Article number
Lubricant (tube)	250 ml	2990 780 000 00
	30 ml	2990 780 030 00



Lubricant (2780)
250 ml tube

Threading tips (2711)

Product	DN	Article number
Threading tips (for easier routing of lines)	25	2990 711 025 00
	32	2990 711 032 00
	40	2990 711 040 00



Insulating washer for perimeter insulation (2725)

Product	DN	Article number
Insulating washer for perimeter insulation (2725), Ø 180 mm, insulation thickness 50 mm	100	2990 725 100 00
Insulating washer for perimeter insulation (2725), Ø 320 mm, insulation thickness 50 mm	200	2990 725 200 00
Insulating washer for perimeter insulation (2725), Ø 440 mm, insulation thickness 50 mm	300	2990 725 300 00



Curaflex® C/2/SD/6/M or C/2/SD/5/M

Outer seal with fixed/loose flange in accordance with DIN 18535

Product	Type
Outer seal with fixed/loose flange for installation of the Quadro-Secura® Nova in accordance with DIN 18195/DIN 18533/ DIN 18535. Material: GGV triple corrosion protection. Other materials available upon request	Curaflex® C/2/SD/6/M, against pressing water
	Curaflex® C/2/SD/5/M, against non-pressing water



Quadro-Secura® A/2/SD/5/BP or Quadro-Secura® A/2/SD/5/R4 for buildings without basements

Outer seal with fixed/loose flange in accordance with DIN 18533

Product	Type	Article number
Fixed/loose flange for installing the Quadro-Secura® Nova BP+ E-BP and Basic R4+ in accordance with DIN 18533. Against non-pressing water. Material: GGV triple corrosion protection. Other materials available upon request.	Quadro-Secura® A/2/SD/5/R4+	2990 850 540 00
	Quadro-Secura® A/2/SD/5/E-BP	-

Gas house lead-in combinations*

Corner/penetration ball valve (RMA; type KETH-S/PE) (standard DN 25, 1")
Inner thread
Control screw
Flange
AVR valve with inner thread
Corner/penetration ball valve (Schuck; type HSP) (standard DN 25, 1")
Inner thread
Control screw
Flange

*Excluded from the 25-year DOYMA warranty.

Accessories for house lead-inss with injection system

Product	Article number
2K cartridge gun	2190 701 000 00

Tangit M3000

Produkt	Artikelnummer
Tangit 150 ml VPE 10 items	2990 701 150 01
Tangit 300 ml VPE 6 items.	2990 701 300 06



RMA gas duct system, type KETH-S/PE



Schuck gas duct system, type HSP...



Cartridge gun



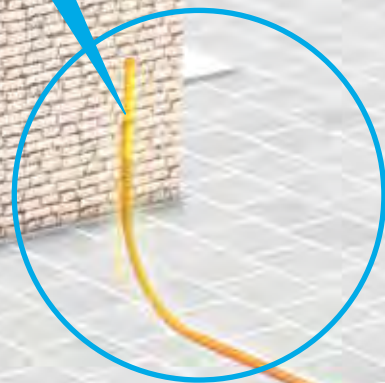
Quadro-Sicura® O.Con 1

THE BUILDING SERVICES OUTLETS
FROM DOYMA



 **CONNY**

READY FOR YOUR PROJECT





THE DOYMA BUILDING SERVICES OUTLETS

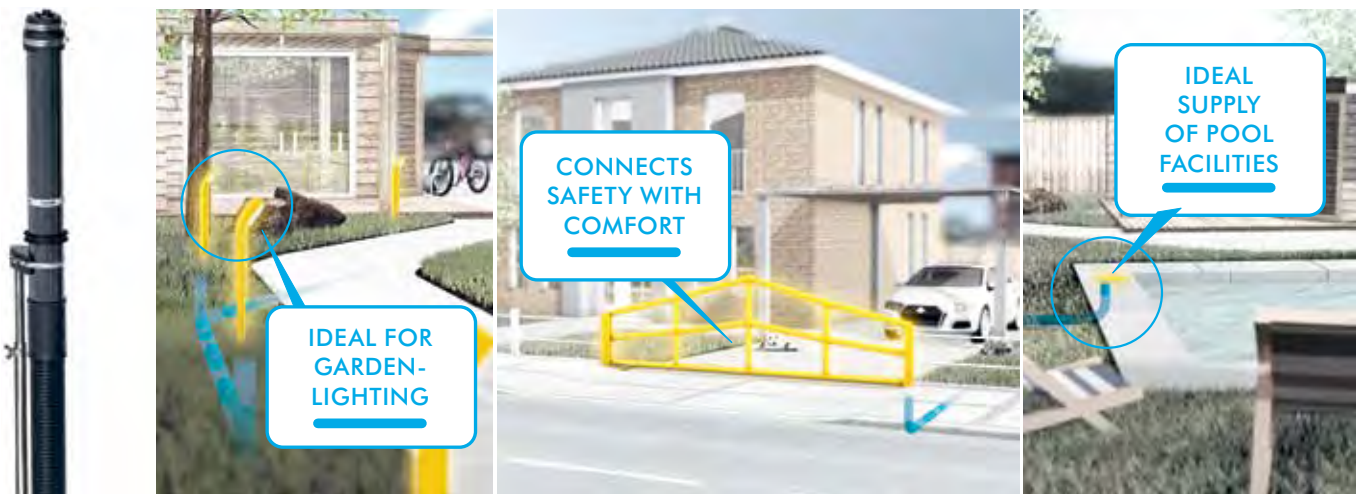
Once installed, ready for your project

CONNY

Conny makes it easy for builders!

Building a house is not the end of the story. Afterwards, there is usually garden design and an extension.

In most cases, this requires supply lines, e.g. to operate the wallbox or to supply the outdoor pool. Until now, builders have had to carry out costly conversion measures to implement these projects. This does not have to be the case. Those who rely on the new DOYMA house design already in the construction phase can devote themselves to all projects later on without any worries.



CONNY for the garden

Garden lighting simply and quickly, smart security systems or the supply of pool facilities: The applications for a DOYMA house installation are extremely versatile.



flexible

individual


safe

comfortable



Quadro-Sicura® O.Con 1

for buildings without basements

 PRESSING WATER

- Single-compartment house outlet with as **version simple**
- Use in **structures yet to be built of WU concrete**
- Hausausführung für **for all types of cables or water pipes**
- Ideal for connections **in the garden or outdoors**

25
years
guarantee



PRODUCT ADVANTAGES

- Later insertion of pipes for use in garden or outdoor areas.
- No drilling or the like required on the building for later laying of lines
- Various sealing options for different lines possible
- Quick installation

TECHNICAL DETAILS

- Leak-tight against gas and pressing water up to 0,5 bar
- optional installation according to DIN 18533 possible
- suitable for immediate installation in the floor slab or for later installation in a recess in the floor slab floor slab
- connection possibility of flexible casing pipes DN 75
- End plug is pre-fitted with gas- and pressure-water-tight blanking plugs
- optionally available with 3 m, 6 m, 10 m or 15 m flexible outer casing available
- for pipes $\varnothing \geq 40$ mm we recommend the use of Quadro-Sicura® E-BP-R Max.

THE HOUSE LEAD-IN CONSISTS OF:

- Plastic pipe sleeve incl. blind cover
- Connection sleeve for connecting pipe sleeve/casing pipe
- End plug for sealing the pipe

Quadro-Sicura® O.Con 1	Pipe/cable Ø [mm]
XLWL end plug	Outer diameter: 2 x 5-7 mm, 2 x 7-13 mm, 1 x 12-16 mm, 1 x 23-40 mm

Further dimensions and designs on request.



ACCESSORIES – RECOMMENDED

- flexible casing pipe DN 75
- height-adjustable installation device
- End plug XLWL for ground-side line-sealing
- Sealing sleeve for connection of a sealing membrane



Product	Plastic pipe sleeve [DN]	Length of jacket pipe DN 75	Article number
Quadro-Sicura® O.Con 1	75	-	2285 000 000 00
		3 metre	2285 000 000 03
		6 metre	2285 000 000 06
		10 metre	2285 000 000 01
		15 metre	2285 000 000 05

Accessories

Product	Article number
Height adjustable set-up device (2799)	2990 799 999 00
XLWL end plug for earth-side cable sealing (2704)	2990 704 925 50
Sealing sleeve for connecting a waterproofing membrane to the floor slab (2718)	2990 718 075 00
Flexible casing pipe DN 75, black, 50 metre roll (2775)	2990 775 675 00
Retaining plate for connecting two pipe sleeves	2990 339 814 0 0

Height adjustable Set-up device (2799)

Retaining plate for connecting two pipe sleeves

XLWL end plug (2704) for earth-side cable sealing


Sealing sleeve (2718) for connecting a waterproofing membrane to the floor slab

Flexible casing pipe DN 75 (2775)

Subject to technical changes. Some illustrations include accessories. R-WT-1-514-02/2024

Quadro-Secura® O.Con 2

for buildings without basements

 PRESSING WATER

- Single-compartment house outlet with as **version double**
- Use in **structures yet to be built of WU concrete**
- Hausausführung für **for all types of cables or water pipes**
- Ideal for connections **in the garden or outdoors**

25
years
guarantee



PRODUCT ADVANTAGES

- Later insertion of pipes for use in garden or outdoor areas.
- No drilling or the like required on the building for later laying of lines
- Various sealing options for different lines possible
- Quick installation

TECHNICAL DETAILS

- Leak-tight against gas and pressing water up to 0,5 bar
- optional installation according to DIN 18533 possible
- suitable for immediate installation in the floor slab or for later installation in a recess in the floor slab floor slab
- connection possibility of flexible casing pipes DN 75
- End plug is pre-fitted with gas- and pressure-water-tight blanking plugs
- optionally available with 3 m, 6 m, 10 m or 15 m flexible outer casing available
- for pipes $\varnothing \geq 40$ mm we recommend the use of Quadro-Secura® E-BP-R Max.

THE HOUSE LEAD-IN CONSISTS OF:

- Plastic pipe sleeve incl. blind cover
- Connection sleeve for connecting pipe sleeve/casing pipe
- End plug for sealing the pipe
- Retaining plate for connecting two pipe sleeves

Quadro-Secura® O.Con 2	Pipe/cable Ø [mm]
XLWL end plug	Outer diameter: 2 x 5-7 mm, 2 x 7-13 mm, 1 x 12-16 mm, 1 x 23-40 mm

Further dimensions and designs on request.



ACCESSORIES – RECOMMENDED

- flexible casing pipe DN 75
- height-adjustable installation device
- End plug XLWL for ground-side line-sealing
- Sealing sleeve for connection of a sealing membrane



Product	Plastic pipe sleeve [DN]	Length of jacket pipe DN 75	Article number
Quadro-Secura® O.Con 2	75	-	2285 200 000 00
		3 metre	2285 200 000 03
		6 metre	2285 200 000 06
		10 metre	2285 200 000 01
		15 metre	2285 200 000 05

Accessories

Product	Article number
Height adjustable set-up device (2799)	2990 319 971 00
XLWL end plug for earth-side cable sealing (2704)	2990 704 925 50
Sealing sleeve for connecting a waterproofing membrane to the floor slab (2718)	2990 718 075 00
Flexible casing pipe DN 75, black, 50 metre roll (2775)	2990 775 675 00

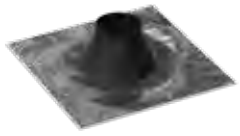
Height adjustable
Set-up device
(2799)



XLWL end plug (2704)
for earth-side cable sealing



Sealing sleeve (2718)
for connecting a waterproofing
membrane to the floor slab



Flexible casing pipe DN 75
(2775)



Subject to technical changes. Some illustrations include accessories. R-WT-1-514-02/2024

Approvals, test reports, expert opinions

Quadro-Secura® house lead-ins

LEAK, PULL-OUT, TORSION, HTB TEST

Sequ. no.	Testing institute	Standard	Test result classification	Product
1	DVGW Reg. no.: DV-4543BT 0105	DVGW VP601	issued	Quadro-Secura® E
2	DVGW Reg. no.: DG-4540BT 0396			Quadro-Secura® E-S
3	DVGW Reg. no.: DG-4541 CU 0143			Quadro-Secura® Quick/G
4	Reg. no.: DG-4541 DL 0381			Quadro-Secura® Nova 1, Quadro-Secura® Nova 1/breit, Quadro-Secura® Nova 2, Quadro-Secura® Nova 2/breit, Quadro-Secura® Nova R1, Quadro-Secura® Nova R2, Quadro-Secura® Nova R3, Quadro-Secura® Nova R4

RADON TESTS

Sequ. no.	Testing institute	Test content	Test result classification	Product
1	IAF 29/06/2017; Quadro-Secura® Nova 2	Materials testing for radon diffusion coefficient	R > 3, radon-tight	Quadro-Secura® Nova 1, Quadro-Secura® Nova 1-M, Quadro-Secura® 1/breit, Quadro-Secura® Nova2-M, Quadro-Secura® Nova 2/breit
2	IAF 08/08/2017; Quadro-Secura® E2	Materials testing for radon diffusion coefficient	R > 3, radon-tight	Quadro-Secura® E1, Quadro-Secura® E1/breit, Quadro-Secura® E2/breit
3	IAF 26/06/2019; Quadro-Secura® Quick G	Materials testing for radon diffusion coefficient	R > 3, radon-tight	Quadro-Secura® Quick H, Quadro-Secura® Quick X, Quadro-Secura® Quick O
4	IAF 26.06.2019 / Curaflex® Quick In A	Materials testing for radon function test	R > 3, radon-tight	Curaflex® A, Curaflex® C, Curaflex® B, Curaflex® D (gasket inserts used with Quadro-Secura® E-S)

DVGW: German Technical and Scientific Association for Gas and Water, Bonn
IAF: IAF – Radioökologie GmbH, Radeberg
SVGW: Swiss Technical and Scientific Association for Gas and Water, Zurich



TEST CERTIFICATES PROVIDED UPON REQUEST



25 years guarantee

on ALL DOYMA products.

CERTIFICATE

In addition to the legal rights of the customer, DOYMA will guarantee the proper functioning of your DOYMA product for 25 years from the date of purchase. The cut-off date of validity is 01/01/2007. If the DOYMA product nevertheless fails during this time due to a deficiency of the product and you suffer consequential damage as a result of the defect, DOYMA will:

- Replace the defective DOYMA product.
- Reimburse the necessary installation and removal costs up to a maximum amount of €10,000 upon prior consultation with DOYMA. DOYMA reserves the right to carry out the necessary work itself or have it carried out by a reliable third party, within the maximum amount.
- Reimburse up to a maximum sum of €100,000 in each case any damage to your property resulting from a deficiency of the DOYMA product, especially damage caused by water ingress, and the necessary repair work, especially any required drying, painting and masonry work, upon prior agreement with DOYMA, to the extent that the damages were foreseeable for DOYMA. DOYMA reserves the right to carry out the work required to eliminate the damage or have the work carried out by a reliable third party.

This warranty is valid only in the event that the DOYMA product is actually defective; it is not valid where the failure of the DOYMA product can be attributed to the fact that the product was installed or used contrary to generally recognised standards of good practice or contrary to our installation and usage guidelines. The warranty shall also not be applicable if the failure of the DOYMA product can be attributed to product damage caused by you. If you cannot refute a reasoned objection from DOYMA that one of the aforementioned grounds of exclusion is applicable, the warranty shall be considered void.

The warranty can only be asserted upon presentation of the invoice for the contested DOYMA product. Without this invoice it will not be possible to assert any rights from this warranty.

Please send this invoice together with your complaint to: **DOYMA GmbH & Co**
Industriestraße 43-57
28876 Oyten, Germany
Fax: +49 (0)4207 9166 199

The scope of validity of this warranty is limited to the territory of the European Union, the United Kingdom, Norway and Switzerland. If you purchased or used the DOYMA product outside the European Union, the United Kingdom, Norway or Switzerland, this warranty is not valid. In this case the customer is referred to applicable legal provisions. For all legal relationships between DOYMA and the customer under this warranty agreement, only the law applicable to the legal relationship of domestic parties at our domicile (German law) shall apply under exclusion of foreign law and of the UN Convention on the International Sale of Goods (CISG). For all disputes arising from this warranty, the exclusive place of jurisdiction is Oyten, Federal Republic of Germany.

Glossary

PRESSING WATER	Water exerting hydrostatic pressure on the seal. <ul style="list-style-type: none">• Corresponds to load class 1 as per the Waterproofing guideline• Corresponds to water exposure class W2-E 'Pressing water' as per DIN 18533
EASY FIX SYSTEM	A solution that achieves a secure hold of pipes/casings in the wall in no time. Foam is poured in and a practical catch ensures a permanent hold.
GAS-TIGHT	Describes the following property of a gasket insert: tight against all gases which do not attack the material (e.g. air, nitrogen, noble gases, etc.)
ITL	(Integrated Torque Limiter) Always guarantees the correct torque during tightening. Nuts which were specially developed for this purpose will detach quickly and reliably at a defined torque.
KMB/PMBC	Plastic modified bitumen coating
WET ROOMS	Interior spaces where water accrues in such an amount that a floor drain is required for its removal. Bathrooms in residential buildings without a floor drain are not considered wet rooms. These are referred to as humid rooms.
NOMINAL WIDTH	(DN) A measured size that for DOYMA products corresponds to the actual inner diameter.
NON-PRESSING WATER	Does not exert any pressure on the seal, or only temporarily exerts slight hydrostatic pressure. <ul style="list-style-type: none">• Corresponds to load class 2 as per the Waterproofing guideline• Corresponds to the water exposure class W1-E 'Soil moisture and non-pressing water' and W3-E 'Non-pressing water on earth-covered ceilings' as per DIN 18533
SPECIAL FIBRE CEMENT PIPE SLEEVES	(SFC) Consists of cement reinforced with artificial fibres. A special characteristic of this material is that it has nearly the same coefficient of expansion as concrete.
BLACK TANK	Structures that are not watertight must be protected against penetrating water through a seal. This seal comes in the form of a membrane created using a filler compound or a liquid, thus creating a skin-like seal. Since the material bitumen plays an important role here, these seals are also referred to as 'black tank'.
TURN STOP SYSTEM	Guarantees always the right torque during tightening. Specially developed system introduces noticeable resistance when tightening screws once the right torque is reached.
WHITE TANK	Watertight or water-impermeable structures do not require additional 'skin' sealing. Above all, this includes structures made of waterproof reinforced concrete (WP concrete). These building seals are also referred to as 'white tank'.
WP CONCRETE	Waterproof or water-impermeable concrete
PACKINGS	According to DIN 18533, single-layered, loosely laid tanking membranes must be enclosed with permanently compatible packings arranged on both sides. The packings may be the same material as the tanking membrane or be made of material-compatible elastomers.

Terms and conditions for returns

PREREQUISITE

1. Goods to be returned within max. six months of the date of purchase.
2. Returns must be sent to DOYMA as 'CARRIAGE PAID'.
3. Goods must be in perfect condition.

TERMS AND CONDITIONS

1. Returns **must be reported in writing** and confirmed in writing by DOYMA – returns that are not reported first will either be returned to the sender (carriage to be paid by you) or will be subject to an administrative fee of EUR 25 (in addition to the incurred costs of the return itself).
2. Advance freight charges – including pro rata – will be calculated.
3. You must state your VAT number.

CHARGES FOR PROCESSING RETURNS

A processing fee of min. €75.00 will be charged to cover the cost of goods handling, quality control, reworking and restoration of saleability in current form, packaging, etc. The listed costs apply to standard designs as per the applicable price list for the products in question.

PROCESSING FEES FOR THE PRODUCT RANGES

Product ranges	Product/type	Dimensions	Costs
Curaflex®	A, C, 3000, Nova Uno	Up to DN 350	25%
		Up to DN 500	35%
Quadro-Secura®*	—		25%
Curaflex®*	—		35%
DOYMAfix®**	—		30%
UGA/HKD/link chains*	—		50%

* Goods manufactured to order are excluded ** excl. expansion foam

NO RETURNS ACCEPTED

- For any product where a delivery note/order confirmation or invoice number has not been specified
- For custom solutions
- For products with a shelf life, such as varnish, filler, lubricants, expansion foam
- For cable conduits, gas house lead-ins, MIS, ADS, Quick-Types and the like
- For any types or dimensions not mentioned

Please send your written query to Export@doyma.de.

Subject to changes. Valid from 01/01/2024

General Terms and Conditions

§ 1 General/scope of validity

- (1) Our terms and conditions of sale apply exclusively. They apply to all our offers, sales, deliveries and services. Insofar as the purchaser was not able to take note of them at the time the contract was concluded, they shall nevertheless apply if the purchaser was aware of or must have been aware of them from previous business transactions.
- (2) We do not recognise any terms and conditions of business of the purchaser that contradict or deviate from our terms and conditions of sale. If we carry out the delivery or service required by us in knowledge of the purchaser's terms and conditions of business, we also do not acknowledge such terms and conditions of the purchaser which are not contradicted by our terms and conditions of sale.
- (3) Our terms and conditions of sale shall only apply to commercial entities within the meaning of § 310 of the German Civil Code (BGB), i.e. not if the customer's order cannot be attributed to its commercial or self-employed professional activity (consumer in accordance with § 13 BGB).
- (4) Verbal agreements have not been made. All future amendments to this contract must be made in writing or in text form in accordance with § 126b BGB (in particular by fax or email); this also applies to any agreement to waive the requirement for written arrangements. Our sales representatives are not authorised to waive this requirement verbally. Changes will therefore only become effective when they have been formally confirmed by the Management Board or Sales Management.

§ 2 Offer – conclusion of contract

- (1) Our offers are subject to change without notice, unless otherwise specified.
- (2) If the purchaser's order is an offer to conclude a contract, we may accept this offer within 10 days.
- (3) We reserve all property rights and copyrights to illustrations, drawings, calculations and other documents. This applies in particular to such written documents which are designated as 'confidential'. Before passing them on to third parties, the purchaser must obtain our express consent in writing or text form in accordance with § 126b BGB (in particular by fax or email).

§ 3 Prices – terms of payment

- (1) Unless otherwise agreed, all prices are quoted ex-warehouse or ex-works including the packaging. From a gross goods value of EUR 1250.00, our prices include free delivery within Germany. Freight, insurance, postage and all other agreed special or ancillary services will be charged additionally at reasonable prices. This shall also apply if the purchaser orders special packaging or shipment.
- (2) Our employees are only entitled to collect payment if this has been confirmed in writing to the purchaser by our Management beforehand.
- (3) Payment by the purchaser is due immediately. The purchaser shall be notified that it is in default of payment at the latest within 30 days upon receipt of the invoice. If the purchaser is late with payment, it is obliged to reimburse a fixed administrative fee of EUR 1.50 for each (further) reminder.
- (4) The purchaser can only offset this if its counterclaims are legally established, undisputed or acknowledged by us.
- (5) We are entitled to exercise a right of retention on account of all claims arising from the business relationship with the purchaser.

§ 4 Delivery – delivery time

- (1) The commencement of the delivery period stated by us presupposes that all technical questions have been clarified and that the purchaser has fulfilled its obligations in a timely and proper manner. The defence of non-performance of the contract remains reserved.
- (2) In the event of force majeure or disruption of operations occurring at our premises or our suppliers' premises, e.g. due to riots, strikes or lockouts, which temporarily prevent us from delivering the object of purchase on the agreed date or within the agreed deadlines at no fault of our own, the delivery times or delivery periods specified by us will be postponed for the duration of the disruption in performance caused by these circumstances. If a corresponding disturbance leads to a delay in performance of more than two months, the purchaser shall be entitled to withdraw from the contract.
- (3) If the object of the contract is not a concrete object, we are obliged to deliver an object of average quality and type from the stipulated category. This obligation to procure such an item is limited to the stock in our warehouse or goods from our production plant. If we do not produce the stipulated goods or if we have not yet received them, we reserve the right to have our supplier take care of delivery. This shall apply mutatis mutandis in the event of a special purchase of goods which we have not yet received as property. We shall not be liable for any non-delivery by our supplier for which we are not responsible. This shall also apply in the event of a delay in delivery by our supplier for which we are not responsible.
- (4) The manufacturer reserves the right to make design or shape changes, deviations in colour and changes to the scope of delivery during the delivery period, provided that the object of purchase is not significantly changed and the change is reasonable for the purchaser.
- (5) We reserve the right to charge a surcharge for very small quantities.

§ 5 Delay in delivery

- (1) We are liable for delays in accordance with legal provisions, providing the underlying purchase contract is a fixed transaction within the meaning of §§ 361 BGB and 376 of the German Commercial Code (HGB);
 - the purchaser is no longer interested in the further performance of the contract following a delay in delivery for which we are at fault;
 - the delay in delivery is the result of a wilful or grossly negligent breach of contract on our part, or on the part of our representatives or vicarious agents.
- (2) We are liable in accordance with legal provisions, but said liability is limited to foreseeable, typical damages if
 - the delay in delivery is the result of a wilful or grossly negligent breach of contract on our part;
 - the delay in delivery is the result of a slightly negligent breach on our part of an essential contractual obligation.
- (3) If our delay in delivery is only the result of a breach of a non-essential contractual obligation, for which we are at fault, the purchaser's claim is limited to 20% of the delivery value.

§ 6 Endangerment of the performance/insolvency

- (1) If it becomes apparent to us after conclusion of the contract that the (further) fulfilment of the contract is endangered due to a lack of performance by the purchaser, we shall be entitled to refuse the provision of advance performance under this contract until the corresponding consideration has been effected by the purchaser or security has been provided for it.
- (2) We shall be entitled to withdraw from the contract or to terminate it without notice if, despite a reasonable grace period for the provision of the corresponding counter-performance, the purchaser fails to provide the security on a performance upon counter-performance basis.
- (3) If the purchaser is insolvent or over-indebted, the opening of insolvency or composition proceedings is applied for or opened against its assets, we are entitled to withdraw from the contract or to terminate it without setting a grace period.
- (4) If we terminate or withdraw from the contract in accordance with paragraphs 2 or 3, we shall be entitled to claim damages from the purchaser instead of performance or reimbursement of expenses.

§ 7 Acceptance

- (1) The purchaser is obliged to carry out the actions necessary for our fulfilment of the contract, in particular to accept the goods. If it violates this obligation and cannot prove that it is not at fault, it shall be obliged to reimburse us for the damage incurred in this respect, in particular additional expenses. We reserve the right to make further claims.
- (2) If the purchaser defaults on acceptance of the object of purchase for more than 14 days from receipt of the notification of readiness for delivery or proper first delivery by us, we may grant the purchaser a grace period of 14 days with the declaration that we will reject acceptance of the object of purchase after expiry of this period.

After this grace period has elapsed, we shall be entitled to withdraw from the purchase contract by means of a written declaration or to demand performance for non-performance. The setting of a grace period is not necessary if the purchaser seriously and definitively refuses acceptance or is obviously unable to pay the purchase price even if a grace period is granted. In this case, we are entitled to demand lump-sum compensation of 10% of the agreed purchase price for lost profit. However, the purchaser reserves the right to prove that we have suffered no damages or less than that lump-sum amount. We also reserve the right to assert and produce evidence of higher damages.

§ 8 Shipment – transfer of risk

- (1) Unless otherwise specified in the order confirmation, delivery 'ex-warehouse' or 'ex-works', i.e. EXW Oytan (Incoterms 2020), shall be agreed upon.
- (2) We will not take back any packaging other than pallets and lattice boxes. The purchaser has the opportunity to have our packaging material disposed of in accordance with our agreement through Interseroh.
- (3) Exchange pallets and lattice boxes which are not exchanged will be invoiced. Exchange pallets will be charged at net EUR 16.00 and box pallets at EUR 132.50 each.
- (4) We will only take out transport insurance if this is contractually agreed. The corresponding costs shall be borne by the purchaser.
- (5) We shall be entitled to make partial deliveries to a reasonable extent.

§ 9 General rules regarding defects of the purchased items

- (1) All claims of the purchaser arising from defects depend on the fulfilment of the purchaser's obligations to inspect and report defects in accordance with § 377 HGB.
- (2) Advertising statements of third parties are only binding for us if they have been approved by the manufacturer or us.
- (3) If the purchaser fails to fully comply with our or the manufacturer's operating or maintenance instructions, or the purchaser makes changes to the products, replaces parts or uses consumables that do not correspond to the original specifications, the warranty shall be void if the purchaser does not refute a substantiated claim that at least one of these circumstances has caused the defect.
- (4) Moreover, our warranty terms and conditions shall apply.

§ 10 Subsequent performance

- (1) If the item is defective, the purchaser shall initially only have the right to demand subsequent performance from us, provided that the subsequent performance is not unreasonable for us or we have seriously and finally refused it.
- (2) Subsequent performance may consist of a new delivery of the item or rectification (repair) by us or a third party engaged by us. In each case, we shall be obliged to bear all expenses necessary for the purpose of remedying the defect, in particular transport, travel, labour and material costs, insofar as these have not been increased by the fact that the object of purchase has been brought to a place other than the place of performance. In case of a new delivery, the purchaser must bear the costs for a dismantling and installation of the purchased item if the purchaser is a commercial entity.
- (3) We shall be entitled to choose between the various types of subsequent performance at our reasonable discretion (§ 315 BGB). In any case, we shall be entitled to refuse a type of subsequent performance selected by the purchaser if the type of subsequent performance results in 15% lower costs for us. The remaining residual value of the item returned in the case of a new delivery shall be credited against this.

- (4) We shall be entitled to provide the subsequent performance dependent on an appropriate share of the purchase price having been paid. We shall also be entitled to refuse subsequent performance if the costs thereof exceed the stipulated purchase price. If we are at fault for the defect, or if we have officially guaranteed the absence of the defect, we can only refuse subsequent performance if its costs exceed the stipulated purchase price by one third. The remaining residual value of the item returned in the case of a new delivery shall be credited against this.
- (5) Any subsequent performance by us shall be conducted without recognition of a legal obligation, unless we have expressly acknowledged the defect. Our technicians or fitters are not authorised to acknowledge a defect.
- (6) If a concrete object is the subject matter of this contract, we are entitled to repair it, if a repair by us or a third party engaged by us is possible. We shall also be entitled to subsequently deliver an item other than the stipulated item if it is just as suitable for the purchaser's contractual purposes as the stipulated item. If used goods are the subject matter of this contract, the purchaser (if it is a commercial entity) shall be obliged to inspect them immediately for visible defects. If the purchaser does not report such defects within three weeks of handover, the purchaser shall not be entitled to assert any rights based on identifiable defects, if the purchaser does not prove that the defect already existed at the time of handover.

§ 11 Additional rights in case of defects

- (1) If the subsequent performance pursuant to § 440 BGB has failed, the purchaser may assert the rights from § 437 No. 2 BGB (rescission or reduction) or § 437 No. 3 BGB (compensation for damages or reimbursement of expenses) at its discretion and in compliance with the provisions of §§ 10, 11, 12 and 13 of these General Terms and Conditions of Sale.
- (2) The purchaser is not entitled to claim damages in accordance with § 280 Para. 1 BGB in the case of insignificant defects of the goods. The right to a reduction of the purchase price is also excluded in the case of minor defects.

§ 12 Statute of limitation for claims arising from defects

- (1) The purchaser's claims arising from defects of the item shall lapse after five years upon delivery of the item. This shall also apply to the purchaser's rights to compensation for damages or damages in lieu of performance, including those for all damages to other legal assets of the purchaser which have arisen through the defect, unless this concerns damage to the purchaser's life, body or health, or unless we are responsible for the defect due to wilful intent or gross negligence.
- (2) If the subject matter of this contract also includes rights, the limitation period for the purchaser's claims arising from defects shall commence with the agreement of the contracting parties on the transfer of these rights to the purchaser.

§ 13 Cancellation and compensation for damages instead of performance due to a breach of duty

- (1) A period of time set by the purchaser for subsequent performance must be at least 14 days, unless the subsequent performance must be provided within a shorter period of time for special reasons.
- (2) Even after the unsuccessful expiry of a reasonable grace period, the purchaser shall only have the right to withdraw from the contract or to demand compensation for damages instead of performance if it has announced this beforehand when setting the grace period or any other reasonable period of time.
- (3) If the purchaser sets multiple deadlines for subsequent performance, the purchaser shall not be entitled to withdraw from the contract or demand compensation for damages in lieu of performance during the respective time period.

§ 14 Returns

- (1) Returns and/or exchange of defect-free goods is only possible if we have expressly agreed to this. There is no legal obligation to take back the goods. Return deliveries and return shipments intended for exchange must be delivered to our registered office as quickly as possible at the expense of the purchaser, including any advance freight charges paid by us, and the delivery note or invoice number must be specified. The purchaser shall bear the risk for this until the goods are accepted. We are entitled to charge administrative fees or to refuse the return. The minimum processing fee for returns is EUR 75.00 net. If special expenses are necessary in order to identify the returned goods or restore them to perfect condition (repairs, cleaning, etc.), we are entitled to charge any arising costs to the purchaser.
- (2) The purchaser is obliged to give us advance notice of any returns. If the purchaser violates this obligation, it shall be liable for any damage resulting from this. We reserve the right to return unreported return deliveries unprocessed and at the purchaser's expense, or even refuse acceptance of such deliveries. Returns must be reported in writing or in text form in accordance with § 126b BGB (in particular by fax or email) and confirmed in writing by DOYMA – returns that are not reported first will either be returned to the sender (carriage to be paid by you) or will be subject to an administrative fee of EUR 25 (in addition to the incurred costs of the return itself).

§ 15 Liability

- (1) We shall not be liable for slightly negligent breaches of duty, insofar as these do not concern essential contractual obligations, or if we have assumed a guarantee for the fulfilment of this obligation or for the success which did not occur due to the breach of duty. This also applies to corresponding actions of our subsidiaries and vicarious agents.
- (2) This exclusion of liability shall not apply if the damage consists of injury to life, limb or health or if claims arising from the German Product Liability Act or claims arising from data protection regulations (in particular the EU General Data Protection Regulation, the German Federal Data Protection Act) are affected.
- (3) We have business liability and product liability insurance. Insofar as this occurs, the exclusion of liability in accordance with Section 1 of this paragraph does not apply with the provision that the claim for damages is not limited to a maximum total of EUR 1,500,000 in each individual case.
- (4) Any claims for damages on the part of the purchaser arising from a grossly negligent breach of duty or from a grossly negligent act on our part shall be limited to the damage foreseeable for us.
- (5) The Sections 1 to 4 of this paragraph shall apply mutatis mutandis to offences committed by our employees and vicarious agents.

§ 16 Retention of title

- (1) We reserve title to the purchased item until all payments arising from the delivery contract have been received. In the event of a breach of contract on the part of the purchaser, in particular in the event of a delay in payment, we shall be entitled to seize the object of purchase after the unsuccessful expiry of a grace period (if this is not dispensable under the applicable law). The readmission of possession regarding the object of sale by us shall constitute a withdrawal from the contract. After taking back the object of sale, we shall be entitled to sell the object of sale at our discretion. The proceeds from the sale shall be offset against the purchaser's liabilities – less the reasonable sales costs.
- (2) The purchaser shall be obliged to treat the object of sale with care. In particular, it shall be obliged to insure the object of sale at its own expense against fire, water damage and theft to a sufficient extent of the replacement value. Insofar as maintenance and inspection work is required, the purchaser must carry this out in good time and at its own expense.
- (3) In the event of seizures or interventions by third parties, the purchaser must inform us immediately in writing or text form so that we can take legal action in accordance with § 771 of the German Civil Code (ZPO). Insofar as the third party is not in a position to reimburse us for the judicial and extra-judicial costs of a lawsuit in accordance with § 771 ZPO, the purchaser shall be liable for the loss incurred by us.
- (4) The purchaser shall be entitled to resell the object of sale in the ordinary course of business; however, it shall immediately assign all claims to us in the amount of the final invoice amount (including VAT) of our claim occurring for it from the resale against its purchasers or third parties, irrespective of whether the object of sale has been resold without or after processing. The purchaser shall remain authorised to collect this claim even after the assignment. Our authority to collect the claim ourselves remains unaffected by this. However, we undertake not to collect the claim as long as the purchaser fulfils its payment obligations from the collected proceeds, is not late with payments and, in particular, as long as no petition for the opening of settlement or insolvency proceedings has been filed, or payments have been suspended. If this is the case, however, we shall be entitled to demand that the purchaser notifies us of the assigned claims and the respective debtors, provides us with all information necessary for collection, hands over the associated documents and notifies the debtors (third parties) of the assignment.
- (5) The processing or transformation of the object of sale by the purchaser shall always be carried out on our behalf. If the object of sale is processed with other objects not belonging to us, we shall acquire co-ownership of the new object in the ratio of the value of the object of sale (final invoice amount, including VAT) to the other processed objects at the time of processing. In all other respects, the same shall apply to the item created by processing as to the object of sale delivered under reservation of title.
- (6) If the object of sale is inseparably combined with other objects not belonging to us, we shall acquire co-ownership of the new object in proportion to the value of the object of sale (final invoice amount, including VAT) to the other combined objects at the time of combination. If the combination is carried out in such a way that the purchaser's item is to be regarded as the main item, it shall be deemed to have been agreed that the purchaser shall transfer co-ownership to us for the respective share. The purchaser shall keep the sole ownership or co-ownership thus created in safe custody for us.
- (7) The purchaser shall also assign to us the claims to secure our claims against it, which arise against a third party as a result of the combination of the purchased item with real estate.
- (8) We shall be committed to release the securities to which we are entitled at the purchaser's request insofar as the realisable value of our securities exceeds the claims to be secured by more than 10%. The selection of the securities to be released shall be at our discretion.

§ 17 Place of jurisdiction – place of performance – data protection

- (1) If the purchaser is a merchant, our place of business shall be the place of jurisdiction. However, we shall also be entitled to sue the purchaser at its residential or business domicile court.
- (2) In the case of cross-border deliveries, the exclusive place of jurisdiction for all disputes arising directly or indirectly from the contractual relationship shall be Oytan, Federal Republic of Germany, insofar as the purchaser is a merchant within the meaning of the German Commercial Code. However, we are also entitled to sue the purchaser at any other court which is competent under the Brussels Regime, or under other legal provisions and international conventions.
- (3) If the purchaser is a consumer, the statutory place of jurisdiction shall apply. However, the court of our place of business shall also have additional jurisdiction if the consumer has an undetermined place of residence, or has moved abroad after the conclusion of the contract.
- (4) Unless otherwise specified in the order confirmation, our place of business is the place of performance.
- (5) For all legal relationships between us and the purchaser under this contract, only the law governing the legal relationships of domestic parties at our registered office (German law) shall apply, under exclusion of any foreign law. The validity of the UN Convention on Contracts for the International Sale of Goods (CISG) is excluded.
- (6) Please note our data protection statement, which we have provided for you on our website <https://www.doyma.com/privacy-policy> under 'Privacy policy'.

Oytan, last updated January 2024



Notes

Subject to technical changes. Some illustrations include accessories. R-MT-1-514-02/2024

25

years
guarantee

DOYMA is the first company on the building penetration technology market to offer a warranty that goes far beyond legal requirements. This extraordinary warranty promise is based on decades of practical experience. Benefit from our warranty services:

- Replacement of the product in case of damage
- Up to €10,000 to cover the costs of installation and removal
- Up to €100,000 to cover the costs of damages incurred

WE WILL BE HAPPY TO ADVISE !

GERMANY

DOYMA GmbH & Co

💧 SEALING SYSTEMS

🔥 FIRE CONTROL SYSTEMS

Industriestr. 43-57
28876 Oyten

Fon: +49 (0) 4207/91 66-0
Fax: +49 (0) 4207/91 66-199

info@doyma.de
www.doyma.de



CONTACT PERSON TEAM VG 1:

+49 (0) 4207/91 66-610
anfrage-vg1@doyma.de



CONTACT PERSON TEAM VG 2:

+49 (0) 4207/91 66-620
anfrage-vg2@doyma.de



CONTACT PERSON VG 3:

+49 (0) 4207/91 66-630
anfrage-vg3@doyma.de



CONTACT PERSON
FOR CONTRACT MATTERS AND ORDERS:

+49 (0) 4207/91 66-500
bestellung@doyma.de



CONTACT PERSON FOR EXPORT:

+49 (0) 4207/91 66-550
export@doyma.de

AUSTRIA

DOYMA GmbH & Co

💧 SEALING SYSTEMS

🔥 FIRE CONTROL SYSTEMS

Perfektastr. 61 Objekt 3/Top 2
1230 Wien

Fon: +43 (0) 1 / 698 1388
Fax: +43 (0) 1 / 698 1388-99

info@doyma.at
www.doyma.at



Each of our three sales territories is supported by a competent, highly motivated team.

Do you need support or have any questions about our product ranges?

Then contact us.



YOU CAN FIND ALL CONTACT
PERSONS FOR THE INDIVIDUAL
TEAMS AT:

<https://www.doyma.com/company/contact-persons>

MEMBERSHIPS:

