
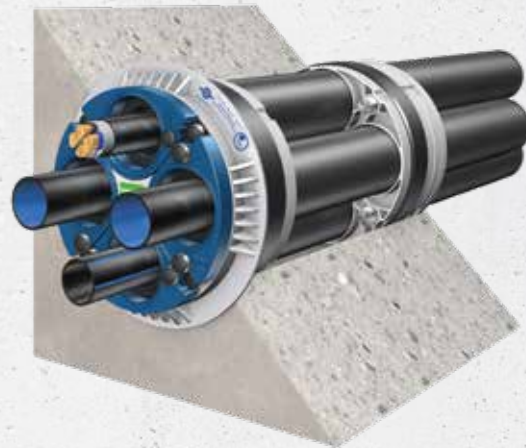


Quadro-Sicura® Nova 2-M

for buildings with basements

 PRESSING WATER

- Multi-compartment house lead-in **with sealing on both sides**
- Installation in **pre-installed pipe sleeve or core bore in waterproof concrete (white tank)**
- For **multiple assignment** of different utilities



25
years
guarantee

PRODUCT ADVANTAGES

- For multiple assignment of different individual utilities (not gas)
- Non-corrosive and non-conductive
- Installation without torque spanner
- Infinitely variable modular gaskets for water and energy

TECHNICAL DETAILS

- DVGW and SVGW-approved
- Leak-tight against gas and pressing water
- radon-tight – according to FHRK information sheet MB101 meets the requirements for radon precautionary areas
- Optionally, methane gas resistant design is available
- Dry installation
- Optional installation in accordance with DIN 18533 possible
- 100% separation of utilities; each section is sealed separately
- Variable arrangement of individual compartments possible
- The entire component is freely rotatable according to the connection requirements
- Relining possible when connecting jacket pipes
- Connection option for rigid or flexible jacket pipes DN 75
- All utilities are given dummy plugs that are leak-tight against gas and pressing water

Possible utility assignments		Pipe/cable Ø
Optional	Water	Outer diameter: 32 mm, 40 mm, 50 mm; optional outer diameter 63 mm
	Electricity	Outer diameter of 25–53 mm
	Telecommunications	Outer diameter: 2 × 5–7 mm, 4 × 7–13 mm, 1 × 13 – 21 mm

Dimensions	
Core bore/pipe sleeve Ø	199–204 mm
Wall thicknesses	150–550 mm

Further dimensions and versions available upon request.

Article number
2520 211 000 00

Prices do not include fixtures and pipes/cables.

Prepared as standard for the following building services: 2 × water (outer Ø 32–50 mm), 1 × electricity (outer Ø 26–36 mm), 1 × telecommunications (up to seven lines: 2 × 5–7 mm, 3 × 7–13 mm, 1 × 14–18 mm and 1 × 19–22 mm)