


Quadro-Sicura® E-S

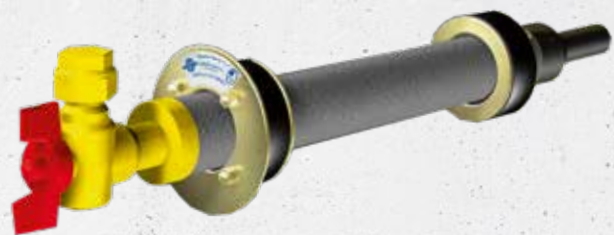
for buildings with basements

 PRESSING WATER

- Single-compartment house lead-in **with sealing on both sides**
- Installation in **pre-installed pipe sleeve or core bore in waterproof concrete (white tank)**
- For the utility gas
- **Without jacket pipe connection**



25 years
guarantee



PRODUCT ADVANTAGES

- No additional mechanical fastening required
- Permanently sealed – no need to re-tension later (maintenance-free)

TECHNICAL DETAILS

- DVGW-approved (RMA, Schuck and VAF-Voigt)
- Extraction and torsion safety in accordance with DVGW VP 601
- Leak-tight against gas and pressing water
- radon-tight – according to FHRK information sheet MB101 meets the requirements for radon precautionary areas
- Installation optionally in accordance with DIN 18533

THE HOUSE LEAD-IN CONSISTS OF:

- one gasket insert with large ring, mounted inside the basement, and one gasket insert, mounted in the outer area of the building wall



Gas duct system type	DN [mm]	Core bore / pipe sleeve [DN in mm]	Wall thicknesses [mm]
RMA	25	100	≥ 90
	32 / 40 / 50	150	≥ 140
Schuck	25	125	≥ 180
	32 / 40 / 50	150	≥ 140
VAF-Voigt	25	100	≥ 140
	50	150	≥ 140
Burger	25 / 32	100	≥ 140

Gas duct system	DN of gas duct system	DN of pipe sleeve/core bore	Article number
For RMA gas duct system	DN 25	100	2831 000 000 00
	DN 32 / DN 40	150	2831 000 018 00
	DN 50	150	2831 000 022 00
For Schuck gas house lead-in	DN 25	125	2832 000 000 00
	DN 32 / DN 40	150	2832 000 017 00
	DN 50	150	2832 000 023 00
For VAF-Voigt gas duct system	DN 25	100	2833 000 000 00
	DN 50	150	2833 000 024 00
For Burger gas duct system	DN 25 / DN 32	100	2834 000 000 00

Prices do not include fixtures and pipes/cables.

Quadro-Sicura® E-S installation situation

