



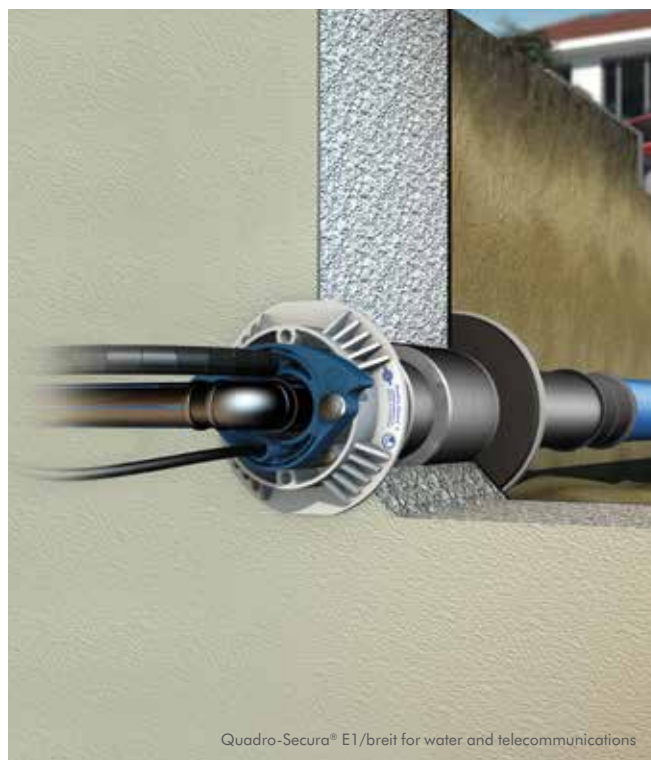
Quadro-Sicura® building owner's package- Single-compartment

FOR BUILDINGS WITH BASEMENTS

Sealing on both sides: Quadro-Sicura® E1/breit



Quadro-Sicura® E1/breit for gas



Quadro-Sicura® E1/breit for water and telecommunications

APPLICATION

Single-compartment house lead-in with sealing on both sides. Additional seal flange on the outside wall in accordance with DIN 18533 for sealing tanking membranes (black tank). Also suitable for waterproof concrete core bores and twin/element walls!

For the following building services: gas, water, electricity and telecommunications. **Completely equipped with the required accessories.**

PRODUCT ADVANTAGES


- DVGW-approved products as per VP 601 (B1)
- Building service is pre-assembled and given dummy plugs that are leak-tight against gas and pressing water
- Certified leak-tight against gas and pressing water in accordance with DIN 18322
- The sealing system is certified as 'radon-tight'
- Space-saving installation of building/mains connections and associated connection lines
- Cost-effective when used in a casing or core bore DN 100 (99–103 mm)
- Subsequent replacement of pipes possible (relining)*
- Pipes can be laid independently from construction progress*
- Universal sealing for all standard pipe diameters
- Can be used for all standard flexible gas house lead-in combinations/sealing for RMA and Schuck version 1 lead-ins included in package (Burger possible on request)
- Optional sealing in accordance with DIN 18195/DIN 18533 possible

* when connecting jacket pipes; optional accessories

COMPONENTS/SCOPE OF DELIVERY

VERSION 1:
gas (RMA + SCHUCK)

1x Quadro-Sicura® E1/breit
Including pre-assembled building service seal
Gas: DN 25 RMA and Schuck gas house lead-ins
Core bore/pipe sleeve diameter: 99 – 103 mm
Wall thickness: 160 – 550 mm


 **25** years guarantee



1x Doppelsteckmuffe (2707)
For connecting and extending cable protection pipes.



1x gas ring plug
For preventing ingress of sand.
Gas-permeable.



1x Schuck extension set
For the gas house lead-in
(RMA already pre-assembled).



VERSION 2:
water, electricity, telecommunications

1x Quadro-Sicura® E1/breit
Including pre-assembled building service seal
Water or electricity: outer diameter 23 – 40 mm
Telecom.: up to five lines with 2 x 5 – 7 mm,
2 x 7 – 13 mm, 1 x 12 – 16 mm
Core bore/pipe sleeve diameter: 99 – 103 mm
Wall thickness 160 – 550 mm

 **25** years guarantee



1x double sleeves (2707)
For connecting and extending cable protection pipes.



1x Doppelsteckmuffe (2704)
For sealing the jacket pipes
and lines.



Quadro-Sicura® single-compartment building owner's package for buildings with basements	Article number
Version Gas (RMA + Schuck)	2818 000 000 92

Quadro-Sicura® single-compartment building owner's package for buildings with basements	Article number
Version Water or electricity and telecom.	2810 000 025 92

Prices do not include fixtures and pipes.