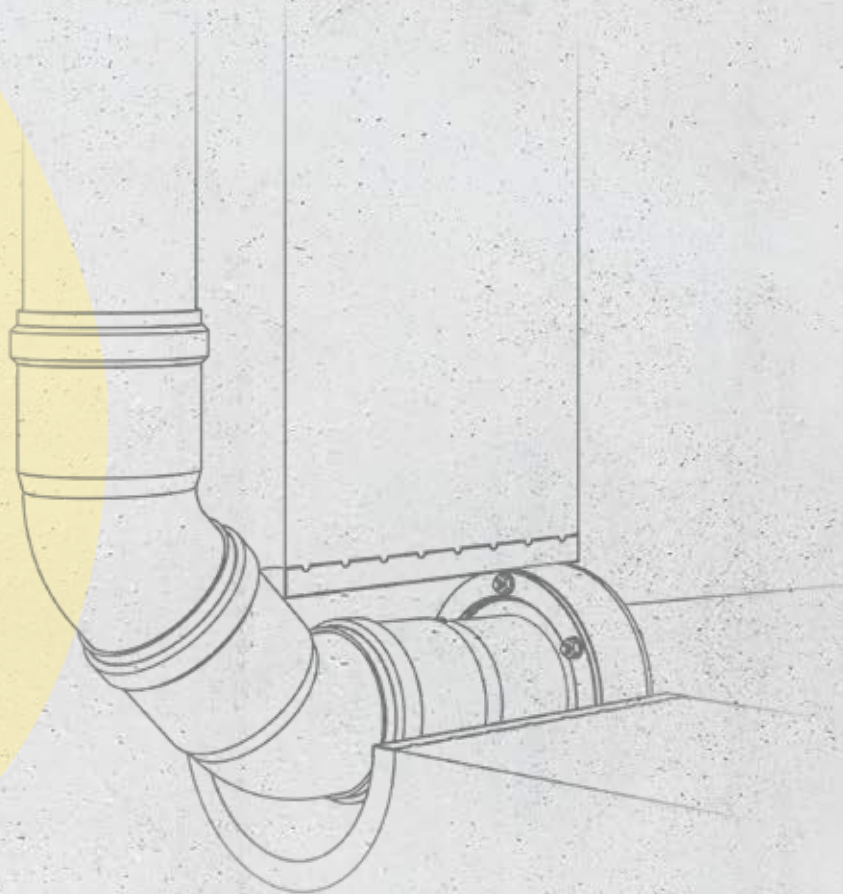




HKD + Link-Seal CATALOGUE 2024

Valid from 1 January 2024



JUST SIMPLY SAFE.



Individual clamping ranges of the gasket inserts

Inner diameter of pipe sleeve/core bore [DN in mm]	Outer diameter of pipe/cable [mm]	Inner diameter of pipe sleeve/core bore [DN in mm]	Outer diameter of pipe/cable [mm]	Inner diameter of pipe sleeve/core bore [DN in mm]	Outer diameter of pipe/cable [mm]	Inner diameter of pipe sleeve/core bore [DN in mm]	Outer diameter of pipe/cable [mm]
50	17 – 19	150	57 – 60	300	158 – 162	450	339 – 343
	20 – 22		61 – 64		163 – 167		344 – 348
	23 – 24		65 – 68		168 – 170		349 – 352
80	5 – 7		69 – 70		171 – 173		353 – 356
	8 – 10		71 – 73		174 – 177		357 – 359
	11 – 13		74 – 77		178 – 180		360 – 364
	14 – 16		78 – 80		181 – 183		365 – 369
	17 – 19		81 – 85		184 – 186		370 – 374
	20 – 22		86 – 87		187 – 190		375 – 377
	23 – 24		88 – 91		191 – 195		378 – 380
	25 – 27		92 – 95		196 – 199	500	381 – 385
	28 – 31		96 – 97		200 – 204		386 – 390
	32 – 35		98 – 100		205 – 208		391 – 395
	36 – 40		101 – 104		209 – 212		396 – 397
100	50		105 – 107		213 – 216		398 – 401
	7 – 8		108 – 110		217 – 218		402 – 405
	9 – 11		111 – 115		219 – 223		406 – 410
	12 – 16		78 – 81		224 – 226		411 – 415
	17 – 21		82 – 85		227 – 228		416 – 420
	22 – 26		86 – 90		229 – 230		421 – 425
	27 – 31		91 – 93		231 – 235		426 – 430
	32 – 35		94 – 97		250		431 – 433
	36 – 40		98 – 100		231 – 234		434 – 436
	41 – 44	200	101 – 104		235 – 239		437 – 439
	45 – 47		105 – 107		240 – 244		440 – 442
	48 – 51		108 – 112		245 – 248		443 – 445
	52 – 54		113 – 115		249 – 253		446 – 447
	55 – 56		116 – 118		254 – 256		448 – 451
	57		119 – 122	350	257 – 260		452 – 454
	58		123 – 126		261 – 265		455 – 458
	59		127 – 132		266 – 270		459 – 461
	60		133 – 136		271 – 275		462 – 463
	61		137 – 141		276 – 277		464 – 467
	62		142 – 145		278 – 280		468 – 471
	63		159 – 160		281 – 282		472 – 474
	64		105 – 109		283 – 285		475 – 477
125	57 – 61		110 – 113		281 – 285	600	478 – 480
	62 – 64		114 – 118		286 – 290		481 – 483
	65 – 67		119 – 122		291 – 295		484 – 486
	68 – 72		123 – 126		296 – 298		487 – 489
	73 – 75		127 – 131		299 – 301		490 – 492
	76 – 77		132 – 136		302 – 306		493 – 495
			137 – 141		307 – 311		496 – 497
			142 – 144	400	312 – 316		498 – 501
			145 – 147		317 – 319		502 – 503
		250	148 – 152		320 – 321		504 – 507
			153 – 157		322 – 325		508 – 510
			158 – 162		326 – 329		511 – 513
			163 – 167		330 – 333		514 – 516
			168 – 170		334 – 335		517 – 519
			171 – 173		336 – 338		520 – 522
			174 – 177		339 – 342		523 – 525
			178 – 181		343 – 345		526 – 527
			182 – 185				528 – 531
			186 – 190				
			200				

Content

Individual clamping ranges of the gasket inserts.	2	HKD KG sewer floor element	46
FHRK quality seal	4	HKD KG sewer bend	47
Overview of water exposure	5	HKD KG sewer double sleeve.	48
Synonym for safety: DOYMA sealing systems.	6	HKD KG sewer flange pipe	49
combination of the HKD- and DOYMA product range	8	HKD KG sewer plug-in flange	50
HKD Products		HKD KG 2000 sewer wall element.	51
HKD DOMO-NW	10	HKD KG 2000 sewer floor element	52
HKD DOMO-NW-T.	12	HKD KG 2000 sewer bend	53
HKD DOMO-NW-B.	14	HKD KG 2000 sewer double sleeve	54
HKD DOMO-NW-FL.	16	HKD KG 2000 sewer flange pipe.	55
HKD DOMO-NW-M	18	HKD KG 2000 sewer plug-in flange.	56
HKD DOMO-NW-NK	20	HKD slip-on flange	57
HKD DOMO-NW-Z.	22	HKD connection funnel	58
HKD DOMO-DW	24	HKD wall collar	59
HKD DOMO-DW-T.	26	HKD APP-PU 50	60
HKD DOMO-DW-B.	28	link chains	
HKD DOMO-DW-FL	30	Link-Seal C, S316	62
HKD DOMO-DW-M	32	Link-Seal BC, BS316	64
HKD DOMO-DW-NK	34	Installation example for link chains	66
HKD DOMO-DW-Z.	36	Approvals, test reports, expert opinions	68
HKD DOMO-V / HKD DOMO-VT	38	Glossary	69
HKD KE casing	40	Terms and conditions for returns	70
HKD KE casing with bonding flange.	42	General terms and conditions	71
HKD KG sewer wall element	44		



MORE INFORMATION AND PRICES FOR OUR PRODUCTS CAN BE FOUND IN THE ADDITIONAL **PRODUCT RANGE PRICE LISTS** AND THE **BASIC PRINCIPLES OF SEALING AND FIRE CONTROL!**

Subject to technical changes. Prices specified in EUR/pc. not including statutory VAT. The price list is valid until a new price list is released. Prices may change due to price fluctuations. Errors, omissions, typos and price changes excepted.

The HKD range is excluded from the DOYMA 25-year warranty.

SEALING SYSTEMS FROM DOYMA

Systems with the FHRK quality seal!



In the past, there were no uniform test standards for the production and installation of sealing products in waterproof concrete structures, even though the building seal in particular is crucial for subsequent quality of life, safety, retention of value and health.

For this reason, the association **Fachverband Hauseinführungen für Rohre und Kabel (FHRK) e.V.** took the initiative and developed practical test regulations within its working committees.

Building owners, architects, supply companies and construction companies – everyone benefits from the new FHRK test regulations.

MORE SAFETY IN PRODUCT SELECTION

Thanks to uniform product and quality standards

GREATER PRODUCT QUALITY

Thanks to exacting test specifications based on practical load tests with defined thresholds

FULL TRUST IN PRODUCT PERFORMANCE

Thanks to confirmation of test standards by an independent and certified testing institute

BETTER COMPARABILITY

Thanks to uniform documentation and verification requirements

'FHRK QUALITY' – SUCCESSFULLY TESTED!

DOYMA sealing systems have passed the test and feature the 'FHRK quality' seal.

The corresponding products and their documentation are marked with the FHRK quality seal.

More safety in function and quality!



M-MT-1-904-01/2024

Subject to technical changes. Some illustrations include accessories.

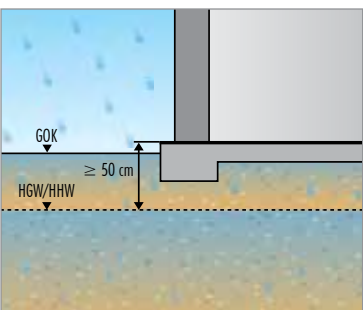
DIN 18533 'BLACK TANK' – WATERPROOFING GUIDELINE 'WHITE TANK'

Overview of water exposure

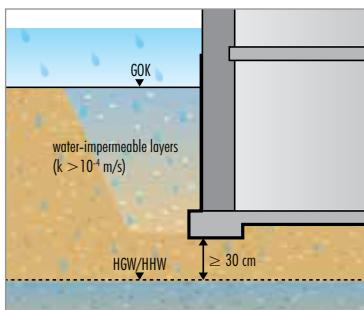
NON-PRESSING WATER

DIN 18533 W1-E: SOIL MOISTURE AND NON-PRESSING WATER

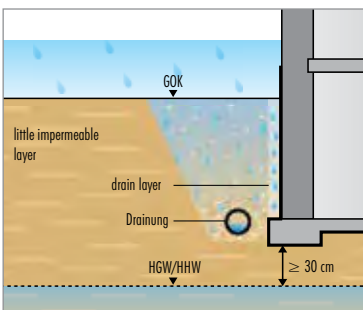
W1.1-E: soil moisture
Soil/fill heavily water-permeable



W1.1-E: soil moisture
Non-pressing water
Soil/fill heavily water-permeable



W1.2-E: soil moisture
Non-pressing water
Soil/fill less water-permeable
with drainage in accordance with
DIN 4095

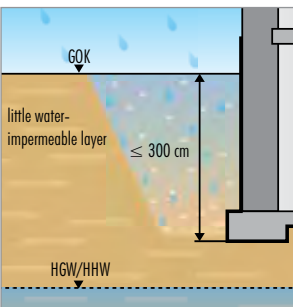


Waterproofing guideline, load class 2: soil moisture and non-standing seepage water

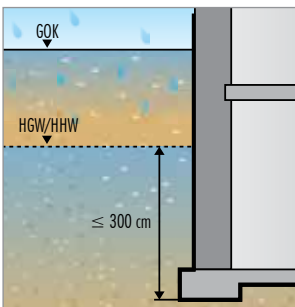
PRESSING WATER

DIN 18533 W2-E: PRESSING WATER

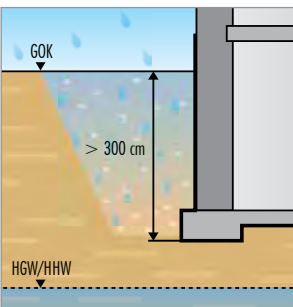
W2.1-E: standing water up to 3 m
Soil/fill less water-permeable



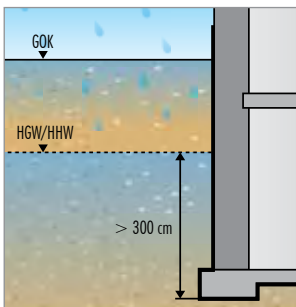
W2.1-E: groundwater/ flood level up to 3 m



W2.2-E: standing water greater than 3 m
Soil/fill less water-permeable



W2.2-E: groundwater/ flood level up to 3 m



Waterproofing guideline, load class 1: Constant and temporary pressing water

More information can be found in the DOYMA 'Basic principles of sealing systems' documentation



SYNONYM FOR SAFETY

DOYMA sealing systems

THE DOYMA BRAND HAS MADE ITS MARK ON THE SAFE SEALING OF BUILDING DUCT SYSTEMS LIKE NO OTHER

Sealing building duct systems is often just one small detail of a very complex building structure. Nevertheless, perfect sealing protects the people and objects inside the building as well as the building itself from external influences, especially water and gas ingress. DOYMA offers you a valuable tool for the professional, expert planning and implementation of a wide range of different types of building sealing methods:

BASIC PRINCIPLES OF SEALING SYSTEMS

- Safe action based on knowledge of the generally accepted state of the art
- Extremely streamlined visualisation of known building conditions, making them easy to understand
- Essential control engineering notes using the FHRK planning aid
- List of suitable DOYMA products
- Achieve your objective quickly with the best DOYMA product recommendations
- Regulations, guidelines and standards to be observed
- Information on relevant regulations and guidelines
- ...and other useful information



AVAILABLE TO DOWNLOAD FROM:
www.doyma.com



* FHRK = Fachverband Hauseinführungen für Rohre und Kabel e.V.

**EXAMPLES:
NON-COMPLIANT EXECUTION**



Lack of knowledge surrounding building duct systems leads to ad hoc 'building site fixes' that do not meet the state of the art. These 'solutions' do not comply with applicable regulations and do not guarantee a permanently safe seal.

**EXAMPLES:
COMPLIANT EXECUTION**



Curaflex® sealing systems from DOYMA are the safe solution for professional, expert sealing of building duct systems. They are suitable for all conventional types of building seals and come with an excellent warranty.



GUIDELINES THAT YOU SHOULD KNOW!*

The following guidelines, among others, must be observed when planning and implementing gas and watertight sealing of building duct systems:

- DIN 18533, Waterproofing of elements in contact with soil
- DIN 18535, Waterproofing of tanks and pools
- DIN 18322, German construction contract procedures (VOB) Part C, General technical specifications in construction contracts (ATV) – Underground cable laying
- DIN 18336, German construction contract procedures (VOB) Part C, General technical specifications in construction contracts (ATV) – Waterproofing
- DIN 1986-100, Drainage systems on private ground
- DAfStb (German Committee for Reinforced Concrete) guideline, Waterproof concrete structures (Waterproofing guideline)
- AGFW FW419/ DVGW GW-390 / VDE-AR-N 4223, Building duct systems and their sealing for buried pipes and cables
- WTA – Recommendation 4-6-14/D, Sealing of structural elements in contact with soil at a later stage

* Standards and guidelines which must be observed may vary depending on the federal state and local building code.

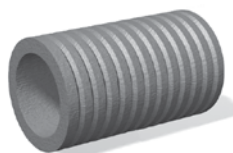
Combination of the HKD and DOYMA product range

Products in the HKD range can of course also be combined with DOYMA Curaflex® products. In particular, the Curaflex® pipe sleeves and the extensive range of accessories are at your disposal.

Curaflex® pipe sleeves made of special fibre cement

ADVANTAGES AT A GLANCE

- Homogeneous and watertight connection with the concrete
- Dimensionally stable
- For flush mounting into the formwork
- Optimally designed inner wall for holding the DOYMA sealing systems and building services duct system
- Prevention of shrinkage cracks



Curaflex® 3000

- Use in the wall
- Made of high-quality special fibre cement
- Special grooving on the exterior surfaces
- For waterproof concrete structures



Curaflex® 3001

- Use in unfinished structures
- For use with sealants to be processed in liquid form (black tank)
- With bonding flange in accordance with DIN 18533

Curaflex® steel pipe sleeves

ADVANTAGES AT A GLANCE

- Optimally designed inner wall for holding the DOYMA sealing systems and building services duct system
- High static load capacity
- Optionally for use even without a suitable core bore or pipe sleeve
- Versions for flush mounting into the formwork
- Retrofitting possible with split versions



Curaflex® 6000 Steel pipe sleeve

- Use in unfinished structures
- For use with tanking membranes or thick coating (black tank)
- With fixed and loose flange
- For high static load capacity



Curaflex® 8000 / T Steel pipe sleeve with flange plate and sleeve

- Use in front of the wall
- For waterproof concrete structures (white tank)
- For thick coating (black tank)
- For pipes and cables that are already installed (renovation)



IMPORTANT NOTE! WHEN INSTALLING STEEL PIPE SLEEVES IN BUILDING WALLS WITH A THICK COATING, THE CONTACT SURFACES MUST BE SANDED AT THE FACTORY. IN SUCH CASES, PLEASE BE SURE TO SPECIFY THE FOLLOWING WHEN PLACING AN ORDER: 'FOR THICK COATING'.

Aquagard core bore sealant

CONCRETE NEEDS PROTECTION!

Pre-cut reinforcement steel must be protected against corrosion. Moreover, concrete can absorb moisture up to a certain depth before absolute water impermeability occurs. This makes it possible for water to migrate around the gasket insert. Aquagard core bore sealant prevents this. Based on these findings, we **recommend** pre-treating the core bore with Aquagard.

THE SYSTEM CONSISTS OF

Aquagard primer (type 1710/1711)

Base coat/primer for Aquagard special paint

The primer penetrates deep into the capillaries and air bubbles in the concrete and seals these so they are permanently watertight. This prevents water from getting into the gasket insert this way. The primer is applied with a brush or roller.

Aquagard special paint (type 1715/1716)

Special paint for sealing core bores

Aquagard special paint seals the surface of the core bore wall and at the same time protects any pre-cut reinforcement steel from corrosion. The special paint is also applied with a brush or roller.



Delivery size 1 litre

Delivery size 1/3 litre

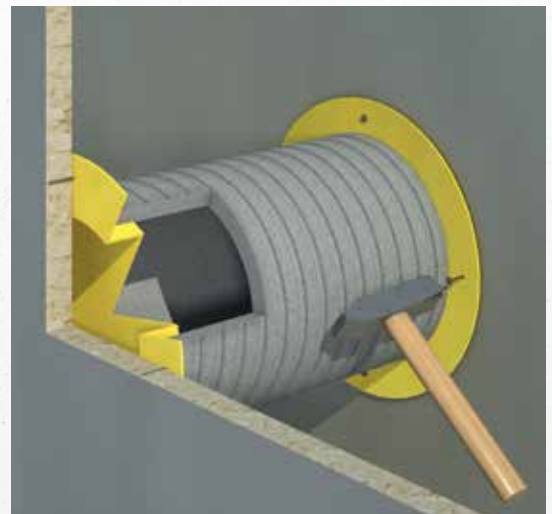
Curaflex® formwork fastener (1701)

TECHNICAL DETAILS


- Support for easy and fast fixing of the pipe sleeve in the formwork.
- Provided with a wide nail edge for fastening to the formwork.
- Available for pipe sleeves up to DN 400

MATERIAL

- Plastic



HKD DOMO-NW

 NON-PRESSING WATER

- Installation in **pre-installed pipe sleeve** or **core bore in waterproof concrete** (white tank)



The HKD DOMO-NW features robust craftsmanship quality. **The press rings used are made of one piece and cover the rubber gasket over a large area. This ensures an even and reliable force fitting. Completely made of stainless steel V2A.**

- Certified under FHRK test regulation GE 101 (no. G 30 322-2-7) – FHRK 20 D01
- Water-tight against non-pressing water (20 mm seal width)
- Radon-tight – according to FHRK information sheet MB101 meets the requirements for radon precautionary areas
- All metal parts made of stainless steel 1.4301 (V2A/Inox 304), optionally 1.4571 (V4A/Inox 316)
- Seal material is solid EPDM rubber
- Gas-tight



ACCESSORIES

- Aquagard core bore sealant, see Curaflex® accessories


The HKD range is excluded from the DOYMA 25-year warranty.

HKD DOMO-NW

Inner diameter of pipe sleeve/core bore [DN in mm]	Outer diameter of pipe/cable d [mm]	V2A Article number	V4A Article number
80 (79 – 83)	11 – 13	8 01 0 012 080 2 0	8 01 0 012 080 4 0
	14 – 16	8 01 0 015 080 2 0	8 01 0 015 080 4 0
	17 – 19	8 01 0 017 080 2 0	8 01 0 017 080 4 0
	20 – 22	8 01 0 022 080 2 0	8 01 0 022 080 4 0
	25 – 27	8 01 0 025 080 2 0	8 01 0 025 080 4 0
	28 – 31	8 01 0 028 080 2 0	8 01 0 028 080 4 0
	32 – 35	8 01 0 032 080 2 0	8 01 0 032 080 4 0
	36 – 40	8 01 0 040 080 2 0	8 01 0 040 080 4 0
100 (99 – 103)	12 – 16	8 01 0 015 100 2 0	8 01 0 015 100 4 0
	17 – 21	8 01 0 020 100 2 0	8 01 0 020 100 4 0
	22 – 26	8 01 0 025 100 2 0	8 01 0 025 100 4 0
	27 – 31	8 01 0 028 100 2 0	8 01 0 028 100 4 0
	32 – 35	8 01 0 032 100 2 0	8 01 0 032 100 4 0
	36 – 40	8 01 0 040 100 2 0	8 01 0 040 100 4 0
	41 – 44	8 01 0 042 100 2 0	8 01 0 042 100 4 0
	48 – 51	8 01 0 050 100 2 0	8 01 0 050 100 4 0
	52 – 54	8 01 0 054 100 2 0	8 01 0 054 100 4 0
	55 – 56	8 01 0 056 100 2 0	8 01 0 056 100 4 0
	57 – 57	8 01 0 057 100 2 0	8 01 0 057 100 4 0
	58 – 58	8 01 0 058 100 2 0	8 01 0 058 100 4 0
125 (124 – 128)	60 – 60	8 01 0 060 100 2 0	8 01 0 060 100 4 0
	63 – 63	8 01 0 063 100 2 0	8 01 0 063 100 4 0
	57 – 61	8 01 0 060 125 2 0	8 01 0 060 125 4 0
	62 – 64	8 01 0 063 125 2 0	8 01 0 063 125 4 0
150 (149 – 153)	73 – 75	8 01 0 075 125 2 0	8 01 0 075 125 4 0
	76 – 77	8 01 0 076 125 2 0	8 01 0 076 125 4 0
	57 – 60	8 01 0 060 150 2 0	8 01 0 060 150 4 0
	74 – 77	8 01 0 075 150 2 0	8 01 0 075 150 4 0
	78 – 80	8 01 0 078 150 2 0	8 01 0 078 150 4 0
	88 – 91	8 01 0 090 150 2 0	8 01 0 090 150 4 0
	98 – 100	8 01 0 098 150 2 0	8 01 0 098 150 4 0
	101 – 104	8 01 0 102 150 2 0	8 01 0 102 150 4 0
	108 – 110	8 01 0 110 150 2 0	8 01 0 110 150 4 0
	111 – 115	8 01 0 114 150 2 0	8 01 0 114 150 4 0

Inner diameter of pipe sleeve/core bore [DN in mm]	Outer diameter of pipe/cable d [mm]	V2A Article number	V4A Article number
200 (199 – 204)	108 – 112	8 01 0 110 200 2 0	8 01 0 110 200 4 0
	113 – 115	8 01 0 114 200 2 0	8 01 0 114 200 4 0
	116 – 118	8 01 0 118 200 2 0	8 01 0 118 200 4 0
	123 – 126	8 01 0 125 200 2 0	8 01 0 125 200 4 0
	133 – 136	8 01 0 135 200 2 0	8 01 0 135 200 4 0
	137 – 141	8 01 0 140 200 2 0	8 01 0 140 200 4 0
	142 – 145	8 01 0 144 200 2 0	8 01 0 144 200 4 0
	159 – 160	8 01 0 160 200 2 0	8 01 0 160 200 4 0
250 (247 – 253)	137 – 141	8 01 0 140 250 2 0	8 01 0 140 250 4 0
	142 – 144	8 01 0 144 250 2 0	8 01 0 144 250 4 0
	148 – 152	8 01 0 148 250 2 0	8 01 0 148 250 4 0
	158 – 162	8 01 0 160 250 2 0	8 01 0 160 250 4 0
	168 – 170	8 01 0 170 250 2 0	8 01 0 170 250 4 0
	174 – 177	8 01 0 175 250 2 0	8 01 0 175 250 4 0
	178 – 181	8 01 0 180 250 2 0	8 01 0 180 250 4 0
	200 – 204	8 01 0 200 300 2 0	8 01 0 200 300 4 0
300 (297 – 304)	209 – 212	8 01 0 210 300 2 0	8 01 0 210 300 4 0
	219 – 223	8 01 0 222 300 2 0	8 01 0 222 300 4 0
	224 – 226	8 01 0 225 300 2 0	8 01 0 225 300 4 0
	240 – 244	8 01 0 242 350 2 0	8 01 0 242 350 4 0
350 (347 – 353)	249 – 253	8 01 0 250 350 2 0	8 01 0 250 350 4 0
	271 – 275	8 01 0 271 350 2 0	8 01 0 271 350 4 0
	278 – 280	8 01 0 280 350 2 0	8 01 0 280 350 4 0
	312 – 316	8 01 0 315 400 2 0	8 01 0 315 400 4 0
400 (397 – 403)	322 – 325	8 01 0 324 400 2 0	8 01 0 324 400 4 0
	326 – 329	8 01 0 326 400 2 0	8 01 0 326 400 4 0
	353 – 356	8 01 0 355 450 2 0	8 01 0 355 450 4 0
450 (447 – 453)	398 – 401	8 01 0 400 500 2 0	8 01 0 400 500 4 0
500 (497 – 503)	406 – 410	8 01 0 406 500 2 0	8 01 0 406 500 4 0
	426 – 430	8 01 0 429 500 2 0	8 01 0 429 500 4 0
	448 – 451	8 01 0 450 600 2 0	8 01 0 450 600 4 0
600 (597 – 603)	498 – 501	8 01 0 500 600 2 0	8 01 0 500 600 4 0
	508 – 510	8 01 0 508 600 2 0	8 01 0 508 600 4 0

HKD DOMO-NW-T

 NON-PRESSING WATER

- Installation in **pre-installed pipe sleeve** or **core bore in waterproof concrete** (white tank)



The HKD DOMO-NW-T features robust craftsmanship quality. **The split version for retrofitting is hinged and can be used on pipes and cables that have already been installed.**

- Certified under FHRK test regulation GE 101 (no. G 30 322-2-7) – FHRK 20 D01
- Water-tight against non-pressing water (20 mm seal width)
- Radon-tight – according to FHRK information sheet MB101 meets the requirements for radon precautionary areas
- Hinged version, for pipes and cables that are already installed
- All metal parts made of stainless steel 1.4301 (V2A/Inox 304), optionally 1.4571 (V4A/Inox 316)
- Seal material is solid EPDM rubber
- Gas-tight



ACCESSORIES

- Aquagard core bore sealant, see Curaflex® accessories


The HKD range is excluded from the DOYMA 25-year warranty.

HKD DOMO-NW-T

Inner diameter of pipe sleeve/core bore [DN in mm]	Outer diameter of pipe/cable d [mm]	V2A Article number	V4A Article number
80 (79 – 83)	11 – 13	8 01 2 012 080 2 0	8 01 2 012 080 4 0
	14 – 16	8 01 2 015 080 2 0	8 01 2 015 080 4 0
	17 – 19	8 01 2 017 080 2 0	8 01 2 017 080 4 0
	20 – 22	8 01 2 022 080 2 0	8 01 2 022 080 4 0
	25 – 27	8 01 2 025 080 2 0	8 01 2 025 080 4 0
	28 – 31	8 01 2 028 080 2 0	8 01 2 028 080 4 0
	32 – 35	8 01 2 032 080 2 0	8 01 2 032 080 4 0
	36 – 40	8 01 2 040 080 2 0	8 01 2 040 080 4 0
100 (99 – 103)	12 – 16	8 01 2 015 100 2 0	8 01 2 015 100 4 0
	17 – 21	8 01 2 020 100 2 0	8 01 2 020 100 4 0
	22 – 26	8 01 2 025 100 2 0	8 01 2 025 100 4 0
	27 – 31	8 01 2 028 100 2 0	8 01 2 028 100 4 0
	32 – 35	8 01 2 032 100 2 0	8 01 2 032 100 4 0
	36 – 40	8 01 2 040 100 2 0	8 01 2 040 100 4 0
	41 – 44	8 01 2 042 100 2 0	8 01 2 042 100 4 0
	48 – 51	8 01 2 050 100 2 0	8 01 2 050 100 4 0
	52 – 54	8 01 2 054 100 2 0	8 01 2 054 100 4 0
	55 – 56	8 01 2 056 100 2 0	8 01 2 056 100 4 0
	57 – 57	8 01 2 057 100 2 0	8 01 2 057 100 4 0
	58 – 58	8 01 2 058 100 2 0	8 01 2 058 100 4 0
	60 – 60	8 01 2 060 100 2 0	8 01 2 060 100 4 0
	63 – 63	8 01 2 063 100 2 0	8 01 2 063 100 4 0
125 (124 – 128)	57 – 61	8 01 2 060 125 2 0	8 01 2 060 125 4 0
	62 – 64	8 01 2 063 125 2 0	8 01 2 063 125 4 0
	73 – 75	8 01 2 075 125 2 0	8 01 2 075 125 4 0
	76 – 77	8 01 2 076 125 2 0	8 01 2 076 125 4 0
150 (149 – 153)	57 – 60	8 01 2 060 150 2 0	8 01 2 060 150 4 0
	74 – 77	8 01 2 075 150 2 0	8 01 2 075 150 4 0
	78 – 80	8 01 2 078 150 2 0	8 01 2 078 150 4 0
	88 – 91	8 01 2 090 150 2 0	8 01 2 090 150 4 0
	98 – 100	8 01 2 098 150 2 0	8 01 2 098 150 4 0
	101 – 104	8 01 2 102 150 2 0	8 01 2 102 150 4 0
	108 – 110	8 01 2 110 150 2 0	8 01 2 110 150 4 0
	111 – 115	8 01 2 114 150 2 0	8 01 2 114 150 4 0

Inner diameter of pipe sleeve/core bore [DN in mm]	Outer diameter of pipe/cable d [mm]	V2A Article number	V4A Article number
200 (199 – 204)	108 – 112	8 01 2 110 200 2 0	8 01 2 110 200 4 0
	113 – 115	8 01 2 114 200 2 0	8 01 2 114 200 4 0
	116 – 118	8 01 2 118 200 2 0	8 01 2 118 200 4 0
	123 – 126	8 01 2 125 200 2 0	8 01 2 125 200 4 0
	133 – 136	8 01 2 135 200 2 0	8 01 2 135 200 4 0
	137 – 141	8 01 2 140 200 2 0	8 01 2 140 200 4 0
	142 – 145	8 01 2 144 200 2 0	8 01 2 144 200 4 0
	159 – 160	8 01 2 160 200 2 0	8 01 2 160 200 4 0
250 (247 – 253)	137 – 141	8 01 2 140 250 2 0	8 01 2 140 250 4 0
	142 – 144	8 01 2 144 250 2 0	8 01 2 144 250 4 0
	148 – 152	8 01 2 148 250 2 0	8 01 2 148 250 4 0
	158 – 162	8 01 2 160 250 2 0	8 01 2 160 250 4 0
	168 – 170	8 01 2 170 250 2 0	8 01 2 170 250 4 0
	174 – 177	8 01 2 175 250 2 0	8 01 2 175 250 4 0
	178 – 181	8 01 2 180 250 2 0	8 01 2 180 250 4 0
300 (297 – 304)	200 – 204	8 01 2 200 300 2 0	8 01 2 200 300 4 0
	209 – 212	8 01 2 210 300 2 0	8 01 2 210 300 4 0
	219 – 223	8 01 2 222 300 2 0	8 01 2 222 300 4 0
	224 – 226	8 01 2 225 300 2 0	8 01 2 225 300 4 0
350 (347 – 353)	240 – 244	8 01 2 242 350 2 0	8 01 2 242 350 4 0
	249 – 253	8 01 2 250 350 2 0	8 01 2 250 350 4 0
	271 – 275	8 01 2 271 350 2 0	8 01 2 271 350 4 0
	278 – 280	8 01 2 280 350 2 0	8 01 2 280 350 4 0
400 (397 – 403)	312 – 316	8 01 2 315 400 2 0	8 01 2 315 400 4 0
	322 – 325	8 01 2 324 400 2 0	8 01 2 324 400 4 0
	326 – 329	8 01 2 326 400 2 0	8 01 2 326 400 4 0
450 (447 – 453)	353 – 356	8 01 2 355 450 2 0	8 01 2 355 450 4 0
500 (497 – 503)	398 – 401	8 01 2 400 500 2 0	8 01 2 400 500 4 0
	406 – 410	8 01 2 406 500 2 0	8 01 2 406 500 4 0
	426 – 430	8 01 2 429 500 2 0	8 01 2 429 500 4 0
600 (597 – 603)	448 – 451	8 01 2 450 600 2 0	8 01 2 450 600 4 0
	498 – 501	8 01 2 500 600 2 0	8 01 2 500 600 4 0
	508 – 510	8 01 2 508 600 2 0	8 01 2 508 600 4 0

HKD DOMO-NW-B

 NON-PRESSING WATER

- Installation in **pre-installed pipe sleeve** or **core bore in waterproof concrete** (white tank)



The HKD DOMO-NW-B features robust craftsmanship quality.
Supplied as a plug seal for safe sealing of an opening.

- Certified under FHRK test regulation GE 101 (no. G 30 322-2-7) – FHRK 20 D01
- Water-tight against non-pressing water (20 mm seal width)
- Radon-tight – according to FHRK information sheet MB101 meets the requirements for radon precautionary areas
- All metal parts made of stainless steel 1.4301 (V2A/Inox 304), optionally 1.4571 (V4A/Inox 316)
- Seal material is solid EPDM rubber
- Gas-tight



ACCESSORIES

- Aquagard core bore sealant, see Curaflex® accessories

The HKD range is excluded from the DOYMA 25-year warranty.


HKD DOMO-NW-B

Inner diameter of pipe sleeve/core bore [DN in mm]	V2A Article number	V4A Article number
80 (79 – 83)	8 01 0 000 080 2 0	8 01 0 000 080 4 0
100 (99 – 103)	8 01 0 000 100 2 0	8 01 0 000 100 4 0
125 (124 – 128)	8 01 0 000 125 2 0	8 01 0 000 125 4 0
150 (149 – 153)	8 01 0 000 150 2 0	8 01 0 000 150 4 0
200 (199 – 204)	8 01 0 000 200 2 0	8 01 0 000 200 4 0
250 (247 – 253)	8 01 0 000 250 2 0	8 01 0 000 250 4 0
300 (297 – 304)	8 01 0 000 300 2 0	8 01 0 000 300 4 0
350 (347 – 353)	8 01 0 000 350 2 0	8 01 0 000 350 4 0
400 (397 – 403)	8 01 0 000 400 2 0	8 01 0 000 400 4 0
450 (447 – 453)	8 01 0 000 450 2 0	8 01 0 000 450 4 0
500 (497 – 503)	8 01 0 000 500 2 0	8 01 0 000 500 4 0
600 (597 – 603)	8 010 000 600 2 0	8 01 0 000 600 4 0

All of the special seals deviating from the standard are delivered as type HKD DISO with 40 mm EPDM elastomer, with 2 × 40 mm EPDM elastomer for DN 800 and higher, for pressing and non-pressing water, and in stainless steel 1.4301 (V2A / Inox 304). The HKD DISO is optionally also available in stainless steel 1.4571 (V4A / Inox 316) and with other elastomer compounds, such as NBR.



HKD DOMO-NW-FL

 NON-PRESSING WATER

- Installation in **pre-installed pipe sleeve** or **core bore in waterproof concrete** (white tank)



The HKD DOMO-NW-FL features robust craftsmanship quality.
Supplied with a large ring for axial mounting.

- Certified under FHRK test regulation GE 101 (no. G 30 322-2-7) – FHRK 20 D01
- Water-tight against non-pressing water (20 mm seal width)
- Radon-tight – according to FHRK information sheet MB101 meets the requirements for radon precautionary areas
- Mounting from the pressure-facing side (water side)
- All metal parts made of stainless steel 1.4301 (V2A/Inox 304), optionally 1.4571 (V4A/Inox 316)
- Seal material is solid EPDM rubber
- Variant: HKD DOMO-NW-FL-K
Properties as described above, but with mounting from the non-pressure-facing side
- Gas-tight



ACCESSORIES

- Aquagard core bore sealant, see Curaflex® accessories

The HKD range is excluded from the DOYMA 25-year warranty.

HKD DOMO-NW-FL

Inner diameter of pipe sleeve/core bore [DN in mm]	Outer diameter of pipe/cable d [mm]	V2A Article number	V4A Article number
80 (79 – 83)	11 – 13	8 02 0 012 080 2 0	8 02 0 012 080 4 0
	14 – 16	8 02 0 015 080 2 0	8 02 0 015 080 4 0
	17 – 19	8 02 0 017 080 2 0	8 02 0 017 080 4 0
	20 – 22	8 02 0 022 080 2 0	8 02 0 022 080 4 0
	25 – 27	8 02 0 025 080 2 0	8 02 0 025 080 4 0
	28 – 31	8 02 0 028 080 2 0	8 02 0 028 080 4 0
	32 – 35	8 02 0 032 080 2 0	8 02 0 032 080 4 0
	36 – 40	8 02 0 040 080 2 0	8 02 0 040 080 4 0
100 (99 – 103)	12 – 16	8 02 0 015 100 2 0	8 02 0 015 100 4 0
	17 – 21	8 02 0 020 100 2 0	8 02 0 020 100 4 0
	22 – 26	8 02 0 025 100 2 0	8 02 0 025 100 4 0
	27 – 31	8 02 0 028 100 2 0	8 02 0 028 100 4 0
	32 – 35	8 02 0 032 100 2 0	8 02 0 032 100 4 0
	36 – 40	8 02 0 040 100 2 0	8 02 0 040 100 4 0
	41 – 44	8 02 0 042 100 2 0	8 02 0 042 100 4 0
	48 – 51	8 02 0 050 100 2 0	8 02 0 050 100 4 0
	52 – 54	8 02 0 054 100 2 0	8 02 0 054 100 4 0
	55 – 56	8 02 0 056 100 2 0	8 02 0 056 100 4 0
	57 – 57	8 02 0 057 100 2 0	8 02 0 057 100 4 0
	58 – 58	8 02 0 058 100 2 0	8 02 0 058 100 4 0
125 (124 – 128)	60 – 60	8 02 0 060 100 2 0	8 02 0 060 100 4 0
	63 – 63	8 02 0 063 100 2 0	8 02 0 063 100 4 0
	57 – 61	8 02 0 060 125 2 0	8 02 0 060 125 4 0
	62 – 64	8 02 0 063 125 2 0	8 02 0 063 125 4 0
150 (149 – 153)	73 – 75	8 02 0 075 125 2 0	8 02 0 075 125 4 0
	76 – 77	8 02 0 076 125 2 0	8 02 0 076 125 4 0
	57 – 60	8 02 0 060 150 2 0	8 02 0 060 150 4 0
	74 – 77	8 02 0 075 150 2 0	8 02 0 075 150 4 0
	78 – 80	8 02 0 078 150 2 0	8 02 0 078 150 4 0
	88 – 91	8 02 0 090 150 2 0	8 02 0 090 150 4 0
	98 – 100	8 02 0 098 150 2 0	8 02 0 098 150 4 0
	101 – 104	8 02 0 102 150 2 0	8 02 0 102 150 4 0
	108 – 110	8 02 0 110 150 2 0	8 02 0 110 150 4 0
	111 – 115	8 02 0 114 150 2 0	8 02 0 114 150 4 0

Inner diameter of pipe sleeve/core bore [DN in mm]	Outer diameter of pipe/cable d [mm]	V2A Article number	V4A Article number
200 (199 – 204)	108 – 112	8 02 0 110 200 2 0	8 02 0 110 200 4 0
	113 – 115	8 02 0 114 200 2 0	8 02 0 114 200 4 0
	116 – 118	8 02 0 118 200 2 0	8 02 0 118 200 4 0
	123 – 126	8 02 0 125 200 2 0	8 02 0 125 200 4 0
	133 – 136	8 02 0 135 200 2 0	8 02 0 135 200 4 0
	137 – 141	8 02 0 140 200 2 0	8 02 0 140 200 4 0
	142 – 145	8 02 0 144 200 2 0	8 02 0 144 200 4 0
	159 – 160	8 02 0 160 200 2 0	8 02 0 160 200 4 0
250 (247 – 253)	137 – 141	8 02 0 140 250 2 0	8 02 0 140 250 4 0
	142 – 144	8 02 0 144 250 2 0	8 02 0 144 250 4 0
	148 – 152	8 02 0 148 250 2 0	8 02 0 148 250 4 0
	158 – 162	8 02 0 160 250 2 0	8 02 0 160 250 4 0
	168 – 170	8 02 0 170 250 2 0	8 02 0 170 250 4 0
	174 – 177	8 02 0 175 250 2 0	8 02 0 175 250 4 0
	178 – 181	8 02 0 180 250 2 0	8 02 0 180 250 4 0
	200 – 204	8 02 0 200 300 2 0	8 02 0 200 300 4 0
300 (297 – 304)	209 – 212	8 02 0 210 300 2 0	8 02 0 210 300 4 0
	219 – 223	8 02 0 222 300 2 0	8 02 0 222 300 4 0
	224 – 226	8 02 0 225 300 2 0	8 02 0 225 300 4 0
	240 – 244	8 02 0 242 350 2 0	8 02 0 242 350 4 0
350 (347 – 353)	249 – 253	8 02 0 250 350 2 0	8 02 0 250 350 4 0
	271 – 275	8 02 0 271 350 2 0	8 02 0 271 350 4 0
	278 – 280	8 02 0 280 350 2 0	8 02 0 280 350 4 0
	312 – 316	8 02 0 315 400 2 0	8 02 0 315 400 4 0
400 (397 – 403)	322 – 325	8 02 0 324 400 2 0	8 02 0 324 400 4 0
	326 – 329	8 02 0 326 400 2 0	8 02 0 326 400 4 0
	450 (447 – 453)	8 02 0 355 450 2 0	8 02 0 355 450 4 0
500 (497 – 503)	398 – 401	8 02 0 400 500 2 0	8 02 0 400 500 4 0
	406 – 410	8 02 0 406 500 2 0	8 02 0 406 500 4 0
	426 – 430	8 02 0 429 500 2 0	8 02 0 429 500 4 0
600 (597 – 603)	448 – 451	8 02 0 450 600 2 0	8 02 0 450 600 4 0
	498 – 501	8 02 0 500 600 2 0	8 02 0 500 600 4 0
	508 – 510	8 02 0 508 600 2 0	8 02 0 508 600 4 0

HKD DOMO-NW-M

NON-PRESSING WATER

- Installation in **pre-installed pipe sleeve** or **core bore in waterproof concrete** (white tank)



The HKD DOMO-NW-M features robust craftsmanship quality.
For sealing multiple pipes and cables in one opening.

- Certified under FHRK test regulation GE 101 (no. G 30 322-2-7) – FHRK 20 D01
- Water-tight against non-pressing water (20 mm seal width)
- Radon-tight – according to FHRK information sheet MB101 meets the requirements for radon precautionary areas
- All metal parts made of stainless steel 1.4301 (V2A/Inox 304), optionally 1.4571 (V4A/Inox 316)
- Seal material is solid EPDM rubber
- Gas-tight



ACCESSORIES

- Aquagard core bore sealant, see Curaflex® accessories


The HKD range is excluded from the DOYMA 25-year warranty.

HKD DOMO-NW-M

Inner diameter of pipe sleeve/core bore [DN in mm]	Outer diameter of pipe/cable [mm]	Number of pipes or cables
80 (79-83)	5 – 25 / 5 – 15	1 – 2 / 1 – 2
	5 – 15	1 – 7
100 (99-103)	10 – 35 / 5 – 20	1 – 2 / 1 – 2
	5 – 25	1 – 4
	10 – 50 / 5 – 20	1 / 1
	10 – 40 / 5 – 20	1 / 1 – 2
	5 – 20	1 – 7
125 (124-128)	10 – 40 / 5 – 30	1 – 2 / 1 – 2
	10 – 35	1 – 4
	5 – 25	1 – 7
150 (149-153)	10 – 50 / 10 – 35	1 – 2 / 1 – 2
	10 – 30	1 – 7
	10 – 50	1 – 3
200 (199-204)	10 – 50 / 5 – 20	1 – 3 / 1 – 4
	10 – 50	1 – 5
	40 – 65	1 – 4

No article numbers. Precise outer diameter and number of pipes and cables must be specified in your order.

HKD DOMO-NW-NK

 NON-PRESSING WATER

- Installation in **pre-installed pipe sleeve** or **core bore in waterproof concrete** (white tank)



The HKD DOMO-NW-NK features robust craftsmanship quality. **For gentle sealing of plastic jacket pipes, cable protection pipes and flexible pre-insulated plastic pipes. Can also be used for twin/element walls.**

- Certified under FHRK test regulation GE 101 (no. G 30 322-2-7) – FHRK 40 D01
- Water-tight against non-pressing water (40 mm seal width)
- radon proof – according to FHRK information sheet MB101
- All metal parts made of stainless steel 1.4301 (V2A/Inox 304), optionally 1.4571 (V4A/Inox 316)
- Seal material is solid EPDM rubber, extra soft
- Gas-tight



ACCESSORIES

- Aquagard core bore sealant, see Curaflex® accessories

The HKD range is excluded from the DOYMA 25-year warranty.

HKD DOMO-NW-NK

Inner diameter of pipe sleeve/core bore [DN in mm]	Outer diameter of pipe/cable d [mm]	V2A Article number	V4A Article number
80 (79 – 83)	11 – 13	8 01 4 012 080 2 0	8 01 4 012 080 4 0
	14 – 16	8 01 4 015 080 2 0	8 01 4 015 080 4 0
	17 – 19	8 01 4 017 080 2 0	8 01 4 017 080 4 0
	20 – 22	8 01 4 022 080 2 0	8 01 4 022 080 4 0
	25 – 27	8 01 4 025 080 2 0	8 01 4 025 080 4 0
	28 – 31	8 01 4 028 080 2 0	8 01 4 028 080 4 0
	32 – 35	8 01 4 032 080 2 0	8 01 4 032 080 4 0
	36 – 40	8 01 4 040 080 2 0	8 01 4 040 080 4 0
100 (98.5 – 103)	12 – 16	8 01 4 015 100 2 0	8 01 4 015 100 4 0
	17 – 21	8 01 4 020 100 2 0	8 01 4 020 100 4 0
	22 – 26	8 01 4 025 100 2 0	8 01 4 025 100 4 0
	27 – 31	8 01 4 028 100 2 0	8 01 4 028 100 4 0
	32 – 35	8 01 4 032 100 2 0	8 01 4 032 100 4 0
	36 – 40	8 01 4 040 100 2 0	8 01 4 040 100 4 0
	41 – 44	8 01 4 042 100 2 0	8 01 4 042 100 4 0
	48 – 51	8 01 4 050 100 2 0	8 01 4 050 100 4 0
	52 – 54	8 01 4 054 100 2 0	8 01 4 054 100 4 0
	55 – 56	8 01 4 056 100 2 0	8 01 4 056 100 4 0
	57 – 57	8 01 4 057 100 2 0	8 01 4 057 100 4 0
	58 – 58	8 01 4 058 100 2 0	8 01 4 058 100 4 0
125 (124 – 128)	60 – 60	8 01 4 060 100 2 0	8 01 4 060 100 4 0
	63 – 63	8 01 4 063 100 2 0	8 01 4 063 100 4 0
	57 – 61	8 01 4 060 125 2 0	8 01 4 060 125 4 0
	62 – 64	8 01 4 063 125 2 0	8 01 4 063 125 4 0
150 (149 – 153)	73 – 75	8 01 4 075 125 2 0	8 01 4 075 125 4 0
	76 – 77	8 01 4 076 125 2 0	8 01 4 076 125 4 0
	57 – 60	8 01 4 060 150 2 0	8 01 4 060 150 4 0
	74 – 77	8 01 4 075 150 2 0	8 01 4 075 150 4 0
	78 – 80	8 01 4 078 150 2 0	8 01 4 078 150 4 0
	88 – 91	8 01 4 090 150 2 0	8 01 4 090 150 4 0
	98 – 100	8 01 4 098 150 2 0	8 01 4 098 150 4 0
	101 – 104	8 01 4 102 150 2 0	8 01 4 102 150 4 0
	108 – 110	8 01 4 110 150 2 0	8 01 4 110 150 4 0
	111 – 115	8 01 4 114 150 2 0	8 01 4 114 150 4 0

Inner diameter of pipe sleeve/core bore [DN in mm]	Outer diameter of pipe/cable d [mm]	V2A Article number	V4A Article number
200 (199 – 204)	108 – 112	8 01 4 110 200 2 0	8 01 4 110 200 4 0
	113 – 115	8 01 4 114 200 2 0	8 01 4 114 200 4 0
	116 – 118	8 01 4 118 200 2 0	8 01 4 118 200 4 0
	123 – 126	8 01 4 125 200 2 0	8 01 4 125 200 4 0
	133 – 136	8 01 4 135 200 2 0	8 01 4 135 200 4 0
	137 – 141	8 01 4 140 200 2 0	8 01 4 140 200 4 0
	142 – 145	8 01 4 144 200 2 0	8 01 4 144 200 4 0
	159 – 160	8 01 4 160 200 2 0	8 01 4 160 200 4 0
250 (247 – 253)	137 – 141	8 01 4 140 250 2 0	8 01 4 140 250 4 0
	142 – 144	8 01 4 144 250 2 0	8 01 4 144 250 4 0
	148 – 152	8 01 4 148 250 2 0	8 01 4 148 250 4 0
	158 – 162	8 01 4 160 250 2 0	8 01 4 160 250 4 0
	168 – 170	8 01 4 170 250 2 0	8 01 4 170 250 4 0
	174 – 177	8 01 4 175 250 2 0	8 01 4 175 250 4 0
	178 – 181	8 01 4 180 250 2 0	8 01 4 180 250 4 0
	200 – 204	8 01 4 200 300 2 0	8 01 4 200 300 4 0
300 (297 – 304)	209 – 212	8 01 4 210 300 2 0	8 01 4 210 300 4 0
	219 – 223	8 01 4 222 300 2 0	8 01 4 222 300 4 0
	224 – 226	8 01 4 225 300 2 0	8 01 4 225 300 4 0
	240 – 244	8 01 4 242 350 2 0	8 01 4 242 350 4 0
350 (347 – 353)	249 – 253	8 01 4 250 350 2 0	8 01 4 250 350 4 0
	271 – 275	8 01 4 271 350 2 0	8 01 4 271 350 4 0
	278 – 280	8 01 4 280 350 2 0	8 01 4 280 350 4 0
	312 – 316	8 01 4 315 400 2 0	8 01 4 315 400 4 0
400 (397 – 403)	322 – 325	8 01 4 324 400 2 0	8 01 4 324 400 4 0
	326 – 329	8 01 4 326 400 2 0	8 01 4 326 400 4 0
	450 (447 – 453)	8 01 4 355 450 2 0	8 01 4 355 450 4 0
500 (497 – 503)	398 – 401	8 01 4 400 500 2 0	8 01 4 400 500 4 0
	406 – 410	8 01 4 406 500 2 0	8 01 4 406 500 4 0
	426 – 430	8 01 4 429 500 2 0	8 01 4 429 500 4 0
600 (597 – 603)	448 – 451	8 01 4 450 600 2 0	8 01 4 450 600 4 0
	498 – 501	8 01 4 500 600 2 0	8 01 4 500 600 4 0
	508 – 510	8 01 4 508 600 2 0	8 01 4 508 600 4 0

HKD DOMO-NW-Z

NON-PRESSING WATER

- Installation in **pre-installed pipe sleeve** or **concrete core bore in structures with tanking membranes** or **thick coating** (black tank)



The HKD DOMO-NW-Z features robust craftsmanship quality. **Supplied with fixed and loose flanges in accordance with DIN 18533.** With GGV triple corrosion protection coating.

- Certified under FHRK test regulation GE 101 (no. G 30 322-2-7) – FHRK 40 D01
- Water-tight against non-pressing water (40 mm seal width)
- Radon-tight – according to FHRK information sheet MB101 meets the requirements for radon precautionary areas
- Mounting from the pressure-facing side (water side)
- All metal parts made of steel with GGV triple corrosion protection coating
- Optionally, all metal parts made of stainless steel 1.4301 (V2A /Inox 304), optionally 1.4571 (V4A /Inox 316)
- Seal material is solid EPDM rubber
- Depending on the tanking membrane, installed with Curaflex® packings (1775) arranged on both sides where there is thin and hard film, or accessories where there is a thick coating (1776): sanding of the contact surfaces of the fixed and loose flange
- Variant: HKD DOMO-NW-Z-K – properties as described above, but pipe tensioned from the non-pressure-facing side
- Gas-tight



ACCESSORIES (OPTIONAL)

- Packings and accessories, see Curaflex® accessories

The HKD range is excluded from the DOYMA 25-year warranty.


HKD DOMO-NW-Z

Inner diameter of pipe sleeve/core bore [DN in mm]	Outer diameter of pipe/cable d [mm]	Article number
80 (79 – 83)	11 – 13	8 03 5 012 080 0 0
	14 – 16	8 03 5 015 080 0 0
	17 – 19	8 03 5 017 080 0 0
	20 – 22	8 03 5 022 080 0 0
	25 – 27	8 03 5 025 080 0 0
	28 – 31	8 03 5 028 080 0 0
	32 – 35	8 03 5 032 080 0 0
	36 – 40	8 03 5 040 080 0 0
100 (99 – 103)	12 – 16	8 03 5 015 100 0 0
	17 – 21	8 03 5 020 100 0 0
	22 – 26	8 03 5 025 100 0 0
	27 – 31	8 03 5 028 100 0 0
	32 – 35	8 03 5 032 100 0 0
	36 – 40	8 03 5 040 100 0 0
	41 – 44	8 03 5 042 100 0 0
	48 – 51	8 03 5 050 100 0 0
	52 – 54	8 03 5 054 100 0 0
	55 – 56	8 03 5 056 100 0 0
	57 – 57	8 03 5 057 100 0 0
	58 – 58	8 03 5 058 100 0 0
	60 – 60	8 03 5 060 100 0 0
	63 – 63	8 03 5 063 100 0 0
125 (124 – 128)	57 – 61	8 03 5 060 125 0 0
	62 – 64	8 03 5 063 125 0 0
	73 – 75	8 03 5 075 125 0 0
	76 – 77	8 03 5 076 125 0 0
150 (149 – 153)	57 – 60	8 03 5 060 150 0 0
	74 – 77	8 03 5 075 150 0 0
	78 – 80	8 03 5 078 150 0 0
	88 – 91	8 03 5 090 150 0 0
	98 – 100	8 03 5 098 150 0 0
	101 – 104	8 03 5 102 150 0 0
	108 – 110	8 03 5 110 150 0 0
	111 – 115	8 03 5 114 150 0 0
200 (199 – 204)	108 – 112	8 03 5 110 200 0 0
	113 – 115	8 03 5 114 200 0 0
	116 – 118	8 03 5 118 200 0 0
	123 – 126	8 03 5 125 200 0 0
	133 – 136	8 03 5 135 200 0 0
	137 – 141	8 03 5 140 200 0 0
	142 – 145	8 03 5 144 200 0 0
	159 – 160	8 03 5 160 200 0 0
250 (247 – 253)	137 – 141	8 03 5 140 250 0 0
	142 – 144	8 03 5 144 250 0 0
	148 – 152	8 03 5 148 250 0 0
	158 – 162	8 03 5 160 250 0 0
	168 – 170	8 03 5 170 250 0 0
	174 – 177	8 03 5 175 250 0 0
	178 – 181	8 03 5 180 250 0 0

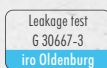
Inner diameter of pipe sleeve/core bore [DN in mm]	Outer diameter of pipe/cable d [mm]	Article number
300 (297 – 304)	200 – 204	8 03 5 200 300 0 0
	209 – 212	8 03 5 210 300 0 0
	219 – 223	8 03 5 222 300 0 0
	224 – 226	8 03 5 225 300 0 0
350 (347 – 353)	240 – 244	8 03 5 242 350 0 0
	249 – 253	8 03 5 250 350 0 0
	271 – 275	8 03 5 271 350 0 0
	278 – 280	8 03 5 280 350 0 0
400 (397 – 403)	312 – 316	8 03 5 315 400 0 0
	322 – 325	8 03 5 324 400 0 0
	326 – 329	8 03 5 326 400 0 0
450 (447 – 453)	353 – 356	8 03 5 355 450 0 0
500 (497 – 503)	398 – 401	8 03 5 400 500 0 0
	406 – 410	8 03 5 406 500 0 0
	426 – 430	8 03 5 429 500 0 0
600 (597 – 603)	448 – 451	8 03 5 450 600 0 0
	498 – 501	8 03 5 500 600 0 0
	508 – 510	8 03 5 508 600 0 0

Sanded version for thick coating available upon request.

HKD DOMO-DW

 PRESSING WATER

- Installation in **pre-installed pipe sleeve** or **core bore in waterproof concrete** (white tank)



The HKD DOMO-DW features robust craftsmanship quality. **The press rings used are made of one piece and cover the rubber gasket over a large area. This ensures an even and reliable force fitting. Completely made of stainless steel V2A.**

- Certified under FHRK test regulation GE 101 (no. G 30 322-2-6) – FHRK 40 LD10
- Water-tight against pressing water (40 mm seal width)
- Radon-tight – according to FHRK information sheet MB101 meets the requirements for radon precautionary areas
- All metal parts made of stainless steel 1.4301 (V2A/Inox 304), optionally 1.4571 (V4A/Inox 316)
- Seal material is solid EPDM rubber, optionally NBR
- Gas-tight



ACCESSORIES

- Aquagard core bore sealant, see Curaflex® accessories

The HKD range is excluded from the DOYMA 25-year warranty.

HKD DOMO-DW

Inner diameter of pipe sleeve/core bore [DN in mm]	Outer diameter of pipe/cable d [mm]	V2A Article number	V4A Article number
80 (79 – 83)	11 – 13	8 03 0 012 080 2 0	8 03 0 012 080 4 0
	14 – 16	8 03 0 015 080 2 0	8 03 0 015 080 4 0
	17 – 19	8 03 0 017 080 2 0	8 03 0 017 080 4 0
	20 – 22	8 03 0 022 080 2 0	8 03 0 022 080 4 0
	25 – 27	8 03 0 025 080 2 0	8 03 0 025 080 4 0
	28 – 31	8 03 0 028 080 2 0	8 03 0 028 080 4 0
	32 – 35	8 03 0 032 080 2 0	8 03 0 032 080 4 0
	36 – 40	8 03 0 040 080 2 0	8 03 0 040 080 4 0
100 (99 – 103)	12 – 16	8 03 0 015 100 2 0	8 03 0 015 100 4 0
	17 – 21	8 03 0 020 100 2 0	8 03 0 020 100 4 0
	22 – 26	8 03 0 025 100 2 0	8 03 0 025 100 4 0
	27 – 31	8 03 0 028 100 2 0	8 03 0 028 100 4 0
	32 – 35	8 03 0 032 100 2 0	8 03 0 032 100 4 0
	36 – 40	8 03 0 040 100 2 0	8 03 0 040 100 4 0
	41 – 44	8 03 0 042 100 2 0	8 03 0 042 100 4 0
	48 – 51	8 03 0 050 100 2 0	8 03 0 050 100 4 0
	52 – 54	8 03 0 054 100 2 0	8 03 0 054 100 4 0
	55 – 56	8 03 0 056 100 2 0	8 03 0 056 100 4 0
	57 – 57	8 03 0 057 100 2 0	8 03 0 057 100 4 0
	58 – 58	8 03 0 058 100 2 0	8 03 0 058 100 4 0
	60 – 60	8 03 0 060 100 2 0	8 03 0 060 100 4 0
	63 – 63	8 03 0 063 100 2 0	8 03 0 063 100 4 0
	57 – 61	8 03 0 060 125 2 0	8 03 0 060 125 4 0
	62 – 64	8 03 0 063 125 2 0	8 03 0 063 125 4 0
125 (124 – 128)	73 – 75	8 03 0 075 125 2 0	8 03 0 075 125 4 0
	76 – 77	8 03 0 076 125 2 0	8 03 0 076 125 4 0
	57 – 60	8 03 0 060 150 2 0	8 03 0 060 150 4 0
	74 – 77	8 03 0 075 150 2 0	8 03 0 075 150 4 0
150 (149 – 153)	78 – 80	8 03 0 078 150 2 0	8 03 0 078 150 4 0
	88 – 91	8 03 0 090 150 2 0	8 03 0 090 150 4 0
	98 – 100	8 03 0 098 150 2 0	8 03 0 098 150 4 0
	101 – 104	8 03 0 102 150 2 0	8 03 0 102 150 4 0
	108 – 110	8 03 0 110 150 2 0	8 03 0 110 150 4 0
	111 – 115	8 03 0 114 150 2 0	8 03 0 114 150 4 0

Inner diameter of pipe sleeve/core bore [DN in mm]	Outer diameter of pipe/cable d [mm]	V2A Article number	V4A Article number
200 (199 – 204)	108 – 112	8 03 0 110 200 2 0	8 03 0 110 200 4 0
	113 – 115	8 03 0 114 200 2 0	8 03 0 114 200 4 0
	116 – 118	8 03 0 118 200 2 0	8 03 0 118 200 4 0
	123 – 126	8 03 0 125 200 2 0	8 03 0 125 200 4 0
	133 – 136	8 03 0 135 200 2 0	8 03 0 135 200 4 0
	137 – 141	8 03 0 140 200 2 0	8 03 0 140 200 4 0
	142 – 145	8 03 0 144 200 2 0	8 03 0 144 200 4 0
	159 – 160	8 03 0 160 200 2 0	8 03 0 160 200 4 0
250 (247 – 253)	137 – 141	8 03 0 140 250 2 0	8 03 0 140 250 4 0
	142 – 144	8 03 0 144 250 2 0	8 03 0 144 250 4 0
	148 – 152	8 03 0 148 250 2 0	8 03 0 148 250 4 0
	158 – 162	8 03 0 160 250 2 0	8 03 0 160 250 4 0
	168 – 170	8 03 0 170 250 2 0	8 03 0 170 250 4 0
	174 – 177	8 03 0 175 250 2 0	8 03 0 175 250 4 0
	178 – 181	8 03 0 180 250 2 0	8 03 0 180 250 4 0
	200 – 204	8 03 0 200 300 2 0	8 03 0 200 300 4 0
300 (297 – 304)	209 – 212	8 03 0 210 300 2 0	8 03 0 210 300 4 0
	219 – 223	8 03 0 222 300 2 0	8 03 0 222 300 4 0
	224 – 226	8 03 0 225 300 2 0	8 03 0 225 300 4 0
	240 – 244	8 03 0 242 350 2 0	8 03 0 242 350 4 0
350 (347 – 353)	249 – 253	8 03 0 250 350 2 0	8 03 0 250 350 4 0
	271 – 275	8 03 0 271 350 2 0	8 03 0 271 350 4 0
	278 – 280	8 03 0 280 350 2 0	8 03 0 280 350 4 0
	312 – 316	8 03 0 315 400 2 0	8 03 0 315 400 4 0
400 (397 – 403)	322 – 325	8 03 0 324 400 2 0	8 03 0 324 400 4 0
	326 – 329	8 03 0 326 400 2 0	8 03 0 326 400 4 0
	450 (447 – 453)	8 03 0 355 450 2 0	8 03 0 355 450 4 0
500 (497 – 503)	398 – 401	8 03 0 400 500 2 0	8 03 0 400 500 4 0
	406 – 410	8 03 0 406 500 2 0	8 03 0 406 500 4 0
	426 – 430	8 03 0 429 500 2 0	8 03 0 429 500 4 0
600 (597 – 603)	448 – 451	8 03 0 450 600 2 0	8 03 0 450 600 4 0
	498 – 501	8 03 0 500 600 2 0	8 03 0 500 600 4 0
	508 – 510	8 03 0 508 600 2 0	8 03 0 508 600 4 0

HKD DOMO-DW-T



PRESSING WATER

- Installation in **pre-installed pipe sleeve** or **core bore in waterproof concrete** (white tank)



The HKD DOMO-DW-T features robust craftsmanship quality. **The split version for retrofitting is hinged and can be used on pipes and cables that have already been installed.**

- Certified under FHRK test regulation GE 101 (no. G 30 322-2-6) – FHRK 40 LD10
- Water-tight against pressing water (40 mm seal width)
- Radon-tight – according to FHRK information sheet MB101 meets the requirements for radon precautionary areas
- Hinged version, for pipes and cables that are already installed
- All metal parts made of stainless steel 1.4301 (V2A/Inox 304), optionally 1.4571 (V4A/Inox 316)
- Seal material is solid EPDM rubber, optionally NBR
- Gas-tight



ACCESSORIES

- Aquagard core bore sealant, see Curaflex® accessories

The HKD range is excluded from the DOYMA 25-year warranty.

HKD DOMO-DW-T

Inner diameter of pipe sleeve/core bore [DN in mm]	Outer diameter of pipe/cable d [mm]	V2A Article number	V4A Article number
80 (79 – 83)	11 – 13	8 03 2 012 080 2 0	8 03 2 012 080 4 0
	14 – 16	8 03 2 015 080 2 0	8 03 2 015 080 4 0
	17 – 19	8 03 2 017 080 2 0	8 03 2 017 080 4 0
	20 – 22	8 03 2 022 080 2 0	8 03 2 022 080 4 0
	25 – 27	8 03 2 025 080 2 0	8 03 2 025 080 4 0
	28 – 31	8 03 2 028 080 2 0	8 03 2 028 080 4 0
	32 – 35	8 03 2 032 080 2 0	8 03 2 032 080 4 0
	36 – 40	8 03 2 040 080 2 0	8 03 2 040 080 4 0
100 (99 – 103)	12 – 16	8 03 2 015 100 2 0	8 03 2 015 100 4 0
	17 – 21	8 03 2 020 100 2 0	8 03 2 020 100 4 0
	22 – 26	8 03 2 025 100 2 0	8 03 2 025 100 4 0
	27 – 31	8 03 2 028 100 2 0	8 03 2 028 100 4 0
	32 – 35	8 03 2 032 100 2 0	8 03 2 032 100 4 0
	36 – 40	8 03 2 040 100 2 0	8 03 2 040 100 4 0
	41 – 44	8 03 2 042 100 2 0	8 03 2 042 100 4 0
	48 – 51	8 03 2 050 100 2 0	8 03 2 050 100 4 0
	52 – 54	8 03 2 054 100 2 0	8 03 2 054 100 4 0
	55 – 56	8 03 2 056 100 2 0	8 03 2 056 100 4 0
	57 – 57	8 03 2 057 100 2 0	8 03 2 057 100 4 0
	58 – 58	8 03 2 058 100 2 0	8 03 2 058 100 4 0
	60 – 60	8 03 2 060 100 2 0	8 03 2 060 100 4 0
	63 – 63	8 03 2 063 100 2 0	8 03 2 063 100 4 0
125 (124 – 128)	57 – 61	8 03 2 060 125 2 0	8 03 2 060 125 4 0
	62 – 64	8 03 2 063 125 2 0	8 03 2 063 125 4 0
	73 – 75	8 03 2 075 125 2 0	8 03 2 075 125 4 0
	76 – 77	8 03 2 076 125 2 0	8 03 2 076 125 4 0
150 (149 – 153)	57 – 60	8 03 2 060 150 2 0	8 03 2 060 150 4 0
	74 – 77	8 03 2 075 150 2 0	8 03 2 075 150 4 0
	78 – 80	8 03 2 078 150 2 0	8 03 2 078 150 4 0
	88 – 91	8 03 2 090 150 2 0	8 03 2 090 150 4 0
	98 – 100	8 03 2 098 150 2 0	8 03 2 098 150 4 0
	101 – 104	8 03 2 102 150 2 0	8 03 2 102 150 4 0
	108 – 110	8 03 2 110 150 2 0	8 03 2 110 150 4 0
	111 – 115	8 03 2 114 150 2 0	8 03 2 114 150 4 0

Inner diameter of pipe sleeve/core bore [DN in mm]	Outer diameter of pipe/cable d [mm]	V2A Article number	V4A Article number
200 (199 – 204)	108 – 112	8 03 2 110 200 2 0	8 03 2 110 200 4 0
	113 – 115	8 03 2 114 200 2 0	8 03 2 114 200 4 0
	116 – 118	8 03 2 118 200 2 0	8 03 2 118 200 4 0
	123 – 126	8 03 2 125 200 2 0	8 03 2 125 200 4 0
	133 – 136	8 03 2 135 200 2 0	8 03 2 135 200 4 0
	137 – 141	8 03 2 140 200 2 0	8 03 2 140 200 4 0
	142 – 145	8 03 2 144 200 2 0	8 03 2 144 200 4 0
	159 – 160	8 03 2 160 200 2 0	8 03 2 160 200 4 0
250 (247 – 253)	137 – 141	8 03 2 140 250 2 0	8 03 2 140 250 4 0
	142 – 144	8 03 2 144 250 2 0	8 03 2 144 250 4 0
	148 – 152	8 03 2 148 250 2 0	8 03 2 148 250 4 0
	158 – 162	8 03 2 160 250 2 0	8 03 2 160 250 4 0
	168 – 170	8 03 2 170 250 2 0	8 03 2 170 250 4 0
	174 – 177	8 03 2 175 250 2 0	8 03 2 175 250 4 0
	178 – 181	8 03 2 180 250 2 0	8 03 2 180 250 4 0
300 (297 – 304)	200 – 204	8 03 2 200 300 2 0	8 03 2 200 300 4 0
	209 – 212	8 03 2 210 300 2 0	8 03 2 210 300 4 0
	219 – 223	8 03 2 222 300 2 0	8 03 2 222 300 4 0
	224 – 226	8 03 2 225 300 2 0	8 03 2 225 300 4 0
350 (347 – 353)	240 – 244	8 03 2 242 350 2 0	8 03 2 242 350 4 0
	249 – 253	8 03 2 250 350 2 0	8 03 2 250 350 4 0
	271 – 275	8 03 2 271 350 2 0	8 03 2 271 350 4 0
	278 – 280	8 03 2 280 350 2 0	8 03 2 280 350 4 0
400 (397 – 403)	312 – 316	8 03 2 315 400 2 0	8 03 2 315 400 4 0
	322 – 325	8 03 2 324 400 2 0	8 03 2 324 400 4 0
	326 – 329	8 03 2 326 400 2 0	8 03 2 326 400 4 0
450 (447 – 453)	353 – 356	8 03 2 355 450 2 0	8 03 2 355 450 4 0
500 (497 – 503)	398 – 401	8 03 2 400 500 2 0	8 03 2 400 500 4 0
	406 – 410	8 03 2 406 500 2 0	8 03 2 406 500 4 0
	426 – 430	8 03 2 429 500 2 0	8 03 2 429 500 4 0
600 (597 – 603)	448 – 451	8 03 2 450 600 2 0	8 03 2 450 600 4 0
	498 – 501	8 03 2 500 600 2 0	8 03 2 500 600 4 0
	508 – 510	8 03 2 508 600 2 0	8 03 2 508 600 4 0

HKD DOMO-DW-B

PRESSING WATER

- Installation in **pre-installed pipe sleeve** or **core bore in waterproof concrete** (white tank)



The HKD DOMO-DW-B features robust craftsmanship quality.
Supplied as a plug seal for safe sealing of an opening.

- Certified under FHRK test regulation GE 101 (no. G 30 322-2-6) – FHRK 40 LD10
- Water-tight against pressing water (40 mm seal width)
- Radon-tight – according to FHRK information sheet MB101 meets the requirements for radon precautionary areas
- All metal parts made of stainless steel 1.4301 (V2A/Inox 304), optionally 1.4571 (V4A/Inox 316)
- Seal material is solid EPDM rubber, optionally NBR
- Gas-tight



ACCESSORIES

- Aquagard core bore sealant, see Curaflex® accessories

The HKD range is excluded from the DOYMA 25-year warranty.



HKD DOMO-DW-B

Inner diameter of pipe sleeve/core bore [DN in mm]	V2A Article number	V4A Article number
80 (79 – 83)	8 03 0 000 080 2 0	8 03 0 000 080 4 0
100 (99 – 103)	8 03 0 000 100 2 0	8 03 0 000 100 4 0
125 (124 – 128)	8 03 0 000 125 2 0	8 03 0 000 125 4 0
150 (149 – 153)	8 03 0 000 150 2 0	8 03 0 000 150 4 0
200 (199 – 204)	8 03 0 000 200 2 0	8 03 0 000 200 4 0
250 (247 – 253)	8 03 0 000 250 2 0	8 03 0 000 250 4 0
300 (297 – 304)	8 03 0 000 300 2 0	8 03 0 000 300 4 0
350 (347 – 353)	8 03 0 000 350 2 0	8 03 0 000 350 4 0
400 (397 – 403)	8 03 0 000 400 2 0	8 03 0 000 400 4 0
450 (447 – 453)	8 03 0 000 450 2 0	8 03 0 000 450 4 0
500 (497 – 503)	8 03 0 000 500 2 0	8 03 0 000 500 4 0
600 (597 – 603)	8 03 0 000 600 2 0	8 03 0 000 600 4 0

All of the special seals deviating from the standard are delivered as type HKD DISO with 40 mm EPDM elastomer, with 2 × 40 mm EPDM elastomer for DN 800 and higher, for pressing and non-pressing water, and in stainless steel 1.4301 (V2A / Inox 304). The HKD DISO is optionally also available in stainless steel 1.4571 (V4A / Inox 316) and with other elastomer compounds, such as NBR.



HKD DOMO-DW-FL



PRESSING WATER

- Installation in **pre-installed pipe sleeve** or **core bore in waterproof concrete** (white tank)



The HKD DOMO-DW-FL features robust craftsmanship quality.
Supplied with large ring for accommodating one-sided compressive loads and for axial mounting.

- Certified under FHRK test regulation GE 101 (no. G 30 322-2-6) – FHRK 40 LD10
- Water-tight against pressing water (40 mm seal width)
- Radon-tight – according to FHRK information sheet MB101 meets the requirements for radon precautionary areas
- Mounting from the pressure-facing side (water side)
- All metal parts made of stainless steel 1.4301 (V2A/Inox 304), optionally 1.4571 (V4A/Inox 316)
- Seal material is solid EPDM rubber, optionally NBR
- Variant: HKD DOMO-DW-FL-K
Properties as described above, but with mounting from the non-pressure-facing side
- Gas-tight



ACCESSORIES

- Aquagard core bore sealant, see Curaflex® accessories

The HKD range is excluded from the DOYMA 25-year warranty.

HKD DOMO-DW-FL

Inner diameter of pipe sleeve/core bore [DN in mm]	Outer diameter of pipe/cable d [mm]	V2A Article number	V4A Article number
80 (79 – 83)	11 – 13	8 04 0 012 080 2 0	8 04 0 012 080 4 0
	14 – 16	8 04 0 015 080 2 0	8 04 0 015 080 4 0
	17 – 19	8 04 0 017 080 2 0	8 04 0 017 080 4 0
	20 – 22	8 04 0 022 080 2 0	8 04 0 022 080 4 0
	25 – 27	8 04 0 025 080 2 0	8 04 0 025 080 4 0
	28 – 31	8 04 0 028 080 2 0	8 04 0 028 080 4 0
	32 – 35	8 04 0 032 080 2 0	8 04 0 032 080 4 0
	36 – 40	8 04 0 040 080 2 0	8 04 0 040 080 4 0
100 (99 – 103)	12 – 16	8 04 0 015 100 2 0	8 04 0 015 100 4 0
	17 – 21	8 04 0 020 100 2 0	8 04 0 020 100 4 0
	22 – 26	8 04 0 025 100 2 0	8 04 0 025 100 4 0
	27 – 31	8 04 0 028 100 2 0	8 04 0 028 100 4 0
	32 – 35	8 04 0 032 100 2 0	8 04 0 032 100 4 0
	36 – 40	8 04 0 040 100 2 0	8 04 0 040 100 4 0
	41 – 44	8 04 0 042 100 2 0	8 04 0 042 100 4 0
	48 – 51	8 04 0 050 100 2 0	8 04 0 050 100 4 0
	52 – 54	8 04 0 054 100 2 0	8 04 0 054 100 4 0
	55 – 56	8 04 0 056 100 2 0	8 04 0 056 100 4 0
	57 – 57	8 04 0 057 100 2 0	8 04 0 057 100 4 0
	58 – 58	8 04 0 058 100 2 0	8 04 0 058 100 4 0
	60 – 60	8 04 0 060 100 2 0	8 04 0 060 100 4 0
	63 – 63	8 04 0 063 100 2 0	8 04 0 063 100 4 0
	57 – 61	8 04 0 060 125 2 0	8 04 0 060 125 4 0
	62 – 64	8 04 0 063 125 2 0	8 04 0 063 125 4 0
125 (124 – 128)	73 – 75	8 04 0 075 125 2 0	8 04 0 075 125 4 0
	76 – 77	8 04 0 076 125 2 0	8 04 0 076 125 4 0
	57 – 60	8 04 0 060 150 2 0	8 04 0 060 150 4 0
150 (149 – 153)	74 – 77	8 04 0 075 150 2 0	8 04 0 075 150 4 0
	78 – 80	8 04 0 078 150 2 0	8 04 0 078 150 4 0
	88 – 91	8 04 0 090 150 2 0	8 04 0 090 150 4 0
	98 – 100	8 04 0 098 150 2 0	8 04 0 098 150 4 0
	101 – 104	8 04 0 102 150 2 0	8 04 0 102 150 4 0
	108 – 110	8 04 0 110 150 2 0	8 04 0 110 150 4 0
	111 – 115	8 04 0 114 150 2 0	8 04 0 114 150 4 0

Inner diameter of pipe sleeve/core bore [DN in mm]	Outer diameter of pipe/cable d [mm]	V2A Article number	V4A Article number
200 (199 – 204)	108 – 112	8 04 0 110 200 2 0	8 04 0 110 200 4 0
	113 – 115	8 04 0 114 200 2 0	8 04 0 114 200 4 0
	116 – 118	8 04 0 118 200 2 0	8 04 0 118 200 4 0
	123 – 126	8 04 0 125 200 2 0	8 04 0 125 200 4 0
	133 – 136	8 04 0 135 200 2 0	8 04 0 135 200 4 0
	137 – 141	8 04 0 140 200 2 0	8 04 0 140 200 4 0
	142 – 145	8 04 0 144 200 2 0	8 04 0 144 200 4 0
	159 – 160	8 04 0 160 200 2 0	8 04 0 160 200 4 0
250 (247 – 253)	137 – 141	8 04 0 140 250 2 0	8 04 0 140 250 4 0
	142 – 144	8 04 0 144 250 2 0	8 04 0 144 250 4 0
	148 – 152	8 04 0 148 250 2 0	8 04 0 148 250 4 0
	158 – 162	8 04 0 160 250 2 0	8 04 0 160 250 4 0
	168 – 170	8 04 0 170 250 2 0	8 04 0 170 250 4 0
	174 – 177	8 04 0 175 250 2 0	8 04 0 175 250 4 0
	178 – 181	8 04 0 180 250 2 0	8 04 0 180 250 4 0
	200 – 204	8 04 0 200 300 2 0	8 04 0 200 300 4 0
300 (297 – 304)	209 – 212	8 04 0 210 300 2 0	8 04 0 210 300 4 0
	219 – 223	8 04 0 222 300 2 0	8 04 0 222 300 4 0
	224 – 226	8 04 0 225 300 2 0	8 04 0 225 300 4 0
350 (347 – 353)	240 – 244	8 04 0 242 350 2 0	8 04 0 242 350 4 0
	249 – 253	8 04 0 250 350 2 0	8 04 0 250 350 4 0
	271 – 275	8 04 0 271 350 2 0	8 04 0 271 350 4 0
400 (397 – 403)	278 – 280	8 04 0 280 350 2 0	8 04 0 280 350 4 0
	312 – 316	8 04 0 315 400 2 0	8 04 0 315 400 4 0
	322 – 325	8 04 0 324 400 2 0	8 04 0 324 400 4 0
450 (447 – 453)	326 – 329	8 04 0 326 400 2 0	8 04 0 326 400 4 0
	353 – 356	8 04 0 355 450 2 0	8 04 0 355 450 4 0
	398 – 401	8 04 0 400 500 2 0	8 04 0 400 500 4 0
500 (497 – 503)	406 – 410	8 04 0 406 500 2 0	8 04 0 406 500 4 0
	426 – 430	8 04 0 429 500 2 0	8 04 0 429 500 4 0
	448 – 451	8 04 0 450 600 2 0	8 04 0 450 600 4 0
600 (597 – 603)	498 – 501	8 04 0 500 600 2 0	8 04 0 500 600 4 0
	508 – 510	8 04 0 508 600 2 0	8 04 0 508 600 4 0

For further dimensions per DN, see page 2. All of the special seals deviating from the standard are delivered as type HKD DISO with 40 mm EPDM elastomer, with 2 × 40 mm EPDM elastomer for DN 800 and higher, for pressing and non-pressing water, and in stainless steel 1.4301 (V2A / Inox 304). The HKD DISO is optionally also available in stainless steel 1.4571 (V4A / Inox 316) and with other elastomer compounds, such as NBR.

HKD DOMO-DW-M



PRESSING WATER

- Installation in **pre-installed pipe sleeve** or **core bore in waterproof concrete** (white tank)



The HKD DOMO-DW-M features robust craftsmanship quality.
For sealing multiple pipes and cables in one opening.

- Certified under FHRK test regulation GE 101 (no. G 30 322-2-6) – FHRK 40 LD10
- Water-tight against pressing water (40 mm seal width)
- Radon-tight – according to FHRK information sheet MB101 meets the requirements for radon precautionary areas
- All metal parts made of stainless steel 1.4301 (V2A/Inox 304), optionally 1.4571 (V4A/Inox 316)
- Seal material is solid EPDM rubber, optionally NBR
- Gas-tight



ACCESSORIES

- Aquagard core bore sealant, see Curaflex® accessories

The HKD range is excluded from the DOYMA 25-year warranty.



HKD DOMO-DW-M

Inner diameter of pipe sleeve/core bore [DN in mm]	Outer diameter of pipe/cable [mm]	Number of pipes or cables
80 (79 – 83)	5 – 25 / 5 – 15	1 – 2 / 1 – 2
	5 – 15	1 – 7
100 (99 – 103)	10 – 35 / 5 – 20	1 – 2 / 1 – 2
	5 – 25	1 – 4
	10 – 50 / 5 – 20	1 / 1
	10 – 40 / 5 – 20	1 / 1 – 2
	5 – 20	1 – 7
125 (124 – 128)	10 – 40 / 5 – 30	1 – 2 / 1 – 2
	10 – 35	1 – 4
	5 – 25	1 – 7
150 (149 – 153)	10 – 50 / 10 – 35	1 – 2 / 1 – 2
	10 – 30	1 – 7
	10 – 50	1 – 3
200 (199 – 204)	10 – 50 / 5 – 20	1 – 3 / 1 – 4
	10 – 50	1 – 5
	40 – 65	1 – 4

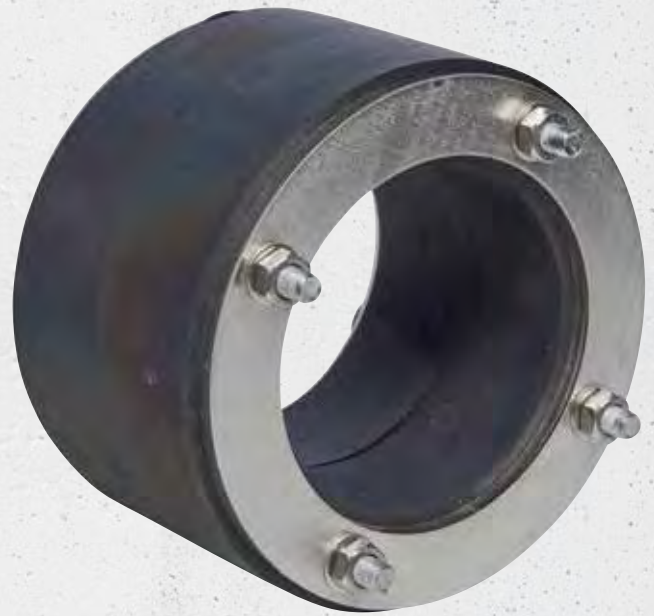
No article numbers. Precise outer diameter and number of pipes and cables must be specified in your order.

HKD DOMO-DW-NK



PRESSING WATER

- Installation in **pre-installed pipe sleeve** or **core bore in waterproof concrete** (white tank)



The HKD DOMO-DW-NK features robust craftsmanship quality. **For gentle sealing of plastic jacket pipes, cable protection pipes and flexible pre-insulated plastic pipes. Can also be used for twin/element walls.**

- Certified under FHRK test regulation GE 101 (no. G 30 322-2-6) – FHRK 80 LD10
- Water-tight against pressing water (80 mm seal width)
- radon proof – according to FHRK information sheet MB101
- All metal parts made of stainless steel 1.4301 (V2A/Inox 304), optionally 1.4571 (V4A/Inox 316)
- Seal material is solid EPDM rubber, extra soft
- Gas-tight



ACCESSORIES

- Aquagard core bore sealant, see Curaflex® accessories

The HKD range is excluded from the DOYMA 25-year warranty.

HKD DOMO-DW-NK

Inner diameter of pipe sleeve/core bore [DN in mm]	Outer diameter of pipe/cable d [mm]	V2A Article number	V4A Article number
80 (79 – 83)	11 – 13	8 03 4 012 080 2 0	8 03 4 012 080 4 0
	14 – 16	8 03 4 015 080 2 0	8 03 4 015 080 4 0
	17 – 19	8 03 4 017 080 2 0	8 03 4 017 080 4 0
	20 – 22	8 03 4 022 080 2 0	8 03 4 022 080 4 0
	25 – 27	8 03 4 025 080 2 0	8 03 4 025 080 4 0
	28 – 31	8 03 4 028 080 2 0	8 03 4 028 080 4 0
	32 – 35	8 03 4 032 080 2 0	8 03 4 032 080 4 0
	36 – 40	8 03 4 040 080 2 0	8 03 4 040 080 4 0
100 (99 – 103)	12 – 16	8 03 4 015 100 2 0	8 03 4 015 100 4 0
	17 – 21	8 03 4 020 100 2 0	8 03 4 020 100 4 0
	22 – 26	8 03 4 025 100 2 0	8 03 4 025 100 4 0
	27 – 31	8 03 4 028 100 2 0	8 03 4 028 100 4 0
	32 – 35	8 03 4 032 100 2 0	8 03 4 032 100 4 0
	36 – 40	8 03 4 040 100 2 0	8 03 4 040 100 4 0
	41 – 44	8 03 4 042 100 2 0	8 03 4 042 100 4 0
	48 – 51	8 03 4 050 100 2 0	8 03 4 050 100 4 0
	52 – 54	8 03 4 054 100 2 0	8 03 4 054 100 4 0
	55 – 56	8 03 4 056 100 2 0	8 03 4 056 100 4 0
	57 – 57	8 03 4 057 100 2 0	8 03 4 057 100 4 0
	58 – 58	8 03 4 058 100 2 0	8 03 4 058 100 4 0
125 (124 – 128)	60 – 60	8 03 4 060 100 2 0	8 03 4 060 100 4 0
	63 – 63	8 03 4 063 100 2 0	8 03 4 063 100 4 0
	57 – 61	8 03 4 060 125 2 0	8 03 4 060 125 4 0
	62 – 64	8 03 4 063 125 2 0	8 03 4 063 125 4 0
150 (149 – 153)	73 – 75	8 03 4 075 125 2 0	8 03 4 075 125 4 0
	76 – 77	8 03 4 076 125 2 0	8 03 4 076 125 4 0
	57 – 60	8 03 4 060 150 2 0	8 03 4 060 150 4 0
	74 – 77	8 03 4 075 150 2 0	8 03 4 075 150 4 0
	78 – 80	8 03 4 078 150 2 0	8 03 4 078 150 4 0
	88 – 91	8 03 4 090 150 2 0	8 03 4 090 150 4 0
	98 – 100	8 03 4 098 150 2 0	8 03 4 098 150 4 0
	101 – 104	8 03 4 102 150 2 0	8 03 4 102 150 4 0
200 (199 – 204)	108 – 110	8 03 4 110 150 2 0	8 03 4 110 150 4 0
	111 – 115	8 03 4 114 150 2 0	8 03 4 114 150 4 0
	108 – 112	8 03 4 110 200 2 0	8 03 4 110 200 4 0
	113 – 115	8 03 4 114 200 2 0	8 03 4 114 200 4 0
	116 – 118	8 03 4 118 200 2 0	8 03 4 118 200 4 0
	123 – 126	8 03 4 125 200 2 0	8 03 4 125 200 4 0
	133 – 136	8 03 4 135 200 2 0	8 03 4 135 200 4 0
	137 – 141	8 03 4 140 200 2 0	8 03 4 140 200 4 0
	142 – 145	8 03 4 144 200 2 0	8 03 4 144 200 4 0
	159 – 160	8 03 4 160 200 2 0	8 03 4 160 200 4 0

Inner diameter of pipe sleeve/core bore [DN in mm]	Outer diameter of pipe/cable d [mm]	V2A Article number	V4A Article number
250 (247 – 253)	137 – 141	8 03 4 140 250 2 0	8 03 4 140 250 4 0
	142 – 144	8 03 4 144 250 2 0	8 03 4 144 250 4 0
	148 – 152	8 03 4 148 250 2 0	8 03 4 148 250 4 0
	158 – 162	8 03 4 160 250 2 0	8 03 4 160 250 4 0
	168 – 170	8 03 4 170 250 2 0	8 03 4 170 250 4 0
	174 – 177	8 03 4 175 250 2 0	8 03 4 175 250 4 0
	178 – 181	8 03 4 180 250 2 0	8 03 4 180 250 4 0
	200 – 204	8 03 4 200 300 2 0	8 03 4 200 300 4 0
300 (297 – 304)	209 – 212	8 03 4 210 300 2 0	8 03 4 210 300 4 0
	219 – 223	8 03 4 222 300 2 0	8 03 4 222 300 4 0
	224 – 226	8 03 4 225 300 2 0	8 03 4 225 300 4 0
350 (347 – 353)	240 – 244	8 03 4 242 350 2 0	8 03 4 242 350 4 0
	249 – 253	8 03 4 250 350 2 0	8 03 4 250 350 4 0
	271 – 275	8 03 4 271 350 2 0	8 03 4 271 350 4 0
	278 – 280	8 03 4 280 350 2 0	8 03 4 280 350 4 0
400 (397 – 403)	312 – 316	8 03 4 315 400 2 0	8 03 4 315 400 4 0
	322 – 325	8 03 4 324 400 2 0	8 03 4 324 400 4 0
	326 – 329	8 03 4 326 400 2 0	8 03 4 326 400 4 0
450 (447 – 453)	353 – 356	8 03 4 355 450 2 0	8 03 4 355 450 4 0
500 (497 – 503)	398 – 401	8 03 4 400 500 2 0	8 03 4 400 500 4 0
	406 – 410	8 03 4 406 500 2 0	8 03 4 406 500 4 0
	426 – 430	8 03 4 429 500 2 0	8 03 4 429 500 4 0
600 (597 – 603)	448 – 451	8 03 4 450 600 2 0	8 03 4 450 600 4 0
	498 – 501	8 03 4 500 600 2 0	8 03 4 500 600 4 0
	508 – 510	8 03 4 508 600 2 0	8 03 4 508 600 4 0

HKD DOMO-DW-Z



PRESSING WATER

- Installation in **pre-installed pipe sleeve** or **concrete core bore in structures with tanking membranes** or **thick coating** (black tank)



The HKD DOMO-DW-Z features robust craftsmanship quality. **Supplied with fixed and loose flanges in accordance with DIN 18533.** With GGV triple corrosion protection coating.

- Certified under FHRK test regulation GE 101 (no. G 30 322-2-6) – FHRK 40 LD10
- Water-tight against pressing water (40 mm seal width)
- Radon-tight – according to FHRK information sheet MB101 meets the requirements for radon precautionary areas
- Mounting from the pressure-facing side (water side)
- All metal parts made of steel with GGV triple corrosion protection coating
- Optionally, all metal parts made of stainless steel 1.4301 (V2A /Inox 304), optionally 1.4571 (V4A /Inox 316)
- Seal material is solid EPDM rubber, optionally NBR
- Depending on the tanking membrane, installed with Curaflex® packings (1775) arranged on both sides where there is thin and hard film, or accessories where there is a thick coating (1776): sanding of the contact surfaces of the fixed and loose flange
- Variant: HKD DOMO-DW-Z-K – properties as described above, but pipe tensioned from the non-pressure-facing side
- Gas-tight

ACCESSORIES (OPTIONAL)



- Packings and accessories, see Curaflex® accessories

The HKD range is excluded from the DOYMA 25-year warranty.

HKD DOMO-DW-Z

Inner diameter of pipe sleeve/core bore [DN in mm]	Outer diameter of pipe/cable d [mm]	Article number
80 (79 – 83)	11 – 13	8 03 6 012 080 0 0
	14 – 16	8 03 6 015 080 0 0
	17 – 19	8 03 6 017 080 0 0
	20 – 22	8 03 6 022 080 0 0
	25 – 27	8 03 6 025 080 0 0
	28 – 31	8 03 6 028 080 0 0
	32 – 35	8 03 6 032 080 0 0
	36 – 40	8 03 6 040 080 0 0
100 (99 – 103)	12 – 16	8 03 6 015 100 0 0
	17 – 21	8 03 6 020 100 0 0
	22 – 26	8 03 6 025 100 0 0
	27 – 31	8 03 6 028 100 0 0
	32 – 35	8 03 6 032 100 0 0
	36 – 40	8 03 6 040 100 0 0
	41 – 44	8 03 6 042 100 0 0
	48 – 51	8 03 6 050 100 0 0
	52 – 54	8 03 6 054 100 0 0
	55 – 56	8 03 6 056 100 0 0
	57 – 57	8 03 6 057 100 0 0
	58 – 58	8 03 6 058 100 0 0
	60 – 60	8 03 6 060 100 0 0
	63 – 63	8 03 6 063 100 0 0
125 (124 – 128)	57 – 61	8 03 6 060 125 0 0
	62 – 64	8 03 6 063 125 0 0
	73 – 75	8 03 6 075 125 0 0
	76 – 77	8 03 6 076 125 0 0
150 (149 – 153)	57 – 60	8 03 6 060 150 0 0
	74 – 77	8 03 6 075 150 0 0
	78 – 80	8 03 6 078 150 0 0
	88 – 91	8 03 6 090 150 0 0
	98 – 100	8 03 6 098 150 0 0
	101 – 104	8 03 6 102 150 0 0
	108 – 110	8 03 6 110 150 0 0
	111 – 115	8 03 6 114 150 0 0
200 (199 – 204)	108 – 112	8 03 6 110 200 0 0
	113 – 115	8 03 6 114 200 0 0
	116 – 118	8 03 6 118 200 0 0
	123 – 126	8 03 6 125 200 0 0
	133 – 136	8 03 6 135 200 0 0
	137 – 141	8 03 6 140 200 0 0
	142 – 145	8 03 6 144 200 0 0
	159 – 160	8 03 6 160 200 0 0
250 (247 – 253)	137 – 141	8 03 6 140 250 0 0
	142 – 144	8 03 6 144 250 0 0
	148 – 152	8 03 6 148 250 0 0
	158 – 162	8 03 6 160 250 0 0
	168 – 170	8 03 6 170 250 0 0
	174 – 177	8 03 6 175 250 0 0
	178 – 181	8 03 6 180 250 0 0

Inner diameter of pipe sleeve/core bore [DN in mm]	Outer diameter of pipe/cable d [mm]	Article number
300 (297 – 304)	200 – 204	8 03 6 200 300 0 0
	209 – 212	8 03 6 210 300 0 0
	219 – 223	8 03 6 222 300 0 0
	224 – 226	8 03 6 225 300 0 0
350 (347 – 353)	240 – 244	8 03 6 242 350 0 0
	249 – 253	8 03 6 250 350 0 0
	271 – 275	8 03 6 271 350 0 0
	278 – 280	8 03 6 280 350 0 0
400 (397 – 403)	312 – 316	8 03 6 315 400 0 0
	322 – 325	8 03 6 324 400 0 0
	326 – 329	8 03 6 326 400 0 0
450 (447 – 453)	353 – 356	8 03 6 355 450 0 0
500 (497 – 503)	398 – 401	8 03 6 400 500 0 0
	406 – 410	8 03 6 406 500 0 0
	426 – 430	8 03 6 429 500 0 0
600 (597 – 603)	448 – 451	8 03 6 450 600 0 0
	498 – 501	8 03 6 500 600 0 0
	508 – 510	8 03 6 508 600 0 0

Sanded version for thick coating available upon request.

HKD DOMO-V / HKD DOMO-VT

PRESSING WATER

- Installation in **pre-installed pipe sleeve** or **core bore in waterproof concrete** (white tank)



The HKD DOMO-V models can be variably adjusted to the diameter of the pipe or cable. One HKD DOMO-V type can therefore replace up to 10 standard sizes. The HKD DOMO-VT type is a hinged version for use on pipes and cables that have already been installed. It is adapted to the relevant diameter by simply removing the rubber elements that are not required.

- Certified under FHRK test regulation GE 101 (no. G 30 322-2-6) – FHRK 40 LD10
- Water-tight against pressing water
- Radon-tight – according to FHRK information sheet MB101 meets the requirements for radon precautionary areas
- HKD DOMO-VT: hinged version, for pipes and cables that are already installed with pipe sleeve/core bore DN 100
- All metal parts made of stainless steel 1.4301 (V2A/Inox 304), optionally 1.4571 (V4A/Inox 316)
- Seal material: EPDM 40 mm wide
- Gas-tight



ACCESSORIES

- Aquagard core bore sealant, see Curaflex® accessories

The HKD range is excluded from the DOYMA 25-year warranty.



HKD DOMO-V/HKD DOMO-VT

Type	Inner diameter of pipe sleeve/core bore [DN in mm]	Outer diameter of pipe/cable [mm]	V2A Article number
DOMO-V 100	DN 100 (99 – 102)	0 (blind)	8 88 0 000 100 2 0
		18 – 19	
		20 – 24	
		25 – 29	
		30 – 34	
		35 – 39	
		40 – 44	
		45 – 49	
		50 – 54	
		55 – 59	
		60 – 65	
DOMO-VT 100	DN 100 (99 – 102)	0 (blind)	8 88 2 000 100 2 0
		32	
		40	
		50	
		63	
DOMO-V 150	DN 150 (149 – 152)	0 (blind)	8 88 0 000 150 2 0
		62 – 63	
		75 – 77	
		88 – 90	
		108 – 110	
DOMO-V 200	DN 200 (199 – 202)	0 (blind)	8 88 0 000 200 2 0
		108 – 110	
		123 – 125	
		133 – 135	
		158 – 160	

V4A upon request.

HKD KE pipe sleeve



NON-PRESSING WATER



PRESSING WATER

- Use in **unfinished structures** or **parts of structures to be made of waterproof concrete** (white tank)



- Certified under FHRK test regulation GE 102 (no. G 30 668) – FHRK 40 LD10
- Keyed surface for better connection between the pipe sleeve and concrete roughened surface
- Sealing system on both sides with movable EPDM lip seals
- The inner diameter matches the nominal diameter DN
- Radon-tight – according to FHRK information sheet MB101 meets the requirements for radon precautionary areas
- High dimensional stability
- Lightweight, impact-resistant plastic
- Gas-tight
- Can be used in twin/element walls
- Lengths: 200–500 mm
- Closed on both sides with PE caps



ACCESSORIES

- Formwork fastener (1701), see Curaflex® accessories

The HKD range is excluded from the DOYMA 25-year warranty.



HKD KE pipe sleeve

Nominal size [DN in mm]	Length [mm]	Article number
80	200	8 10 0 080 200 0 0
	240	8 10 0 080 240 0 0
	250	8 10 0 080 250 0 0
	300	8 10 0 080 300 0 0
	350	8 10 0 080 350 0 0
	365	8 10 0 080 365 0 0
	400	8 10 0 080 400 0 0
	500	8 10 0 080 500 0 0
100	200	8 10 0 100 200 0 0
	240	8 10 0 100 240 0 0
	250	8 10 0 100 250 0 0
	300	8 10 0 100 300 0 0
	350	8 10 0 100 350 0 0
	365	8 10 0 100 365 0 0
	400	8 10 0 100 400 0 0
	500	8 10 0 100 500 0 0
125	200	8 10 0 125 200 0 0
	240	8 10 0 125 240 0 0
	250	8 10 0 125 250 0 0
	300	8 10 0 125 300 0 0
	350	8 10 0 125 350 0 0
	365	8 10 0 125 365 0 0
	400	8 10 0 125 400 0 0
	500	8 10 0 125 500 0 0
150	200	8 10 0 150 200 0 0
	240	8 10 0 150 240 0 0
	250	8 10 0 150 250 0 0
	300	8 10 0 150 300 0 0
	350	8 10 0 150 350 0 0
	365	8 10 0 150 365 0 0
	400	8 10 0 150 400 0 0
	500	8 10 0 150 500 0 0
200	200	8 10 0 200 200 0 0
	240	8 10 0 200 240 0 0
	250	8 10 0 200 250 0 0
	300	8 10 0 200 300 0 0
	350	8 10 0 200 350 0 0
	365	8 10 0 200 365 0 0
	400	8 10 0 200 400 0 0
	500	8 10 0 200 500 0 0

Further types and sizes of pipe sleeves can be found in the Curaflex product range
(see notes on combination of the HKD and DOYMA product range).

HKD KE pipe sleeve with bonding flange

NON-PRESSING WATER

PRESSING WATER

- Use in **unfinished structures**
- For use with **sealants to be processed in liquid form** (black tank)
- With **bonding flange** in accordance with DIN 18533



- Certified under FHRK test regulation GE 102 (no. G 30 668) – FHRK 40 LD10
- Keyed surface for better connection between the pipe sleeve and concrete roughened surface
- Sealing system on both sides with movable EPDM lip seals
- Bonding flange for the on-site application of a thick coating (PMBC/KMB) with pressing water (W2.1-E)
- Bonding flange for the on-site application of a mineral sealing slurry (MDS) or a liquid plastic (FLK) with non-pressing water (W1-E or W3-E)
- Radon-tight – according to FHRK information sheet MB101 meets the requirements for radon precautionary areas
- The inner diameter matches the nominal diameter DN
- High dimensional stability
- Lightweight, impact-resistant plastic
- Gas-tight
- Can be used in twin/element walls
- Lengths: 200–500 mm
- Closed on both sides with PE caps



ACCESSORIES

- Formwork fastener (1701), see Curaflex® accessories

The HKD range is excluded from the DOYMA 25-year warranty.



HKD KE pipe sleeve with bonding flange

Nominal size [DN in mm]	Outer diameter of bonding flange max. [mm]	Length [mm]	Article number
80	192	200	8 10 0 080 200 0 9
		240	8 10 0 080 240 0 9
		250	8 10 0 080 250 0 9
		300	8 10 0 080 300 0 9
		350	8 10 0 080 350 0 9
		365	8 10 0 080 365 0 9
		400	8 10 0 080 400 0 9
		500	8 10 0 080 500 0 9
100	212	200	8 10 0 100 200 0 9
		240	8 10 0 100 240 0 9
		250	8 10 0 100 250 0 9
		300	8 10 0 100 300 0 9
		350	8 10 0 100 350 0 9
		365	8 10 0 100 365 0 9
		400	8 10 0 100 400 0 9
		500	8 10 0 100 500 0 9
125	234	200	8 10 0 125 200 0 9
		240	8 10 0 125 240 0 9
		250	8 10 0 125 250 0 9
		300	8 10 0 125 300 0 9
		350	8 10 0 125 350 0 9
		365	8 10 0 125 365 0 9
		400	8 10 0 125 400 0 9
		500	8 10 0 125 500 0 9
150	262	200	8 10 0 150 200 0 9
		240	8 10 0 150 240 0 9
		250	8 10 0 150 250 0 9
		300	8 10 0 150 300 0 9
		350	8 10 0 150 350 0 9
		365	8 10 0 150 365 0 9
		400	8 10 0 150 400 0 9
		500	8 10 0 150 500 0 9
200	312	200	8 10 0 200 200 0 9
		240	8 10 0 200 240 0 9
		250	8 10 0 200 250 0 9
		300	8 10 0 200 300 0 9
		350	8 10 0 200 350 0 9
		365	8 10 0 200 365 0 9
		400	8 10 0 200 400 0 9
		500	8 10 0 200 500 0 9

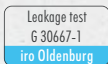
Further types and sizes of casings can be found in the Curaflex product range
(see notes on combination of the HKD and DOYMA product range).

HKD KG sewer wall element



PRESSING WATER

- Use in **unfinished walls to be made of waterproof concrete** (white tank)



- KG sewer pipe as double sleeve with seal element made of EPDM
- Water-tight against gas and pressing water upon installation in a white tank wall
- Radon-tight – according to FHRK information sheet MB101 meets the requirements for radon precautionary areas
- KG sewer pipes in accordance with DIN EN 13476-2
- Wall thicknesses 200–500 mm
- Including installation aids/cap

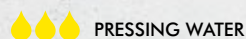
The HKD range is excluded from the DOYMA 25-year warranty.



HKD KG sewer wall element

Nominal size [DN in mm]	Length [mm]	Article number
100	200	8 20 0 100 200 0 0
	240	8 20 0 100 240 0 0
	250	8 20 0 100 250 0 0
	300	8 20 0 100 300 0 0
	350	8 20 0 100 350 0 0
	365	8 20 0 100 365 0 0
	400	8 20 0 100 400 0 0
	500	8 20 0 100 500 0 0
125	200	8 20 0 125 200 0 0
	240	8 20 0 125 240 0 0
	250	8 20 0 125 250 0 0
	300	8 20 0 125 300 0 0
	350	8 20 0 125 350 0 0
	365	8 20 0 125 365 0 0
	400	8 20 0 125 400 0 0
	500	8 20 0 125 500 0 0
150	200	8 20 0 150 200 0 0
	240	8 20 0 150 240 0 0
	250	8 20 0 150 250 0 0
	300	8 20 0 150 300 0 0
	350	8 20 0 150 350 0 0
	365	8 20 0 150 365 0 0
	400	8 20 0 150 400 0 0
	500	8 20 0 150 500 0 0
200	240	8 20 0 200 240 0 0
	250	8 20 0 200 250 0 0
	300	8 20 0 200 300 0 0
	350	8 20 0 200 350 0 0
	365	8 20 0 200 365 0 0
	400	8 20 0 200 400 0 0
	500	8 20 0 200 500 0 0

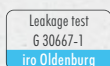
HKD KG sewer floor element



- Use in **unfinished floor slabs to be made of waterproof concrete** (white tank)



APP-PU 50



- KG sewer pipe as sleeve with seal element made of EPDM
- Water-tight against gas and pressing water upon installation in the floor slab
- Radon-tight – according to FHRK information sheet MB101 meets the requirements for radon precautionary areas
- KG sewer pipes in accordance with DIN EN 13476-2
- Length approx. 500 mm
- Optionally also available with foil flange for connecting moisture barriers in the form of tanking membranes

Nominal size [DN in mm]	Article number
100	8 20 1 100 500 0 0
125	8 20 1 125 500 0 0
150	8 20 1 150 500 0 0
200	8 20 1 200 500 0 0

With foil flange

Nominal size [DN in mm]	Article number
100	8 20 1 100 500 0 1
125	8 20 1 125 500 0 1
150	8 20 1 150 500 0 1
200	8 20 1 200 500 0 1

OPTIONAL ACCESSORIES

APP-PU 50	Article number
Accessories for foil flanges	8 99 0 050 000 0 0



ACCESSORIES

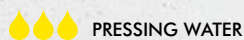
- One-component polyurethane sealant material APP-PU 50 with a very good adhesion to steel, plastics and concrete.

The HKD range is excluded from the DOYMA 25-year warranty.

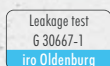
M-MT-1-904-01/2024

Subject to technical changes. Some illustrations include accessories.

HKD KG sewer bend



- Use in unfinished floor slabs to be made of waterproof concrete (white tank)



- KG sewer bend with seal element made of EPDM
- Seal element water-tight against pressing water
- Radon-tight – according to FHRK information sheet MB101 meets the requirements for radon precautionary areas
- Water-tight against gas and pressing water upon installation in a white tank floor, if no floor element can be installed due to space constraints.
- KG sewer pipes in accordance with DIN EN 1401
- Bend with 15°/30°/45°/68°

KG sewer bend 15°

Nominal size [DN in mm]	Article number
100	8 20 1 100 015 0 0
125	8 20 1 125 015 0 0
150	8 20 1 150 015 0 0
200	8 20 1 200 015 0 0

KG sewer bend 30°

Nominal size [DN in mm]	Article number
100	8 20 1 100 030 0 0
125	8 20 1 125 030 0 0
150	8 20 1 150 030 0 0
200	8 20 1 200 030 0 0

KG sewer bend 45°


Nominal size [DN in mm]	Article number
100	8 20 1 100 045 0 0
125	8 20 1 125 045 0 0
150	8 20 1 150 045 0 0
200	8 20 1 200 045 0 0

KG sewer bend 68°

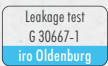
Nominal size [DN in mm]	Article number
100	8 20 1 100 068 0 0
125	8 20 1 125 068 0 0
150	8 20 1 150 068 0 0
200	8 20 1 200 068 0 0

The HKD range is excluded from the DOYMA 25-year warranty.

HKD KG sewer double sleeve

 PRESSING WATER

- Use in unfinished structures or parts of structures to be made of waterproof concrete (white tank)




- KG sewer double sleeve with seal element made of EPDM
- Seal element water-tight against gas and pressing water
- Radon-tight – according to FHRK information sheet MB101 meets the requirements for radon precautionary areas
- KG sewer pipes in accordance with DIN EN 1401
- For use in pump sumps or light wells
- Ideal for thin-walled components

Nominal size [DN in mm]	Length [mm]	Article number
100	125	8 20 2 100 000 0 2
125	138	8 20 2 125 000 0 2
150	172	8 20 2 150 000 0 2
200	212	8 20 2 200 000 0 2

The HKD range is excluded from the DOYMA 25-year warranty.

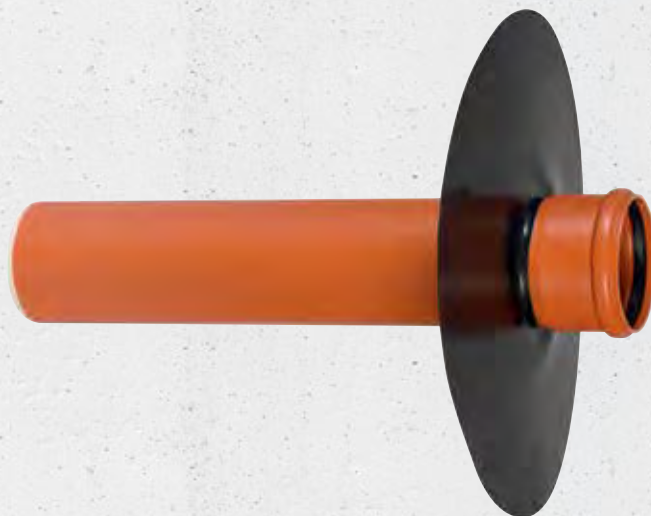
HKD KG sewer flange pipe

 NON-PRESSING WATER

- Renovation type for retrofitting in core bores of walls with tanking membranes or thick coatings (black tank)



APP-PU 50



- KG sewer flange pipe with foil flange for subsequent sealing of KG/HT pipes with tanking membranes or thick coatings
- KG sewer flange pipe is retrofitted into a suitable core bore or cut-out and the foil flange is glued to the wall
- radon proof – according to FHRK information sheet MB101
- With moulded plug-in sleeve on one side and with foil flange for connecting moisture barriers in the form of tanking membranes; diameter of foil flange 430–520 mm
- Length approx. 500 mm
- KG sewer pipes in accordance with DIN EN 13476-2

Nominal size [DN in mm]	Article number
100	8 20 0 100 500 0 1
125	8 20 0 125 500 0 1
150	8 20 0 150 500 0 1
200	8 20 0 200 500 0 1

OPTIONAL ACCESSORIES

APP-PU 50	Article number
Accessories for foil flanges	8 99 0 050 000 0 0

Further information can be found on the HKD APP-PU 50 product page.



ACCESSORIES

- One-component polyurethane sealant material APP-PU 50 with a very good adhesion to steel, plastics and concrete.

The HKD range is excluded from the DOYMA 25-year warranty.



HKD KG sewer plug-in flange

NON-PRESSING WATER

- Renovation type for retrofitting in existing KG sewer wall elements in walls with tanking membranes or thick coatings (black tank)



- KG sewer plug-in flange for subsequent sealing of already cast-in KG sewer wall elements for sealing with tanking membranes or thick coatings
- With moulded plug-in sleeve on one side and with foil flange for connecting moisture barriers in the form of tanking membranes; diameter of foil flange 430–520 mm.
- radon proof – according to FHRK information sheet MB101
- KG sewer pipes in accordance with DIN EN 13476-2

Nominal size [DN in mm]	Plug-in depth [mm]	Article number
100	65	8 20 0 100 000 0 3
125	75	8 20 0 125 000 0 3
150	85	8 20 0 150 000 0 3
200	95	8 20 0 200 000 0 3

OPTIONAL ACCESSORIES

APP-PU 50	Article number
Accessories for foil flanges	8 99 0 050 000 0 0

Further information can be found on the HKD APP-PU 50 product page.



ACCESSORIES

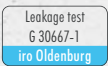
- One-component polyurethane sealant material APP-PU 50 with a very good adhesion to steel, plastics and concrete.

The HKD range is excluded from the DOYMA 25-year warranty.

HKD KG 2000 sewer wall element

PRESSING WATER

- Use in unfinished walls to be made of waterproof concrete (white tank)

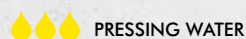


- KG 2000 sewer pipe as double sleeve with seal element made of EPDM
- Water-tight against gas and pressing water upon installation in a white tank wall
- Radon-tight – according to FHRK information sheet MB101 meets the requirements for radon precautionary areas
- KG 2000 sewer pipes in accordance with DIN EN 14758
- Polypropylene solid-walled pipe; more impact-resistant and more abrasion-resistant than KG
- For wall thicknesses of 200–500 mm
- Including installation aids/cap

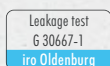
Nominal size [DN in mm]	Length [mm]	Article number
100	200	8 20 0 100 200 1 0
	240	8 20 0 100 240 1 0
	250	8 20 0 100 250 1 0
	300	8 20 0 100 300 1 0
	350	8 20 0 100 350 1 0
	365	8 20 0 100 365 1 0
	400	8 200 100 400 1 0
	500	8 20 0 100 500 1 0
125	200	8 20 0 125 200 1 0
	240	8 20 0 125 240 1 0
	250	8 20 0 125 250 1 0
	300	8 20 0 125 300 1 0
	350	8 20 0 125 350 1 0
	365	8 20 0 125 365 1 0
	400	8 20 0 125 400 1 0
	500	8 20 0 125 500 1 0
150	200	8 20 0 150 200 1 0
	240	8 20 0 150 240 1 0
	250	8 20 0 150 250 1 0
	300	8 20 0 150 300 1 0
	350	8 20 0 150 350 1 0
	365	8 20 0 150 365 1 0
	400	8 20 0 150 400 1 0
	500	8 20 0 150 500 1 0
200	240	8 20 0 200 240 1 0
	250	8 20 0 200 250 1 0
	300	8 20 0 200 300 1 0
	350	8 20 0 200 350 1 0
	365	8 20 0 200 365 1 0
	400	8 20 0 200 400 1 0
	500	8 20 0 200 500 1 0

The HKD range is excluded from the DOYMA 25-year warranty.

HKD KG 2000 sewer floor element



- Use in **unfinished floor slabs to be made of waterproof concrete** (white tank)



APP-PU 50



- KG 2000 sewer pipe as sleeve with seal element made of EPDM
- Water-tight against gas and pressing water upon installation in the floor slab
- Radon-tight – according to FHRK information sheet MB101 meets the requirements for radon precautionary areas
- KG 2000 sewer pipes in accordance with DIN EN 14758
- Polypropylene solid-walled pipe; more impact-resistant and more abrasion-resistant than KG
- Length approx. 500 mm
- Optionally also available with foil flange for connecting moisture barriers in the form of tanking membranes

Without foil flange

Nominal size [DN in mm]	Article number
100	8 20 1 100 500 1 0
125	8 20 1 125 500 1 0
150	8 20 1 150 500 1 0
200	8 20 1 200 500 1 0

With foil flange

Nominal size [DN in mm]	Article number
100	8 20 1 100 500 1 1
125	8 20 1 125 500 1 1
150	8 20 1 150 500 1 1
200	8 20 1 200 500 1 1

OPTIONAL ACCESSORIES

APP-PU 50	Article number
Accessories for foil flanges	8 99 0 050 000 0 0

Further information can be found on the HKD APP-PU 50 product page.



ACCESSORIES

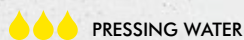
- One-component polyurethane sealant material APP-PU 50 with a very good adhesion to steel, plastics and concrete.

The HKD range is excluded from the DOYMA 25-year warranty.

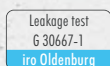
M-MT-1-904-01/2024

Subject to technical changes. Some illustrations include accessories.

HKD KG 2000 sewer bend



- Use in unfinished floor slabs to be made of waterproof concrete (white tank)



- KG 2000 sewer bend with seal element made of EPDM
- Seal element water-tight against gas and pressing water
- Radon-tight – according to FHRK information sheet MB101 meets the requirements for radon precautionary areas
- Polypropylene solid-walled pipe; more impact-resistant and more abrasion-resistant than KG
- KG 2000 sewer pipes in accordance with DIN EN 14758
- Water-tight upon installation in a white tank floor, if no floor element can be installed due to space constraints.
- Bend with 15°/30°/45°/68°

KG 2000 sewer bend 15°

Nominal size [DN in mm]	Article number
100	8 20 1 100 015 1 0
125	8 20 1 125 015 1 0
150	8 20 1 150 015 1 0
200	8 20 1 200 015 1 0

KG 2000 sewer bend 30°

Nominal size [DN in mm]	Article number
100	8 20 1 100 030 1 0
125	8 20 1 125 030 1 0
150	8 20 1 150 030 1 0
200	8 20 1 200 030 1 0

KG 2000 sewer bend 45°

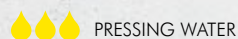
Nominal size [DN in mm]	Article number
100	8 20 1 100 045 1 0
125	8 20 1 125 045 1 0
150	8 20 1 150 045 1 0
200	8 20 1 200 045 1 0

KG 2000 sewer bend 68°

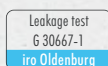
Nominal size [DN in mm]	Article number
100	8 20 1 100 068 1 0
125	8 20 1 125 068 1 0
150	8 20 1 150 068 1 0
200	8 20 1 200 068 1 0

The HKD range is excluded from the DOYMA 25-year warranty.

HKD KG 2000 sewer double sleeve



- Use in **unfinished structures** or **parts of structures to be made of waterproof concrete** (white tank)



- KG 2000 sewer double sleeve with seal element made of EPDM
- Seal element water-tight against gas and pressing water
- Radon-tight – according to FHRK information sheet MB101 meets the requirements for radon precautionary areas
- Polypropylene solid-walled pipe; more impact-resistant and more abrasion-resistant than KG
- KG 2000 sewer pipes in accordance with DIN EN 14758
- For use in pump sumps or light wells
- Ideal for thin-walled components

Nominal size [DN in mm]	Length [mm]	Article number
100	136	8 20 2 100 000 1 2
125	151.4	8 20 2 125 000 1 2
150	185	8 20 2 150 000 1 2
200	239	8 20 2 200 000 1 2

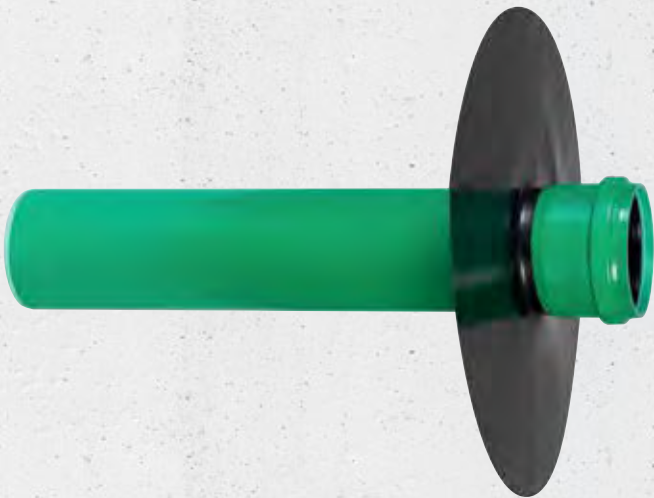
The HKD range is excluded from the DOYMA 25-year warranty.



HKD KG 2000 sewer flange pipe

NON-PRESSING WATER

- Renovation type for retrofitting in core bores of walls with tanking membranes or thick coatings (black tank)



- KG sewer flange pipe with foil flange for subsequent sealing of KG/HT pipes with tanking membranes or thick coatings
- KG sewer flange pipe is retrofitted into a suitable core bore or cut-out and the foil flange is glued to the wall
- radon proof – according to FHRK information sheet MB101
- With moulded plug-in sleeve on one side and with foil flange for connecting moisture barriers in the form of tanking membranes; diameter of foil flange 430–520 mm
- Length approx. 500 mm
- KG 2000 sewer pipes in accordance with DIN EN 14758

Nominal size [DN in mm]	Article number
100	8 20 0 100 500 1 1
125	8 20 0 125 500 1 1
150	8 20 0 150 500 1 1
200	8 20 0 200 500 1 1

OPTIONAL ACCESSORIES

APP-PU 50	Article number
Accessories for foil flanges	8 99 0 050 000 0 0

Further information can be found on the HKD APP-PU 50 product page.



ACCESSORIES

- One-component polyurethane sealant material APP-PU 50 with a very good adhesion to steel, plastics and concrete.

HKD KG 2000 sewer plug-in flange

NON-PRESSING WATER

- Renovation type for retrofitting in existing KG 2000 sewer wall elements in walls with tanking membranes or thick coatings (black tank)



APP-PU 50

- KG sewer plug-in flange for subsequent sealing of already cast-in KG sewer wall elements for sealing with tanking membranes or thick coatings
- With moulded plug-in sleeve on one side and with foil flange for connecting moisture barriers in the form of tanking membranes; diameter of foil flange 430–520 mm.
- radon proof – according to FHRK information sheet MB101
- KG 2000 sewer pipes in accordance with DIN EN 14758

Nominal size [DN in mm]	Plug-in depth [mm]	Article number
100	65	8 20 0 100 000 1 3
125	75	8 20 0 125 000 1 3
150	85	8 20 0 150 000 1 3
200	95	8 20 0 200 000 1 3

OPTIONAL ACCESSORIES

APP-PU 50	Article number
Accessories for foil flanges	8 99 0 050 000 0 0

Further information can be found on the HKD APP-PU 50 product page.




ACCESSORIES

- One-component polyurethane sealant material APP-PU 50 with a very good adhesion to steel, plastics and concrete.

The HKD range is excluded from the DOYMA 25-year warranty.



HKD slip-on flange

 NON-PRESSING WATER

- Renovation type for retrofitting onto existing cast-in KG sewer or KG 2000 sewer pipes in walls with tanking membranes or thick coatings (black tank)



- Slide-on sleeve with foil flange for installation on existing cast-in KG sewer or KG 2000 sewer pipes for subsequent sealing with tanking membranes or thick coatings
- Foil flange for connecting moisture barriers in the form of tanking membranes; diameter of foil flange 430–520 mm
- radon proof – according to FHRK information sheet MB101

Nominal size [DN in mm]	Length [mm]	Article number
100	48	8 20 0 100 000 1 4
125	52	8 20 0 125 000 1 4
150	60	8 20 0 150 000 1 4
200	68	8 20 0 200 000 1 4

OPTIONAL ACCESSORIES

APP-PU 50	Article number
Accessories for foil flanges	8 99 0 050 000 0 0

Further information can be found on the HKD APP-PU 50 product page.



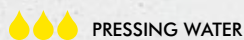
ACCESSORIES

- One-component polyurethane sealant material APP-PU 50 with a very good adhesion to steel, plastics and concrete.

The HKD range is excluded from the DOYMA 25-year warranty.



HKD connection funnel



- Use in **unfinished floor slabs to be made of waterproof concrete** (white tank)
- Moisture barrier connection via bonding flange in accordance with DIN 18533 W1-E



- Connection funnel made of ABS for embedding in the floor slab to create the optimal seal for KG sewer pipe with outer diameter 110 mm
- Allows for correction of a misalignment (after embedding in concrete) between the downpipe and building drain connection in any direction
- Replaces square cut-outs and therefore the additional subsequent work (concrete pouring)
- With integrated level for positional alignment of the connection funnel
- Integrated impact-protection insert made of PP to ensure trip-proof installation in accordance with DGUV 38 §12a
- Gas and watertight connection with the floor slab thanks to integrated 3-strip seal made of TPE
- radon proof – according to FHRK information sheet MB101
- Safe sealing for pre-installed KG sewer pipe through TPE sealing lips
- Connection funnel can be used for floor slab drainage during the building phase
- With protective film applied (including installation notes) to ensure function during the raw construction phase

Nominal size [DN in mm]	Outer diameter of bonding flange [mm]	PU	Article number
110	385	1 Item	8 00 1 000 001 0 0
		3 Items	8 00 1 000 003 0 0
		6 Items	8 00 1 000 006 0 0
		1 Item *	8 00 1 000 001 0 1

* Individually packed per item.




Protective film

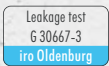
M-MT-1-904-01/2024

Subject to technical changes. Some illustrations include accessories.

HKD wall collar

 **PRESSING WATER**

- Use in **unfinished structures** or **parts of structures to be made of waterproof concrete** (white tank)



- Classic wall collar for sealing pipes in concrete walls or floor slabs made of waterproof concrete
- Water-tight against gas and pressing water
- Radon-tight – according to FHRK information sheet MB101 meets the requirements for radon precautionary areas
- EPDM material
- Profile width: approx. 50 mm
- Including V2A stainless steel straps for securing to the pipe
- Low installation height: 17 mm

Nominal size [DN in mm]	Article number
100	8 18 0 110 000 2 0
125	8 18 0 125 000 2 0
150	8 18 0 160 000 2 0
200	8 18 0 200 000 2 0

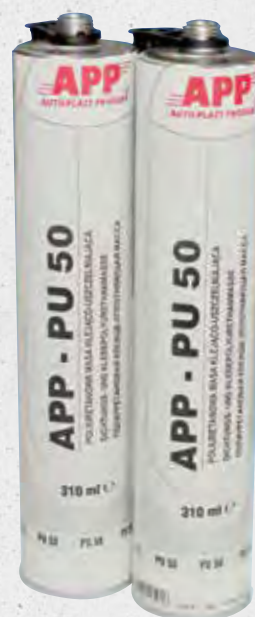
M-MT-1-904-01/2024

Subject to technical changes. Some illustrations include accessories.

The HKD range is excluded from the DOYMA 25-year warranty.

HKD APP-PU 50

Accessories for foil flanges



- One-component polyurethane sealant material with a very good adhesion to steel, plastics and concrete
- Container size: 310 ml
- Safety data: see separate safety data sheet
- Colour: white

Article number

8 99 0 050 000 0 0

RECOMMENDED NUMBER OF APP-PU 50 CARTRIDGES

DN	Flange surface [cm ²]	Required number of cartridges for one foil flange	Possible number of foil flanges with just one cartridge*
100	1388	1 cartridge	1,7
125	1648	1 cartridge	1,4
150	1731	1 cartridge	1,4
200	1854	1 cartridge	1,3

* One cartridge (310 ml) is sufficient for approx. 2350 cm².

M-MT-1-904-01/2024

Subject to technical changes. Some illustrations include accessories.

The HKD range is excluded from the DOYMA 25-year warranty.



www.doyma.com

Link-Seal C, S316

Link chains for steel/cast iron pipes

💧💧💧 PRESSING WATER

- Sealing of duct systems
- Installation in **pre-installed pipe sleeve** or **core bore in waterproof concrete** (white tank)
- Split version, for **pipes and cables that are already installed**



PRODUCT ADVANTAGES

- Quick installation thanks to pre-assembled system
- Robust rubber parts ensure a long service life
- The radial expansion of the rubber parts ensures a permanent, pressure-tight and secure sealing of the annular space
- Oil, fuel and solvent-resistant or high-temperature resistant versions and versions with KTW approval are available
- Easy installation; even retrofitting possible

TECHNICAL DETAILS

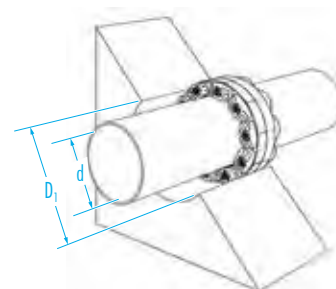
- Certified under FHRK test regulation GE 101 (no. G 30 322-6-2)
- Water-tight against pressing water
- radon proof – according to FHRK information sheet MB101
- For galvanised screws: general application in normal atmosphere, water or humidity. Suitable for electrical insulation and cathodic corrosion protection
- For stainless steel screws: high resistance to water, against most inorganic substances (acids and alkalis) and most organic substances (e.g. acetic acid and acetone)
- LS 200 to LS 275 FHRK standard 20, 30, 40
- LS 300 to LS 700 FHRK standard 20, 30, 40, 60

MATERIAL

- Pressure plates: glass fibre reinforced polyamide
- Rubber material: black EPDM rubber
- Version C: galvanised steel screws
- Version S316: A4-70 stainless steel screws



Individual module



The HKD range is excluded from the DOYMA 25-year warranty.

Link-Seal C (galvanised steel screws)

Module type/ quantity	Inner diameter [DN in mm]	Outer diameter d [mm]	Article number
LS200	—	—	6 50 0 200 000 0 0
LS265	—	—	6 50 0 265 000 0 0
LS275	—	—	6 50 0 275 000 0 0
LS300	—	—	6 50 0 300 000 0 0
LS310	—	—	6 50 0 310 000 0 0
LS315	—	—	6 50 0 315 000 0 0
LS325	—	—	6 50 0 325 000 0 0
LS340	—	—	6 50 0 340 000 0 0
LS360	—	—	6 50 0 360 000 0 0
LS400	—	—	6 50 0 400 000 0 0
LS410	—	—	6 50 0 410 000 0 0
LS425	—	—	6 50 0 425 000 0 0
LS440	—	—	6 50 0 440 000 0 0
LS475	—	—	6 50 0 475 000 0 0
LS500	—	—	6 50 0 500 000 0 0
LS525	—	—	6 50 0 525 000 0 0
LS575	—	—	6 50 0 575 000 0 0
LS615	—	—	6 50 0 615 000 0 0
LS650	—	—	6 50 0 650 000 0 0
6x315	100	48	6 50 0 048 100 0 0
6x300	100	58 + 60	6 50 0 060 100 0 0
5x360	125	42 + 48	6 50 0 048 125 0 0
7x340	125	60	6 50 0 060 125 0 0
8x315	125	76	6 50 0 076 125 0 0
5x410	150	58 + 60	6 50 0 060 150 0 0
9x340	150	89	6 50 0 089 150 0 0
10x315	150	98	6 50 0 098 150 0 0
7x310	150	110	6 50 0 110 150 0 0
10x265	150	114	6 50 0 114 150 0 0
7x475	200	110	6 50 0 110 200 0 0
7x410	200	114	6 50 0 114 200 0 0
13x340	200	135	6 50 0 135 200 0 0
7x400	250	168	6 50 0 168 250 0 0
7x500	300	160 + 168 + 170	6 50 0 160 300 0 0
12x410	300	210 + 219	6 50 0 219 300 0 0
15x360	300	222	6 50 0 222 300 0 0
18x360	350	273	6 50 0 273 350 0 0


Further material combinations available upon request.

Link-Seal S316 (A4-70 stainless steel screws)

Module type/ quantity	Inner diameter [DN in mm]	Outer diameter d [mm]	Article number
LS200	—	—	6 50 0 200 000 4 0
LS265	—	—	6 50 0 265 000 4 0
LS275	—	—	6 50 0 275 000 4 0
LS300	—	—	6 50 0 300 000 4 0
LS310	—	—	6 50 0 310 000 4 0
LS315	—	—	6 50 0 315 000 4 0
LS325	—	—	6 50 0 325 000 4 0
LS340	—	—	6 50 0 340 000 4 0
LS360	—	—	6 50 0 360 000 4 0
LS400	—	—	6 50 0 400 000 4 0
LS410	—	—	6 50 0 410 000 4 0
LS425	—	—	6 50 0 425 000 4 0
LS440	—	—	6 50 0 440 000 4 0
LS475	—	—	6 50 0 475 000 4 0
LS500	—	—	6 50 0 500 000 4 0
LS525	—	—	6 50 0 525 000 4 0
LS575	—	—	6 50 0 575 000 4 0
LS615	—	—	6 50 0 615 000 4 0
LS650	—	—	6 50 0 650 000 4 0
6x315	100	48	6 50 0 048 100 4 0
6x300	100	58 + 60	6 50 0 060 100 4 0
5x360	125	42 + 48	6 50 0 048 125 4 0
7x340	125	60	6 50 0 060 125 4 0
8x315	125	76	6 50 0 076 125 4 0
5x410	150	58 + 60	6 50 0 060 150 4 0
9x340	150	89	6 50 0 089 150 4 0
10x315	150	98	6 50 0 098 150 4 0
7x310	150	110	6 50 0 110 150 4 0
10x265	150	114	6 50 0 114 150 4 0
7x475	200	110	6 50 0 110 200 4 0
7x410	200	114	6 50 0 114 200 4 0
13x340	200	135	6 50 0 135 200 4 0
7x400	250	168	6 50 0 168 250 4 0
7x500	300	160 + 168 + 170	6 50 0 160 300 4 0
12x410	300	210 + 219	6 50 0 219 300 4 0
15x360	300	222	6 50 0 222 300 4 0
18x360	350	273	6 50 0 273 350 4 0

Link-Seal BC, BS316

Link chains for plastic pipes

 PRESSING WATER

- Sealing of duct systems
- Installation in **pre-installed pipe sleeve** or **core bore in waterproof concrete** (white tank)
- Split version, for **pipes and cables that are already installed**



PRODUCT ADVANTAGES

- Especially suitable for plastic pipes
- Quick installation thanks to pre-assembled system
- Robust rubber parts ensure a long service life
- The radial expansion of the rubber parts ensures a permanent, pressure-tight and secure sealing of the annular space
- Easy installation; even retrofitting possible

TECHNICAL DETAILS

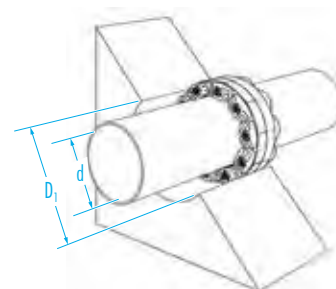
- Water-tight against pressing water
- radon proof – according to FHRK information sheet MB101
- For galvanised screws: general application in normal atmosphere, water or humidity. Suitable for electrical insulation and cathodic corrosion protection
- F or stainless steel screws: high resistance to water, against most inorganic substances (acids and alkalis) and most organic substances (e.g. acetic acid and acetone)
- LS 200 to LS 275 FHRK standard 20, 30, 40
- LS 300 to LS 700 FHRK standard 20, 30, 40, 60

MATERIAL

- Pressure plates: glass fibre reinforced polyamide
- Rubber material: softer EPDM rubber in blue (EPDM 40° ± 5° Shore A)
- Version BC: galvanised steel screws
- Version BS316: A4-70 stainless steel screws



Individual module



The HKD range is excluded from the DOYMA 25-year warranty.

Link-Seal BC (galvanised steel screws)

Module type/ quantity	Inner diameter [DN in mm]	Outer diameter d [mm]	Article number
LS200	—	—	6 50 0 200 000 0 4
LS265	—	—	6 50 0 265 000 0 4
LS275	—	—	6 50 0 275 000 0 4
LS300	—	—	6 50 0 300 000 0 4
LS310	—	—	6 50 0 310 000 0 4
LS315	—	—	6 50 0 315 000 0 4
LS325	—	—	6 50 0 325 000 0 4
LS340	—	—	6 50 0 340 000 0 4
LS360	—	—	6 50 0 360 000 0 4
LS400	—	—	6 50 0 400 000 0 4
LS410	—	—	6 50 0 410 000 0 4
LS425	—	—	6 50 0 425 000 0 4
LS440	—	—	6 50 0 440 000 0 4
LS475	—	—	6 50 0 475 000 0 4
LS500	—	—	6 50 0 500 000 0 4
LS525	—	—	6 50 0 525 000 0 4
LS575	—	—	6 50 0 575 000 0 4
LS625	—	—	6 50 0 625 000 0 4
LS650	—	—	6 50 0 650 000 0 4
LS700	—	—	6 50 0 700 000 0 4
7x275	80	40	6 50 0 040 080 0 4
5x340	100	32 + 40	6 50 0 040 100 0 4
6x315	100	50	6 50 0 050 100 0 4
7x340	125	63	6 50 0 063 125 0 4
8x315	125	75	6 50 0 075 125 0 4
5x410	150	63	6 50 0 063 150 0 4
9x340	150	90	6 50 0 090 150 0 4
7x310	150	110	6 50 0 110 150 0 4
7x475	200	110	6 50 0 110 200 0 4
9x360	200	125	6 50 0 125 200 0 4
13x340	200	140	6 50 0 140 200 0 4

Further material combinations available upon request.

Link-Seal BS316 (A4-70 stainless steel screws)

Module type/ quantity	Inner diameter [DN in mm]	Outer diameter d [mm]	Article number
LS200	—	—	6 50 0 200 000 4 4
LS265	—	—	6 50 0 265 000 4 4
LS275	—	—	6 50 0 275 000 4 4
LS300	—	—	6 50 0 300 000 4 4
LS310	—	—	6 50 0 310 000 4 4
LS315	—	—	6 50 0 315 000 4 4
LS325	—	—	6 50 0 325 000 4 4
LS340	—	—	6 50 0 340 000 4 4
LS360	—	—	6 50 0 360 000 4 4
LS400	—	—	6 50 0 400 000 4 4
LS410	—	—	6 50 0 410 000 4 4
LS425	—	—	6 50 0 425 000 4 4
LS440*	—	—	6 50 0 440 000 4 4
LS475	—	—	6 50 0 475 000 4 4
LS500	—	—	6 50 0 500 000 4 4
LS525	—	—	6 50 0 525 000 4 4
LS575	—	—	6 50 0 575 000 4 4
LS625	—	—	6 50 0 625 000 4 4
LS650	—	—	6 50 0 650 000 4 4
LS700	—	—	6 50 0 700 000 4 4
7x275	80	40	6 50 0 040 080 4 4
5x340	100	32 + 40	6 50 0 040 100 4 4
6x315	100	50	6 50 0 050 100 4 4
7x340	125	63	6 50 0 063 125 4 4
8x315	125	75	6 50 0 075 125 4 4
5x410	150	63	6 50 0 063 150 4 4
9x340	150	90	6 50 0 090 150 4 4
7x310	150	110	6 50 0 110 150 4 4
7x475	200	110	6 50 0 110 200 4 4
9x360	200	125	6 50 0 125 200 4 4
13x340	200	140	6 50 0 140 200 4 4

Installation example for link chains:

Link-Seal version C

The version C link chain is suitable for sealing steel pipes which are routed through walls, ceilings and slabs. An advantage of this seal is the option to retrofit.

PLEASE NOTE

- The wall in the installation area must be clean, level and dry.
- There must be no cracks or breakouts on the wall surface in the installation area.
- Masonry walls must always be implemented with pipe sleeves.
- The seals and the pipe surfaces must be clean and free from damage.
- Ensure that the pipe to be sealed is centred in the core bore or pipe sleeve, and that no radial forces are being exerted on the sealing modules.
- The pressure plates must be evenly distributed.
- The number of sealing modules to be installed according to the calculation program must be strictly adhered to.



Link-Seal C link chain

NOTES

The products are under constant development and technical changes may be implemented without notice. Detailed installation instructions are included with the product. They are also available on the internet at www.doyma.com.

MINIMUM WALL THICKNESS

Module type	Wall thickness [mm]	Module type	Wall thickness [mm]
LS 200	75	LS 400	140
LS 265		LS 410	
LS 275		LS 425	
LS 300	100	LS 440	
LS 310		LS 475	
LS 315		LS 500	150
LS 325	120	LS 525	
LS 340		LS 575	
LS 360		LS 625	
		LS 700	

MAXIMUM TORQUE WHEN SEALING STEEL/CAST IRON PIPES

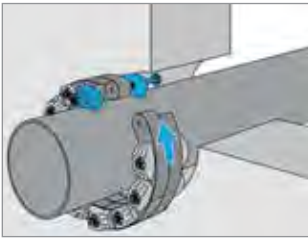
Module type	Version C, S316 [Nm]
LS 200 – LS 275	2
LS 300 – LS 360	8
LS 400 – LS 475	27
LS 500 – LS 575	65
LS 615	110

M-MT-1-904-01/2024

Subject to technical changes. Some illustrations include accessories.

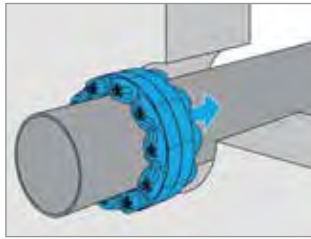
INSTALLATION STEPS

1



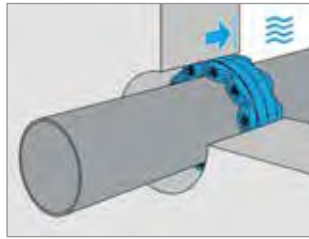
Lay the link chain with the appropriate number of modules around the pipe, and close it using a screw connection.

2



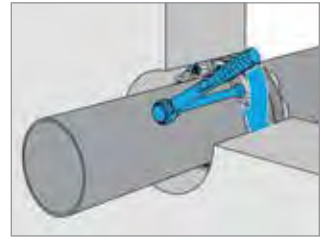
Push the link chain into the annular space.

3



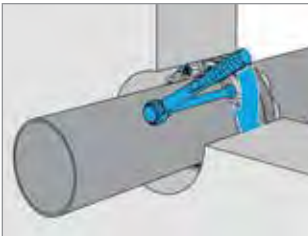
Place the link chain on the water side.

4



In multiple increments and working in a clockwise direction, tighten the link chain with a torque spanner.

5



After approx. two hours, repeat step 4.

Approvals, test reports, expert opinions

FHRK TESTS

Sequ. no.	Testing institute	Test content	Test result classification	Product
1	iro GmbH Oldenburg 21/01/2019, HKD DOMO-DW-T Document number: G 30 322-2-6	Test GE 101 gas/water-tightness	Test pressure 1.0 bar	HKD DOMO-DW, HKD DOMO-DW-T, HKD DOMO-DW-B, HKD DOMO-DW-FL, HKD DOMO-DW-FL-K, HKD DOMO-DW-M, HKD DOMO-DW-NK, HKD DOMO-DW-Z, HKD DOMO-DW-Z-K, HKD DOMO-V, HKD DOMO-VT
2	iro GmbH Oldenburg 21/01/2019, Link-Seal type C Document number: G 30 322-6-2	Test GE 101 Gas-tightness	Test pressure 0.1 bar	HKD DOMO-NW, HKD DOMO-NW-T, HKD DOMO-NW-B, HKD DOMO-NW-FL, HKD DOMO-NW-FL-K, HKD DOMO-NW-M, HKD DOMO-NW-NK, HKD DOMO-NW-Z, HKD DOMO-NW-Z-K
3	iro GmbH Oldenburg 21/01/2019, HKD DOMO-DW-T Document number: G 30 322-2-6	Test GE 101 gas/water-tightness	Test pressure 1.0 bar	Link-Seal C, Link-Seal S316
4	iro GmbH Oldenburg 07.06.2021 / HKD KE pipe sleeve Document number: G 30 668	Test GE 101 Shock and impact load Compressive load gas/water-tightness	Test pressure 1.0 bar	HKD KE pipe sleeve, HKD KE pipe sleeve with bonding flange

PRESSURE AND LEAKAGE TESTS

Sequ. no.	Testing institute	Test content	Test result classification	Product
1	iro GmbH Oldenburg 25/01/2018, HKD KG system Document number: G 30667-1	Water-tightness	Test pressure 4.0 bar	HKD KG sewer wall element, HKD KG sewer floor element, HKD KG sewer bend, HKD KG sewer double sleeve, HKD KG 2000 sewer wall element, HKD KG 2000 sewer floor element, HKD KG 2000 sewer bend, HKD KG 2000 sewer double sleeve
2	iro GmbH Oldenburg 25/01/2018, HKD DOMO-DW Document number: G 30667-2 / G 30667-4	Water-tightness	Test pressure 2.5 bar	HKD DOMO-DW
3	iro GmbH Oldenburg 25/01/2018, HKD wall collar Document number: G 30667-3	Water-tightness	Test pressure 4.0 bar	HKD wall collar

RADON TESTS

Sequ. no.	Testing institute	Test content	Test result classification	Product
1	IAF 02/01/2018, HKD DOMO-NW-T	Materials testing for radon diffusion coefficient	$R > 3$, radon-tight	HKD DOMO-NW, HKD DOMO-NW-T, HKD DOMO-NW-B, HKD DOMO-NW-FL, HKD DOMO-NW-FL-K, HKD DOMO-NW-M, HKD DOMO-NW-Z, HKD DOMO- NW-Z-K, HKD DOMO-DW, HKD DOMO-DW-T, HKD DOMO-DW-B, HKD DOMO- DW-FL, HKD DOMO-DW-FL-K, HKD DOMO-DW-M, HKD DOMO-DW-Z, HKD DOMO-DW-Z-K, HKD DOMO-V, HKD DOMO-VT
2	IAF 26/01/2018, HKD wall collar	Materials testing for radon diffusion coefficient	$R > 3$, radon-tight	HKD wall collar, HKD KG sewer wall element, HKD KG sewer floor element, HKD KG sewer bend, HKD KG sewer double sleeve, HKD KG 2000 sewer wall element, HKD KG 2000 sewer floor element, HKD KG 2000 sewer bend, HKD KG 2000 sewer double sleeve, HKD floor drain, HKD KE pipe sleeve
3	IAF 06.03.2020 / HKD KE pipe sleeve	Materials testing for radon diffusion coefficient	$R > 3$, radon-tight	HKD KE pipe sleeve, HKD KE pipe sleeve with bonding flange

Glossary

PRESSING WATER	Water exerting hydrostatic pressure on the seal. <ul style="list-style-type: none">• Corresponds to load class 1 as per the Waterproofing guideline• Corresponds to water exposure class W2-E 'Pressing water' as per DIN 18533
GAS-TIGHT	Describes the following property of a gasket insert: tight against all gases which do not attack the material (e.g. air, nitrogen, noble gases, etc.)
KMB/PMBC	Plastic modified bitumen coating
NOMINAL WIDTH	(DN) A measured size that for DOYMA products corresponds to the actual inner diameter.
NON-PRESSING WATER	Does not exert any pressure on the seal, or only temporarily exerts slight hydrostatic pressure. <ul style="list-style-type: none">• Corresponds to load class 2 as per the Waterproofing guideline• Corresponds to water exposure class W1-E 'Soil moisture and non-pressing water' as per DIN 18533
BLACK TANK	Structures that are not watertight must be protected against penetrating water through a seal. This seal comes in the form of a membrane created using a filler compound or a liquid, thus creating a skin-like seal. Since the material bitumen plays an important role here, these seals are also referred to as 'black tank'.
WHITE TANK	Watertight or water-impermeable structures do not require additional 'skin' sealing. Above all, this includes structures made of waterproof reinforced concrete (WP concrete). These building seals are also referred to as 'white tank'.
WP CONCRETE	Waterproof or water-impermeable concrete
PACKINGS	According to DIN 18533, single-layered, loosely laid tanking membranes must be enclosed with permanently compatible packings arranged on both sides. The packings may be the same material as the tanking membrane or be made of material-compatible elastomers.

Terms and conditions for returns

PREREQUISITE

1. Goods to be returned within max. six months of the date of purchase.
2. Returns must be sent to DOYMA as 'CARRIAGE PAID'.
3. Goods must be in perfect condition.

TERMS AND CONDITIONS

1. Returns **must be reported in writing** and confirmed in writing by DOYMA – returns that are not reported first will either be returned to the sender (carriage to be paid by you) or will be subject to an administrative fee of EUR 25 (in addition to the incurred costs of the return itself).
2. Advance freight charges – including pro rata – will be calculated.
3. You must state your VAT number.

CHARGES FOR PROCESSING RETURNS

A processing fee of min. €75.00 will be charged to cover the cost of goods handling, quality control, reworking and restoration of saleability in current form, packaging, etc. The listed costs apply to standard designs as per the applicable price list for the products in question.

PROCESSING FEES FOR THE PRODUCT RANGES

Product ranges	Product/type	Dimensions	Costs
Curaflex®	A, C, 3000, Nova Uno	Up to DN 350	25%
		Up to DN 500	35%
Quadro-Secura®*	—		25%
Curaflex®*	—		35%
DOYMAfix®**	—		30%
UGA/HKD/link chains*	—		50%

* Goods manufactured to order are excluded ** excl. expansion foam

NO RETURNS ACCEPTED

- For any product where a delivery note/order confirmation or invoice number has not been specified
- For custom solutions
- For products with a shelf life, such as varnish, filler, lubricants, expansion foam
- For cable conduits, gas house lead-ins, MIS, ADS, Quick-Types and the like
- For any types or dimensions not mentioned

Please send your written query to Export@doyma.de.

Subject to changes. Valid from 01/01/2024

General Terms and Conditions

§ 1 General/scope of validity

- (1) Our terms and conditions of sale apply exclusively. They apply to all our offers, sales, deliveries and services. Insofar as the purchaser was not able to take note of them at the time the contract was concluded, they shall nevertheless apply if the purchaser was aware of or must have been aware of them from previous business transactions.
- (2) We do not recognise any terms and conditions of business of the purchaser that contradict or deviate from our terms and conditions of sale. If we carry out the delivery or service required by us in knowledge of the purchaser's terms and conditions of business, we also do not acknowledge such terms and conditions of the purchaser which are not contradicted by our terms and conditions of sale.
- (3) Our terms and conditions of sale shall only apply to commercial entities within the meaning of § 310 of the German Civil Code (BGB), i.e. not if the customer's order cannot be attributed to its commercial or self-employed professional activity (consumer in accordance with § 13 BGB).
- (4) Verbal agreements have not been made. All future amendments to this contract must be made in writing or in text form in accordance with § 126b BGB (in particular by fax or email); this also applies to any agreement to waive the requirement for written arrangements. Our sales representatives are not authorised to waive this requirement verbally. Changes will therefore only become effective when they have been formally confirmed by the Management Board or Sales Management.

§ 2 Offer – conclusion of contract

- (1) Our offers are subject to change without notice, unless otherwise specified.
- (2) If the purchaser's order is an offer to conclude a contract, we may accept this offer within 10 days.
- (3) We reserve all property rights and copyrights to illustrations, drawings, calculations and other documents. This applies in particular to such written documents which are designated as 'confidential'. Before passing them on to third parties, the purchaser must obtain our express consent in writing or text form in accordance with § 126b BGB (in particular by fax or email).

§ 3 Prices – terms of payment

- (1) Unless otherwise agreed, all prices are quoted ex-warehouse or ex-works including the packaging. From a gross goods value of EUR 1250.00, our prices include free delivery within Germany. Freight, insurance, postage and all other agreed special or ancillary services will be charged additionally at reasonable prices. This shall also apply if the purchaser orders special packaging or shipment.
- (2) Our employees are only entitled to collect payment if this has been confirmed in writing to the purchaser by our Management beforehand.
- (3) Payment by the purchaser is due immediately. The purchaser shall be notified that it is in default of payment at the latest within 30 days upon receipt of the invoice. If the purchaser is late with payment, it is obliged to reimburse a fixed administrative fee of EUR 150 for each (further) reminder.
- (4) The purchaser can only offset this if its counterclaims are legally established, undisputed or acknowledged by us.
- (5) We are entitled to exercise a right of retention on account of all claims arising from the business relationship with the purchaser.

§ 4 Delivery – delivery time

- (1) The commencement of the delivery period stated by us presupposes that all technical questions have been clarified and that the purchaser has fulfilled its obligations in a timely and proper manner. The defence of non-performance of the contract remains reserved.
- (2) In the event of force majeure or disruption of operations occurring at our premises or our suppliers' premises, e.g. due to riots, strikes or lockouts, which temporarily prevent us from delivering the object of purchase on the agreed date or within the agreed deadlines at no fault of our own, the delivery times or delivery periods specified by us will be postponed for the duration of the disruption in performance caused by these circumstances. If a corresponding disturbance leads to a delay in performance of more than two months, the purchaser shall be entitled to withdraw from the contract.
- (3) If the object of the contract is not a concrete object, we are obliged to deliver an object of average quality and type from the stipulated category. This obligation to procure such an item is limited to the stock in our warehouse or goods from our production plant. If we do not produce the stipulated goods or if we have not yet received them, we reserve the right to have our supplier take care of delivery. This shall apply mutatis mutandis in the event of a special purchase of goods which we have not yet received as property. We shall not be liable for any non-delivery by our supplier for which we are not responsible. This shall also apply in the event of a delay in delivery by our supplier for which we are not responsible.
- (4) The manufacturer reserves the right to make design or shape changes, deviations in colour and changes to the scope of delivery during the delivery period, provided that the object of purchase is not significantly changed and the change is reasonable for the purchaser.
- (5) We reserve the right to charge a surcharge for very small quantities.

§ 5 Delay in delivery

- (1) We are liable for delays in accordance with legal provisions, providing the underlying purchase contract is a fixed transaction within the meaning of §§ 361 BGB and 376 of the German Commercial Code (HGB);
 - the purchaser is no longer interested in the further performance of the contract following a delay in delivery for which we are at fault;
 - the delay in delivery is the result of a wilful or grossly negligent breach of contract on our part, or on the part of our representatives or vicarious agents.
- (2) We are liable in accordance with legal provisions, but said liability is limited to foreseeable, typical damages if
 - the delay in delivery is the result of a wilful or grossly negligent breach of contract on our part;
 - the delay in delivery is the result of a slightly negligent breach on our part of an essential contractual obligation.
- (3) If our delay in delivery is only the result of a breach of a non-essential contractual obligation, for which we are at fault, the purchaser's claim is limited to 20% of the delivery value.

§ 6 Endangerment of the performance/insolvency

- (1) If it becomes apparent to us after conclusion of the contract that the (further) fulfilment of the contract is endangered due to a lack of performance by the purchaser, we shall be entitled to refuse the provision of advance performance under this contract until the corresponding consideration has been effected by the purchaser or security has been provided for it.
- (2) We shall be entitled to withdraw from the contract or to terminate it without notice if, despite a reasonable grace period for the provision of the corresponding counter-performance, the purchaser fails to provide the security on a performance upon counter-performance basis.
- (3) If the purchaser is insolvent or over-indebted, the opening of insolvency or composition proceedings is applied for or opened against its assets, we are entitled to withdraw from the contract or to terminate it without setting a grace period.
- (4) If we terminate or withdraw from the contract in accordance with paragraphs 2 or 3, we shall be entitled to claim damages from the purchaser instead of performance or reimbursement of expenses.

§ 7 Acceptance

- (1) The purchaser is obliged to carry out the actions necessary for our fulfilment of the contract, in particular to accept the goods. If it violates this obligation and cannot prove that it is not at fault, it shall be obliged to reimburse us for the damage incurred in this respect, in particular additional expenses. We reserve the right to make further claims.
- (2) If the purchaser defaults on acceptance of the object of purchase for more than 14 days from receipt of the notification of readiness for delivery or proper first delivery by us, we may grant the purchaser a grace period of 14 days with the declaration that we will reject acceptance of the object of purchase after expiry of this period.

After this grace period has elapsed, we shall be entitled to withdraw from the purchase contract by means of a written declaration or to demand performance for non-performance. The setting of a grace period is not necessary if the purchaser seriously and definitively refuses acceptance or is obviously unable to pay the purchase price even if a grace period is granted. In this case, we are entitled to demand lump-sum compensation of 10% of the agreed purchase price for lost profit. However, the purchaser reserves the right to prove that we have suffered no damages or less than that lump-sum amount. We also reserve the right to assert and produce evidence of higher damages.

§ 8 Shipment – transfer of risk

- (1) Unless otherwise specified in the order confirmation, delivery 'ex-warehouse' or 'ex-works', i.e. EXW Oytan (Incoterms 2020), shall be agreed upon.
- (2) We will not take back any packaging other than pallets and lattice boxes. The purchaser has the opportunity to have our packaging material disposed of in accordance with our agreement through Interseroh.
- (3) Exchange pallets and lattice boxes which are not exchanged will be invoiced. Exchange pallets will be charged at net EUR 16.00 and box pallets at EUR 132.50 each.
- (4) We will only take out transport insurance if this is contractually agreed. The corresponding costs shall be borne by the purchaser.
- (5) We shall be entitled to make partial deliveries to a reasonable extent.

§ 9 General rules regarding defects of the purchased items

- (1) All claims of the purchaser arising from defects depend on the fulfilment of the purchaser's obligations to inspect and report defects in accordance with § 377 HGB.
- (2) Advertising statements of third parties are only binding for us if they have been approved by the manufacturer or us.
- (3) If the purchaser fails to fully comply with our or the manufacturer's operating or maintenance instructions, or the purchaser makes changes to the products, replaces parts or uses consumables that do not correspond to the original specifications, the warranty shall be void if the purchaser does not refute a substantiated claim that at least one of these circumstances has caused the defect.
- (4) Moreover, our warranty terms and conditions shall apply.

§ 10 Subsequent performance

- (1) If the item is defective, the purchaser shall initially only have the right to demand subsequent performance from us, provided that the subsequent performance is not unreasonable for us or we have seriously and finally refused it.
- (2) Subsequent performance may consist of a new delivery of the item or rectification (repair) by us or a third party engaged by us. In each case, we shall be obliged to bear all expenses necessary for the purpose of remedying the defect, in particular transport, travel, labour and material costs, insofar as these have not been increased by the fact that the object of purchase has been brought to a place other than the place of performance. In case of a new delivery, the purchaser must bear the costs for a dismantling and installation of the purchased item if the purchaser is a commercial entity.
- (3) We shall be entitled to choose between the various types of subsequent performance at our reasonable discretion (§ 315 BGB). In any case, we shall be entitled to refuse a type of subsequent performance selected by the purchaser if the type of subsequent performance results in 15% lower costs for us. The remaining residual value of the item returned in the case of a new delivery shall be credited against this.

- (4) We shall be entitled to provide the subsequent performance dependent on an appropriate share of the purchase price having been paid. We shall also be entitled to refuse subsequent performance if the costs thereof exceed the stipulated purchase price. If we are at fault for the defect, or if we have officially guaranteed the absence of the defect, we can only refuse subsequent performance if its costs exceed the stipulated purchase price by one third. The remaining residual value of the item returned in the case of a new delivery shall be credited against this.
- (5) Any subsequent performance by us shall be conducted without recognition of a legal obligation, unless we have expressly acknowledged the defect. Our technicians or fitters are not authorised to acknowledge a defect.
- (6) If a concrete object is the subject matter of this contract, we are entitled to repair it, if a repair by us or a third party engaged by us is possible. We shall also be entitled to subsequently deliver an item other than the stipulated item if it is just as suitable for the purchaser's contractual purposes as the stipulated item. If used goods are the subject matter of this contract, the purchaser (if it is a commercial entity) shall be obliged to inspect them immediately for visible defects. If the purchaser does not report such defects within three weeks of handover, the purchaser shall not be entitled to assert any rights based on identifiable defects, if the purchaser does not prove that the defect already existed at the time of handover.

§ 11 Additional rights in case of defects

- (1) If the subsequent performance pursuant to § 440 BGB has failed, the purchaser may assert the rights from § 437 No. 2 BGB (rescission or reduction) or § 437 No. 3 BGB (compensation for damages or reimbursement of expenses) at its discretion and in compliance with the provisions of §§ 10, 11, 12 and 13 of these General Terms and Conditions of Sale.
- (2) The purchaser is not entitled to claim damages in accordance with § 280 Para. 1 BGB in the case of insignificant defects of the goods. The right to a reduction of the purchase price is also excluded in the case of minor defects.

§ 12 Statute of limitation for claims arising from defects

- (1) The purchaser's claims arising from defects of the item shall lapse after five years upon delivery of the item. This shall also apply to the purchaser's rights to compensation for damages or damages in lieu of performance, including those for all damages to other legal assets of the purchaser which have arisen through the defect, unless this concerns damage to the purchaser's life, body or health, or unless we are responsible for the defect due to wilful intent or gross negligence.
- (2) If the subject matter of this contract also includes rights, the limitation period for the purchaser's claims arising from defects shall commence with the agreement of the contracting parties on the transfer of these rights to the purchaser.

§ 13 Cancellation and compensation for damages instead of performance due to a breach of duty

- (1) A period of time set by the purchaser for subsequent performance must be at least 14 days, unless the subsequent performance must be provided within a shorter period of time for special reasons.
- (2) Even after the unsuccessful expiry of a reasonable grace period, the purchaser shall only have the right to withdraw from the contract or to demand compensation for damages instead of performance if it has announced this beforehand when setting the grace period or any other reasonable period of time.
- (3) If the purchaser sets multiple deadlines for subsequent performance, the purchaser shall not be entitled to withdraw from the contract or demand compensation for damages in lieu of performance during the respective time period.

§ 14 Returns

- (1) Returns and/or exchange of defect-free goods is only possible if we have expressly agreed to this. There is no legal obligation to take back the goods. Return deliveries and return shipments intended for exchange must be delivered to our registered office as quickly as possible at the expense of the purchaser, including any advance freight charges paid by us, and the delivery note or invoice number must be specified. The purchaser shall bear the risk for this until the goods are accepted. We are entitled to charge administrative fees or to refuse the return. The minimum processing fee for returns is EUR 75.00 net. If special expenses are necessary in order to identify the returned goods or restore them to perfect condition (repairs, cleaning, etc.), we are entitled to charge any arising costs to the purchaser.
- (2) The purchaser is obliged to give us advance notice of any returns. If the purchaser violates this obligation, it shall be liable for any damage resulting from this. We reserve the right to return unreported return deliveries unprocessed and at the purchaser's expense, or even refuse acceptance of such deliveries. Returns must be reported in writing or in text form in accordance with § 126b BGB (in particular by fax or email) and confirmed in writing by DOYMA – returns that are not reported first will either be returned to the sender (carriage to be paid by you) or will be subject to an administrative fee of EUR 25 (in addition to the incurred costs of the return itself).

§ 15 Liability

- (1) We shall not be liable for slightly negligent breaches of duty, insofar as these do not concern essential contractual obligations, or if we have assumed a guarantee for the fulfilment of this obligation or for the success which did not occur due to the breach of duty. This also applies to corresponding actions of our subsidiaries and vicarious agents.
- (2) This exclusion of liability shall not apply if the damage consists of injury to life, limb or health or if claims arising from the German Product Liability Act or claims arising from data protection regulations (in particular the EU General Data Protection Regulation, the German Federal Data Protection Act) are affected.
- (3) We have business liability and product liability insurance. Insofar as this occurs, the exclusion of liability in accordance with Section 1 of this paragraph does not apply with the provision that the claim for damages is not limited to a maximum total of EUR 1,500,000 in each individual case.
- (4) Any claims for damages on the part of the purchaser arising from a grossly negligent breach of duty or from a grossly negligent act on our part shall be limited to the damage foreseeable for us.
- (5) The Sections 1 to 4 of this paragraph shall apply mutatis mutandis to offences committed by our employees and vicarious agents.

§ 16 Retention of title

- (1) We reserve title to the purchased item until all payments arising from the delivery contract have been received. In the event of a breach of contract on the part of the purchaser, in particular in the event of a delay in payment, we shall be entitled to seize the object of purchase after the unsuccessful expiry of a grace period (if this is not dispensable under the applicable law). The readmission of possession regarding the object of sale by us shall constitute a withdrawal from the contract. After taking back the object of sale, we shall be entitled to sell the object of sale at our discretion. The proceeds from the sale shall be offset against the purchaser's liabilities – less the reasonable sales costs.
- (2) The purchaser shall be obliged to treat the object of sale with care. In particular, it shall be obliged to insure the object of sale at its own expense against fire, water damage and theft to a sufficient extent of the replacement value. Insofar as maintenance and inspection work is required, the purchaser must carry this out in good time and at its own expense.
- (3) In the event of seizures or interventions by third parties, the purchaser must inform us immediately in writing or text form so that we can take legal action in accordance with § 771 of the German Civil Code (ZPO). Insofar as the third party is not in a position to reimburse us for the judicial and extra-judicial costs of a lawsuit in accordance with § 771 ZPO, the purchaser shall be liable for the loss incurred by us.
- (4) The purchaser shall be entitled to resell the object of sale in the ordinary course of business; however, it shall immediately assign all claims to us in the amount of the final invoice amount (including VAT) of our claim occurring for it from the resale against its purchasers or third parties, irrespective of whether the object of sale has been resold without or after processing. The purchaser shall remain authorised to collect this claim even after the assignment. Our authority to collect the claim ourselves remains unaffected by this. However, we undertake not to collect the claim as long as the purchaser fulfils its payment obligations from the collected proceeds, is not late with payments and, in particular, as long as no petition for the opening of settlement or insolvency proceedings has been filed, or payments have been suspended. If this is the case, however, we shall be entitled to demand that the purchaser notifies us of the assigned claims and the respective debtors, provides us with all information necessary for collection, hands over the associated documents and notifies the debtors (third parties) of the assignment.
- (5) The processing or transformation of the object of sale by the purchaser shall always be carried out on our behalf. If the object of sale is processed with other objects not belonging to us, we shall acquire co-ownership of the new object in the ratio of the value of the object of sale (final invoice amount, including VAT) to the other processed objects at the time of processing. In all other respects, the same shall apply to the item created by processing as to the object of sale delivered under reservation of title.
- (6) If the object of sale is inseparably combined with other objects not belonging to us, we shall acquire co-ownership of the new object in proportion to the value of the object of sale (final invoice amount, including VAT) to the other combined objects at the time of combination. If the combination is carried out in such a way that the purchaser's item is to be regarded as the main item, it shall be deemed to have been agreed that the purchaser shall transfer co-ownership to us for the respective share. The purchaser shall keep the sole ownership or co-ownership thus created in safe custody for us.
- (7) The purchaser shall also assign to us the claims to secure our claims against it, which arise against a third party as a result of the combination of the purchased item with real estate.
- (8) We shall be committed to release the securities to which we are entitled at the purchaser's request insofar as the realisable value of our securities exceeds the claims to be secured by more than 10%. The selection of the securities to be released shall be at our discretion.

§ 17 Place of jurisdiction – place of performance – data protection

- (1) If the purchaser is a merchant, our place of business shall be the place of jurisdiction. However, we shall also be entitled to sue the purchaser at its residential or business domicile court.
- (2) In the case of cross-border deliveries, the exclusive place of jurisdiction for all disputes arising directly or indirectly from the contractual relationship shall be Oytan, Federal Republic of Germany, insofar as the purchaser is a merchant within the meaning of the German Commercial Code. However, we are also entitled to sue the purchaser at any other court which is competent under the Brussels Regime, or under other legal provisions and international conventions.
- (3) If the purchaser is a consumer, the statutory place of jurisdiction shall apply. However, the court of our place of business shall also have additional jurisdiction if the consumer has an other place of residence, or has moved abroad after the conclusion of the contract.
- (4) Unless otherwise specified in the order confirmation, our place of business is the place of performance.
- (5) For all legal relationships between us and the purchaser under this contract, only the law governing the legal relationships of domestic parties at our registered office (German law) shall apply, under exclusion of any foreign law. The validity of the UN Convention on Contracts for the International Sale of Goods (CISG) is excluded.
- (6) Please note our data protection statement, which we have provided for you on our website <https://www.doyma.com/privacy-policy> under 'Privacy policy'.

Oytan, last updated January 2024



WE WILL BE HAPPY TO ADVISE !

GERMANY

DOYMA GmbH & Co

💧 SEALING SYSTEMS

🔥 FIRE CONTROL SYSTEMS

Industriestr. 43 - 57
28876 Oyten

Fon: +49 (0) 4207 / 91 66 - 0
Fax: +49 (0) 4207 / 91 66 - 199

info@doyma.de
www.doyma.de



CONTACT PERSON TEAM VG 1:

+49 (0) 4207 / 91 66 - 610
anfrage-vg1@doyma.de



CONTACT PERSON TEAM VG 2:

+49 (0) 4207 / 91 66 - 620
anfrage-vg2@doyma.de



CONTACT PERSON VG 3:

+49 (0) 4207 / 91 66 - 630
anfrage-vg3@doyma.de



CONTACT PERSON
FOR CONTRACT MATTERS AND ORDERS:

+49 (0) 4207 / 91 66 - 500
bestellung@doyma.de



CONTACT PERSON FOR EXPORT:

+49 (0) 4207 / 91 66 - 550
export@doyma.de

AUSTRIA

DOYMA GmbH & Co

💧 SEALING SYSTEMS

🔥 FIRE CONTROL SYSTEMS

Perfektastr. 61 Objekt 3/Top 2
1230 Wien

Fon: +43 (0) 1 / 698 1388
Fax: +43 (0) 1 / 698 1388 - 99

info@doyma.at
www.doyma.at



Each of our three sales territories
is supported by a competent,
highly motivated team.

Do you need support or have any
questions about our product product
ranges?

Then contact us.



YOU CAN FIND ALL CONTACT
PERSONS FOR THE INDIVIDUAL
TEAMS AT:

<https://www.doyma.com/company/contact-persons>

MEMBERSHIPS:

