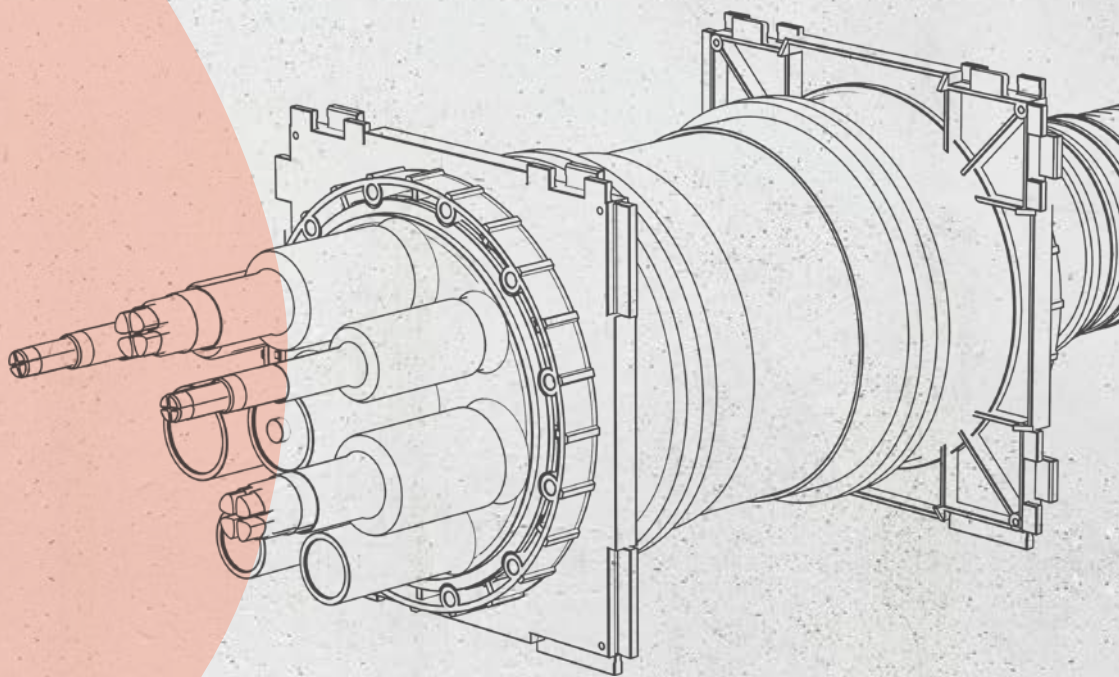




UGA

CATALOGUE 2026

Valid from 1 January 2026



Subject to technical changes. Prices specified in EUR/pc. not including statutory VAT. The specified prices are valid until new documentation is released.
Prices may change due to price fluctuations. Errors, omissions, typos and price changes excepted.



Content

Overview of water exposure5
 System overview and planning support6

BKD 150

UGA BKD 150 flange sleeve.8
 UGA BDK 150 on-wall flange sealing collar10
 UGA BKD 150 system cap11
 UGA BKD 150 system cap12
 UGA BKD 150 system insert.13

KD 110

UGA KD 110 flange sleeve.14
 UGA KD 110 system cap16
 UGA KD 110 system cap17
 UGA KD 110 system cap18

BKD 90

UGA BKD 90 flange sleeve.20
 UGA BKD 90 on-wall flange sealing collar22
 UGA BKD 90 system cap23
 UGA BKD 90 system cap24

KSS

UGA KSS.25

GPD

UGA GPD with interchangeable insert26
 UGA GPD with onion ring insert28

Accessories

Accessories for UGA cable entries.30

 Approvals, test reports, expert opinions32
 Glossary33
 Terms and conditions for returns34
 General terms and conditions35

Article number legend

- (Z) = number of cables to be sealed
- (D) = diameter of individual cables in mm
- (L) = length in mm

The UGA range is excluded from the DOYMA 25-year warranty.



MORE INFORMATION AND PRICES FOR OUR PRODUCTS CAN BE FOUND IN THE ADDITIONAL **PRODUCT RANGE PRICE LISTS** AND THE **BASIC PRINCIPLES OF SEALING AND FIRE CONTROL!**

DOYMA INFORMATION TOOLS



DOYMA website:
Orientation and up-to-date information



YouTube:
Installation videos and product demonstrations



www.Ausschreiben.de:
All DOYMA text for tenders on a free platform



Facebook:
Product news, events and occasions

DOYMA NEWSLETTER

YOUR BENEFITS

- Get the latest news
- Find useful information from the world of sealing and fire control systems
- Gain a good understanding of complex technical subject matter
- Read articles with a strong focus on practical applications



K-MT-8-102-03/2026

Subject to technical changes. Some illustrations include accessories.

DIN 18533 'BLACK TANK' – WATERPROOFING GUIDELINE 'WHITE TANK'

Overview of water exposure

NON-PRESSING WATER

DIN 18533 W1-E: SOIL MOISTURE AND NON-PRESSING WATER

W1.1-E: soil moisture

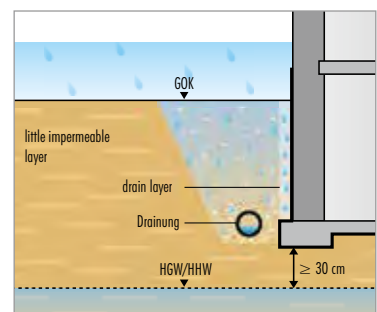
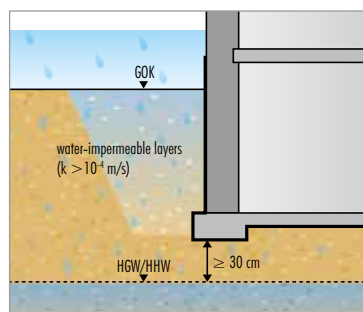
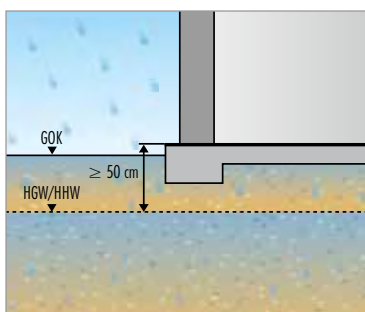
Soil/fill heavily water-permeable

W1.1-E: soil moisture

Non-pressing water
Soil/fill heavily water-permeable

W1.2-E: soil moisture

Non-pressing water
Soil/fill less water-permeable
with drainage in accordance with
DIN 4095



Waterproofing guideline, load class 2: soil moisture and non-standing seepage water

PRESSING WATER

DIN 18533 W2-E: PRESSING WATER

W2.1-E: standing water up to 3 m

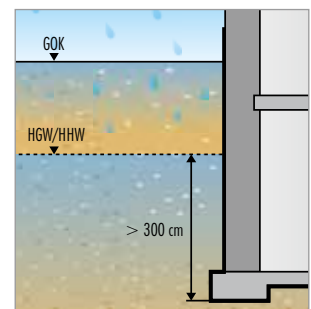
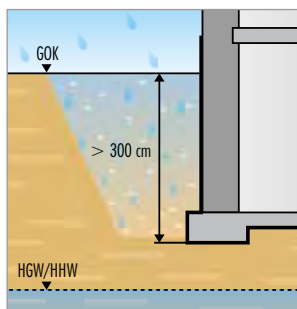
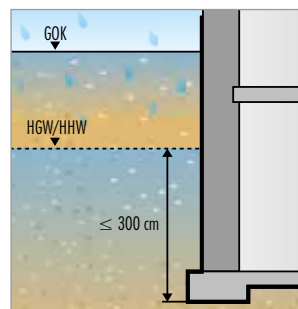
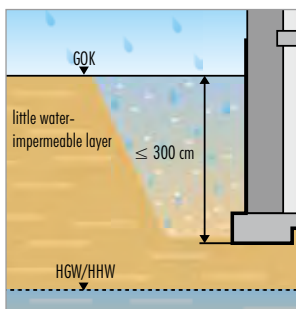
Soil/fill less water-permeable

W2.1-E: groundwater/ flood level up to 3 m

W2.2-E: standing water greater than 3 m

Soil/fill less water-permeable

W2.2-E: groundwater/ flood level up to 3 m



Waterproofing guideline, load class 1: Constant and temporary pressing water

WHATEVER HAPPENS – WE’LL HOLD YOU TIGHT!

UGA cable entries

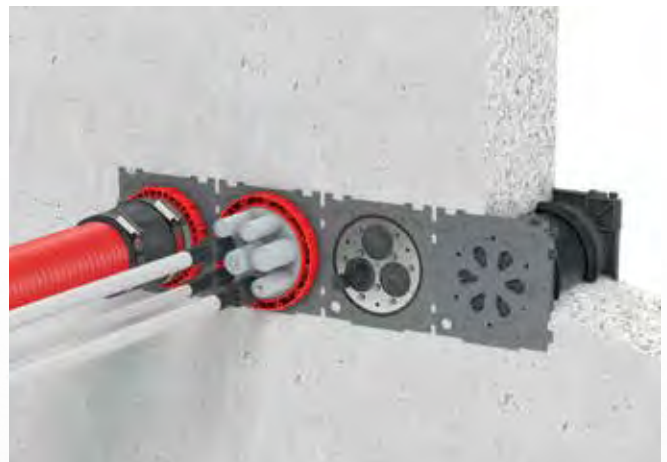
UGA CABLE ENTRIES ARE A SAFE SYSTEM FOR GAS AND WATERTIGHT SEALING OF CABLES AND CABLE PROTECTION PIPES IN WATERPROOF CONCRETE STRUCTURES.

UGA BKD AND KD SYSTEM

It doesn't get easier than this to seal cables and pipes! Cast-in flange sleeves embedded in the structure are instantly gas and watertight, and can be used flexibly or remain unused. System caps, inserts or cable protection pipes can be easily and safely connected to the flange sleeves.

THE ADVANTAGES OF THE UGA BKD AND KD SYSTEM

- Leak-tight against gas and pressing water immediately after embedding
- Quick and easy installation
- Variable assembling in batteries
- Lots of variants and connection options
- System cap with heat/cold-shrink technology or collar technology
- System inserts BKD 150-WA/(Z)x(D) and BKD 150-ZS/(Z)x(D) for sealing after cable routing
- Available in special design for twin/element walls



Flange sleeve

Flange sleeves with caps provide safe protection against pressing water even directly after embedding in concrete.



System cap

The system caps are inserted in the flange sleeve with a bayonet or screw closure.



System inserts

System inserts are placed inside the BKD 150 flange sleeves with bayonet closure. The bayonet catch mechanism ensures that the inserts do not slip.



KSS system

The KSS cable protection system is connected to the flange sleeves with system caps either via bayonet or screw threading.

UGA GPD SYSTEM

GPD rubber press seals are used to quickly and reliably seal cables and pipes. They can be installed in pipe sleeves, core bores and BKD/KD systems.

THE ADVANTAGES OF THE GPD SYSTEM

- Leak-tight against gas and pressing water
- Metal parts made of A2 stainless steel (A4 stainless steel upon request) and rubber seal elements made of premium EPDM rubber
- Quick installation
- Custom-made for your application
- Retrofitting possible
- Many variants available with ZS onion ring inserts



GPD with interchangeable insert

The rubber press seal can be installed without worrying about subsequent assignment. A corresponding interchangeable insert is used based on the cable or pipe assignment. The assignment can be changed at any time by switching out the interchangeable insert.

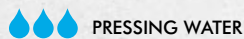


GPD with onion ring insert

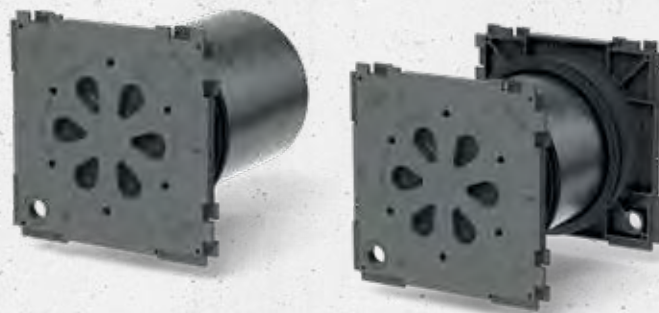
Cables and pipes with different diameters can be variably sealed. The cable diameters can be infinitely variably selected thanks to the tried-and-tested onion ring technology and adapted on site.

UGA BKD 150 flange sleeve

Including plug caps that are leak-tight against pressing water



- Use in unfinished structures to be made from water-proof concrete (white tank)
- With bayonet closure



PRODUCT ADVANTAGES

- Quick, easy installation
- Leak-tight against gas and pressing water immediately after installation due to plug cap
- Permanently reliable sealing
- Versatile variants and connection options thanks to precisely fitting system caps and inserts
- Assembling in batteries possible thanks to easy combination of flange sleeves
- No reworking required
- Special design for twin/element walls

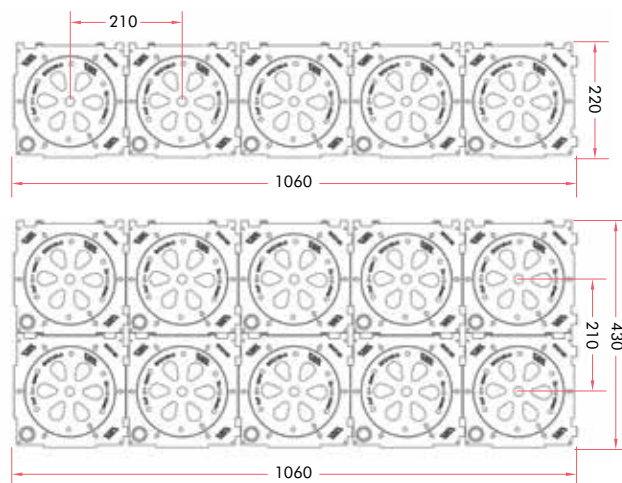
TECHNICAL DETAILS

- Single flange sleeve can be used for 50–500 mm wall thickness
- Double flange sleeve can be used for 100–500 mm wall thickness
- Design for wall thicknesses over 500 mm possible

PRODUCT SCOPE

- Flange sleeve for holding system plug cap with protective film, leak-tight against pressing water
- The flange sleeve has a sealing system. This ensures an absolute leak-tight connection to the concrete.

ASSEMBLING IN BATTERIES



Angular flange sleeve

Suitable for cables laid at an angle of 30°, 45° or 60° coming from any direction. With auxiliary frame and polystyrene wedge. Single or double flange sleeve available. Minimum wall thickness is 250 mm.



The UGA range is excluded from the DOYMA 25-year warranty.

K-MT-8-102-03/2026


Subject to technical changes. Some illustrations include accessories.

Product		Article number
BKD150-K/150	Single flange sleeve for wall thicknesses up to 500 mm	4 01 1 150 150 0 4
BKD150-K/200		4 01 1 150 200 0 4
BKD150-K/250		4 01 1 150 250 0 4
BKD150-K/300		4 01 1 150 300 0 4
BKD150-K/400		4 01 1 150 400 0 4
BKD150-K/500		4 01 1 150 500 0 4
BKD150-K2/150	Double flange sleeve for wall thicknesses up to 500 mm	4 02 1 150 150 0 4
BKD150-K2/200		4 02 1 150 200 0 4
BKD150-K2/250		4 02 1 150 250 0 4
BKD150-K2/300		4 02 1 150 300 0 4
BKD150-K2/400		4 02 1 150 400 0 4
BKD150-K2/500		4 02 1 150 500 0 4
BKD150-K2-EW/150	Double flange sleeve for twin/element walls with thicknesses up to 500 mm	–
BKD150-K2-EW/200		–
BKD150-K2-EW/250		–
BKD150-K2-EW/300		–
BKD150-K2-EW/400		–
BKD150-K2-EW/500		–

Article	Angle
Angular single flange sleeve	
BKD150-K-S30/(L)	30°
BKD150-K-S45/(L)	45°
BKD150-K-S60/(L)	60°
Angular double flange sleeve	
BKD150-K2-S30/(L)	30°
BKD150-K2-S45/(L)	45°
BKD150-K2-S60/(L)	60°

The distances of the auxiliary frame must be taken into account when assembling items in batteries one on top of the other.

UGA BKD 150 mounting flange

 PRESSING WATER

- Use in front of the wall
- For waterproof concrete structures (white tank)
- Ideal for renovations or existing buildings
- With bayonet closure



PRODUCT ADVANTAGES

- For sealing in front of a core bore in waterproof concrete in a wall or ceiling
- Quick, easy installation
- Mounting elements either made of electro-galvanised steel or A4 stainless steel
- For one-sided connection of a system cap or KSS system

TECHNICAL DETAILS

- Core bore diameter max. 150 mm
- Flange size: 235 × 235 mm

PRODUCT SCOPE

- On-wall flange sealing collar for holding system cap, flange seal, protective cap and mounting elements

Product	Article number
BKD150-AF-235/BE-VZ With mounting elements made of electro-galvanised steel	4 03 1 150 000 0 4
BKD150-AF-235/BE-A4 With mounting elements made of A4 stainless steel	4 03 1 150 000 4 4




ACCESSORIES – RECOMMENDED

For optimising the wall surface:
Sikaflex-11 FC

The UGA range is excluded from the DOYMA 25-year warranty.

UGA BKD 150 system cap

With sockets and heat shrink sleeves

 PRESSING WATER

- Use in existing flange sleeves and on-wall flange sealing collars
- Sealing of media lines using shrink technology
- With bayonet closure



PRODUCT ADVANTAGES

- Gas and watertight
- For routing media lines (cables or pipes) measuring 7–108 mm
- Sealing with heat or cold-shrink technology
- Compatible with other established systems
- Made of environmentally friendly and chemically highly resistant materials

System cap closed

Article	Number of cables	Article number
BKD150-D	0	4 10 1 000 150 0 4

System cap with heat shrink sleeve

Article	Cables	Outer diameter of pipe/cable	Article number
BKD150-D-1/80-TM	1	26–78 mm	4 10 1 080 150 0 4
BKD150-D-1/110-TM	1	34–108 mm	4 10 1 110 150 0 4
BKD150-D-3/59(3/3)-TM	3	22–57 mm	4 10 1 059 150 0 4
BKD150-D-7/38(7/6)-TM*	7	7–37 mm	4 10 1 038 150 0 4
BKD150-D-8/35(4/2)/25(4/2)-TM**	8	4 × 7–24 mm / 4 × 7–34 mm	4 10 1 035 150 0 4

System cap with cold shrink sleeve

Article	Number of cables	Outer diameter of pipe/cable
BKD150-D-1/80-KS	1	33–79 mm
BKD150-D-1/110-KS	1	38–109 mm
BKD150-D-3/59(3/3)-KS	3	21–57 mm
BKD150-D-7/38(7/6)-KS*	7	20–37 mm
BKD150-D-8/35(4/2)/25(4/2)-KS**	8	4 × 11–24 mm / 4 × 16–34 mm

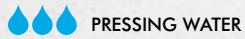
* BKD150-D-7 includes one closed socket in the scope of delivery, which can be opened up as needed. The scope of delivery includes six shrink sleeves.

** BKD150-D-8 includes four closed sockets in the scope of delivery (two each of 35 and 25 mm), which can be opened up as needed. The scope of delivery includes four shrink sleeves; further shrink sleeves are available as accessories in sets of four.

UGA BKD 150 system cap



With sleeve in collar technology



- Use in existing flange sleeves and on-wall flange sealing collars
- Connection of a cable protection pipe using collar technology
- With bayonet closure



PRODUCT ADVANTAGES

- Gas and watertight
- For connecting cable protection pipes or KSS tubes
- Compatible with other established systems


System cap with sleeve in collar technology

Product	Outer diameter of pipe/cable	KSS tube	Article no.
BKD150-D-MA65-75	65–75 mm	–	4 14 1 075 150 0 4
BKD150-D-MA75-90	75–90 mm	KSS-S 80	4 14 1 090 150 0 4
BKD150-D-MA100-110	100–110 mm	–	4 14 1 110 150 0 4
BKD150-D-MA115-125	115–125 mm	KSS-S 110	4 14 1 125 150 0 4
BKD150-D-MA130-145	130–145 mm	KSS-S 125	4 14 1 140 150 0 4
BKD150-D-MA150-160	150–160 mm	–	4 14 1 160 150 0 4
BKD150-D-MA160-170	160–170 mm	KSS-S 150	4 14 1 170 150 0 4

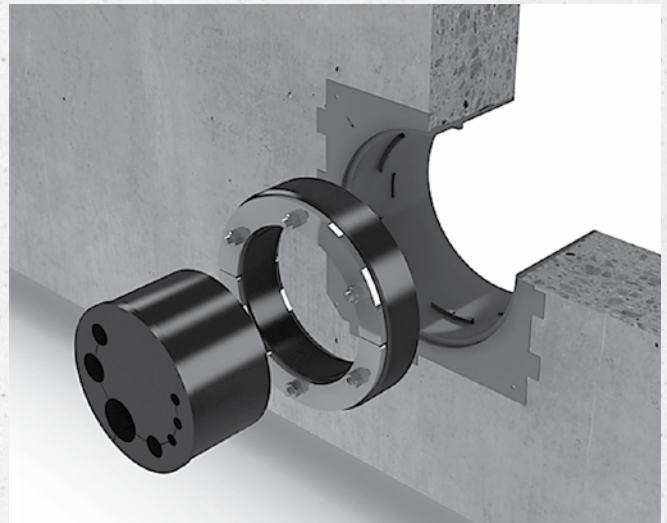
The UGA range is excluded from the DOYMA 25-year warranty.



UGA BKD 150 system insert

 PRESSING WATER

- Use in existing flange sleeves and on-wall flange sealing collars on the connection side
- With anti-slip protection
- With replaceable interchangeable or onion ring insert



PRODUCT ADVANTAGES

- Easy installation
- Split version for installing after cables have been laid
- With bayonet catch mechanism to ensure that insert does not slip
- Interchangeable insert custom-made for your application
- Can also be used as plugged insert

TECHNICAL DETAILS

- All metal parts made of stainless steel 1.4301 (V2A), optionally also stainless steel 1.4571/1.4404 (V4A)
- Split version
- Leak-tight against gas and pressing water

PRODUCT SCOPE

- BKD 150 system insert 34 mm (gasket insert) made of EPDM
- Interchangeable insert 60 mm or onion ring insert 40 mm made of EPDM



System insert with interchangeable insert

Product	Examples for max. utilisation*
BKD150-E-WE/V2A/EPDM (Z)x(D)	3 × outer Ø 42 or 5 × outer Ø 34 or 9 × outer Ø 24

* Other combinations with different diameters are also possible.



System insert with onion ring insert

Product	Cables	Outer diameter of cable	Outer diameter of cable
BKD150-E-ZS/V2A/EPDM 3x(22-54)	3	22–54 mm	488 1 001 150 24
BKD150-E-ZS/V2A/EPDM 6x(4-32)	6	4–32 mm	488 1 002 150 24
BKD150-E-ZS/V2A/EPDM 9x(4-25)	9	4–25 mm	488 1 003 150 24
BKD150-E-ZS/V2A/EPDM 4x(4-32) 6x(4-20)	10	4 × 4–32 mm / 6 × 4–20 mm	488 1 004 150 24

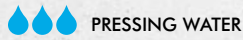
Individual onion ring inserts (optional)

Product	Number of cables	Outer diameter of cable
ZS/G/40/EPDM 22-54	1	22–54 mm
ZS/G/40/EPDM 4-20	1	4–20 mm
ZS/G/40/EPDM 4-25	1	4–25 mm
ZS/G/40/EPDM 4-32	1	4–32 mm

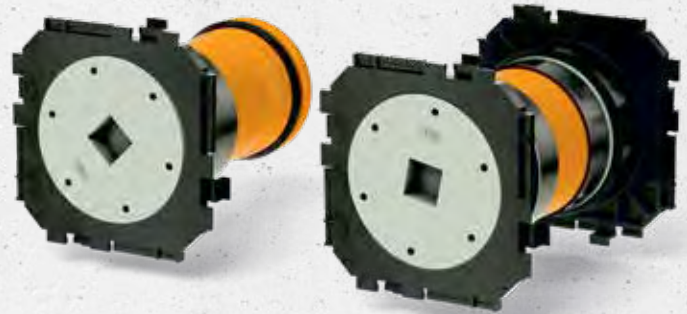
The UGA range is excluded from the DOYMA 25-year warranty.

UGA KD 110 sealing collar

Including plug caps that are leak-tight against pressing water



- Use in unfinished structures to be made from waterproof concrete (white tank)
- With screw closure



PRODUCT ADVANTAGES

- Quick, easy installation
- Leak-tight against gas and pressing water immediately after installation due to plug cap
- Permanently reliable sealing
- Versatile variants and connection options thanks to precisely fitting system caps and inserts
- Assembling in batteries possible thanks to easy combination of flange sleeves
- No reworking required
- Special design for twin/element walls

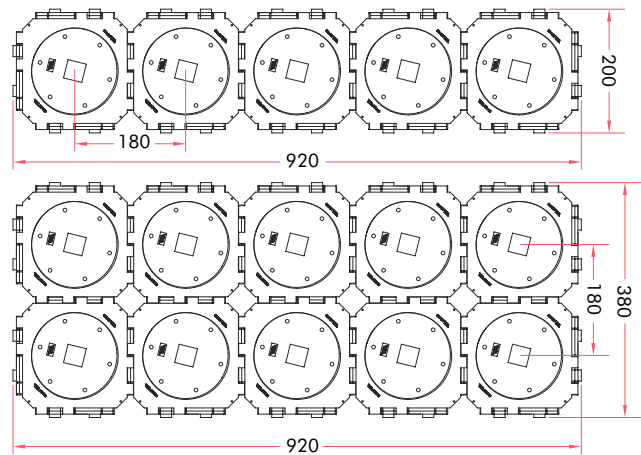
TECHNICAL DETAILS

- Single flange sleeve can be used for 80–500 mm wall thickness
- Double flange sleeve can be used for 140–500 mm wall thickness
- Design for wall thicknesses over 500 mm possible

PRODUCT SCOPE

- Flange sleeve for holding system plug cap with protective film, leak-tight against pressing water
- The flange sleeve has a sealing system. This ensures an absolute leak-tight connection to the concrete

ASSEMBLING IN BATTERIES



Angular flange sleeve

Suitable for cables laid at an angle of 30°, 45° or 60° coming from any direction. With auxiliary frame and polystyrene wedge. Single or double flange sleeve available. Minimum wall thickness is 250 mm.



The UGA range is excluded from the DOYMA 25-year warranty.

K-MT-8-102-03/2026

Subject to technical changes. Some illustrations include accessories.

Product		Article number
KD110-K/150	Single flange sleeve for wall thicknesses up to 500 mm	4 01 2 110 150 0 4
KD110-K/200		4 01 2 110 200 0 4
KD110-K/250		4 01 2 110 250 0 4
KD110-K/300		4 01 2 110 300 0 4
KD110-K/400		4 01 2 110 400 0 4
KD110-K/500		4 01 2 110 500 0 4
KD110-K2/150	Double flange sleeve for wall thicknesses up to 500 mm	4 02 2 110 150 0 4
KD110-K2/200		4 02 2 110 200 0 4
KD110-K2/250		4 02 2 110 250 0 4
KD110-K2/300		4 02 2 110 300 0 4
KD110-K2/400		4 02 2 110 400 0 4
KD110-K2/500		4 02 2 110 500 0 4
KD110-K2-EW/150	Double flange sleeve for twin/element walls with thicknesses up to 500 mm	–
KD110-K2-EW/200		–
KD110-K2-EW/250		–
KD110-K2-EW/300		–
KD110-K2-EW/400		–
KD110-K2-EW/500		–

Article	Angle
Angular single flange sleeve	
KD110-K-S30/(L)	30°
KD110-K-S45/(L)	45°
KD110-K-S60/(L)	60°
Angular double flange sleeve	
KD110-K2-S30/(L)	30°
KD110-K2-S45/(L)	45°
KD110-K2-S60/(L)	60°

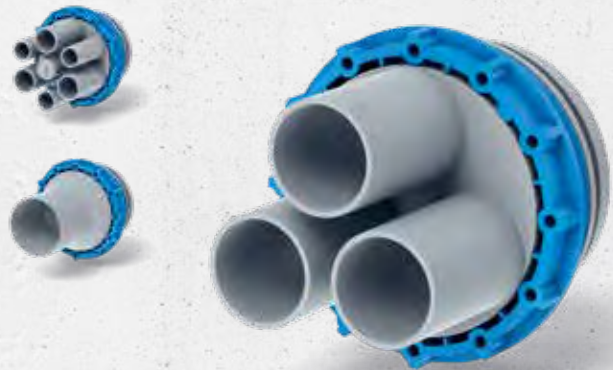
The distances of the auxiliary frame must be taken into account when assembling items in batteries one on top of the other.

UGA KD 110 system cover

With sockets and heat shrink sleeves

💧💧💧 PRESSING WATER

- Use in existing flange sleeves
- Sealing of media lines using shrink technology
- With screw closure



PRODUCT ADVANTAGES

- Gas and watertight
- For routing media lines (cables or pipes) measuring 7–78 mm
- Sealing with heat or cold-shrink technology and system inserts
- Compatible with other established systems
- Made of environmentally friendly and chemically highly resistant materials

System cap closed

Article	Number of cables	Article number
KD110-D	0	4 10 2 000 110 0 4

System cap with heat shrink sleeve

Article	Number of cables	Outer diameter of pipe/cable	Article number
KD110-D-1/80-TM	1	26–78 mm	4 10 2 080 110 0 4
KD110-D-3/46(3/3)-TM	3	16–45 mm	4 10 2 046 110 0 4
KD110-D-7/32(3/3)/25(4/3)-TM*	7	4 × 7–24 mm / 3 × 7–31 mm	4 10 2 032 110 0 4

System cap with cold shrink sleeve

Article	Number of cables	Outer diameter of pipe/cable
KD110-D-1/80-KS	1	33–79 mm
KD110-D-3/46(3/3)-KS	3	29–45 mm
KD110-D-7/32(3/3)/25(4/3)-KS*	7	4 × 14–24 mm / 3 × 19–31 mm

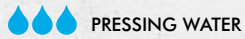
* KD110-D7 includes one closed socket (25 mm) in the scope of delivery, which can be opened up as needed. The scope of delivery includes six shrink sleeves.

The UGA range is excluded from the DOYMA 25-year warranty.

UGA KD 110 system cover



With sleeve in collar technology



- Use in existing flange sleeves
- Connection of a cable protection pipe using collar technology
- With screw closure



PRODUCT ADVANTAGES

- Gas and watertight
- For connecting cable protection pipes and KSS tubes
- Compatible with other established systems


System cap with sleeve in collar technology

Article	Outer diameter of pipe/cable	KSS tube	Article number
KD110-D-MA65-75	65–75 mm	–	4 14 2 075 110 0 4
KD110-D-MA75-89	75–89 mm	KSS-S 80	4 14 2 080 110 0 4
KD110-D-MA100-110	100–110 mm	–	4 14 2 110 110 0 4
KD110-D-MA115-125	115–125 mm	KSS-S 110	4 14 2 125 110 0 4

UGA KD 110 system cover



Conical system insert

 PRESSING WATER

- Use in existing flange sleeves on the connection side
- With screw closure



PRODUCT ADVANTAGES

- Conical system insert for sealing cables and cable protection pipes
- Easy installation
- Custom-made for your application
- Split version for installing after cables have been laid

The UGA range is excluded from the DOYMA 25-year warranty.



Article	Outer diameter of pipe/cable	Article number
KD110-D-DGM110	110 mm	4 11 2 110 110 0 4
KD110-E-WE/EPDM (Z) × (D)	1 to 28 bores	—

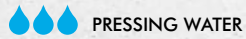
Allocation table for WA conical system insert

Article	Number of bores	D max. outer diameter*
KD110-E-WE/EPDM 1 × (D)	1 bore	up to 110 mm
KD110-E-WE/EPDM 3 × (D)	3 bores	up to 48 mm
KD110-E-WE/EPDM 5 × (D)	5 bores	up to 36 mm
KD110-E-WE/EPDM 7 × (D)	7 bores	up to 32 mm
KD110-E-WE/EPDM 9 × (D)	9 bores	up to 26 mm
KD110-E-WE/EPDM 13 × (D)	13 bores	up to 21 mm
KD110-E-WE/EPDM 19 × (D)	19 bores	up to 18 mm
KD110-E-WE/EPDM 28 × (D)	28 bores	up to 14 mm

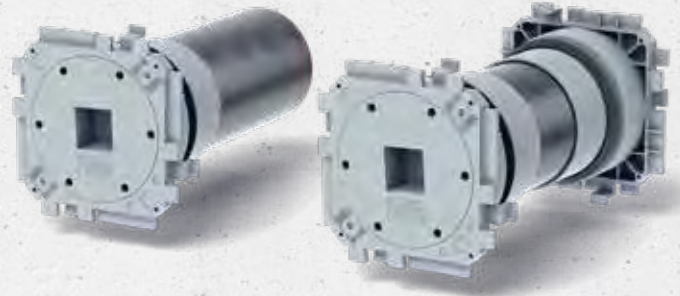
* Other combinations with different diameters are also possible.

UGA BKD 90 flange sleeve

Including plug caps that are leak-tight against pressing water



- Use in unfinished structures to be made from waterproof concrete (white tank)
- With bayonet closure



PRODUCT ADVANTAGES

- Quick, easy installation
- Leak-tight against gas and pressing water immediately after installation due to plug cap
- Permanently reliable sealing
- Versatile variants and connection options thanks to precisely fitting system caps and inserts
- Assembling in batteries possible thanks to easy combination of flange sleeves
- No reworking required
- Special design for twin/element walls

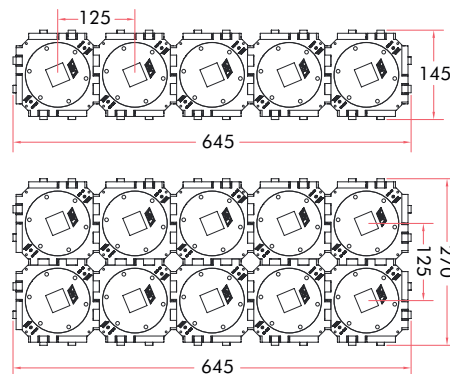
TECHNICAL DETAILS

- Single flange sleeve can be used for 60–500 mm wall thickness
- Double flange sleeve can be used for 100–500 mm wall thickness
- Design for wall thicknesses over 500 mm possible

PRODUCT SCOPE

- Flange sleeve for holding system plug cap with protective film, leak-tight against pressing water
- The flange sleeve has a sealing system. This ensures an absolute leak-tight connection to the concrete

ASSEMBLING IN BATTERIES



Angular flange sleeve

Suitable for cables laid at an angle of 30°, 45° or 60° coming from any direction. With auxiliary frame and polystyrene wedge. Single or double flange sleeve available. Minimum wall thickness is 200 mm.




The UGA range is excluded from the DOYMA 25-year warranty.

Product		Article number
BKD90-K/150	Single flange sleeve for wall thicknesses up to 500 mm	4 01 1 090 150 0 4
BKD90-K/200		4 01 1 090 200 0 4
BKD90-K/250		4 01 1 090 250 0 4
BKD90-K/300		4 01 1 090 300 0 4
BKD90-K/400		4 01 1 090 400 0 4
BKD90-K/500		4 01 1 090 500 0 4
BKD90-K2/150	Double flange sleeve for wall thicknesses up to 500 mm	4 02 1 090 150 0 4
BKD90-K2/200		4 02 1 090 200 0 4
BKD90-K2/250		4 02 1 090 250 0 4
BKD90-K2/300		4 02 1 090 300 0 4
BKD90-K2/400		4 02 1 090 400 0 4
BKD90-K2/500		4 02 1 090 500 0 4
BKD90-K2-EW/150	Double flange sleeve for twin/element walls with thicknesses up to 500 mm	—
BKD90-K2-EW/200		—
BKD90-K2-EW/250		—
BKD90-K2-EW/300		—
BKD90-K2-EW/400		—
BKD90-K2-EW/500		—

Article	Angle
Angular single flange sleeve	
BKD90-K-S30/(L)	30°
BKD90-K-S45/(L)	45°
BKD90-K-S60/(L)	60°
Angular double flange sleeve	
BKD90-K2-S30/(L)	30°
BKD90-K2-S45/(L)	45°
BKD90-K2-S60/(L)	60°

The distances of the auxiliary frame must be taken into account when assembling items in batteries one on top of the other.

UGA BKD 90 mounting flange

 PRESSING WATER

- Use in front of the wall
- For waterproof concrete structures (white tank)
- Ideal for renovations or existing buildings
- With bayonet closure



PRODUCT ADVANTAGES

- For sealing in front of a core bore in waterproof concrete in a wall or ceiling
- Quick, easy installation
- Mounting elements either made of electro-galvanised steel or A4 stainless steel
- For one-sided connection of a system cap or KSS system

TECHNICAL DETAILS

- Core bore diameter max. 85 mm
- Flange size: 150 × 150 mm

PRODUCT SCOPE

- On-wall flange sealing collar for holding system cap, flange seal, protective cap and mounting elements

Article	Article number
BKD90-AF-150/BE-VZ With mounting elements made of electro-galvanised steel	4 03 1 090 000 0 4
BKD90-AF-150/BE-A4 With mounting elements made of A4 stainless steel	4 03 1 090 000 4 4



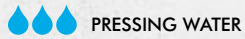
ACCESSORIES – RECOMMENDED

For optimising the wall surface:
Sikaflex-11 FC

The UGA range is excluded from the DOYMA 25-year warranty.

UGA BKD 90 system cover

With sockets and heat shrink sleeves



- Use in existing flange sleeves and on-wall flange sealing collars
- Sealing of media lines using shrink technology
- With bayonet closure



PRODUCT ADVANTAGES

- Gas and watertight
- For routing media lines (cables or pipes) measuring 7–74 mm
- Sealing with heat or cold-shrink technology
- Made of environmentally friendly and chemically highly resistant materials

System cap closed

Article	Number of cables	Article number
BKD90-D	0	4 10 1 000 090 0 4

System cap with heat shrink sleeve

Article	Number of cables	Outer diameter of pipe/cable	Article number
BKD90-D-1/75-TM	1	26–74 mm	4 10 1 075 090 0 4
BKD90-D-3/30-TM	3	7–29 mm	4 10 1 030 090 0 4
BKD90-D-5/20-TM	5	7–19 mm	4 10 1 020 090 0 4

System cap with cold shrink sleeve

Article	Number of cables	Outer diameter of pipe/cable
BKD90-D-1/75-KS	1	33–74 mm
BKD90-D-3/30-KS	3	16–29 mm
BKD90-D-5/20-KS	5	11–20 mm

UGA BKD 90 system cap

With sleeve in collar technology

💧💧💧 PRESSING WATER

- Use in existing flange sleeves and on-wall flange sealing collars
- Connection of a cable protection pipe using collar technology
- With bayonet closure



PRODUCT ADVANTAGES

- Gas and watertight
- For connecting cable protection pipes and KSS tubes

System cap with sleeve in collar technology

Article	Outer diameter of pipe/cable	KSS tube	Article number
BKD90-D-MA40-50	40–50 mm	–	4 14 1 050 090 0 4
BKD90-D-MA50-63	50–63 mm	–	4 14 1 063 090 0 4
BKD90-D-MA65-75	65–75 mm	–	4 14 1 075 090 0 4
BKD90-D-MA75-90	75–90 mm	KSS-S 80	4 14 1 090 090 0 4
BKD90-D-MA100-112	100–112 mm	–	4 14 1 110 090 0 4

The UGA range is excluded from the DOYMA 25-year warranty.



UGA KSS

Cable protection system

💧💧💧 PRESSING WATER

- Cable protection tube for gas and watertight cable routing
- Easy connection to flange sleeve, mounting flange, system cap



PRODUCT ADVANTAGES

- Connection is leak-tight against gas and pressing water
- Cable protection through elastic connection in the event that the building or ground moves
- Smooth inner surface for gentle cable tension
- Versatile connection components
- Compatible with other established systems and cable protection pipes
- Suitable for embedding in concrete
- Can be laid as empty duct for subsequent cable routing
- Flexible, mechanically strong plastic spiral tube

CABLE PROTECTION AND FLEXIBILITY

The KSS cable protection systems from UGA provide reliable protection for cables from moisture and mechanical strain. The versatile connection components allow for connection to flange sleeves, pipe sleeves, core bores and other cable protection tubes and pipes. It is also possible to establish a connection that is leak-tight against gas and pressing water between two buildings at any time.

No costly, time-consuming earthworks are required when a cable assignment is changed. KSS systems are available in diameters of 80, 110, 125 and 150 mm. They consist of mechanically strong, flexible plastic and can be embedded in concrete without problems. The minimum bending radius is between one half and one metre depending on the tube diameter.

KSS cable protection system

Plastic spiral tube, roll material with 25m per roll.


Article	Inner diameter	Bending radius at 20°C
KSS80-S	80	540
KSS110-S	110	740
KSS125-S	125	830
KSS150-S	150	990



UGA GPD with interchangeable insert



Rubber press seal

 PRESSING WATER

- Installation in preinstalled pipe sleeve or core bore in waterproof concrete (white tank)
- Hinged version, for pipes and cables that are already installed
- With replaceable interchangeable insert



PRODUCT ADVANTAGES

- Custom-made for your application
- For retrofitting around existing pipes and cables
- Quick installation
- Interchangeable insert with collar for a secure hold in the rubber press seal
- The split interchangeable insert inside can be replaced with a new one without the entire component having to be removed

TECHNICAL DETAILS

- Certified under FHRK test regulation GE 101 (no. G 30 322-7-2) – FHRK 60 D10
- All metal parts made of stainless steel 1.4301 (V2A), optionally also stainless steel 1.4571/1.4404 (V4A)
- Split version
- Leak-tight against gas and pressing water
- Can accommodate slight axial movements

PRODUCT SCOPE

- Rubber press seal 60 mm (gasket insert) made of EPDM
- Interchangeable insert 60 mm with collar (except WE 125) made of EPDM

The UGA range is excluded from the DOYMA 25-year warranty.



GPD with interchangeable insert

Article	Examples for max. utilisation*
GPD100/G/60/WE65/V2A/EPDM (Z)x(D)	3 × Ø 22 or 5 × Ø 17 or 9 × Ø 12
GPD125/G/60/WE85/V2A/EPDM (Z)x(D)	3 × Ø 30 or 5 × Ø 24 or 9 × Ø 16
GPD150/G/60/WE110/V2A/EPDM (Z)x(D)	3 × Ø 42 or 5 × Ø 34 or 9 × Ø 24
GPD200/G/60/WE125/V2A/EPDM (Z)x(D)	3 × Ø 50 or 5 × Ø 38 or 9 × Ø 27

* Other combinations with different diameters are also possible.

Individual interchangeable insert (optional)

Article
WE65/G/60/EPDM (Z)x(D)
WE85/G/60/EPDM (Z)x(D)
WE110/G/60/EPDM (Z)x(D)
WE125/G/60/EPDM (Z)x(D)

UGA GPD with onion ring insert

Rubber press seal

💧💧 PRESSING WATER

- Installation in preinstalled pipe sleeve or core bore in waterproof concrete (white tank)
- Variable sealing of cables or pipes with different diameters
- Hinged version, for pipes and cables that are already installed
- With replaceable onion ring inserts



PRODUCT ADVANTAGES

- Easy installation by separating GPD base and onion ring inserts
- Onion ring inserts can be adapted to the piping on site
- Slip-through protection in the form of two step tabs
- Onion ring inserts in certain sizes can be replaced by interchangeable inserts upon request
- Reserve openings sealed with supplied plugs

TECHNICAL DETAILS

- All metal parts made of stainless steel 1.4301 (V2A), optionally also stainless steel 1.4571/1.4404 (V4A)
- Gas and watertight
- Split version
- Feed-through of up to 10 cables of different diameters possible

PRODUCT SCOPE

- Rubber press seal 40 mm (gasket insert) made of EPDM
- Onion ring insert 40 mm with collar made of EPDM

The UGA range is excluded from the DOYMA 25-year warranty.



GPD with onion ring insert

Inner diameter of pipe sleeve/ core bore	Article	Outer diameter of pipe/cable	Article number
80	GPD80/G/40/ZS/V2A/EPDM 1x(4-32)	1 × (4-32)	4 88 8 001 080 2 4
	GPD80/G/40/ZS/V2A/EPDM 2x(4-25)	2 × (4-25)	4 88 8 002 080 2 4
	GPD80/G/40/ZS/V2A/EPDM 3x(4-20)	3 × (4-20)	4 88 8 003 080 2 4
100	GPD100/G/40/ZS/V2A/EPDM 1x(22-54)	1 × (22-54)	4 88 8 001 100 2 4
	GPD100/G/40/ZS/V2A/EPDM 2x(4-32) + 2x(4-25)	2 × (4-32) + 2 × (4-25)	4 88 8 002 100 2 4
	GPD100/G/40/ZS/V2A/EPDM 2x(4-32) + 3x(4-20)	2 × (4-32) + 3 × (4-20)	4 88 8 003 100 2 4
	GPD100/G/40/ZS/V2A/EPDM 3x(4-32)	3 × (4-32)	4 88 8 004 100 2 4
	GPD100/G/40/ZS/V2A/EPDM 8x(4-20)	8 × (4-20)	4 88 8 005 100 2 4
125	GPD125/G/40/ZS/V2A/EPDM 1x(22-54)	1 × (22-54)	4 88 8 001 125 2 4
	GPD125/G/40/ZS/V2A/EPDM 3x(4-32)	3 × (4-32)	4 88 8 002 125 2 4
	GPD125/G/40/ZS/V2A/EPDM 6x(4-25)	6 × (4-25)	4 88 8 003 125 2 4
	GPD125/G/40/ZS/V2A/EPDM 10x(4-20)	10 × (4-20)	4 88 8 004 125 2 4
150	GPD150/G/40/ZS/V2A/EPDM 3x(22-54)	3 × (22-54)	4 88 8 001 150 2 4
	GPD150/G/40/ZS/V2A/EPDM 4x(4-32) + 6x(4-20)	4 × (4-32) + 6 × (4-20)	4 88 8 002 150 2 4
	GPD150/G/40/ZS/V2A/EPDM 6x(4-32)	6 × (4-32)	4 88 8 003 150 2 4
	GPD150/G/40/ZS/V2A/EPDM 9x(4-25)	9 × (4-25)	4 88 8 004 150 2 4
160	GPD160/G/40/ZS/V2A/EPDM 3x(22-54)	3 × (22-54)	4 88 8 001 160 2 4
	GPD160/G/40/ZS/V2A/EPDM 4x(4-32) + 6x(4-20)	4 × (4-32) + 6 × (4-20)	4 88 8 002 160 2 4
	GPD160/G/40/ZS/V2A/EPDM 6x(4-32)	6 × (4-32)	4 88 8 003 160 2 4
	GPD160/G/40/ZS/V2A/EPDM 9x(4-25)	9 × (4-25)	4 88 8 004 160 2 4
200	GPD200/G/40/ZS/V2A/EPDM 3x(22-54) + 4x(4-25) + 3 × (4-20)	3 × (22-54) + 4 × (4-25) + 3 × (4-20)	4 88 8 001 200 2 4

Individual onion ring inserts (optional)

Article	Outer diameter of pipe/cable	Article number
ZS/G/40/EPDM 4-20	4-20	4 99 8 001 000 0 4
ZS/G/40/EPDM 4-25	4-25	4 99 8 002 000 0 4
ZS/G/40/EPDM 4-32	4-32	4 99 8 003 000 0 4
ZS/G/40/EPDM 22-54	22-54	4 99 8 004 000 0 4

Accessories for UGA cable entries



VS sealing plug for system cap

For sealing unused cap sockets. Can be removed again if socket is used later.

For BKD 150

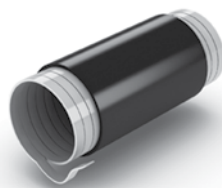
Article	For system cap	Article number
VS25	BKD 150-D8/35/25	4 99 0 900 025 0 4
VS35	BKD 150-D8/35/25	4 99 0 900 035 0 4
VS38	BKD 150-D7/38	4 99 0 900 038 0 4
VS58/60	BKD 150-D3/59	4 99 0 900 059 0 4

For KD 110

Article	For system cap	Article number
VS25	KD 110-D7/32/25	4 99 0 900 025 0 4
VS32/34	KD 110-D7/32/25	4 99 0 900 032 0 4
VS46	KD 110-D3/46	4 99 0 900 046 0 4

For BKD 90

Article	For system cap	Article number
VS20	BKD 90-D5/20	4 99 0 900 020 0 4
VS30	BKD 90-D3/30	4 99 0 900 030 0 4



KS cold-shrink sleeve

For easy and quick installation without tools, in any weather. Available for all system caps.

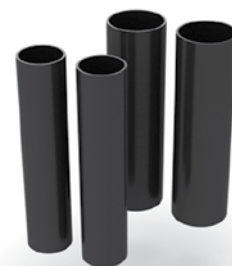
Article	For cable diameter	Length
KSM29/11/228	11–29 mm	228 mm
KSM39/16/180	16–39 mm	180 mm
KSM49/20/305	20–49 mm	305 mm
KSM71/21/230	21–71 mm	230 mm
KSM92/33/230	33–92 mm	230 mm
KSM123/38/223	38–123 mm	223 mm
KSM146/70/230	70–146 mm	230 mm



3-core breakout boots / 4-core breakout boots

Heat-shrink technology, for sealing three or four cables in one cover socket.

Article	For system cap	Number of cables	Outer diameter of cable	Article number
AK/75/3F/8-29	BKD 150-D3/59, KD 150-D3/60	3	8–29	4 99 0 910 753 0 4
AK/75/4F/8-29	BKD 150-D3/59, KD 150-D3/60	4	8–29	4 99 0 910 754 0 4
AK/50/3F/5-22	BKD 150-D7/38, BKD 150-D8/35/25, KD 150-D8/35/25, KD 110-D7/32/25	3	5–22	4 99 0 910 503 0 4
AK/50/4F/5-20	BKD 150-D7/38, BKD 150-D8/35/25, KD 150-D8/35/25, KD 110-D7/32/25	4	5–20	4 99 0 910 504 0 4
AK/35/3F/2-12	BKD 90-D3/30, BKD 150-D8/53/25, KD 150-D8/53/25, KD 110-D7/32/25	3	2–12	4 99 0 910 353 0 4
AK/35/4F/2-13	BKD 90-D3/30, BKD 150-D8/53/25, KD 150-D8/53/25, KD 110-D7/32/25	4	2–13	4 99 0 910 354 0 4



Heat-shrink sleeve set

Consisting of two heat-shrink sleeves for 7–24 mm cable diameter and two heat-shrink sleeves for 7–34 mm cable diameter.

Article	For system cap
TM-Set D8/35/25	BKD 150-D8/35/25

The UGA range is excluded from the DOYMA 25-year warranty.



KSS cable protection system

Plastic spiral tube, roll material with 25m per roll.

Article	Inner diameter	Bending radius at 20°C
KSS80-S	80	540
KSS110-S	110	740
KSS125-S	125	830
KSS150-S	150	990



EPDM collars

EPDM collars	Pipe diameter [mm]	KSS tube
EPDM collar (75–89)/(75–89)	75–89	KSS-S 80
EPDM collar (105–120)/(105–120)	105–120	KSS-S 110
EPDM collar (120–137)/(120–137)	120–137	KSS-S 125
EPDM collar (160–175)/(160–175)	160–175	KSS-S 150



ASH spacer

For parallel routing of KSS tubes.

Article	Arrangement	KSS
ASH90/2x4	Two vertical, four horizontal in a row	KSS 80
ASH125/2x3	Two vertical, three horizontal in a row	KSS 110
ASH140/2x3	Two vertical, three horizontal in a row	KSS 125
ASH170/2x3	Two vertical, three horizontal in a row	KSS 150

GSS articulated spanner

With adjustable flank. Suitable for installing all system caps and KSS systems.

Article	Article number
GSS	4 99 0 920 000 0 4



Torque screwdriver 5 Nm

With fixed torque.

Article
DMS5Nm

Slip-through protection in the form of step tabs

For GPD with interchangeable insert, set of two.

Article
LA step tab for GPD

KR cable cleaner

For environmentally friendly cleaning of cables of all types; cleans even stubborn dirt. Odourless and leaves no residues upon evaporating. Flange with 1000 ml.



Artikel
KR/1-Liter

Sikaflex 11 FC

Artikel
Sikaflex 11 FC — elastische Dichtmasse zur Optimierung der Wandoberfläche

Approvals, test reports, expert opinions

UGA cable entries

PRESSURE AND LEAKAGE TESTS

Sequ. no.	Testing institute/Prüfberichtsnummer	Test content	Test result classification	Product -variant/typ	Product
1	Lloyd's Register / DTM2020617/1	Water-tightness	Test pressure 2.5 bar	BKD150-K2/300 BKD150-D	BKD150
2	Lloyd's Register / DTM2020617/1		Test pressure 2.5 bar	BKD150-K2/(L) BKD150-D	BKD150
3	Lloyd's Register / DTM2020617/2		Test pressure 2.5 bar	BKD150-K2/(L) BKD150-D-3/59(3/3)-TM	BKD150
4	Lloyd's Register / DTM2120160/2		Test pressure 2 bar	BKD150-K/(L) BKD150-E-ZS/V2A/EPDM/4x(4-32)+6x(4-20)	BKD150
5	Lloyd's Register / DTM2120160/5		Test pressure 2 bar	BKD150-K/(L) BKD150-E-WE/V2A/EPDM (8x20)	BKD150
6	LRQA / DEU2220257-6		Test pressure 1 bar	BKD150-K/(L) BKD150-D-MA160-170 Kabuflex R plus Typ 750	BKD150
7	LRQA / DEU2220257-8		Test pressure 1 bar	BKD150-AF/235/BE	BKD150
			Test pressure 2.5 bar	Weicon Flex 310 M® Superhaft	
8	LRQA / DEU2321461-7		Test pressure 2.5 bar	BKD150-AF-235 _ BE _ Sikaflex	BKD150
9	LRQA / DEU2321461-10		Test pressure 2 bar	BKD150-K2/(L) BKD150-E-ZS/V2A/EPDM 3x(22-54)	BKD150
10	Lloyd's Register / DTM2120160/1		Test pressure 2.5 bar	BKD90-K/(L) BKD90-D-3/30	BKD90
11	Lloyd's Register / DTM2120160/9		Test pressure 2.5 bar	BKD90-K2/300 BKD90-D	BKD90
12	LRQA / DEU2421241-5		Test pressure 2 bar	BKD90-K/(L) BKD90-D-MA75-89 KSS80-S	BKD90
13	LRQA / DEU2220257-3		Test pressure 2.5 bar	KD110-K/(L) KD110-D-DGM110	BKD110
14	LRQA / DEU2220257-4	Test pressure 2.5 bar	KD110-K/(L) KD110-E-WE/EPDM/3x40	KD110	

FHRK TESTS

Sequ. no.	Testing institute	Test content	Test result classification	Product
1	iro GmbH Oldenburg 21/01/2019, rubber press seal with interchangeable insert Document number: G 30 322-7-2	Test GE 101 gas/water-tightness	Test pressure 1,0 bar	Rubber press seal with interchangeable insert GPD (A)/G/2WE(A1)/(Z)x(D)

 TEST CERTIFICATES PROVIDED UPON REQUEST

Glossary

- PRESSING WATER** Water exerting hydrostatic pressure on the seal.
- Corresponds to load class 1 as per the Waterproofing guideline
 - Corresponds to water exposure class W2-E 'Pressing water' as per DIN 18533
- NON-PRESSING WATER** Does not exert any pressure on the seal, or only temporarily exerts slight hydrostatic pressure.
- Corresponds to load class 2 as per the Waterproofing guideline
 - Corresponds to water exposure class W1-E 'Soil moisture and non-pressing water' as per DIN 18533
- WP CONCRETE** Waterproof or water-impermeable concrete

Terms and conditions for returns

PREREQUISITE

1. Goods to be returned within max. six months of the date of purchase.
2. Returns must be sent to DOYMA as 'CARRIAGE PAID'.
3. Goods must be in perfect condition.

TERMS AND CONDITIONS

1. Returns **must be reported in writing** and confirmed in writing by DOYMA – returns that are not reported first will either be returned to the sender (carriage to be paid by you) or will be subject to an administrative fee of EUR 25 (in addition to the incurred costs of the return itself).
2. Advance freight charges – including pro rata – will be calculated.
3. You must state your VAT number.

CHARGES FOR PROCESSING RETURNS

A processing fee of min. €75.00 will be charged to cover the cost of goods handling, quality control, reworking and restoration of saleability in current form, packaging, etc. The listed costs apply to standard designs as per the applicable price list for the products in question.

PROCESSING FEES FOR THE PRODUCT RANGES

Product ranges	Product/type	Dimensions	Costs
Curaflex®	A, C, 3000, Nova Uno	Up to DN 350	25%
		Up to DN 500	35%
Quadro-Secura®*	–	–	25%
Curaflex®*	–	–	35%
DOYMAfix®***	–	–	30%
UGA/HKD/link chains*	–	–	50%

* Goods manufactured to order are excluded ** excl. expansion foam

NO RETURNS ACCEPTED

- For any product where a delivery note/order confirmation or invoice number has not been specified
- For custom solutions
- For products with a shelf life, such as varnish, filler, lubricants, expansion foam
- For cable conduits, gas house lead-ins, MIS, ADS, Quick-Types and the like
- For any types or dimensions not mentioned

Please send your written query to Export@doyma.de.

Subject to changes. Valid from 01/01/2026

General Terms and Conditions

§ 1 General/scope of validity

- (1) Our terms and conditions of sale apply exclusively. They apply to all our offers, sales, deliveries and services. Insofar as the purchaser was not able to take note of them at the time the contract was concluded, they shall nevertheless apply if the purchaser was aware of or must have been aware of them from previous business transactions.
- (2) We do not recognise any terms and conditions of business of the purchaser that contradict or deviate from our terms and conditions of sale. If we carry out the delivery or service required by us in knowledge of the purchaser's terms and conditions of business, we also do not acknowledge such terms and conditions of the purchaser which are not contradicted by our terms and conditions of sale.
- (3) Our terms and conditions of sale shall only apply to commercial entities within the meaning of § 310 of the German Civil Code (BGB), i.e. not if the customer's order cannot be attributed to its commercial or self-employed professional activity (consumer in accordance with § 13 BGB).
- (4) Verbal agreements have not been made. All future amendments to this contract must be made in writing or in text form in accordance with § 126b BGB (in particular by fax or email); this also applies to any agreement to waive the requirement for written arrangements. Our sales representatives are not authorised to waive this requirement verbally. Changes will therefore only become effective when they have been formally confirmed by the Management Board or Sales Management.

§ 2 Offer – conclusion of contract

- (1) Our offers are subject to change without notice, unless otherwise specified.
- (2) If the purchaser's order is an offer to conclude a contract, we may accept this offer within 10 days.
- (3) We reserve all property rights and copyrights to illustrations, drawings, calculations and other documents. This applies in particular to such written documents which are designated as "confidential". Before passing them on to third parties, the purchaser must obtain our express consent in writing or text form in accordance with § 126b BGB (in particular by fax or email).

§ 3 Prices – terms of payment

- (1) Unless otherwise agreed, all prices are quoted ex-warehouse or ex-works including the packaging. From a gross goods value of EUR 1250.00, our prices include free delivery within Germany. Freight, insurance, postage and all other agreed special or ancillary services will be charged additionally at reasonable prices. This shall also apply if the purchaser orders special packaging or shipment.
- (2) Our employees are only entitled to collect payment if this has been confirmed in writing to the purchaser by our Management beforehand.
- (3) Payment by the purchaser is due immediately. The purchaser shall be notified that it is in default of payment at the latest within 30 days upon receipt of the invoice. If the purchaser is late with payment, it is obliged to reimburse a fixed administrative fee of EUR 1.50 for each (further) reminder.
- (4) The purchaser can only offset this if its counterparties are legally established, undisputed or acknowledged by us.
- (5) We are entitled to exercise a right of retention on account of all claims arising from the business relationship with the purchaser.

§ 4 Delivery – delivery time

- (1) The commencement of the delivery period stated by us presupposes that all technical questions have been clarified and that the purchaser has fulfilled its obligations in a timely and proper manner. The defence of non-performance of the contract remains reserved.
- (2) In the event of force majeure or disruption of operations occurring at our premises or our suppliers' premises, e.g. due to riots, strikes or lockouts, which temporarily prevent us from delivering the object of purchase on the agreed date or within the agreed deadlines at no fault of our own, the delivery times or delivery periods specified by us will be postponed for the duration of the disruption in performance caused by these circumstances. If a corresponding disturbance leads to a delay in performance of more than two months, the purchaser shall be entitled to withdraw from the contract.
- (3) If the object of the contract is not a concrete object, we are obliged to deliver an object of average quality and type from the stipulated category. This obligation to procure such an item is limited to the stock in our warehouse or goods from our production plant. If we do not produce the stipulated goods or if we have not yet received them, we reserve the right to have our supplier take care of delivery. This shall apply mutatis mutandis in the event of a special purchase of goods which we have not yet received as property. We shall not be liable for any non-delivery by our supplier for which we are not responsible. This shall also apply in the event of a delay in delivery by our supplier for which we are not responsible.
- (4) The manufacturer reserves the right to make design or shape changes, deviations in colour and changes to the scope of delivery during the delivery period, provided that the object of purchase is not significantly changed and the change is reasonable for the purchaser.
- (5) We reserve the right to charge a surcharge for very small quantities.

§ 5 Delay in delivery

- (1) We are liable for delays in accordance with legal provisions, provided
 - the underlying purchase contract is a fixed transaction within the meaning of §§ 361 BGB and 376 of the German Commercial Code (HGB);
 - the purchaser is no longer interested in the further performance of the contract following a delay in delivery for which we are at fault;
 - the delay in delivery is the result of a willful or grossly negligent breach of contract on our part, or on the part of our representatives or vicarious agents.
- (2) We are liable in accordance with legal provisions, but said liability is limited to foreseeable, typical damages if
 - the delay in delivery is the result of a willful or grossly negligent breach of contract on our part;
 - the delay in delivery is the result of a slightly negligent breach on our part of an essential contractual obligation.
- (3) If our delay in delivery is only the result of a breach of a non-essential contractual obligation, for which we are at fault, the purchaser's claim is limited to 20% of the delivery value.

§ 6 Endangerment of the performance/insolvency

- (1) If it becomes apparent to us after conclusion of the contract that the (further) fulfilment of the contract is endangered due to a lack of performance by the purchaser, we shall be entitled to refuse the provision of advance performance under this contract until the corresponding consideration has been effected by the purchaser or security has been provided for it.
- (2) We shall be entitled to withdraw from the contract or to terminate it without notice if, despite a reasonable grace period for the provision of the corresponding counter-performance, the purchaser fails to provide the security on a performance upon counter-performance basis.
- (3) If the purchaser is insolvent or over-indebted, the opening of insolvency or composition proceedings is applied for or opened against its assets, we are entitled to withdraw from the contract or to terminate it without setting a grace period.
- (4) If we terminate or withdraw from the contract in accordance with paragraphs 2 or 3, we shall be entitled to claim damages from the purchaser instead of performance or reimbursement of expenses.

§ 7 Acceptance

- (1) The purchaser is obliged to carry out the actions necessary for our fulfilment of the contract, in particular to accept the goods. If it violates this obligation and cannot prove that it is not at fault, it shall be obliged to reimburse us for the damage incurred in this respect, in particular additional expenses. We reserve the right to make further claims.
- (2) If the purchaser defaults on acceptance of the object of purchase for more than 14 days from receipt of the notification of readiness for delivery or proper first delivery by us, we may grant the purchaser a grace period of 14 days with the declaration that we will reject acceptance of the object of purchase after expiry of this period.
After this grace period has elapsed, we shall be entitled to withdraw from the purchase contract by means of a written declaration or to demand performance for non-performance. The setting of a grace period is not necessary if the purchaser seriously and definitively refuses acceptance or is obviously unable to pay the purchase price even if a grace period is granted. In this case, we are entitled to demand lump-sum compensation of 10% of the agreed purchase price for lost profit. However, the purchaser reserves the right to prove that we have suffered no damages or less than that lump-sum amount. We also reserve the right to assert and produce evidence of higher damages.

§ 8 Shipment – transfer of risk

- (1) Unless otherwise specified in the order confirmation, delivery "ex-warehouse" or "ex-works", i.e. EXW Oytan (Incoterms 2020), shall be agreed upon.
- (2) We will not take back any packaging other than pallets and lattice boxes. The purchaser has the opportunity to have our packaging material disposed of in accordance with our agreement through Interseroh.
- (3) Exchange pallets and lattice boxes which are not exchanged will be invoiced. Exchange pallets will be charged at net EUR 16.00 and box pallets at EUR 132.50 each.
- (4) We will only take out transport insurance if this is contractually agreed. The corresponding costs shall be borne by the purchaser.
- (5) We shall be entitled to make partial deliveries to a reasonable extent.

§ 9 General rules regarding defects of the purchased items

- (1) All claims of the purchaser arising from defects depend on the fulfilment of the purchaser's obligations to inspect and report defects in accordance with § 377 HGB.
- (2) Advertising statements of third parties are only binding for us if they have been approved by the manufacturer or us.
- (3) If the purchaser fails to fully comply with our or the manufacturer's operating or maintenance instructions, or the purchaser makes changes to the products, replaces parts or uses consumables that do not correspond to the original specifications, the warranty shall be void if the purchaser does not refute a substantiated claim that at least one of these circumstances has caused the defect.
- (4) Moreover, our warranty terms and conditions shall apply.

§ 10 Subsequent performance

- (1) If the item is defective, the purchaser shall initially only have the right to demand subsequent performance from us, provided that the subsequent performance is not unreasonable for us or we have seriously and finally refused it.
- (2) Subsequent performance may consist of a new delivery of the item or rectification (repair) by us or a third party engaged by us. In each case, we shall be obliged to bear all expenses necessary for the purpose of remedying the defect, in particular transport, travel, labour and material costs, insofar as these have not been increased by the fact that the object of purchase has been brought to a place other than the place of performance. In case of a new delivery, the purchaser must bear the costs for a dismantling and installation of the purchased item if the purchaser is a commercial entity.
- (3) We shall be entitled to choose between the various types of subsequent performance at our reasonable discretion (§ 315 BGB). In any case, we shall be entitled to refuse a type of subsequent performance selected by the purchaser if the other type of subsequent performance results in 15% lower costs for us. The remaining residual value of the item returned in the case of a new delivery shall be credited against this.

- (4) We shall be entitled to provide the subsequent performance dependent on an appropriate share of the purchase price having been paid. We shall also be entitled to refuse subsequent performance if the costs thereof exceed the stipulated purchase price. If we are at fault for the defect, or if we have officially guaranteed the absence of the defect, we can only refuse subsequent performance if its costs exceed the stipulated purchase price by one third. The remaining residual value of the item returned in the case of a new delivery shall be credited against this.
- (5) Any subsequent performance by us shall be conducted without recognition of a legal obligation, unless we have expressly acknowledged the defect. Our technicians or fitters are not authorised to acknowledge a defect.
- (6) If a concrete object is the subject matter of this contract, we are entitled to repair it, if a repair by us or a third party engaged by us is possible. We shall also be entitled to subsequently deliver an item other than the stipulated item if it is just as suitable for the purchaser's contractual purposes as the stipulated item. If used goods are the subject matter of this contract, the purchaser (if it is a commercial entity) shall be obliged to inspect them immediately for visible defects. If the purchaser does not report such defects within three weeks of handover, the purchaser shall not be entitled to assert any rights based on identifiable defects, if the purchaser does not prove that the defect already existed at the time of handover.

§ 11 Additional rights in case of defects

- (1) If the subsequent performance pursuant to § 440 BGB has failed, the purchaser may assert the rights from § 437 No. 2 BGB (rescission or reduction) or § 437 No. 3 BGB (compensation for damages or reimbursement of expenses) at its discretion and in compliance with the provisions of §§ 10, 11, 12 and 13 of these General Terms and Conditions of Sale.
- (2) The purchaser is not entitled to claim damages in accordance with § 280 Para. 1 BGB in the case of insignificant defects of the goods. The right to a reduction of the purchase price is also excluded in the case of minor defects.

§ 12 Statute of limitation for claims arising from defects

- (1) The purchaser's claims arising from defects of the item shall lapse after five years upon delivery of the item. This shall also apply to the purchaser's rights to compensation for damages or damages in lieu of performance, including those for all damages to other legal assets of the purchaser which have arisen through the defect, unless this concerns damage to the purchaser's life, body or health, or unless we are responsible for the defect due to willful intent or gross negligence.
- (2) If the subject matter of this contract also includes rights, the limitation period for the purchaser's claims arising from defects shall commence with the agreement of the contracting parties on the transfer of these rights to the purchaser.

§ 13 Cancellation and compensation for damages instead of performance due to a breach of duty

- (1) A period of time set by the purchaser for subsequent performance must be at least 14 days, unless the subsequent performance must be provided within a shorter period of time for special reasons.
- (2) Even after the unsuccessful expiry of a reasonable grace period, the purchaser shall only have the right to withdraw from the contract or to demand compensation for damages instead of performance if it has announced this beforehand when setting the grace period or any other reasonable period of time.
- (3) If the purchaser sets multiple deadlines for subsequent performance, the purchaser shall not be entitled to withdraw from the contract or demand compensation for damages in lieu of performance during the respective time period.

§ 14 Returns

- (1) Returns and/or exchange of defect-free goods is only possible if we have expressly agreed to this. There is no legal obligation to take back the goods. Return deliveries and return shipments intended for exchange must be delivered to our registered office as quickly as possible at the expense of the purchaser, including any advance freight charges paid by us, and the delivery note or invoice number must be specified. The purchaser shall bear the risk for this until the goods are accepted. We are entitled to charge administrative fees or to refuse the return. The minimum processing fee for returns is EUR 75.00 net. If special expenses are necessary in order to identify the returned goods or restore them to perfect condition (repairs, cleaning, etc.), we are entitled to charge any arising costs to the purchaser.
- (2) The purchaser is obliged to give us advance notice of any returns. If the purchaser violates this obligation, it shall be liable for any damage resulting from this. We reserve the right to return unreported return deliveries unprocessed and at the purchaser's expense, or even refuse acceptance of such deliveries. Returns must be reported in writing or in text form in accordance with § 126b BGB (in particular by fax or email) and confirmed in writing by DOYMA – returns that are not reported first will either be returned to the sender (carriage to be paid by you) or will be subject to an administrative fee of EUR 25 (in addition to the incurred costs of the return itself).

§ 15 Liability

- (1) We shall not be liable for slightly negligent breaches of duty, insofar as these do not concern essential contractual obligations, or if we have assumed a guarantee for the fulfilment of this obligation or for the success which did not occur due to the breach of duty. This also applies to corresponding actions of our subsidiaries and vicarious agents.
- (2) This exclusion of liability shall not apply if the damage consists of injury to life, limb or health or if claims arising from the German Product Liability Act or claims arising from data protection regulations (in particular the EU General Data Protection Regulation, the German Federal Data Protection Act) are affected.
- (3) We have business liability and product liability insurance. Insofar as this occurs, the exclusion of liability in accordance with Section 1 of this paragraph does not apply with the provision that the claim for damages is not limited to a maximum total of EUR 1,500,000 in each individual case.
- (4) Any claims for damages on the part of the purchaser arising from a grossly negligent breach of duty or from a grossly negligent act on our part shall be limited to the damage foreseeable for us.
- (5) The Sections 1 to 4 of this paragraph shall apply mutatis mutandis to offences committed by our employees and vicarious agents.

§ 16 Retention of title

- (1) We reserve title to the purchased item until all payments arising from the delivery contract have been received. In the event of a breach of contract on the part of the purchaser, in particular in the event of a delay in payment, we shall be entitled to seize the object of purchase after the unsuccessful expiry of a grace period (if this is not dispensable under the applicable law). The readjusting of possession regarding the object of sale by us shall constitute a withdrawal from the contract. After taking back the object of sale, we shall be entitled to sell the object of sale at our discretion. The proceeds from the sale shall be offset against the purchaser's liabilities – less the reasonable sales costs.
- (2) The purchaser shall be obliged to treat the object of sale with care. In particular, it shall be obliged to insure the object of sale at its own expense against fire, water damage and theft to a sufficient extent of the replacement value. Insofar as maintenance and inspection work is required, the purchaser must carry this out in good time and at its own expense.
- (3) In the event of seizures or interventions by third parties, the purchaser must inform us immediately in writing or text form so that we can take legal action in accordance with § 771 of the German Civil Code (ZPO). Insofar as the third party is not in a position to reimburse us for the judicial and extra-judicial costs of a lawsuit in accordance with § 771 ZPO, the purchaser shall be liable for the loss incurred by us.
- (4) The purchaser shall be entitled to resell the object of sale in the ordinary course of business; however, it shall immediately assign all claims to us in the amount of the final invoice amount (including VAT) of our claim occurring for it from the resale against its purchasers or third parties, irrespective of whether the object of sale has been resold without or after processing. The purchaser shall remain authorised to collect this claim even after the assignment. Our authority to collect the claim ourselves remains unaffected by this. However, we undertake not to collect the claim as long as the purchaser fulfils its payment obligations from the collected proceeds, is not late with payments and, in particular, as long as no petition for the opening of settlement or insolvency proceedings has been filed, or payments have been suspended. If this is the case, however, we shall be entitled to demand that the purchaser notifies us of the assigned claims and the respective debtors, provides us with all information necessary for collection, hands over the associated documents and notifies the debtors (third parties) of the assignment.
- (5) The processing or transformation of the object of sale by the purchaser shall always be carried out on our behalf. If the object of sale is processed with other objects not belonging to us, we shall acquire co-ownership of the new object in the ratio of the value of the object of sale (final invoice amount, including VAT) to the other processed objects at the time of processing. In all other respects, the same shall apply to the item created by processing as to the object of sale delivered under reservation of title.
- (6) If the object of sale is inseparably combined with other objects not belonging to us, we shall acquire co-ownership of the new object in proportion to the value of the object of sale (final invoice amount, including VAT) to the other combined objects at the time of combination. If the combination is carried out in such a way that the purchaser's item is to be regarded as the main item, it shall be deemed to have been agreed that the purchaser shall transfer co-ownership to us for the respective share. The purchaser shall keep the sole ownership or co-ownership thus created in safe custody for us.
- (7) The purchaser shall also assign to us the claims to secure our claims against it, which arise against a third party as a result of the combination of the purchased item with real estate.
- (8) We shall be committed to release the securities to which we are entitled at the purchaser's request insofar as the realisable value of our securities exceeds the claims to be secured by more than 10%. The selection of the securities to be released shall be at our discretion.




§ 17 Place of jurisdiction – place of performance – data protection

- (1) If the purchaser is a merchant, our place of business shall be the place of jurisdiction. However, we shall also be entitled to sue the purchaser at its residential or business domicile court.
- (2) In the case of cross-border deliveries, the exclusive place of jurisdiction for all disputes arising directly or indirectly from the contractual relationship shall be Oytan, Federal Republic of Germany, insofar as the purchaser is a merchant within the meaning of the German Commercial Code. However, we are also entitled to sue the purchaser at any other court which is competent under the Brussels Regime, or under other legal provisions and international conventions.
- (3) If the purchaser is a consumer, the statutory place of jurisdiction shall apply. However, the court of our place of business shall also have additional jurisdiction if the consumer has an unclear place of residence, or has moved abroad after the conclusion of the contract.
- (4) Unless otherwise specified in the order confirmation, our place of business is the place of performance.
- (5) For all legal relationships between us and the purchaser under this contract, only the law governing the legal relationships of domestic parties at our registered office (German law) shall apply, under exclusion of any foreign law. The validity of the UN Convention on Contracts for the International Sale of Goods (CISG) is excluded.
- (6) Please note our data protection statement, which we have provided for you on our website <https://www.doyma.com/privacy-policy> under "Privacy policy".

Oytan, last updated January 2026


WE WILL BE HAPPY TO ADVISE !


GERMANY


DOYMA GmbH & Co
 **SEALING SYSTEMS**
 **FIRE CONTROL SYSTEMS**
 **HEAT PUMP DUCT SYSTEMS**


Industriestr. 43-57
28876 Oyten


Fon: +49 (0) 4207/91 66-0
Fax: +49 (0) 4207/91 66-199
info@doyma.de
www.doyma.de

 **CONTACT PERSON TEAM VG 1:**
+49 (0) 4207 / 91 66 - 610
anfrage-vg1@doyma.de




 **CONTACT PERSON TEAM VG 2:**
+49 (0) 4207 / 91 66 - 620
anfrage-vg2@doyma.de

 **CONTACT PERSON VG 3:**
+49 (0) 4207 / 91 66 - 630
anfrage-vg3@doyma.de

 **CONTACT PERSON FOR CONTRACT MATTERS AND ORDERS:**
+49 (0) 4207 / 91 66 - 500
bestellung@doyma.de


 **CONTACT PERSON FOR EXPORT:**
+49 (0) 4207 / 91 66 - 550
export@doyma.de

AUSTRIA

DOYMA GmbH & Co
 **SEALING SYSTEMS**
 **FIRE CONTROL SYSTEMS**
 **HEAT PUMP DUCT SYSTEMS**

Perfektastr. 61 Objekt 3/Top 2
1230 Wien

Fon: +43 (0) 1 / 698 1388
Fax: +43 (0) 1 / 698 1388 - 99
info@doyma.at
www.doyma.at




Each of our three sales territories is supported by a competent, highly motivated team.

Do you need support or have any questions about our product ranges?

Then contact us.



YOU CAN FIND ALL CONTACT PERSONS FOR THE INDIVIDUAL TEAMS AT:

<https://www.doyma.com/company/contact-persons>

MEMBERSHIPS:

