


# Curaflex® 6.6002

 PRESSING WATER

- Flange plate with sleeve for duct systems
- Use **in front of the wall/ on the ceiling**
- For use with **tanking membranes or thick coating (black tank)**
- With **fixed and loose flange and additional bonding/ mounting flange**
- **Ideal for insulated structures**



PIPE SLEEVES

**25**  
Years  
Guarantee

## PRODUCT ADVANTAGES

- Specially manufactured steel pipe sleeve with integrated fixed and loose flange (loose flange split) and additional bonding/mounting flange
- Design allows for easy incorporation of insulation
- Can be manufactured individually for planned insulation thickness
- Integration of an additional sealing level possible
- Optimally designed inner wall for holding the DOYMA sealing systems and building services duct system

## TECHNICAL DETAILS

- With fixed and loose flanges and bonding flange in accordance with DIN 18533
- Gas and watertight
- Radon proof – according to FHRK information sheet MB101
- Depending on the tanking membrane, installed with Curaflex® packings (1775) arranged on both sides where there is thin and hard film, or accessories where there is a thick coating (1776): Sanding of the contact surfaces of the fixed and loose flange

## MATERIAL

- Steel, GGV triple corrosion protection coating; optionally made of stainless steel 1.4301 (V2A) or 1.4571 / 1.4404 (V4A)



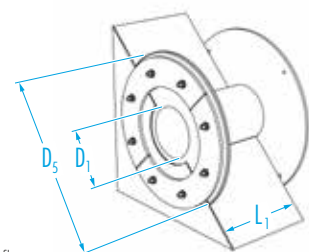
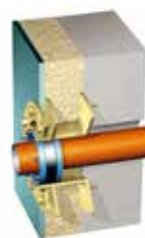
### ACCESSORIES (OPTIONAL)\*

- Curaflex® packings (1775) for thin, hard films
- Accessories for thick coating
- Punch for thick coating

\* see accessories section

Inner diameter of pipe sleeve D <sub>1</sub> [DN in mm]	Outer diameter of fixed flange D <sub>5</sub> max. [mm]	L <sub>1</sub> [mm]
80	440	<i>as per specifications</i>
100	460	
125	480	
150	510	
200	560	
250	610	
300	660	
350	710	
400	760	
450	810	
500	860	
600	960	
700	1060	

Further material combinations and dimensions available upon request.



Variant: Curaflex® 6.6002 and Curaflex Nova® Uno for use in front of thermal insulated wall