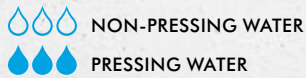
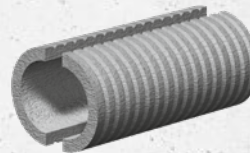
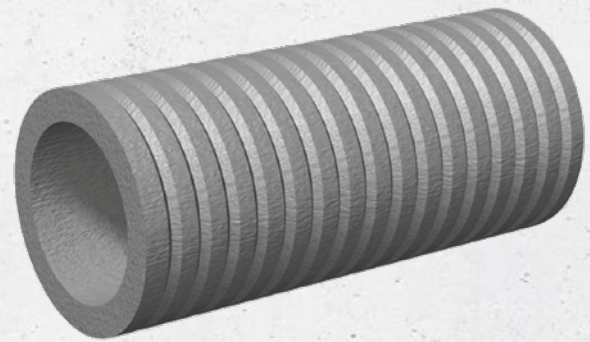


# Curaflex® 3000



- Cut-out for duct systems
- Use in **unfinished structures**
- For **waterproof concrete structures (white tank)**



Variant: Curaflex® 3000/T pipe sleeve – properties as described above, but split lengthwise. For installation with an existing duct in the wall.



## PRODUCT ADVANTAGES

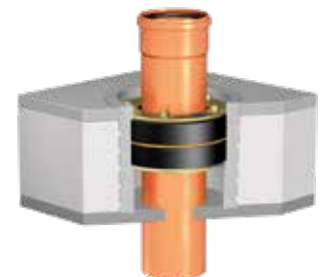
- Homogeneous connection to the concrete, reinforced by the special grooving
- Coefficient of expansion of the material corresponds to that of concrete
- Optimally designed inner wall for holding the DOYMA sealing systems and building services duct system
- For a white tank (waterproof concrete structures without tanking membranes/thick coatings)

## TECHNICAL DETAILS

- Gas-tight against ground gas with membrane that comes into contact with the soil
- Radon proof – according to FHRK information sheet MB101
- Certified under FHRK test regulation GE 102 (no. G 30 322-2-9)

## MATERIAL

- Special fibre cement



Variant: Curaflex® 3000 and Curaflex® C as bottom feed-through



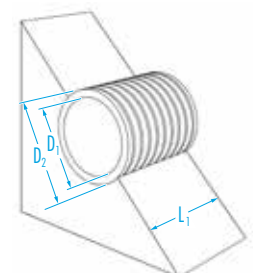
### ACCESSORIES – ABSOLUTELY NECESSARY!\*

- Concrete adhesive (1740) for Curaflex® 3000/T pipe sleeve (split pipe sleeve)

### ACCESSORIES (OPTIONAL)\*

- Formwork fastener (1701)
- Sealing plugs (1702)

\* see accessories section



## Curaflex® 3000

| Inner diameter of pipe sleeve<br>D <sub>1</sub><br>[DN in mm] | Outer diameter of pipe sleeve<br>D <sub>2</sub><br>[DN in mm] | Length [mm] | Article number     |
|---|---|-------------|--------------------|
| 80  | ≤ 140   | 200         | 1 30 0 080 200 0 0 |
|   |   | 240         | 1 30 0 080 240 0 0 |
|   |   | 250         | 1 30 0 080 250 0 0 |
|   |   | 300         | 1 30 0 080 300 0 0 |
|   |   | 350         | 1 30 0 080 350 0 0 |
|   |   | 365         | 1 30 0 080 365 0 0 |
|   |   | 400         | 1 30 0 080 400 0 0 |
|   |   | 500         | 1 30 0 080 500 0 0 |
| 100   | ≤ 160   | 1000        | 1 30 0 080 999 0 0 |
|   |   | 200         | 1 30 0 100 200 0 0 |
|   |   | 240         | 1 30 0 100 240 0 0 |
|   |   | 250         | 1 30 0 100 250 0 0 |
|   |   | 300         | 1 30 0 100 300 0 0 |
|   |   | 350         | 1 30 0 100 350 0 0 |
|   |   | 365         | 1 30 0 100 365 0 0 |
|   |   | 400         | 1 30 0 100 400 0 0 |
| 125   | ≤ 165   | 500         | 1 30 0 100 500 0 0 |
|   |   | 1000        | 1 30 0 100 999 0 0 |
|   |   | 200         | 1 30 0 125 200 0 0 |
|   |   | 240         | 1 30 0 125 240 0 0 |
|   |   | 250         | 1 30 0 125 250 0 0 |
|   |   | 300         | 1 30 0 125 300 0 0 |
|   |   | 350         | 1 30 0 125 350 0 0 |
|   |   | 365         | 1 30 0 125 365 0 0 |
| 150   | ≤ 190   | 400         | 1 30 0 125 400 0 0 |
|   |   | 500         | 1 30 0 125 500 0 0 |
|   |   | 1000        | 1 30 0 125 999 0 0 |
|   |   | 200         | 1 30 0 150 200 0 0 |
|   |   | 240         | 1 30 0 150 240 0 0 |
|   |   | 250         | 1 30 0 150 250 0 0 |
|   |   | 300         | 1 30 0 150 300 0 0 |
|   |   | 350         | 1 30 0 150 350 0 0 |
| 200   | ≤ 245   | 365         | 1 30 0 150 365 0 0 |
|   |   | 400         | 1 30 0 150 400 0 0 |
|   |   | 500         | 1 30 0 150 500 0 0 |
|   |   | 1000        | 1 30 0 150 999 0 0 |
|   |   | 200         | 1 30 0 200 200 0 0 |
|   |   | 240         | 1 30 0 200 240 0 0 |
|   |   | 250         | 1 30 0 200 250 0 0 |
|   |   | 300         | 1 30 0 200 300 0 0 |
| 250   | ≤ 300   | 350         | 1 30 0 200 350 0 0 |
|   |   | 365         | 1 30 0 200 365 0 0 |
|   |   | 400         | 1 30 0 200 400 0 0 |
|   |   | 500         | 1 30 0 200 500 0 0 |
|   |   | 1000        | 1 30 0 200 999 0 0 |
|   |   | 200         | 1 30 0 250 200 0 0 |
|   |   | 240         | 1 30 0 250 240 0 0 |
|   |   | 250         | 1 30 0 250 250 0 0 |

| Inner diameter of pipe sleeve<br>D <sub>1</sub><br>[DN in mm] | Outer diameter of pipe sleeve<br>D <sub>2</sub><br>[DN in mm] | Length [mm] | Article number     |
|---|---|-------------|--------------------|
| 300   | ≤ 350   | 200         | 1 30 0 300 200 0 0 |
|   |   | 240         | 1 30 0 300 240 0 0 |
|   |   | 250         | 1 30 0 300 250 0 0 |
|   |   | 300         | 1 30 0 300 300 0 0 |
|   |   | 350         | 1 30 0 300 350 0 0 |
|   |   | 365         | 1 30 0 300 365 0 0 |
|   |   | 400         | 1 30 0 300 400 0 0 |
|   |   | 500         | 1 30 0 300 500 0 0 |
| 350   | ≤ 400   | 1000        | 1 30 0 300 999 0 0 |
|   |   | 200         | 1 30 0 350 200 0 0 |
|   |   | 240         | 1 30 0 350 240 0 0 |
|   |   | 250         | 1 30 0 350 250 0 0 |
|   |   | 300         | 1 30 0 350 300 0 0 |
|   |   | 350         | 1 30 0 350 350 0 0 |
|   |   | 365         | 1 30 0 350 365 0 0 |
|   |   | 400         | 1 30 0 350 400 0 0 |
| 400   | ≤ 470   | 500         | 1 30 0 350 500 0 0 |
|   |   | 1000        | 1 30 0 350 999 0 0 |
|   |   | 200         | 1 30 0 400 200 0 0 |
|   |   | 240         | 1 30 0 400 240 0 0 |
|   |   | 250         | 1 30 0 400 250 0 0 |
|   |   | 300         | 1 30 0 400 300 0 0 |
|   |   | 350         | 1 30 0 400 350 0 0 |
|   |   | 365         | 1 30 0 400 365 0 0 |
| 450   | ≤ 520   | 400         | 1 30 0 400 400 0 0 |
|   |   | 500         | 1 30 0 400 500 0 0 |
|   |   | 1000        | 1 30 0 400 999 0 0 |
|   |   | 200         | 1 30 0 450 200 0 0 |
|   |   | 240         | 1 30 0 450 240 0 0 |
|   |   | 250         | 1 30 0 450 250 0 0 |
|   |   | 300         | 1 30 0 450 300 0 0 |
|   |   | 350         | 1 30 0 450 350 0 0 |
| 500   | ≤ 570   | 365         | 1 30 0 450 365 0 0 |
|   |   | 400         | 1 30 0 450 400 0 0 |
|   |   | 500         | 1 30 0 450 500 0 0 |
|   |   | 1000        | 1 30 0 450 999 0 0 |
|   |   | 200         | 1 30 0 500 200 0 0 |
|   |   | 240         | 1 30 0 500 240 0 0 |
|   |   | 250         | 1 30 0 500 250 0 0 |
|   |   | 300         | 1 30 0 500 300 0 0 |
| 600   | ≤ 680   | 350         | 1 30 0 500 350 0 0 |
|   |   | 365         | 1 30 0 500 365 0 0 |
|   |   | 400         | 1 30 0 500 400 0 0 |
|   |   | 500         | 1 30 0 500 500 0 0 |
|   |   | 1000        | 1 30 0 500 999 0 0 |
|   |   | 200         | 1 30 0 600 200 0 0 |
|   |   | 240         | 1 30 0 600 240 0 0 |
|   |   | 250         | 1 30 0 600 250 0 0 |

| Inner diameter of pipe sleeve<br>D <sub>1</sub><br>[DN in mm] | Outer diameter of pipe sleeve<br>D <sub>2</sub><br>[DN in mm] | Length [mm] | Article number     |
|---|---|-------------|--------------------|
| 700   | ≤ 800   | 200         | 1 30 0 700 200 0 0 |
|   |   | 240         | 1 30 0 700 240 0 0 |
|   |   | 250         | 1 30 0 700 250 0 0 |
|   |   | 300         | 1 30 0 700 300 0 0 |
|   |   | 350         | 1 30 0 700 350 0 0 |
|   |   | 365         | 1 30 0 700 365 0 0 |
|   |   | 400         | 1 30 0 700 400 0 0 |
|   |   | 500         | 1 30 0 700 500 0 0 |
| 800   | ≤ 910   | 1000        | 1 30 0 700 999 0 0 |
|   |   | 200         | 1 30 0 800 200 0 0 |
|   |   | 240         | 1 30 0 800 240 0 0 |
|   |   | 250         | 1 30 0 800 250 0 0 |
|   |   | 300         | 1 30 0 800 300 0 0 |
|   |   | 350         | 1 30 0 800 350 0 0 |
|   |   | 365         | 1 30 0 800 365 0 0 |
|   |   | 400         | 1 30 0 800 400 0 0 |
|   |   | 500         | 1 30 0 800 500 0 0 |
|   |   | 1000        | 1 30 0 800 999 0 0 |
|   |   | 200         | 1 30 0 800 200 0 0 |
|   |   | 240         | 1 30 0 800 240 0 0 |
|   |   | 250         | 1 30 0 800 250 0 0 |
|   |   | 300         | 1 30 0 800 300 0 0 |
|   |   | 350         | 1 30 0 800 350 0 0 |
|   |   | 365         | 1 30 0 800 365 0 0 |

### Costs for custom lengths

| DN  |
|-----|
| 80  |
| 100 |
| 125 |
| 150 |
| 200 |
| 250 |
| 300 |
| 350 |
| 400 |
| 450 |
| 500 |
| 600 |
| 700 |
| 800 |