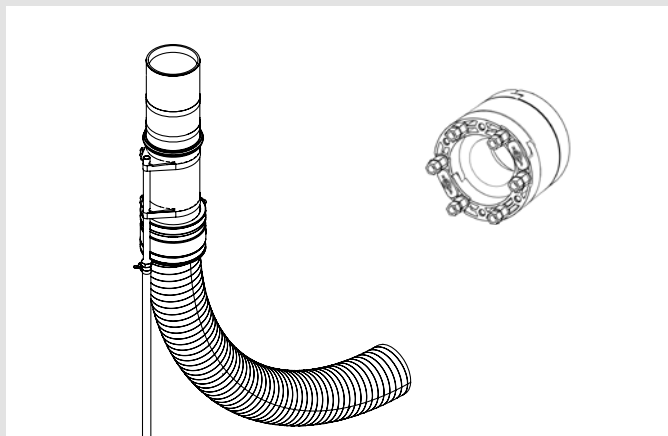


INSTALLATION NOTES

Quadro-Secura® HOUSE LEAD IN

- Quadro-Secura® E-BP-R Max
for buildings without basements



Quadro-Secura® E-BP-R Max (DN150)

General information and intended use

Single-compartment building services duct system as a round version. Use in unfinished structures to be made from waterproof concrete. Designed for larger pipe/cable dimensions (including water or electricity).

General notes



The standards and guidelines listed here are only valid in Germany.
For all other countries, the national standards and guidelines as amended must be applied.



For compliance with the wall distance, a cut-out in the strip foundation must be provided depending on the construction of the foundation and following consultation with the architect or contractor.

More accessories and information can be found at www.DOYMA.com and in the technical data sheets.

Safety instructions



Protect the Quadro-Secura® E-BP-R Max service entry point for a single detached house from damage and contamination during installation. Check the delivery for completeness and all individual parts for possible damage. Only undamaged parts may be installed.



When installing the house lead-in, the applicable accident prevention regulations, VDE rules, the applicable national health and safety regulations, and the rules and policies (operating procedures) of your company must all be observed.



Before installing the Quadro-Secura® E-BP-R Max floor slab feed-through, observe the following information

Personnel requirements

Risk of injury if not sufficiently qualified!

Improper handling may result in significant personal injury and property damage.

- Assembly may only be carried out by qualified and trained persons who have read and understood these assembly instructions.

Qualified personnel

Due to their professional training, knowledge and experience as well as knowledge of the relevant regulations, standards and regulations, qualified personnel are able to carry out the work assigned to them and identify and avoid potential hazards independently.

Storage

Damage due to improper storage!

Improper storage may result in significant material damage.

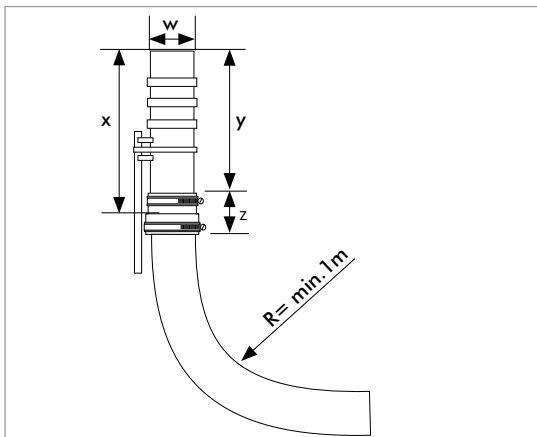
- Protect Quadro-Sicura® E-BP-R Max from damage, moisture and contamination before installation. Only undamaged parts may be installed.
- The Quadro-Sicura® E-BP-R Max must be stored so that it is not exposed to low temperatures ($<5^{\circ}\text{C}$) and higher temperatures ($>30^{\circ}\text{C}$) or direct sunlight.

Disposal

If no take-back or disposal agreement has been concluded, recycle disassembled components after proper disassembly:

- Scrap remaining metal material in accordance with the applicable environmental regulations.
- Dispose of elastomers in accordance with the applicable environmental regulations.
- Dispose of plastics in accordance with the applicable environmental regulations.
- Dispose of packaging material in accordance with applicable environmental regulations.

Quadro-Sicura® E-BP-R Max

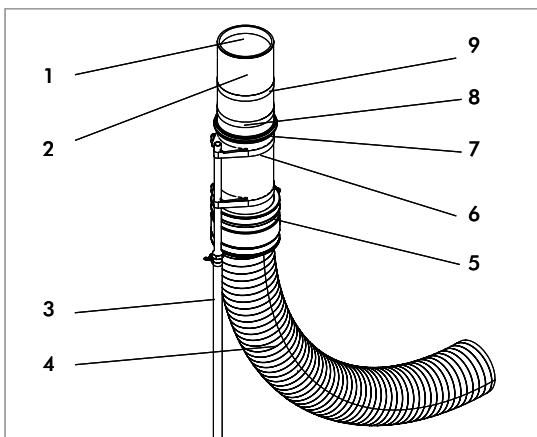


Quadro-Sicura® E-BP-R Max (DN 100)

- W = inner diameter of casing 100 mm
- X = casing length 400 mm
- Y = casing length 350 mm
- Z = collar height 130 mm

Quadro-Sicura® E-BP-R Max (DN 150)

- W = inner diameter of casing 150 mm
- X = casing length 600 mm
- Y = casing length 540 mm
- Z = collar height 140 mm



Description of Quadro-Sicura® E-BP-R Max

- 1 Protective cap
- 2 Cast-in part
- 3 Height-adjustable set-up device with ground spike
- 4 Bend-resistant jacket pipe
- 5 Collar
- 6 Strap
- 7 Water barrier flange
- 8 "OK RFB" marking, top edge of unfinished floor
- 9 Red marking "Shortenable area"

Scope of delivery

The scope of delivery of the Quadro-Secura® E-BP-R Max includes:

- 1 cast-in part including collar and protective cap
- 1 bend-resistant jacket pipe
- 1 set-up device with ground spike

Necessary accessories (not included in the scope of delivery):

- 1 gasket insert, e.g. gas or water house lead-in

The scope of delivery of the house lead-in combination includes:

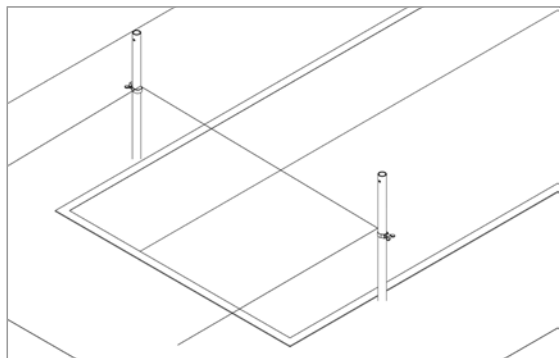
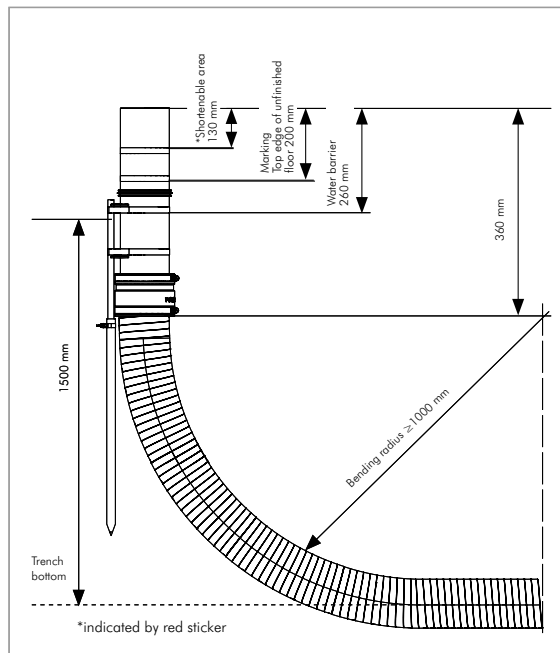
- For gas: 1 HS-SKD...DN50 or HSFLEX-SKIDFG...DN80
- For water: 1 HS-W-PE...ARO DN50 or HSFLEX-WF...DN80

Required tools and equipment

The following tools and equipment are required for the proper installation of the Quadro-Secura® E-BP-R Max service entry point for a single detached house:

- Torque spanner up to 20 Nm, 1/4 inch
- Extension 150 mm, 1/4 inch
- Hexagon socket for hexagon spanner SW 13, 1/4 inch
- Hexagon socket for hexagon spanner SW 8, 1/4 inch

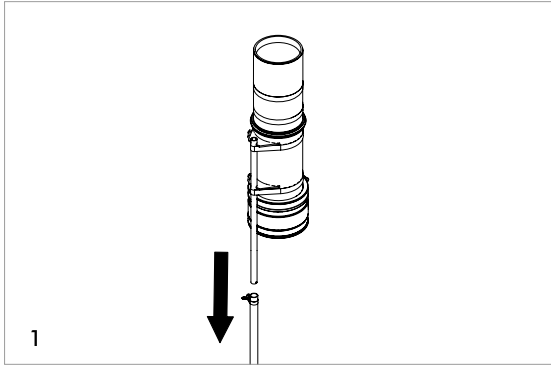
Installation situation



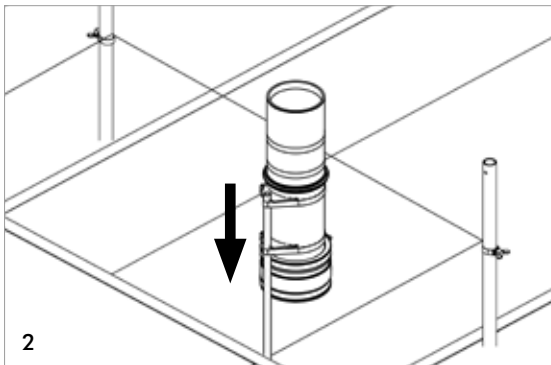
Preparation

To position the Quadro-Secura® E-BP-R Max precisely, a batter board must be prepared on site. Ideally, the line also marks the top edge of the unfinished floor as well as the inside of the wall.

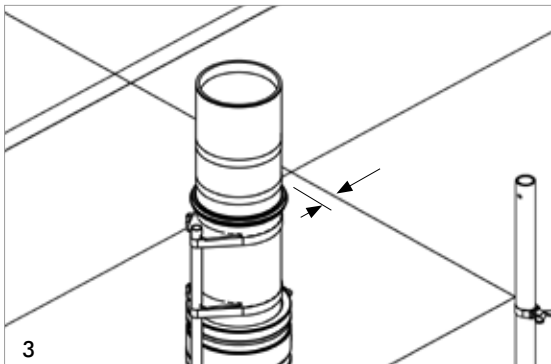
Installation steps



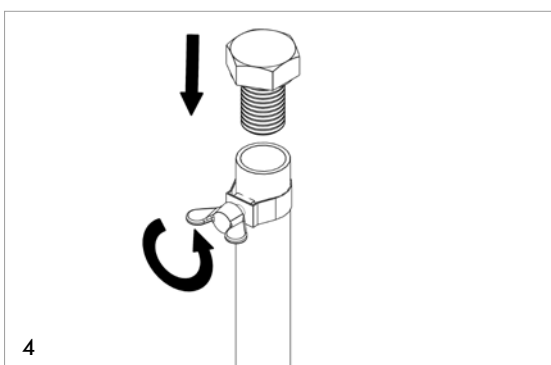
Insert the cast-in part into the set-up device and fasten in place with wing screw.



Align and position the cast-in part with the set-up device on the batter board. Align the cast-in part horizontally using a spirit level and press it into the ground. The exact height does not.

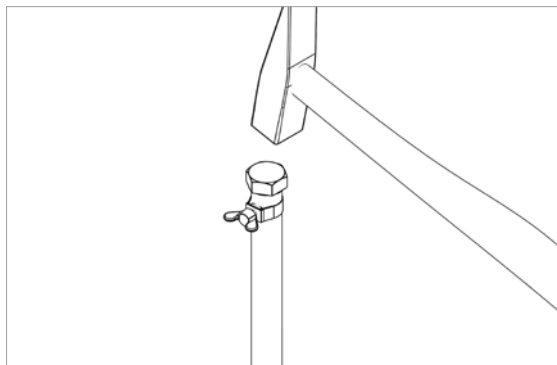


- Align Quadro-Secura® E-BP-R Max (cast-in part) with the wall.
- Distance from interior wall surface including plaster (finished wall) to exterior base surface: at least 5 cm.
- The base must not be covered by the interior walls (shell construction wall + plaster) at a later date.
- The position of the Quadro-Secura® E-BP-R Max (cast-in part) must always be agreed with the suppliers!
- During the filling process, check the distance to the batter board and the vertical position of the part and adjust if necessary.

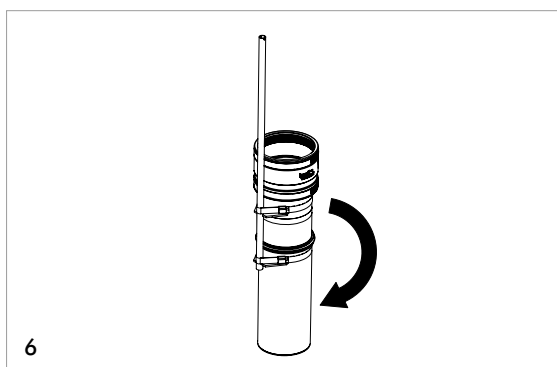


Then loosen the wing screw, hold the ground spike and pull off Quadro-Secura® E-BP-R Max (cast-in part).

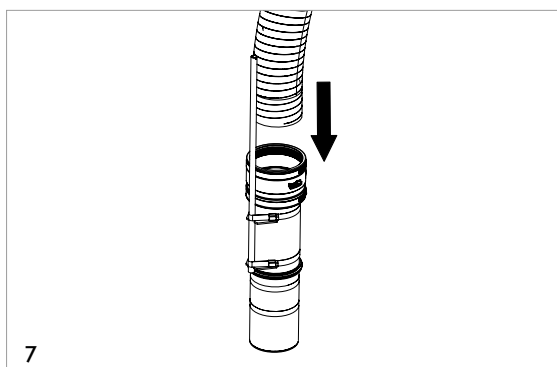
Insert the supplied impact screw in the ground spike and fix it in place with the wing screw.



Beat the ground spike **approx. 300 mm** into the ground or until it is sufficiently fixed in place. Remove the impact screw.



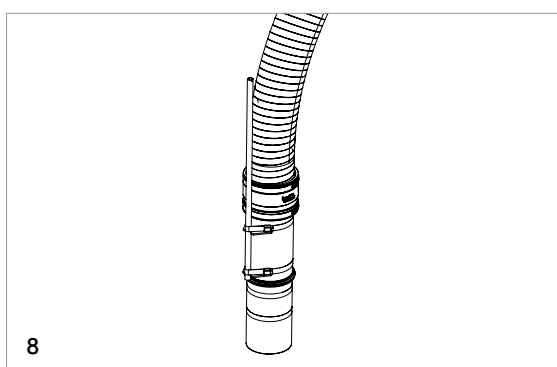
Place the cast-in part upside down on the floor.



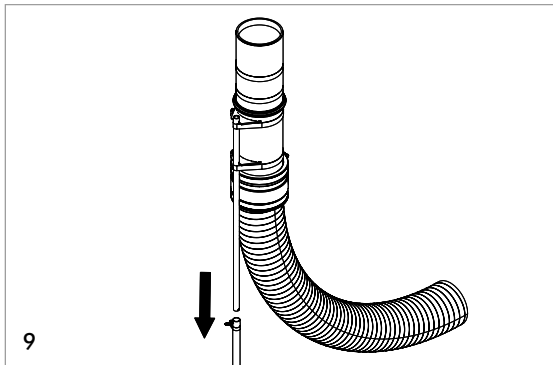
Insert the bend-resistant jacket pipe into the collar as far as it will go and tighten the hose clips with the appropriate tightening torque (see table 1).

Type	max. tightening torque spiral tube side	max. tightening torque for pipe socket/cast-in part
Quadro-Secura® E-BP-R Max 100	(SW13) 5 Nm	(SW13) 10 Nm
Quadro-Secura® E-BP-R Max 150	(SW13) 10 Nm	(SW13) 10 Nm

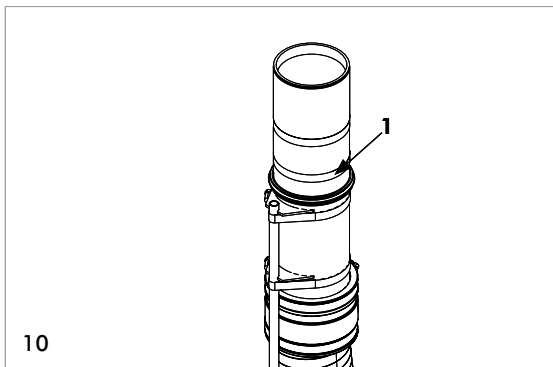
Table 1



Cast-in part with bend-resistant jacket pipe.

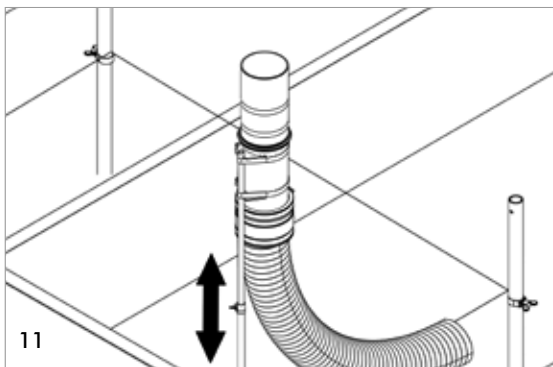


Turn the cast-in part with rigid jacket pipe around and insert it onto the ground spike that has already been driven in



On the floor slab feed-through there is a sign/markung "Top edge of unfinished floor".

"Top edge of unfinished floor" sticker

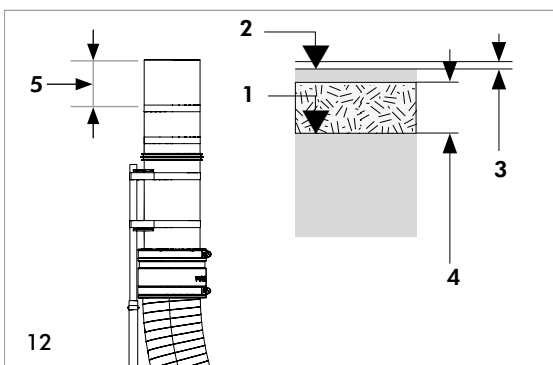


Align the floor slab feed-through with the marking "Upper edge of the unfinished floor" (see sticker on the unfinished part) at the height of the batter board (unfinished floor level).

After adjusting the height, secure the wing screw, thus securing the alignment.



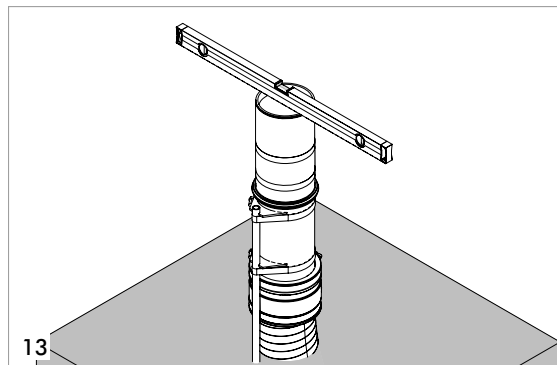
The set-up device supplied is only a temporary fixture. Only the intermediate filling of sand to the level of the granular sub-base provides a stable-surface positioning of the floor slab feed-through.



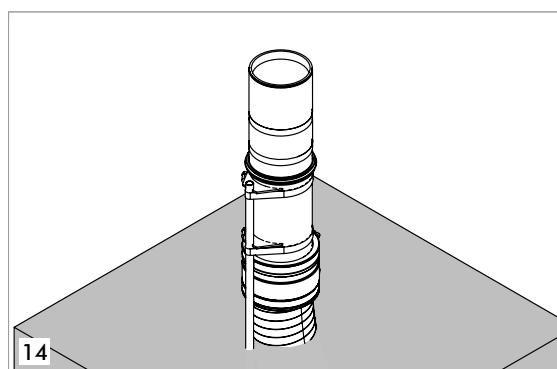
Legend for Fig.: 12

- 1 Top edge Unfinished floor
- 2 Top edge Finished floor
- 3 Projection max. 50 mm
- 4 Insulation
- 5 Shortenable area

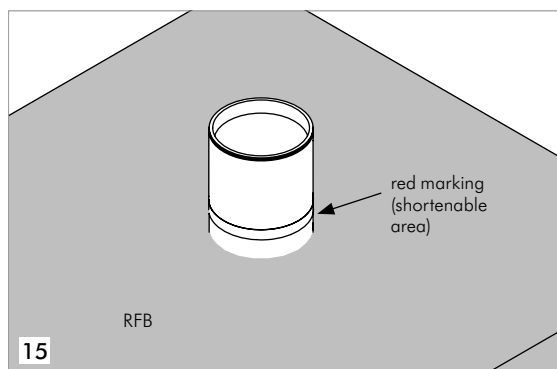
The finished floor level (FFB) lie within the shortenable area (important for super-structures > 200 mm and < 80 mm). The top edge of the finished floor must always be above the red marking.



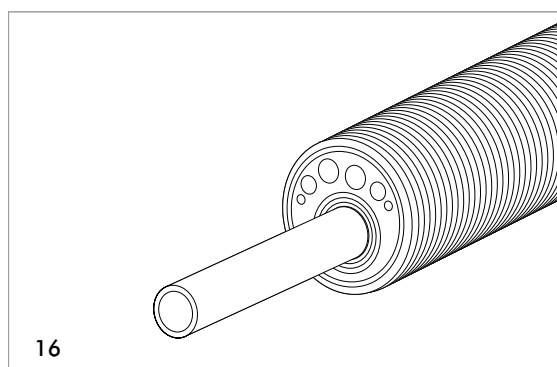
After the height of the floor slab feed-through has been fixed and during filling with sand, a spirit level can be used for positional alignment. If necessary, check the distance from the wall again (see Fig.: 3).



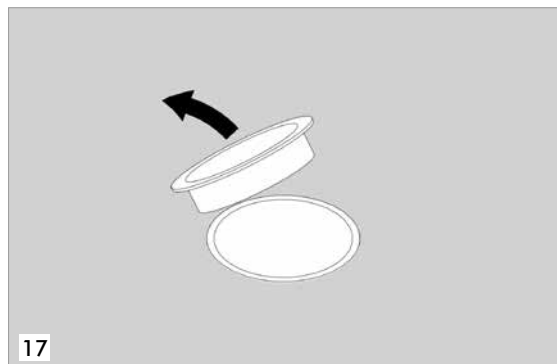
Positional and stable floor slab feed-through mounted vertically, aligned with the batter board, filled with sand and prepared for concreting



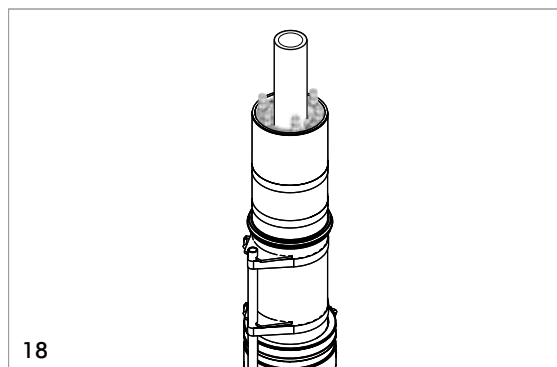
If correctly positioned, the cast-in part is **200 mm** above the unfinished floor (RFB) after concreting. A shortening of the base on the later floor construction or the finished floor level (later due to the system) by up to **130 mm** is possible.



Installation of the end plug is described in separate installation instructions.



The installation of the internal sealing (Curaflex Nova® Multi/Uno) is described in separate installation instructions.



The flush-mounted Curaflex Nova® Multi/Uno.

DOYMA products are continuously being further developed. Technical changes will be performed without prior notice.
25 year warranty on all DOYMA products. **More information at www.doyma.de**

DOYMA GmbH & Co

SEALING SYSTEMS
FIRE PROTECTION SYSTEMS

Industriestr. 43-57
28876 Oyten

Phone: 0 42 07/91 66-300
Fax: 0 42 07/91 66-199

www.doyma.de
info@doyma.de