

INSTALLATION NOTES

HKD wall collar



HKD wall collar

Dear Customer,

Thank you for choosing a quality product from our range.

Please read this message and the included installation instructions in full before installing or processing our products and keep both in a safe place after installation.

Safety instructions:

- Our products may only be installed by persons with the necessary specialist knowledge.
- For your own protection and the protection of third parties, the work area and any necessary pipe trenches must be properly constructed and secured in accordance with the applicable regulations.
- When installing our sealing and fire protection systems, the recognised rules of technology, the relevant regulations of the employers' liability insurance associations, the VDE regulations and the applicable safety and accident regulations must be observed. Parts of the body may be crushed or other serious injuries may occur when tensioning or fixing the products in place.
- The safety data sheets must be observed.
- Check that the delivered product is complete (the scope of delivery is listed separately in the installation instructions) and check all individual parts for any damage. Only undamaged parts may be installed.
- Check that the product is suitable for its intended use using the installation instructions. If there are any particular demands,

please clarify the use of the product with us in advance. Request our checklists for this purpose or download them from www.doyma.com.

Any liability on our part is excluded for misuse!

- Finally, please observe the instructions for the tools and equipment required for installation.

Industrial property rights:

- Our industrial property rights and those of third parties must be observed.

Disposal:

- Please observe the applicable regulations when disposing of components, accessories and packaging.

Terms and conditions of sale:

- The current version of our terms and conditions of sale and delivery shall prevail.

Please note:

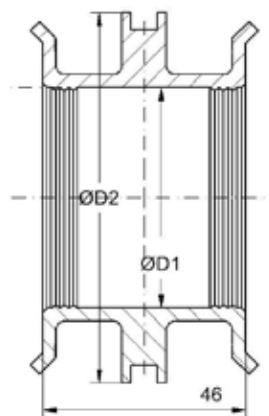
- Wall collars are sealing elements and do not serve as support bearings or fixed points for the duct.
- Check the matching assignment of the pipe and wall collar according to the table.
- To ensure secure sealing, the pipe must have a clean and smooth surface. Existing dirt should be removed with a cloth, deep grooves should be smoothed with a suitable tool.
- The usability on pipes with corrugated surface has to be checked and must be ensured by the user.

Assembly

- Slide the wall collar onto the pipe to be set in concrete and position it in the middle of the concrete (at least 5 cm concrete cover recommended). Shift the wall collar with the force applied as evenly as possible all around.
- The circumferential distance to the reinforcement, to the joint metal sheet or to other wall collar must be 5cm at least.
- The distance to component edges or other component parts must be 15 cm at least.
- The distance to building joints must be 30cm at least.
- Tighten the two pre-assembled tension straps with a screwdriver or socket wrench until the wall collar fits tightly to the pipe. There, a deformation / constriction of the pipe should be avoided.
- Finally, make sure the wall collar and tension straps fit properly.
- When setting in concrete, please pay attention, to consolidate in the area of the wall collar. Cavities must be avoided.

Dimension

Pipe Ø DN	Media pipe area Ø	Ø D1	Ø D2
110	108-121	108	142
125	123-140	123	157
160	158-170	158	192
200	198-212	198	232
250	248-260	248	282



Doyma products are always subject to further development. Technical modifications are made without prior notice. DOYMA allows a 25 years guarantee. **For more information see www.doyma.com**

DOYMA GmbH & Co

SEALING SYSTEMS

FIRE PROTECTION SYSTEMS

Industriestr. 43-57
28876 Oyten

Phone: + 49 (0) 42 07/91 66-300
Fax: + 49 (0) 42 07/91 66-199

www.doyma.de
info@doyma.de