

Curaflex® 5.5002

NON-PRESSING WATER

- Flange plate with sleeve for duct systems
- Use **in front of the wall / on the ceiling**
- For use with **tanking membranes or thick coating (black tank)**
- With **fixed and loose flange** and additional bonding/ mounting flange
- Ideal for **insulated structures**



25 years guarantee



PIPE SLEEVES

PRODUCT ADVANTAGES

- Specially manufactured steel pipe sleeve with integrated fixed and loose flange (loose flange split) and additional bonding/mounting flange
- Design allows for easy incorporation of insulation
- Can be manufactured individually for planned insulation thickness
- Integration of an additional sealing level possible
- Optimally designed inner wall for holding the Curaflex® gasket insert

TECHNICAL DETAILS

- With fixed and loose flanges and bonding flange in accordance with DIN 18533
- Gas and watertight
- Radon proof – according to FHRK information sheet MB101
- Depending on the tanking membrane, installed with Curaflex® packings (1775) arranged on both sides where there is thin and hard film, or accessories where there is a thick coating (1776): Sanding of the contact surfaces of the fixed and loose flange

MATERIAL

- GGV triple corrosion protection coating; optionally made of stainless steel 1.4301 (V2A) or 1.4571 / 1.4404 (V4A)
- Contact surfaces sanded where a thick coating is yet to be applied
- Delivery includes fixing material for solid walls



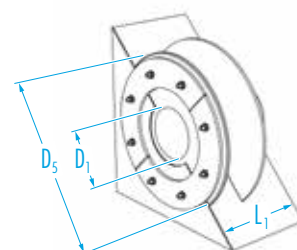
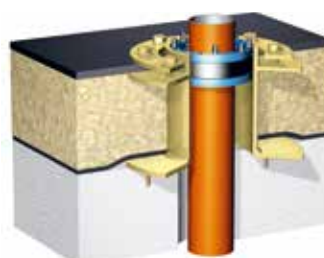
ACCESSORIES (OPTIONAL)*

- Curaflex® packings (1775) for thin, hard films
- Accessories for thick coating
- Punch for thick coating

* see accessories section

Inner diameter of pipe sleeve D ₁ [DN in mm]	Outer diameter of fixed flange D ₃ max. [mm]	Standard lengths L ₁ [mm]
80	260	
100	280	
125	300	
150	330	
200	380	200
250	430	240
300	480	250
350	530	300
400	580	350
450	630	365
500	680	400
600	780	
700	880	

Further material combinations and dimensions available upon request.



Variant: Curaflex® 5.5002 and Curaflex Nova® Uno for insulated roofs