

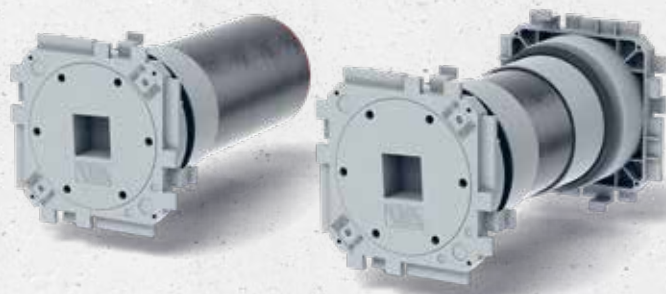
UGA BKD 90 flange sleeve

Including plug caps that are leak-tight against pressing water



PRESSING WATER

- Use in unfinished structures to be made from waterproof concrete (white tank)
- With bayonet closure



PRODUCT ADVANTAGES

- Quick, easy installation
- Leak-tight against gas and pressing water immediately after installation due to plug cap
- Permanently reliable sealing
- Versatile variants and connection options thanks to precisely fitting system caps and inserts
- Assembling in batteries possible thanks to easy combination of flange sleeves
- No reworking required
- Special design for twin/element walls

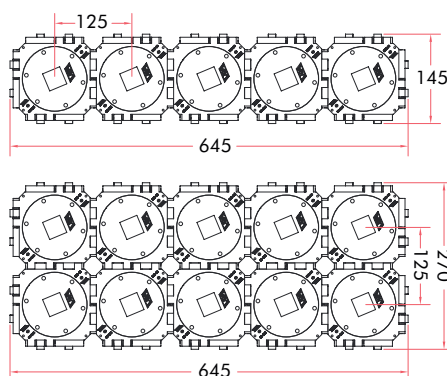
TECHNICAL DETAILS

- Single flange sleeve can be used for 60–500 mm wall thickness
- Double flange sleeve can be used for 100–500 mm wall thickness
- Design for wall thicknesses over 500 mm possible

PRODUCT SCOPE

- Flange sleeve for holding system plug cap with protective film, leak-tight against pressing water
- The flange sleeve has a sealing system. This ensures an absolute leak-tight connection to the concrete

ASSEMBLING IN BATTERIES



Angular flange sleeve

Suitable for cables laid at an angle of 30°, 45° or 60° coming from any direction. With auxiliary frame and polystyrene wedge. Single or double flange sleeve available. Minimum wall thickness is 200 mm.



The UGA range is excluded from the DOYMA 25-year warranty.



Product		Article number
BKD90-K/150	Single flange sleeve for wall thicknesses up to 500 mm	4 01 1 090 150 0 4
BKD90-K/200		4 01 1 090 200 0 4
BKD90-K/250		4 01 1 090 250 0 4
BKD90-K/300		4 01 1 090 300 0 4
BKD90-K/400		4 01 1 090 400 0 4
BKD90-K/500		4 01 1 090 500 0 4
BKD90-K2/150	Double flange sleeve for wall thicknesses up to 500 mm	4 02 1 090 150 0 4
BKD90-K2/200		4 02 1 090 200 0 4
BKD90-K2/250		4 02 1 090 250 0 4
BKD90-K2/300		4 02 1 090 300 0 4
BKD90-K2/400		4 02 1 090 400 0 4
BKD90-K2/500		4 02 1 090 500 0 4
BKD90-K2-EW/150	Double flange sleeve for twin/element walls with thicknesses up to 500 mm	—
BKD90-K2-EW/200		—
BKD90-K2-EW/250		—
BKD90-K2-EW/300		—
BKD90-K2-EW/400		—
BKD90-K2-EW/500		—