


DOYMAfix® Connect HP/B

 PRESSING WATER

- Connection system for exterior building walls that come into contact with soil
- Installation in pre-installed pipe sleeve or core bore in waterproof concrete (white tank)
- For air-water heat pumps (monoblock)
- Complete package for installation and commissioning
- Stainless steel corrugated pipe for high flexibility during installation



25
years
guarantee



PRODUCT BENEFITS

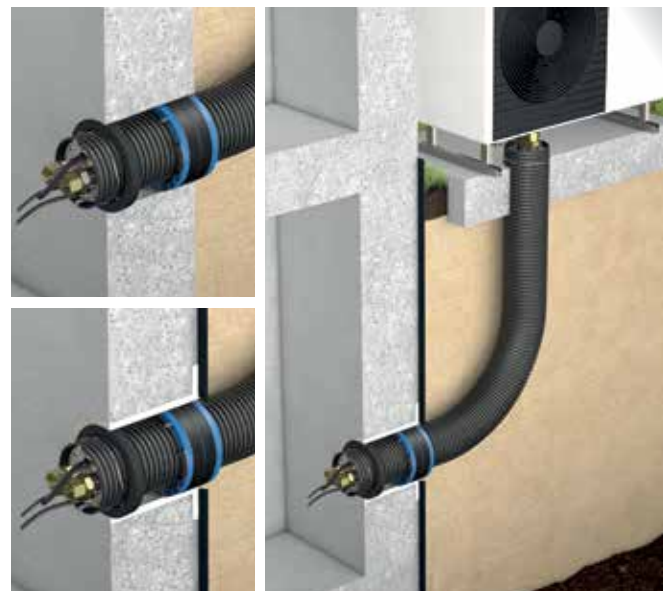
- Can be used in both new and existing buildings
- Complete package contains all required assemblies and components for connection and sealing
- Ready to connect immediately; all common adapter nipples included
- Stainless steel corrugated pipe offers high flexibility for connection (yields without pushing back)
- Flexible creation of bends without fittings
- Quick and easy installation without special tools
- One-person installation
- All media lines protected by flexible jacket pipe DN200
- Separate routing of pipes and cables
- Power and control cables routed separately
- Required cables (mains/control lines) can be pulled through quickly and easily
- Low bending radius of 0.5 m
- Certified gas-tightness
- 100% oxygen-tight stainless steel corrugated pipes
- Self-cleaning effect thanks to corrugation
- Cross-disciplinary assembly (shell, electrical, HVAC) creates flexibility in the construction process

TECHNICAL DETAILS

- Gas and water-tight
- Certified under FHRK test regulation GE 101 – FHRK 40 D05
- Radon-proof according to FHRK leaflet MB 101

THE BUILDING PENETRATION SYSTEM CONSISTS OF:

- Flexible jacket pipe DN200
- Stainless steel corrugated pipes DN32 or DN40 including insulation
- Cable protection pipes DN25 and DN32
- Terminators DN200
- Connection sets for DN32 or DN40
- Curaflex Nova® Uno/breit DN250
- Ring closure DN250
- Bend groove
- Building connection section warning strap



DOYMAfix® Connect HP/B

Connection lines	Pipe/cable diameters
Stainless steel corrugated pipes	OD 41 mm, ID 33 mm (DN32) or OD 48 mm, ID 40 mm (DN40)
Cable protection pipe	OD 25 mm, ID 19 mm (DN25) and OD 32 mm, ID 25 mm (DN32)
Cables	1 × 9.5–11 mm/1 × 10–14 mm/1 × 11–17 mm
Adapter nipples	G1 1/2" – G1 1/4" AG/G1 1/2" – G1 1/2" AG (DN32) G2" – G1 1/2" AG/G2" – G2" AG (DN40)

Dimensions	
Core bore Ø	249–253 mm
Centre-to-centre distance of stainless steel corrugated pipes	69 mm

Product	DN	Length	Article number
DOYMAfix® Connect HP/B	32	3 m	5 23 0 032 200 0 3
	32	5 m	5 23 0 032 200 0 5
	40	10 m	5 23 0 040 200 1 0
	40	15 m	5 23 0 040 200 1 5
	40	20 m	5 23 0 040 200 2 0